

### SERIES 18:



ACTUAL SIZE



### ULTRA SUB-MINIATURE 7 AMP DOUBLE-BREAK SNAP ACTION SWITCHES

Series 18 switches feature the Butterfly® double-break momentary switch mechanism. This very small package can carry a full 7 amp load (or low current load).

#### KEY FEATURES:

- Gold contacts
- Solder terminals
- Meets MIL-S-8805
- UL recognized and CSA certified: 7 amps @ 125/250 VAC
- Lever and roller actuator are available

#### APPLICATIONS

- Industrial valve controls
- Aircraft rotary actuator
- Aircraft linear actuator
- Float control pumps
- Spool valves
- Medical equipment
- Aircraft fuel valves
- Pressure switches

### ORDERING INFORMATION:

#### Switches

Part Number	Contacts	Terminals	RoHS Compliant
<b>18-40421</b>	Gold Plated	End Solder	✓
<b>18-488051</b> (MS27257-1)	Gold Plated	End Solder	—

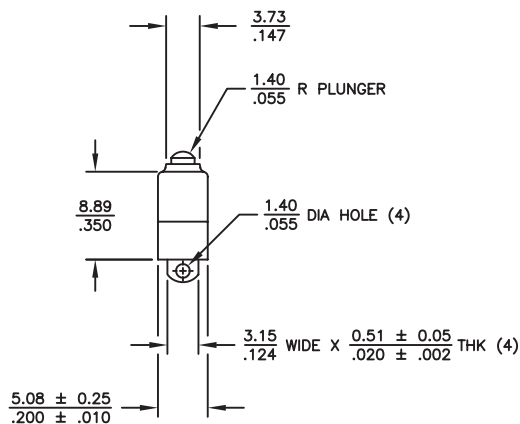
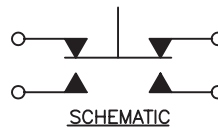
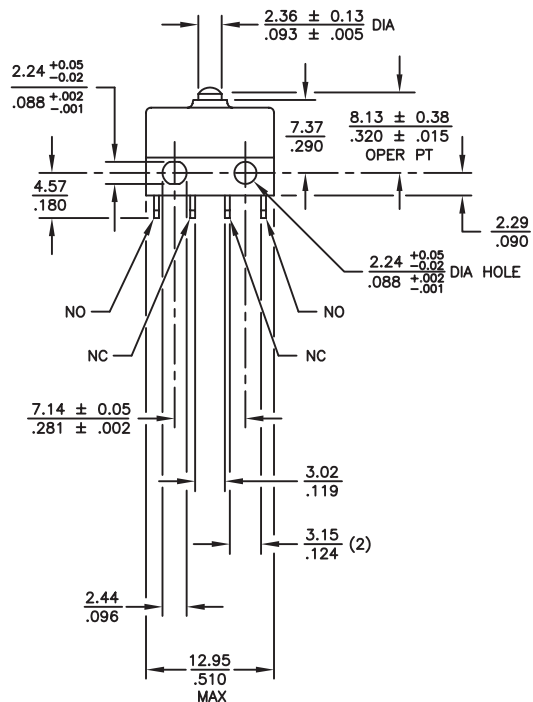
#### actuator (see page 68 for additional specifications)

Part Number	Oper. Force	Release Force	Pretravel	Overtravel	Movement Diff.	Operating Point
<b>78-3000</b> Spring Lever	6 ± 2 oz	2 oz min	.125 max	.030 min	.030 ± .015	.325 ± .030
<b>78-3100</b> Roller Lever	6 ± 2 oz	2 oz min	.125 max	.030 min	.035 ± .015	.560±.030

### STANDARDS / AGENCY / RATINGS:



## BASIC SWITCH



## MECHANICAL / ELECTRICAL CHARACTERISTICS:

**Pretravel:**  
0.030 inches max

**Overtravel:**  
0.006 inches min

**Operating Force:**  
5 oz + 3 oz - 2 oz

**Release Force:**  
1.5 oz min

**Movement Differential:**  
0.015 inches ± 0.005

**Operating Point:**  
0.320 inches ± 0.015  
(from mounting hole centers)

**Circuit:**  
SPDT-DB (Form Z)

**Electrical Rating @ 28VDC:**

Circuitry	Current
2 Circuit (SPDT-DB)	5 amp Res 3 amp Ind*
1 Circuit (SPST)	8 amp Res 7 amp Ind*
*L/R = .026	

# Mouser Electronics

Authorized Distributor

Click to View Pricing, Inventory, Delivery & Lifecycle Information:

[ITW Switches:](#)

[18-40421](#) [18-488051](#)