

# AM070RVH02

## 7 Inch High Performance Capacitive Smart Display

January 2020  
Revision A



Product Specification

## Introduction

The AM070RVH02 is the enhanced version of Amulet's 7" high performance smart module. The mechanical dimensions and performance remain identical to the previous MK-070C-HP, with I/O connectors in the exact same location. The enhancement comes in the form of better EMI mitigation with re-designed hardware and optimized firmware. The AM070RVH02 comes with 802.11 b/g/n WiFi with easy programmability using Amulet's custom utilities. The smart module is based around a 32-bit ARM Cortex A5 processor architecture running up to 500MHz. The memory and storage capacity of the AM070RVH02 includes 256MB of DDR2-400, 4GB eMMC Flash module, and SD card socket with support up to 64GB.

The High Performance Graphics Display Card integrates the Amulet Graphical OS (GEMOS) with the high performance, cost-sensitive, processor architecture of the ARM Cortex series. With an integrated LCD controller and graphics accelerator utilizing the dedicated floating point unit (FPU), the Graphics Display Card is the perfect solution for any integrated, embedded, HMI solution.

## Features

### Module

- Amulet Graphical GEM OS
- 500Mhz ARM A5 Processor
- 256MB of DDR2-400 DRAM
- 4GB eMMC Flash and microSD Card Socket
- 24V AC and 12V DC
- Operating Temperature: -20°C to 85°C

### Display

- 7" WVGA (16:9 diagonal)
- 350 nit (cd/m2)

- Contrast Ratio: 400:1
- 6 o'clock Viewing Angle: Top-60° Bottom-70°; 70° Left-Right

## Touch Panel

- Projected Capacitive Touch
- Operates with gloved hands and rejects liquids
- Gestures: Tap, Flick, Scroll, Pan, Pinch-and-Zoom
- 2 finger Multi-touch

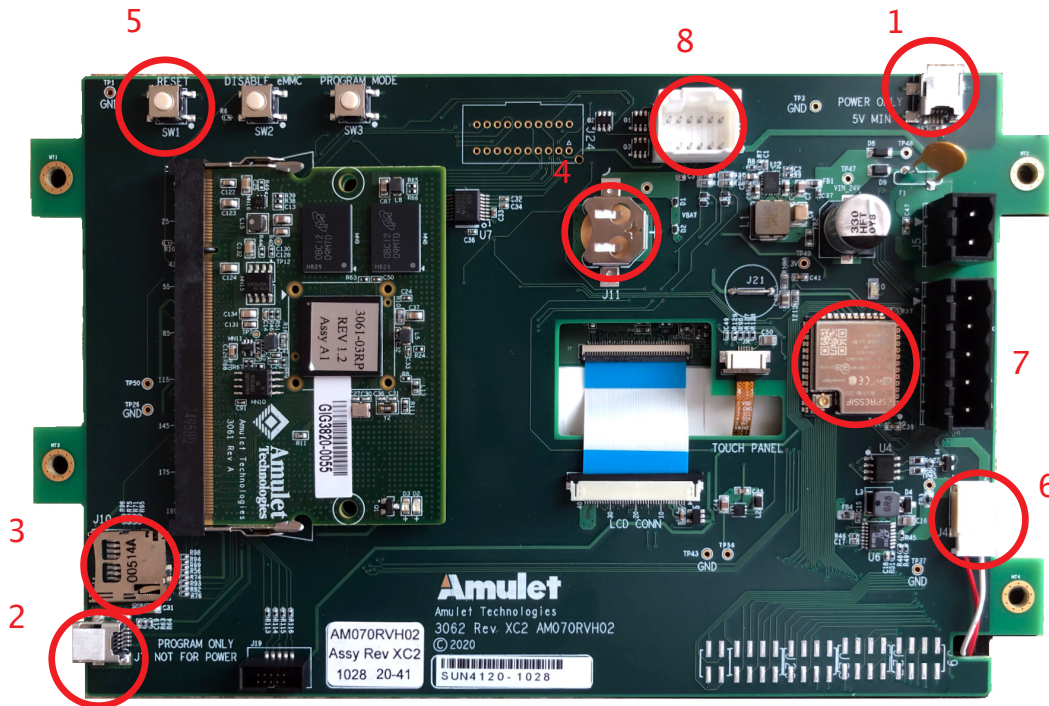
## Interfaces

- RS-485
- RS-232
- 802.11 b/g/n
- 1x I2C
- 2x ADC
- 3x PWM
- USB 2.0 Device Interface

## Power

- Multiple options for input power
  - 12V DC
  - 24V AC
  - 5V USB power
- Supports both AC and DC
- Running Mode: ~800mA @ 9V
- RTC with battery backup

## Board Component Descriptions



1. Mini-USB input power supply: This port designated J18 on the PCB is just one of many methods to power the display module. The power supply must be  $5V \pm 5\%$ , supplying at least 1A.

2. Mini-USB device programming port: When connected to the PC, the device will be recognized as a USB Mass Storage Device. Within GEMstudio Pro, Amulet's integrated design environment, the compiled projects will get stored in the onboard eMMC.

3.  $\mu$ SD card slot: The external SD card has two functions. Display projects can be updated using the SD card. During boot, the project on the SD card can be read and written onto the eMMC directly. The SD Card can be used for data storage accessed through read/written to from GEMscript.

Note: the  $\mu$ SD card is not supplied with the module.

4. Battery Backup: the function of the battery backup is to keep the RTC (Real-Time Clock) operating even with the loss of module power. The battery used is the CR1225 3V watch battery. Note: the battery is not supplied with the module.

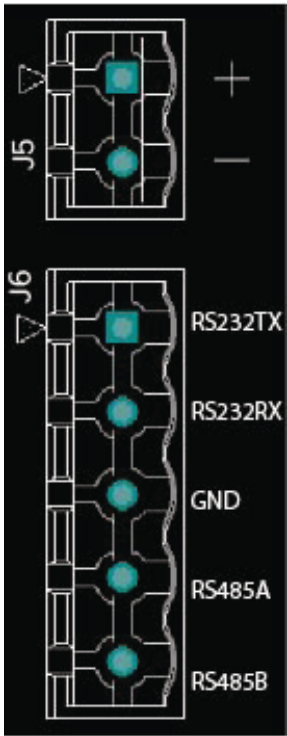
5. Reset switch.

6. Power cable for the LCD backlight.

7. ESP32 WiFi module

8. Peripheral I/O connector

Main Power and Communication



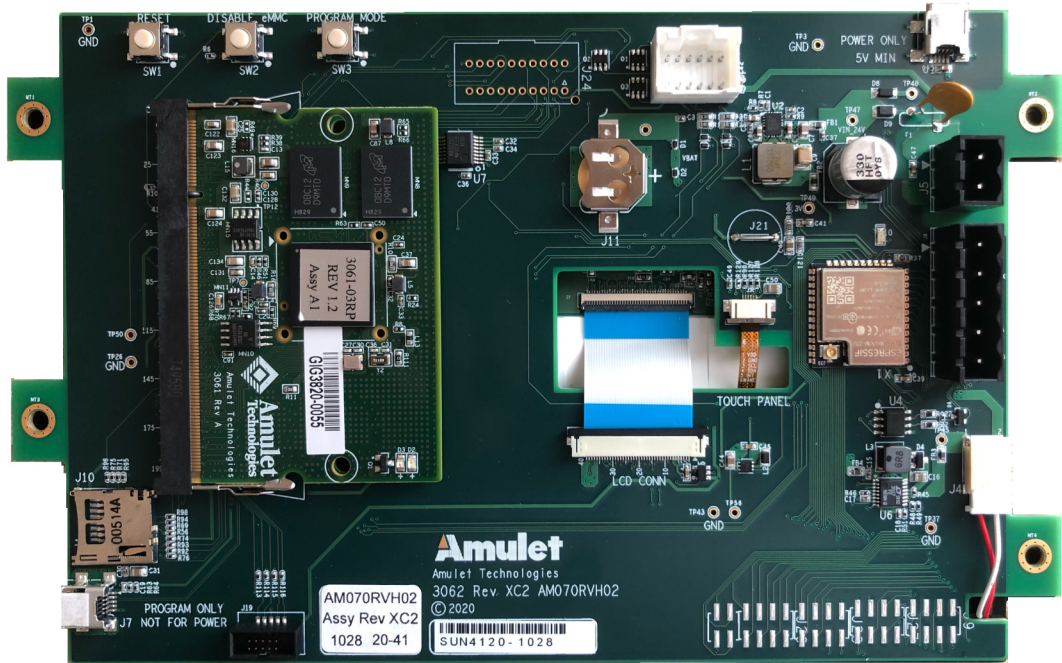
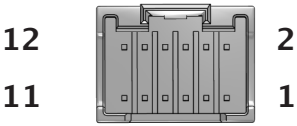
Power Input Header- J5		
Pin Number	Function	Details
1	AC/DC Power Input	24VAC or 12VDC
2	GND	Common Ground

Note: Header J5 is reverse polarity protected

Communications Header - J6		
Pin Number	Function	Details
1	RS232TX	RS232 Transmit
2	RS232RX	RS232 Receive
3	GND	Common Ground
4	RS485A	Inverting Differential Line
5	RS485B	Inverting Differential Line

The headers J5 and J6 used on the board are manufactured by Molex. The part number for J5 is 39531-1002 and the J6 part number is 39531-1005. This type of connector mates with the Molex 39530 family of connectors.

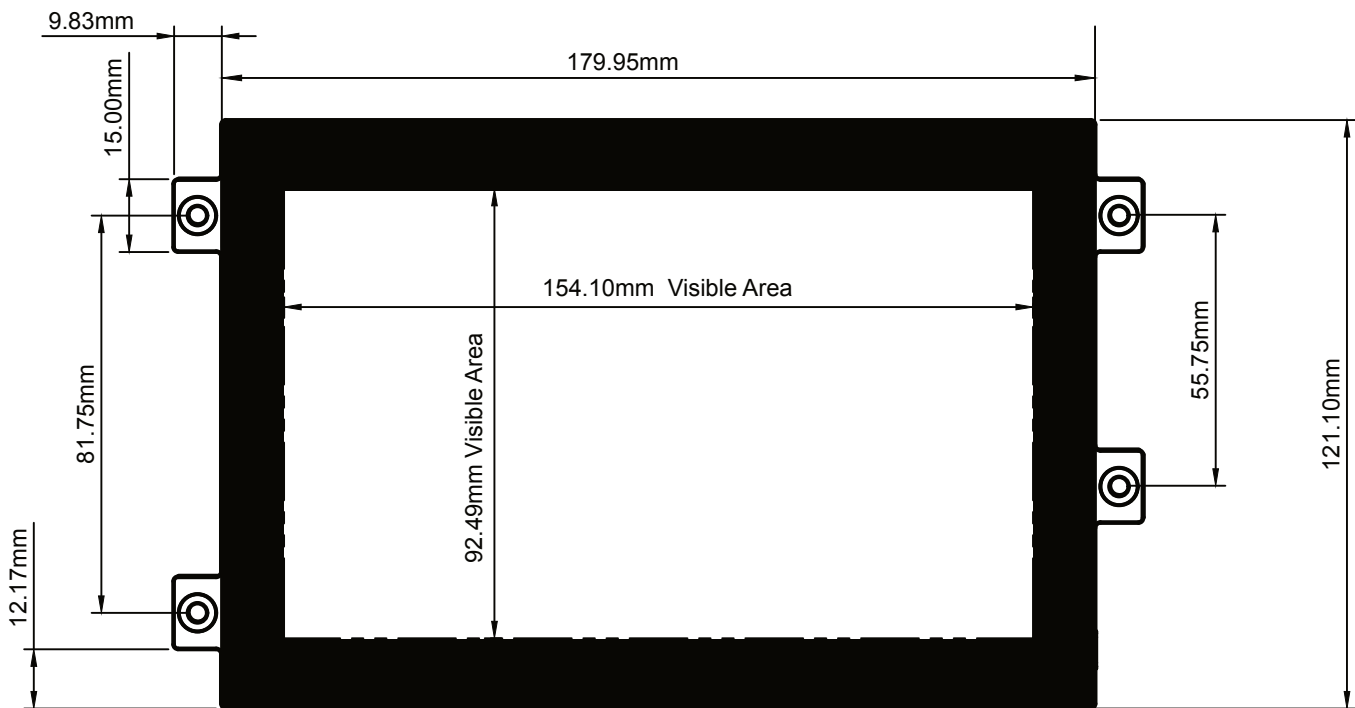
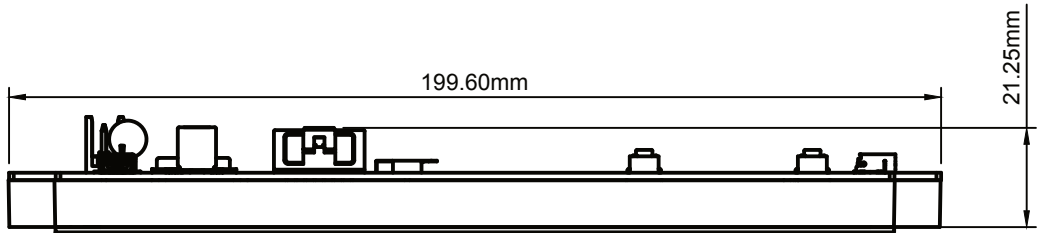
Peripheral I/O Connector



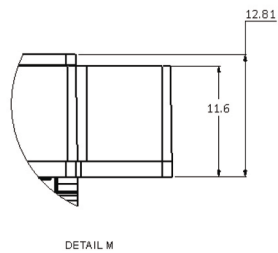
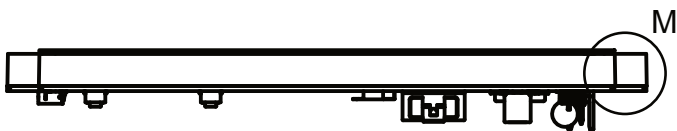
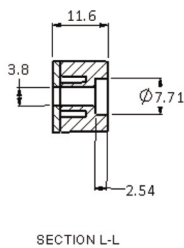
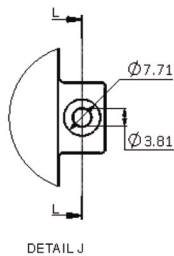
Pin#	Type	Function	Details
1	P	24V AC	24V AC Input
2	P	GND	Ground
3	I/O	SCL	I <sup>2</sup> C Clock
4	I/O	SDA	I <sup>2</sup> C Data
5	I/O	RS485A TXD	RS485 Transmit
6	I/O	RS485B RXD	RS485 Receive
7	I	ADC0	Analog Input 0
8	I	ADC1	Analog Input 1
9	P	5V DC	5V Output
10	O	PWM0	PWM Output 0
11	O	PWM3	PWM Output 3
12	O	PWM1	PWM Output 1

The header J24 used on the board is manufactured by Molex. The part number is 055917-2010. This type of connector mates with the Molex 51353 family of connectors.

Mechanical Specification



Mounting Specification



Recommended Operating Conditions

Parameter	Conditions	Min	Typ	Max	Units
DC Supply Voltage	Stable external supply required	7.4	12	24.6	Vdc
AC Supply Voltage	Stable external supply required	20.4	24	27.6	Vdc
USB Port Supply Voltage	Stable external supply required	4.75	5	5.25	Vdc

Environmental Specification

Parameter	Min	Typ	Max	Units
Storage Temp	-30		80	°C
Operation Temp	-20		70	°C

## Revision History

<i>Date</i>	<i>Revision</i>	<i>Notes</i>
January 29, 2021	A	Initial release



## Contact Us:

## You have Embedded GUI Questions. We have Answers.

Amulet Technologies Headquarters

1475 S. Bascom Ave., Suite 111

Campbell, CA 95008

USA

Phone: (408) 374-4956

Email: [info@amulettechnologies.com](mailto:info@amulettechnologies.com)

Sales and Customer Support:

Phone: (888) 374-8688

Sales Email: [sales@amulettechnologies.com](mailto:sales@amulettechnologies.com)

Support Email: [support@amulettechnologies.com](mailto:support@amulettechnologies.com)

Follow us on Facebook and LinkedIn for updates!

@AmuletTechnologies

Disclaimer: The information in this document is provided in connection with Amulet Technologies, LLC (Amulet) products. No license, express or implied, to any intellectual property right is granted by this document or in connection with the sale of Amulet products. EXCEPT AS SET FORTH IN AMULET'S TERMS AND CONDITIONS OF SALE WHERE AMULET IS THE SELLER, AMULET ASSUMES NO LIABILITY WHATSOEVER AND DISCLAIMS ANY EXPRESS, IMPLIED OR STATUTORY WARRANTY RELATING TO ITS PRODUCTS INCLUDING, BUT NOT LIMITED TO, THE IMPLIED WARRANTY OF MERCHANTABILITY, FITNESS FOR A PARTICULAR PURPOSE, OR NON-INFRINGEMENT. IN NO EVENT SHALL AMULET BE LIABLE FOR ANY DIRECT, INDIRECT, CONSEQUENTIAL, PUNITIVE, SPECIAL OR INCIDENTAL DAMAGES (INCLUDING, WITHOUT LIMITATION, DAMAGES FOR LOSS AND PROFITS, BUSINESS INTERRUPTION, OR LOSS OF INFORMATION) ARISING OUT OF THE USE OR INABILITY TO USE THIS DOCUMENT, EVEN IF AMULET HAS BEEN ADVISED OF THE POSSIBILITY OF SUCH DAMAGES. Amulet makes no representations or warranties with respect to the accuracy or completeness of the contents of this document and reserves the right to make changes to specifications and product descriptions at any time without notice. Amulet does not make any commitment to update the information contained herein. Unless specifically provided otherwise, Amulet products are not approved for use in automotive applications, medical applications (including, but not limited to, life support systems and other medical equipment), avionics, nuclear applications, or other high-risk applications (e.g., applications that, if they fail, can be reasonably expected to result in significant personal injury or death).

# Mouser Electronics

Authorized Distributor

Click to View Pricing, Inventory, Delivery & Lifecycle Information:

[Amulet Technologies:](#)

[AM070RVH02](#)