

inspired LED

Infinity Series Outdoor LED Flex

Bring all the comforts of home to the great outdoors with the **Infinity Series Weather Resistant Dura-Flex System**. Compatible with both AC/DC power sources, this unique 12 volt system makes it possible to run up to seventy-five feet of continuous light without voltage drop. A lightweight weatherproof silicone seal makes it the perfect lighting solution indoors and out, ideal for patios, stairs, walkways, gazebos, and more!



Normal Bright: SKU# 3562

30 LEDs per meter (9 LEDs per foot)
LED Spacing: 1.31" Reel Length: 50M
Cut Points: Every 4"
Color Temp: Warm (~2700K)
Lumen Output: 65 lm per ft.



Super Bright: SKU# 3572 (Warm) 3573 (Pure)

60 LEDs per meter (18 LEDs per foot)
LED Spacing: 0.66" Reel Length: 50M
Cut Points: Every 1.97"
Color Temp: Warm (~2700K), Pure (~4000K)
Lumen Output: 125 lm per ft.



Power Requirements 12V DC Class 2 Power	Current/ft	Power/ft	1.0A Limit	3.8A Limit	5.0A Limit
Normal Bright	0.06 A/ft	0.726 W/ft	15 ft	57 ft	75 ft
Super Bright	0.12 A/ft	1.452 W/ft	8 ft	29 ft	38 ft

Infinity Accessories:



Pronged Screw Terminal

SKU#: 3571
Poke connector posts into flexible LED strip and terminate 12V DC 18-22AWG cable into screw terminals.



Quad Screw Terminal

SKU#: 3697
Combines with single barb connector to allow screw terminal connection from posts to 12V DC 18-22AWG cable.



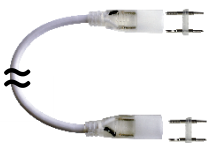
Double Barb Flex Extender

SKU#: 3508
Extend the LED flex strip length by terminating 2 flexible LED strips together using double barb flex extender.



AC-DC Diode Bridge

SKU#: 3512
Use when terminating to AC power source. Bridge can be located anywhere between transformer and LED strip.



Jumper Cable Connector (12 ft)

SKU#: 3695
Combines with 2 single barb connectors, rubber caps slip over end of LED flex, connecting one strip to the next, or cut off end to wire nut own cable.



Jumper Cable Connector (10 in)

SKU#: 3696
Combines with 2 single barb connectors, rubber caps slip over ends of LED flex, connecting one strip to the next, or cut off end to wire nut own cable.



Clear Mounting Channel (6 ft)

SKU#: 3698
Hold LED strips securely in place without need for adhesive, can be screwed directly onto flat surface or mounted using large metal clips.



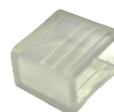
Metal Outdoor Mounting Clips

SKU#: 3567 (small) 3687 (large)
Use small size to mount LED strip directly, or large size to mount clear channel. Sold in packs of 10 with 1 screw per clip.



Clear Outdoor Mounting Clips

SKU#: CLEAR
Use to mount Infinity flexible LED strips. Sold in packs of 10 with 2 screws per clip.



End Cap

SKU#: 3509
Enclose open end of LED strip, combine with silicone to create weatherproof seal.

Warning:  **DO NOT CONNECT DIRECTLY TO HIGH VOLTAGE.** Turn off main breaker and read all instructions prior to installation. Products to be installed in accordance with NEC regulations by a licensed electrician.

Instructions: To install, you will need Infinity Dura-flex, heavy duty scissors or PVC cutters, wire strippers, painters or masking tape, small screw driver, 2-conductor outdoor rated cable, compatible Infinity accessories

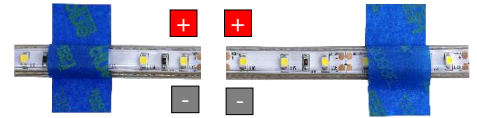
1. Measure Infinity Series Dura-flex to desired length, ensuring that each piece has at least 1 solder joint connection on the underside to supply power



2. Use heavy duty scissors or PVC cutters to cut Infinity Dura-flex to length along copper solder pads ONLY



3. Line desired area with flex, mounting in place temporarily using masking or painter's tape, ensuring that polarities of each strip are aligned



4. Connect LEDs in series by terminating ends of flex with preferred compatible Infinity Series connectors- quad screw terminal or two prong screw terminal with bulk outdoor rated cable, or Infinity jumper cables (see individual product instructions for more details). Ensure that polarities match from strip to strip.



5. If utilizing AC power source, connect to Infinity Diode Bridge, then follow product instructions to connect to compatible low voltage switch or controller (if desired), and continue running 2-conductor cable to first strip in series



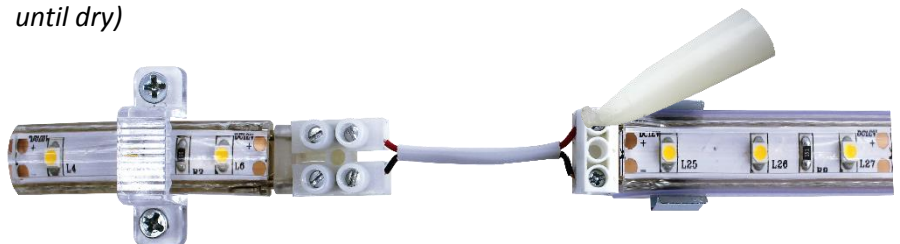
6. If utilizing DC power source, make direct connection to compatible low voltage switch or controller (if desired), then continue running 2-conductor cable to first strip in series



7. Once satisfied with placement of LEDs, test all connections and add end caps to bare ends of flex, sealing with silicone as needed



8. Mount in place using mounting clips, clear channel, or outdoor rated silicone (if using silicone, use clamps or vice grips to hold in place until dry)



Mouser Electronics

Authorized Distributor

Click to View Pricing, Inventory, Delivery & Lifecycle Information:

[Inspired LED:](#)

[3562](#) [3573](#) [3572](#)