

OPTIREG™ linear voltage regulator TLS830A4EPV50 demoboard

Z8F80471187

[Simulation](#)[Family
overview](#)[Support](#)

About this document

Scope and purpose

This document describes the usage of the OPTIREG™ linear voltage regulator TLS830A4EPV50 demoboard for the TLS830A4EPV50 from Infineon Technologies AG. Please also refer to the corresponding datasheet for further information on the product.

Intended audience

This document is intended for engineers who develop applications.

Table of contents

About this document.....	1
Table of contents.....	2
1 Introduction	3
1.1 General description	3
1.2 TLS830A4EPV50 features	3
1.3 Block diagram.....	4
2 Demoboard	5
2.1 Assembly.....	5
2.2 Operating conditions	5
2.3 Configuration.....	5
2.3.1 Quick start procedure	6
2.3.2 Optional additional components	6
3 Schematic and layout	7
3.1 Schematic.....	7
3.2 Layout	8
4 Bill of materials.....	9
5 Restrictions	10
Revision history.....	11

1 Introduction

The OPTIREG™ linear voltage regulator TLS830A4EPV50 demoboard allows for easy lab evaluation of the TLS830A4EPV50. The demoboard is populated with the TLS830A4EPV50 in a PG-TSDSO-14 package, as well as the standard external components and test points to allow for easy device evaluation.

1.1 General description

The OPTIREG™ linear TLS830A4EPV50 is an Infineon high performance regulator with low dropout voltage and ultra low quiescent current. With only 4.3 μA typical quiescent current at light load and an input voltage range of 3.2 V to 40 V the device is perfectly suitable for automotive supply systems or other supply systems that are permanently connected to the battery.

The loop concept combines fast regulation and very high stability while requiring only one small ceramic capacitor of 4.7 μF at the output. The operating range starts at an input voltage of 3.2 V (extended operating range). This makes the device suitable for automotive systems that need to operate in cranking condition.

Internal protection features, such as output current limitation and overtemperature shutdown, are designed to protect the device from immediate damage caused by failures such as

- output shorted to GND
- overcurrent condition
- overtemperature condition

1.2 TLS830A4EPV50 features

- Ultra low quiescent current, typically 4.3 μA at light loads
- Wide input voltage range from 3.2 V to 40 V
- Output voltage 5 V
- Output voltage accuracy $\pm 2\%$
- Output current capability up to 300 mA
- Low dropout voltage, typically 190 mV, at output current below 100 mA
- Stable with ceramic output capacitor of 4.7 μF
- Overtemperature shutdown
- Output current limitation
- Wide temperature range
- Green Product (RoHS compliant)

1.3 Block diagram

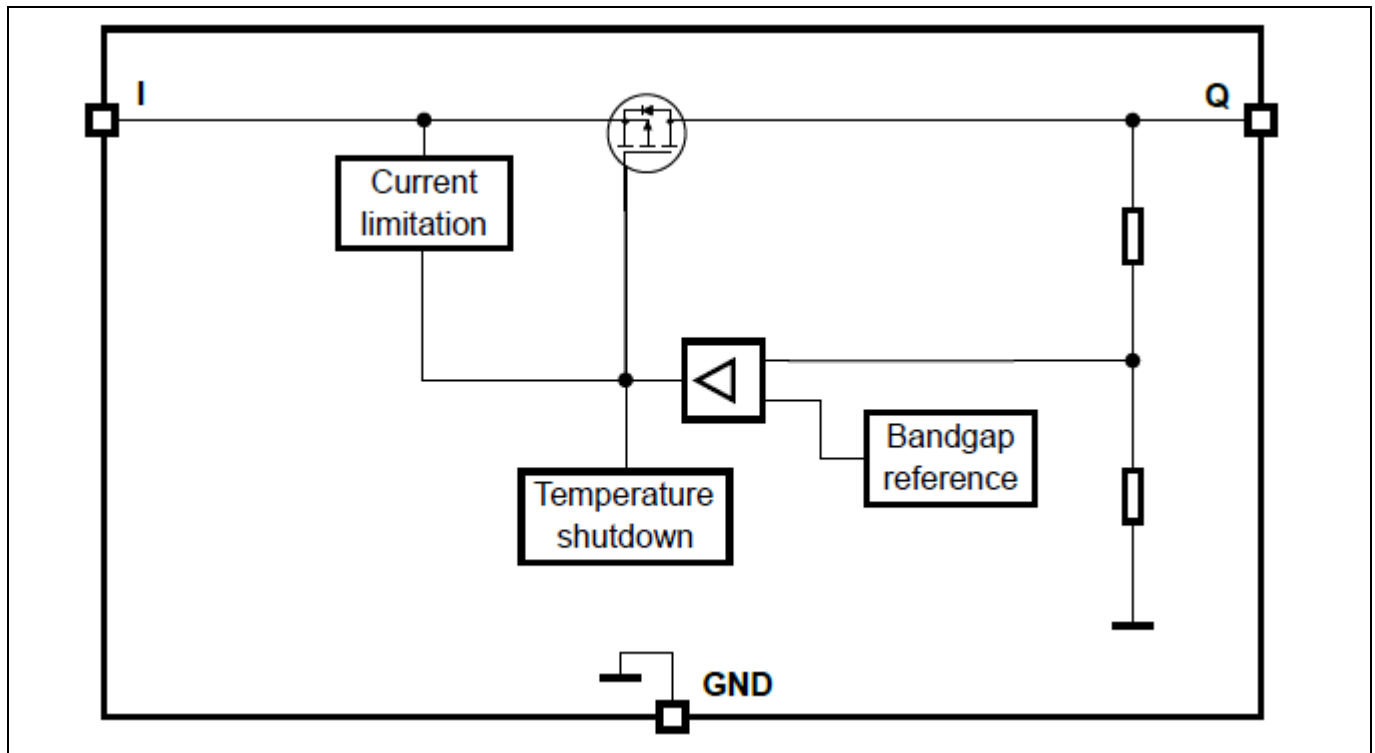


Figure 1 Block diagram of TLS830A4EPV50

2 Demoboard

2.1 Assembly

The TLS830A4EPV50 demoboard is equipped with the TLS830A4EPV50 in PG-TSDSO-14 and all the necessary components. Placeholders for an optional filtering capacitor on the output and an optional overvoltage suppressor diode on the input are available.

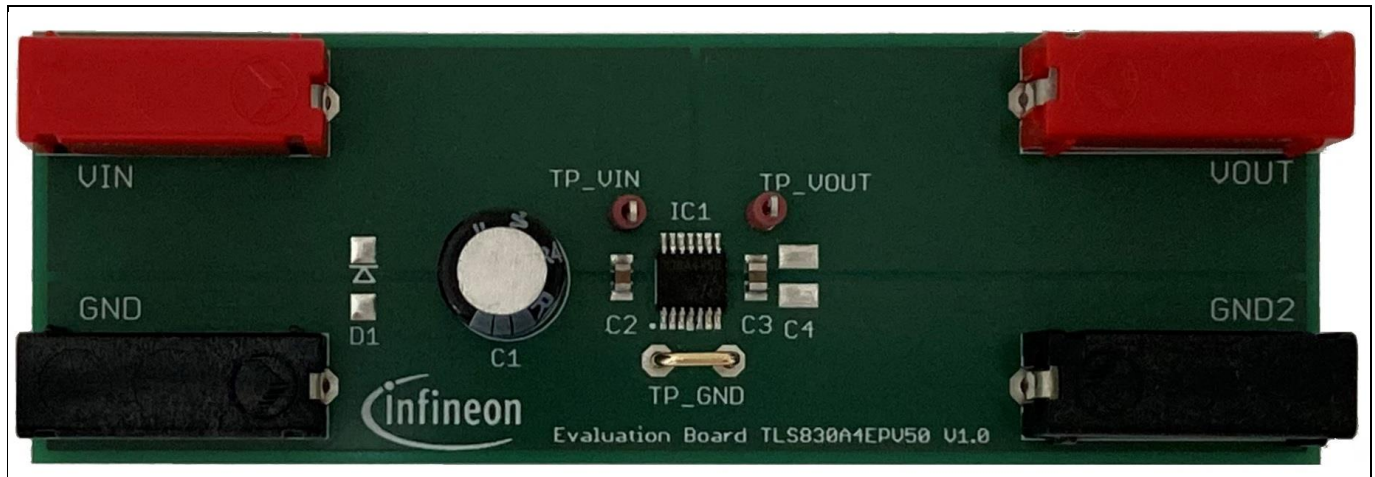


Figure 2 TLS830A4EPV50 demoboard

2.2 Operating conditions

To avoid electrical damage of the demoboard, the values in Table 1 must be maintained.

Table 1 Limit values for operation¹

Parameter	Symbol	Values		Unit	Note or condition
		min	max		
Board supply voltage ²	V_I	0	45	V	Power supply
Regulator output	V_O	0	7	V	Regulated output voltage
Ground	GND	0	0	V	System GND

2.3 Configuration

The TLS830A4EPV50 demoboard is easy to use and provides a fixed output voltage of 5.0 V. No extra configuration is required.

¹ The demoboard operates at an ambient temperature of 25°C

² Functional input voltage range: 3.2 V to 40 V

2.3.1 Quick start procedure

1. With the power off, connect the input power supply to I and GND.
2. Connect the load between Q and GND.
3. Turn on the power supply. Ensure that the input voltage does not exceed 45 V. Schematic and layout

2.3.2 Optional additional components

The demoboard contains additional solder pads which are not populated by default, but can be populated by the user, if so required.

- C4: optional filtering capacitor can be used to improve the transient response.
- D1: optional overvoltage suppressor diode for protection against overvoltage at the input. The breakdown of the suppressor diode needs to be chosen to ensure the input voltage to the TLS830A4EPV50 does not exceed the maximum ratings.

3 Schematic and layout

3.1 Schematic

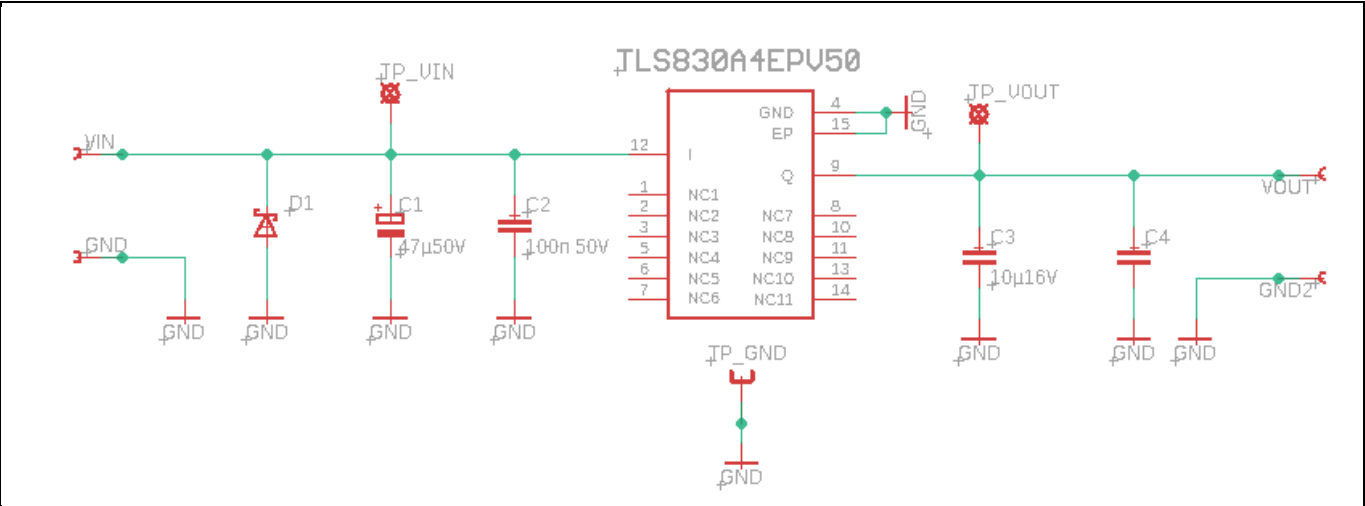


Figure 3 TLS830A4EPV50 demoboard schematic

3.2 Layout

T

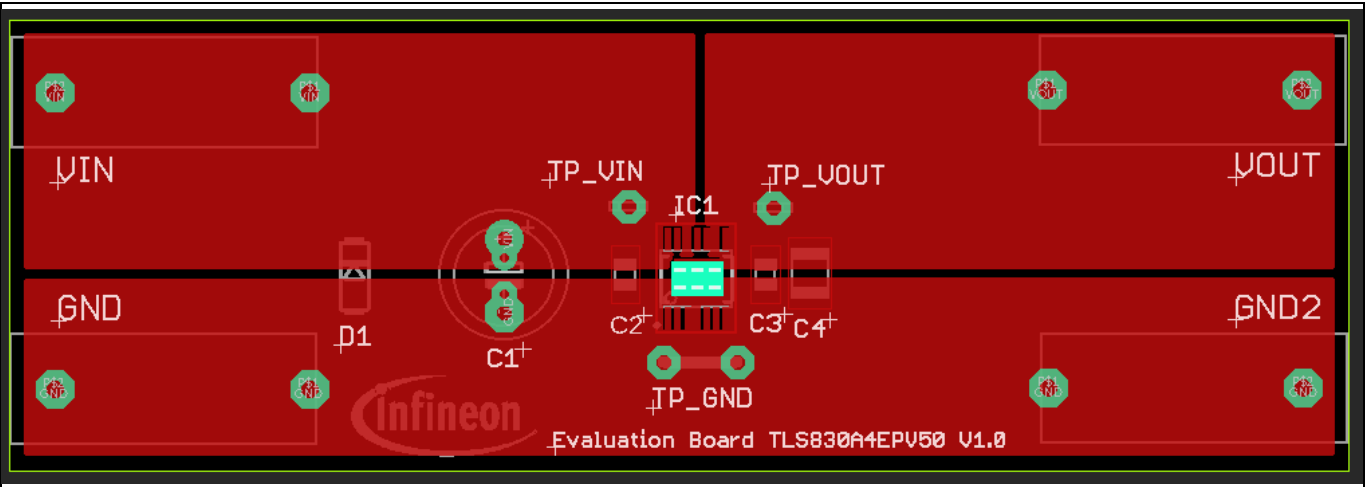


Figure 4 TLS830A4EPV50 demoboard top layer

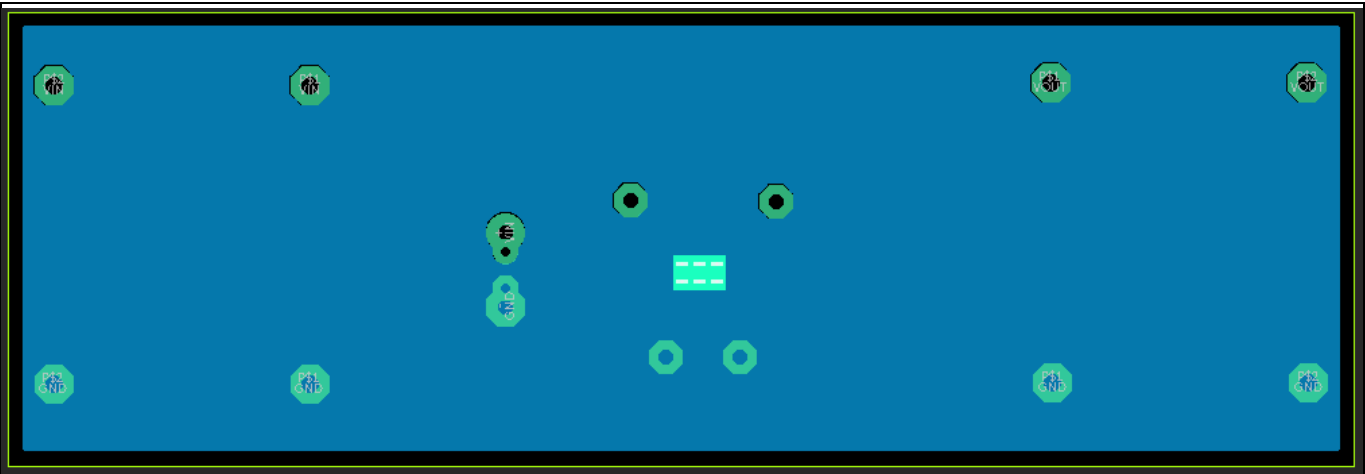


Figure 5 TLS830A4EPV50 demoboard bottom layer

4 Bill of materials

The bill of materials shows the components for both product specific assembly variants of the demoboard. For the mounting condition of each component see Schematic.

Table 2 Bill of material

Part	Value	Package
IC1	TLS830A4EPV50	PG-TSDSO-14
VIN, VOUT	Banana jack (red)	BABU4MM
GND, GND	Banana jack (black)	BABU4MM
TP_VIN, TP_VOUT	Test point	–
TP_GND	Test point	–
C1	10 μ F / 50 V	E5-8,5
C2	100 nF / 50 V	C0805
C3	10 μ F / 16 V	C0805
C4	Optional	C1210
D1	Optional	DO-214AC

5 Restrictions

This demoboard offers limited features only for evaluation and testing of Infineon products. The demoboard is not an end product or finished appliance, nor is it intended or authorized by Infineon to be integrated into end products. The demoboard may not be used in any production system. For further information please visit www.infineon.com.

Revision history

Document version	Date of release	Description of changes
1.00	12.07.2023	Initial release

Trademarks

All referenced product or service names and trademarks are the property of their respective owners.

Edition 2023-06-25

Published by

Infineon Technologies AG

81726 Munich, Germany

© 2023 Infineon Technologies AG.

All Rights Reserved.

Do you have a question about this document?

Email: erratum@infineon.com

Document reference

Z8F80471187

IMPORTANT NOTICE

The information contained in this application note is given as a hint for the implementation of the product only and shall in no event be regarded as a description or warranty of a certain functionality, condition or quality of the product. Before implementation of the product, the recipient of this application note must verify any function and other technical information given herein in the real application. Infineon Technologies hereby disclaims any and all warranties and liabilities of any kind (including without limitation warranties of non-infringement of intellectual property rights of any third party) with respect to any and all information given in this application note.

The data contained in this document is exclusively intended for technically trained staff. It is the responsibility of customer's technical departments to evaluate the suitability of the product for the intended application and the completeness of the product information given in this document with respect to such application.

For further information on the product, technology, delivery terms and conditions and prices please contact your nearest Infineon Technologies office (www.infineon.com).

WARNINGS

Due to technical requirements products may contain dangerous substances. For information on the types in question please contact your nearest Infineon Technologies office.

Except as otherwise explicitly approved by Infineon Technologies in a written document signed by authorized representatives of Infineon Technologies, Infineon Technologies' products may not be used in any applications where a failure of the product or any consequences of the use thereof can reasonably be expected to result in personal injury.

Mouser Electronics

Authorized Distributor

Click to View Pricing, Inventory, Delivery & Lifecycle Information:

[Infineon:](#)

[TLS830A4EPV50BOARDTOBO1](#)