

# Quick Setup Guide for Sensor Hub - Nano

with Infineon Barometric Pressure Sensor (V2.0)

EVAL SHNBV01 DPS310

EVAL SHNBV01 DPS368



# Recommended software and hardware requirements



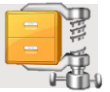
1 Machine with Windows OS (with security patch updates)



2 Sensor Evaluation Software GUI (via "Infineon Toolbox")



3 Zip/Unzip Software



4 Connectivity



5 Micro USB Cable to charge the Nano-Hub



6 30MB of Free Space on HDD

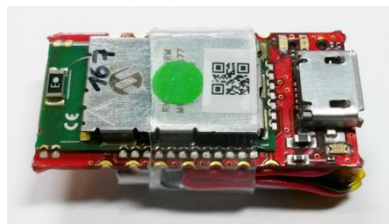
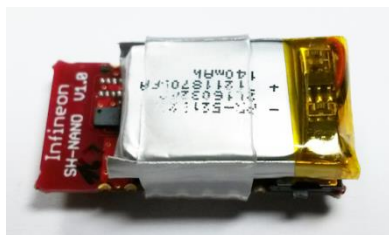


# Quick Setup for Digital Pressure Sensor Demo

## STEP1

### Box Content

Programmed Sensor Hub  
Nano with DPS310, DPS368



[www.infineon.com/pressure\\_sensor](http://www.infineon.com/pressure_sensor)

## STEP2

### Install Infineon Toolbox

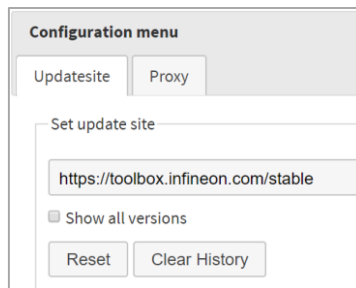
Detailed instruction and  
download option:

[www.infineon.com/toolbox](http://www.infineon.com/toolbox)

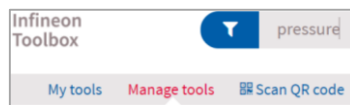
Set update site:

For Infineon internal:  
"http://toolbox.intra.infineon.com/updatesite/stable"

For external customers:  
"https://toolbox.infineon.com/stable"



### Go to "manage tools" and download "Pressure Sensor Kit"



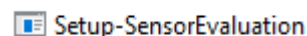
## STEP3

### Download GUI software

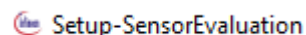
"SES2G Sensor Software  
Analyzer" (or use pre-installed  
software on Infineon Toolbox  
platform)

### Unzip and Install

Double Click on



this self-extracts the software  
into a new folder, explore the  
new folder and double click on



This will install the application  
in Windows.

## STEP4

### Before Launching the GUI you must pair over Bluetooth

Launch Bluetooth Device Manager  
in Windows

If IFX\_NANOHUB is already paired  
please remove it by clicking on  
Remove device button

Otherwise make a new pairing of  
IFX\_NANOHUB by clicking on



Add Bluetooth or other device

Click on "Add a device"

- Bluetooth (mice, keyboard, pens, or other kind of Bluetooth devices)
- A list of found device(s) will be refreshed
- Select IFX\_NANOHUB and connection will be established,

**Restart your computer** before  
using the SES2G Sensor Software  
Analyzer to ensure full  
functionality

Receive board

Download "Infineon  
Toolbox"

Download software  
and install

Pair your device via  
Bluetooth

# Quick Setup for Digital Pressure Sensor Demo

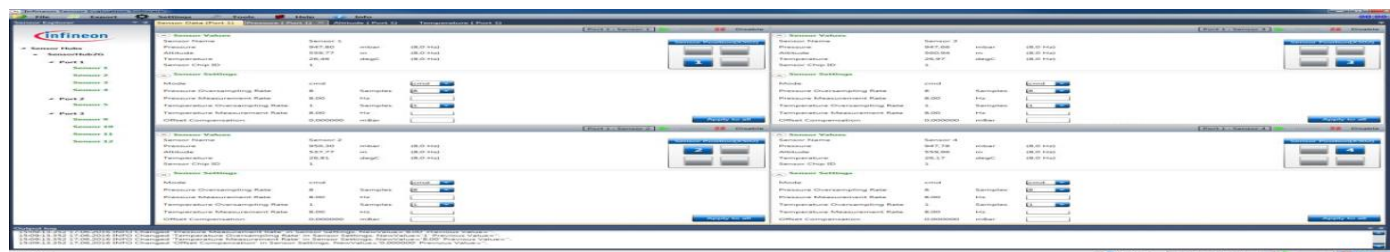
## STEP 5

### Launching the GUI

- Click and Run Sensor Evaluation Software 1.x.x (Windows → Infineon Technologies AG → Sensor Evaluation Software 1.x.x)
- Click on the Bluetooth icon on the bottom right (as indicated by the red arrow)



- Wait few seconds and device is found
  - You are now ready to receive and to see sensor data
- Click on Connect button



## STEP 6

Enjoy the  
DEMO

Run the GUI

Installation  
Complete



Part of your life. Part of tomorrow.



# Mouser Electronics

Authorized Distributor

Click to View Pricing, Inventory, Delivery & Lifecycle Information:

[Infineon:](#)

[EVALSHNBV01TOBO1](#) [EVALSHNBV01DPS422TOBO1](#) [EVALSHNBV01DPS310TOBO1](#)