

Microelectronic Power IC

HEXFET® Power MOSFET Photovoltaic Relay
Single Pole, Normally Open, 0-400V, 240mA AC / 360mA DC

General Description

The PVT412A Series Photovoltaic Relay is a single-pole, normally open solid-state relay that can replace electromechanical relays in many applications. It utilizes International Rectifier's proprietary HEXFET power MOSFET as the output switch, driven by an integrated circuit photovoltaic generator of novel construction. The output switch is controlled by radiation from a GaAlAs light emitting diode (LED) which is optically isolated from the photovoltaic generator.

These SSRs are specifically designed for industrial control and peripheral telecom applications.

Series PVT412A Relays are packaged in a 6-lead molded DIP package with either thru-hole or surface mount ('gull-wing') terminals. It is available in standard plastic shipping tubes or on tape-and-reel. Please refer to part identification information

Applications

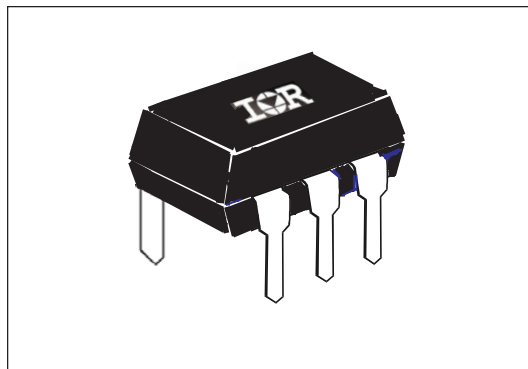
- Control of AC power line (up to 240 VAC) industrial loads
- Control of DC industrial loads up to +/-300 VDC
- On/Off hook switch
- Dial-pulse generation

Part Identification

PVT412APbF thru-hole
PVT412ASPbF surface-mount
PVT412AS-TPbF surface-mount, Tape and Reel

Features

- HEXFET Power MOSFET output
- Bounce-free operation
- 4,000 V_{RMS} I/O isolation
- Very low on-resistance (R_{DD-ON})
- Linear AC/DC operation
- Solid-State Reliability
- UL Recognized
- ESD Tolerance:
4000V Human Body Model
500V Machine Model



(HEXFET is the registered trademark for International Rectifier Power MOSFETs)

Electrical Specifications 0-400V, 240ma,AC (T_A= +25°C) unless otherwise specified)

INPUT CHARACTERISTICS	Limits	Units
Minimum Control Current (see figure 1)	3.0	mA
Maximum Control Current for Off-State Resistance	0.4	mA
Control Current Range (Caution: current limit input LED, see figure 5)	3.0 to 25	mA
Maximum Reverse Voltage	6.0	V

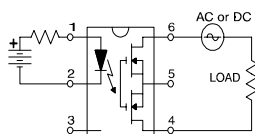
OUTPUT CHARACTERISTICS	Limits	Units
Operating Voltage Range	0 to ±400	V peak
Maximum Load Current @ T _A =+40°C 5mA Control (see figure 1)		
A Connection	240	mA
B Connection	260	mA
C Connection	360	mA
Maximum On-State Resistance @ T _A =+25°C		
100mA Pulsed Load, 5mA Control (see figures 2 & 3)		
A Connection	6	Ω
B Connection	3	Ω
C Connection	2	Ω
Max. pulsed Load Current @ T _A =+25°C, ±400V, 5mA Control (10mS @ 10% duty cycle)	750	mA
Maximum Off-State Leakage @ T _A =+25°C, ±400V	1.0	μA
Maximum Turn-On Time @ T _A =+25°C (see figures 6 & 7)		
For 50mA, 100 V _{DC} load, 5mA Control (5mS pulse width @ 50% duty cycle)	3.0	ms
Maximum Turn-Off Time @ T _A =+25°C (see figures 6 & 7)		
For 50mA, 100 V _{DC} load, 5mA Control (5mS pulse width @ 50% duty cycle)	0.5	ms
Maximum Output Capacitance @ 50V _{DC} , f=1MHz (C _{out} , see figure 8)	40.0	pF

GENERAL CHARACTERISTICS	Limits	Units
Minimum Dielectric Strength, Input-Output	4000	V _{RMS}
Minimum Insulation Resistance, Input-Output	10 ¹²	Ω
Maximum Capacitance, Input-Output V _d =0V, f=1MHz	1.0	pF
Maximum Pin Soldering Temperature (10 seconds maximum)	+260	
Ambient Temperature Range:		°C
Operating	-40 to +85	
Storage	-40 to +100	

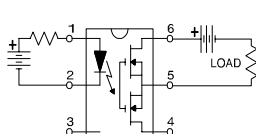
International Rectifier does not recommend the use of this product in aerospace, avionics, military or life support applications. Users of this International Rectifier product in such applications assume all risks of such use and indemnify International Rectifier against all damages resulting from such use.

Connection Diagrams

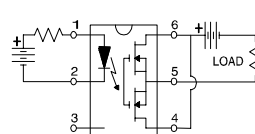
"A" Connection



"B" Connection



"C" Connection



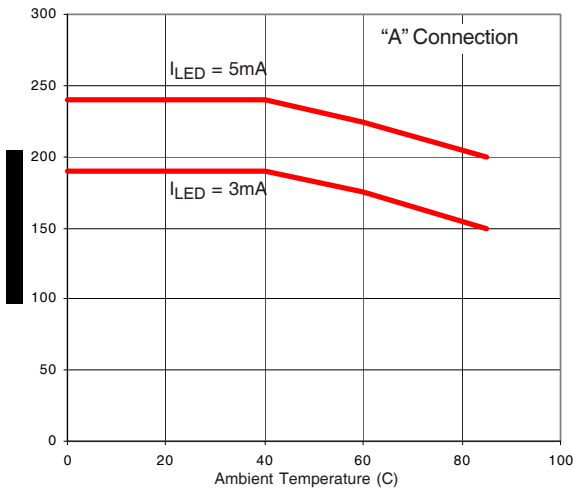


Figure 1. Current Derating Curves

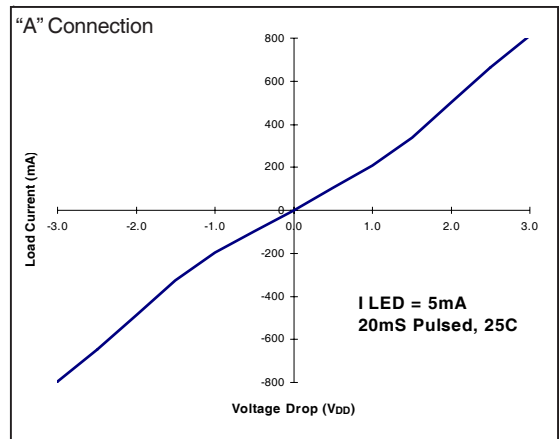


Figure 2. Typical On Characteristics

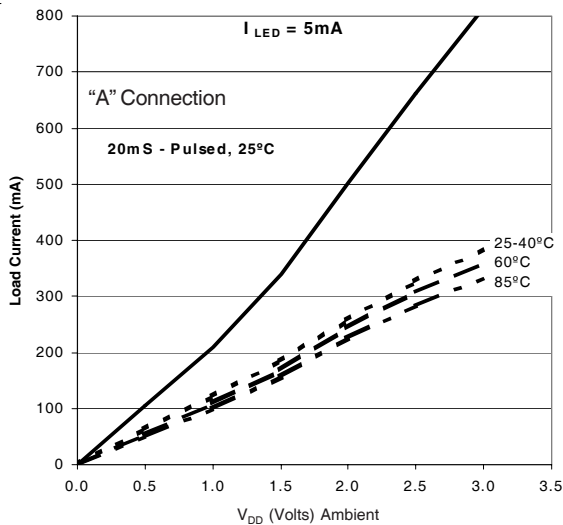


Figure 3. Typical On-Characteristics

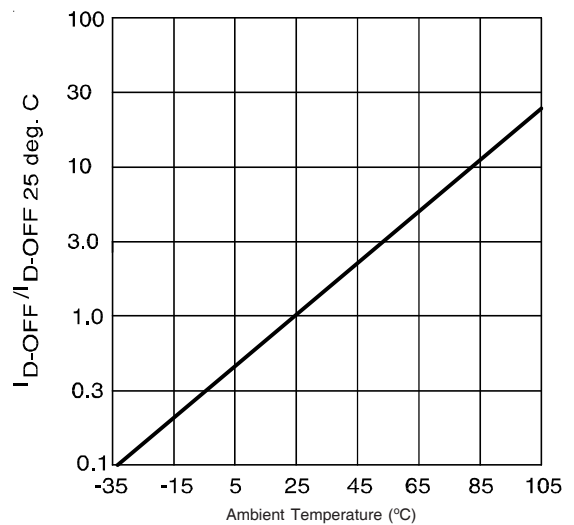


Figure 4. Typical Normalized Off-State Leakage

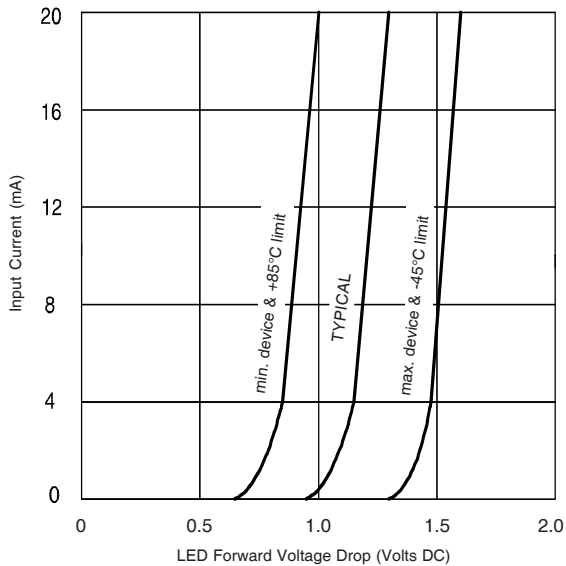


Figure 5. Input Characteristics (Current Controlled)

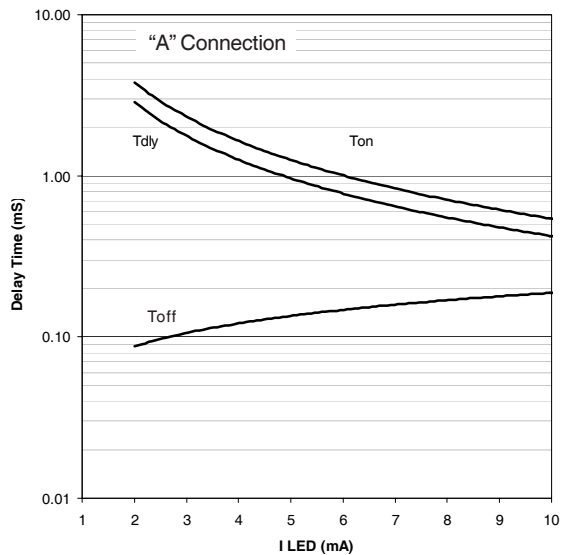


Figure 6. Typical Delay Times

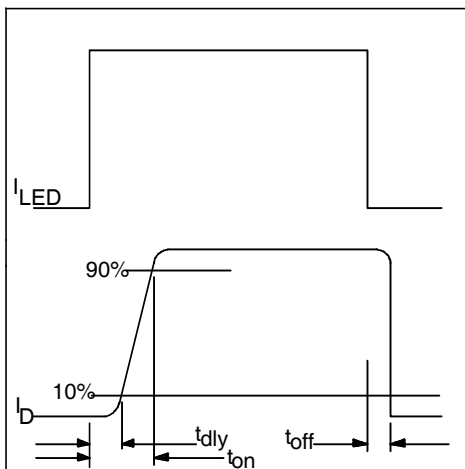


Figure 7. Delay Time Definitions

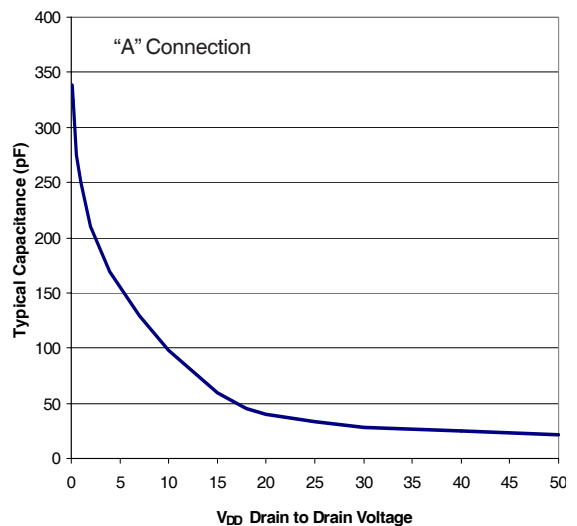
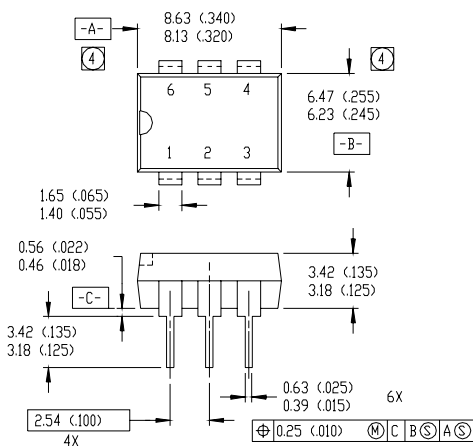


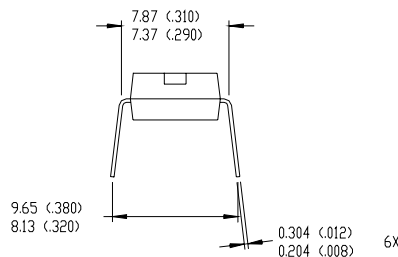
Figure 8. Typical Output Capacitance

Case Outlines

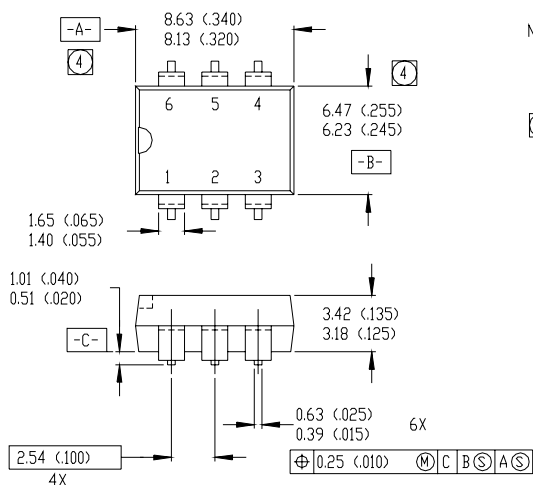


NOTES:

- 1 DIMENSIONING & TOLERANCING PER ANSI Y14.5M-1982.
2 CONTROLLING DIMENSION: INCH.
3 DIMENSIONS ARE SHOWN IN MILLIMETERS (INCHES).
4 DIMENSION DOES NOT INCLUDE MOLD PROTUSIONS. MOLD
PROTUSIONS SHALL NOT EXCEED 0.25 (0.010).

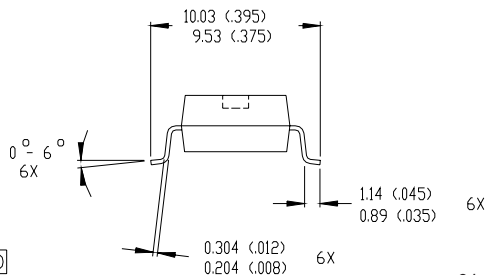


01-2008 01



NOTES:

- 1 DIMENSIONING & TOLERANCING PER ANSI Y14.5M-1982.
2 CONTROLLING DIMENSION: INCH.
3 DIMENSIONS ARE SHOWN IN MILLIMETERS (INCHES).
4 DIMENSION DOES NOT INCLUDE MOLD PROTRUSIONS. MOLD
PROTRUSIONS SHALL NOT EXCEED 0.25 (.010).



01-2009 01

Note: For the most current drawing please refer to IR website at: <http://www.irf.com/package/>

Qualification information[†]

Qualification level	Industrial (per JEDEC JESD471 ^{††} guidelines)	
Moisture Sensitivity Level	PVT412APbF	N/A
	PVT412ASPbF	MSL4
	PVT412AS-TPbF	(per JEDEC J-STD-020E & JEDEC J-STD-033C ^{††})
RoHS compliant	Yes	

[†] Qualification standards can be found at International Rectifier's web site: <http://www.irf.com/product-info/reliability>

^{††} Applicable version of JEDEC standard at the time of product release

Revision History

Date	Comments
6/2/2015	<ul style="list-style-type: none"> Added Qualification Information Table on page 6 Updated data sheet with new IR corporate template

International
 Rectifier

IR WORLD HEADQUARTERS: 101 N. Sepulveda Blvd., El Segundo, California 90245, USA

Data and specifications subject to change without notice

To contact International Rectifier, please visit <http://www.irf.com/whoto-call/>

Mouser Electronics

Authorized Distributor

Click to View Pricing, Inventory, Delivery & Lifecycle Information:

[Infineon:](#)

[PVT412APBF](#) [PVT412AS-TPBF](#) [PVT412ASPBF](#)