

KIT_XMC7200_MC1 Motor Control Evaluation Kit guide

About this document

About this document

The document describes the features and hardware details of the XMC7200 motor control card, which is designed to serve as an evaluation platform for motor control applications with the XMC7000 dual-core Arm® Cortex® M7-based microcontroller. This board is a part of Infineon's motor control evaluation platform kits.

Intended audience

This document is intended for KIT_XMC7200_MC1 users. This board is intended to be used under laboratory conditions.

Reference board/kit

Product(s) embedded on a PCB with a focus on specific applications and defined use cases that may include software. PCB and auxiliary circuits are optimized for the requirements of the target application.

Note: *Boards do not necessarily meet safety, EMI, or quality standards (e.g., UL, CE) requirements.*

Important notice**Important notice**

“Evaluation Boards and Reference Boards” shall mean products embedded on a printed circuit board (PCB) for demonstration and/or evaluation purposes, which include, without limitation, demonstration, reference and evaluation boards, kits and design (collectively referred to as “Reference Board”).

Environmental conditions have been considered in the design of the Evaluation Boards and Reference Boards provided by Infineon Technologies. The design of the Evaluation Boards and Reference Boards has been tested by Infineon Technologies only as described in this document. The design is not qualified in terms of safety requirements, manufacturing and operation over the entire operating temperature range or lifetime.

The Evaluation Boards and Reference Boards provided by Infineon Technologies are subject to functional testing only under typical load conditions. Evaluation Boards and Reference Boards are not subject to the same procedures as regular products regarding returned material analysis (RMA), process change notification (PCN) and product discontinuation (PD).

Evaluation Boards and Reference Boards are not commercialized products, and are solely intended for evaluation and testing purposes. In particular, they shall not be used for reliability testing or production. The Evaluation Boards and Reference Boards may therefore not comply with CE or similar standards (including but not limited to the EMC Directive 2004/EC/108 and the EMC Act) and may not fulfill other requirements of the country in which they are operated by the customer. The customer shall ensure that all Evaluation Boards and Reference Boards will be handled in a way which is compliant with the relevant requirements and standards of the country in which they are operated.

The Evaluation Boards and Reference Boards as well as the information provided in this document are addressed only to qualified and skilled technical staff, for laboratory usage, and shall be used and managed according to the terms and conditions set forth in this document and in other related documentation supplied with the respective Evaluation Board or Reference Board.

It is the responsibility of the customer’s technical departments to evaluate the suitability of the Evaluation Boards and Reference Boards for the intended application, and to evaluate the completeness and correctness of the information provided in this document with respect to such application.

The customer is obliged to ensure that the use of the Evaluation Boards and Reference Boards does not cause any harm to persons or third party property.

The Evaluation Boards and Reference Boards and any information in this document is provided "as is" and Infineon Technologies disclaims any warranties, express or implied, including but not limited to warranties of non-infringement of third party rights and implied warranties of fitness for any purpose, or for merchantability.

Infineon Technologies shall not be responsible for any damages resulting from the use of the Evaluation Boards and Reference Boards and/or from any information provided in this document. The customer is obliged to defend, indemnify and hold Infineon Technologies harmless from and against any claims or damages arising out of or resulting from any use thereof.

Infineon Technologies reserves the right to modify this document and/or any information provided herein at any time without further notice.

Safety precautions**Safety precautions****Table 1** **Safety precautions**






	Caution: <i>The heat sink and device surfaces of the evaluation or reference board may become hot during testing. Hence, necessary precautions are required while handling the board. Failure to comply may cause injury.</i>
	Caution: <i>Only personnel familiar with the drive, power electronics and associated machinery should plan, install, commission and subsequently service the system. Failure to comply may result in personal injury and/or equipment damage.</i>
	Caution: <i>The evaluation or reference board contains parts and assemblies sensitive to electrostatic discharge (ESD). Electrostatic control precautions are required when installing, testing, servicing or repairing the assembly. Component damage may result if ESD control procedures are not followed. If you are not familiar with electrostatic control procedures, refer to the applicable ESD protection handbooks and guidelines.</i>
	Caution: <i>A drive that is incorrectly applied or installed can lead to component damage or reduction in product lifetime. Wiring or application errors such as undersizing the motor, supplying an incorrect or inadequate AC supply, or excessive ambient temperatures may result in system malfunction.</i>
	Caution: <i>The evaluation or reference board is shipped with packing materials that need to be removed prior to installation. Failure to remove all packing materials that are unnecessary for system installation may result in overheating or abnormal operating conditions.</i>

Table of contents
Table of contents

	About this document	1
	Important notice	2
	Safety precautions	3
	Table of contents	4
1	Introduction	5
1.1	Kit contents	5
1.2	Getting started	5
1.3	Key features	6
2	Kit operation	7
2.1	Using the OOB example	10
2.1.1	Standalone operation	10
2.1.2	GUI operation	11
2.1.2.1	Create a new project	11
2.1.2.2	Configurator view	12
2.1.2.3	Test bench view	12
2.2	Creating a project and programming/debugging using ModusToolbox™	13
3	Hardware	18
3.1	Hardware and functional description	18
3.2	XMC7200 motor control card	18
3.3	XMC7200 MCU	18
3.4	XMC7200 MCU power supply system	20
3.5	XMC7200 MCU I/O connectors	22
3.6	100-pin HD connector interface	25
3.7	ADC input buffers	28
3.8	Reset and user buttons	29
3.9	Potentiometers and user LEDs	29
3.10	Digital isolators and CAN interface	30
3.11	XMC7200 MCU clock architecture	31
3.12	XMC7200 MCU external programming/debugging headers	32
3.13	XMC4200 as an onboard programmer/debugger	33
3.14	Hall sensor and encoder interface	34
3.15	Drive adapter card	37
3.16	KIT_MOTOR_DC_250W_24V power board	41
4	Production data	42
	Revision history	43
	Disclaimer	44

1 Introduction

1 Introduction

The XMC7200_MC1 motor control kit allows for the evaluation and development of motor control applications using the [XMC7200D microcontroller](#) (XMC7200D).

XMC7200D is designed for industrial applications and is a true programmable embedded system-on-chip, integrating up to two 350-MHz Arm® Cortex®-M7 as the primary application processors, a 100-MHz Arm® Cortex®-M0+ that supports low-power operations, up to 8-MB flash and 1-MB SRAM, Gigabit Ethernet, Controller Area Network Flexible Data-Rate (CAN FD), Secure Digital Host Controller (SDHC) supporting SD/SDIO/eMMC interfaces, programmable analog and digital peripherals that allow faster time-to-market.

KIT_XMC7200_MC1 motor control kit includes a power stage inverter card, adapter card, BLDC motor, and XMC7200_DC_V1 drive card featuring two potentiometers, a push button, and two user LEDs for easy interaction and visual feedback. It incorporates a USB Type-C connector for convenient USB device connectivity. Onboard debugger based on J-Link simplifies programming and debugging tasks. Additionally, it offers a Trace box and ETM header. With four hall sensor headers, four encoder headers, a mikroBUS header, and a high-density connector, it provides flexibility and expandability for sensor integration and connectivity options. The board supports operating voltages from 3.3 V to 5.0 V for XMC7200D.

[ModusToolbox™](#) is used to develop and debug XMC7200D projects. It is a set of tools that enables integration of these devices into existing development methodology.

For additional information about XMC7200D, see [AN234334 - Getting started with XMC7000 MCU on ModusToolbox™ software](#), which assists in creating custom designs using the Eclipse IDE for ModusToolbox™ software.

1.1 Kit contents

The kit includes the following contents:

- [KIT_XMC7200_DC_V1](#) motor control card
- Drive adapter card
- [KITMOTORDC250W24VTOBO1 power board](#)
- USB Type-A to USB Type-C cable
- [Nanotec DB42M03 24 V BLDC motor](#)
- 24 V/1 A AC/DC power adapter
- Quick start guide

1.2 Getting started

This guide aims to familiarize you with the evaluation kit.

- The [Kit operation](#) section describes the major features and functionalities such as programming, debugging, and USB-UART bridges of the XMC7200 motor control card
- The [Hardware section](#) provides a detailed hardware description
- Application development using the XMC7200 motor control card is supported in ModusToolbox™. ModusToolbox™ is a free development ecosystem that includes the Eclipse IDE for ModusToolbox™ and the XMC7200 SDK along with XMC7200 MCU. Using ModusToolbox™, you can enable and configure device resources, middleware libraries, write C/assembly source codes, and program or debug the device. For more information, see the [ModusToolbox™ software installation guide](#)
- Code examples are available for evaluating the XMC7200 motor control card. These examples help you become familiar with the XMC7200 MCU and create your own designs. These examples can be accessed through the [ModusToolbox™ Project Creator](#) tool. Additionally, see [Infineon code examples for ModusToolbox™ software](#) to access these examples

1 Introduction

1.3 Key features

The XMC7200 motor control card features:

- An Infineon XMC7200 dual-core (Arm® Cortex® M7-based) microcontroller **XMC7200D-F176K8384**, 350 MHz, 8 MB flash/1 MB SRAM, TEQFP-176
- Connection to [MADK boards](#) (M1/M3/M5) and Samtec 2x30 pins HSEC8 connector for [LV15W](#) card via a 100-pin HD connector connected to the XMC™ drive adapter card
- Five LEDs
 - 1 Power LED
 - 2 USER LED: User-controlled LED
 - 2 DEBUG LED & AUX LED: Debugger-controlled LEDs
- Isolated debug options (default)
 - Onboard debugger (SEGGER J-Link LITE) via a USB connector
 - Isolation must be built between this connector and the computer side to prevent overvoltage in the computer
- Isolated connectivity
 - UART channel of on-board debugger (SEGGER J-Link LITE) via USB connector
 - CAN interface on a 4-pin header X14
- 2 non-isolated debug options
 - SWD/JTAG via 10-pin 1.27 mm header
 - ETM trace via 20-pin 1.27 mm header
- Power supply of XMC7200D MCU
 - Via 100-pin expansion board (5 V or 24 V) converted to 3.3 V or 5 V
 - Via debug USB connector, 5 V isolated DC-DC converted to 3.3 V or 5 V
- Power supply of XMC4200 MCU in isolated debug domain
 - Via debug USB connector
- KITMOTORDC250W24VTOBO1 power board
 - Rated voltage: 24 V and rated power: 250 W
 - Three shunt and single shunt operation
- DB42M03 brushless DC motor
- 24 V/1 A AC/DC power adapter

2 Kit operation

2 Kit operation

The XMC7200 motor control card serves as an evaluation board to aid engineers in developing XMC7000-based motor control solutions in combination with suitable power stage evaluation boards featuring the MADK connector (M1/M3/M5). The board is equipped with an isolated onboard debugger for programming and debugging via a USB interface. Additionally, it features a USB VCOM functionality using the same USB connection utilized for the debugger.

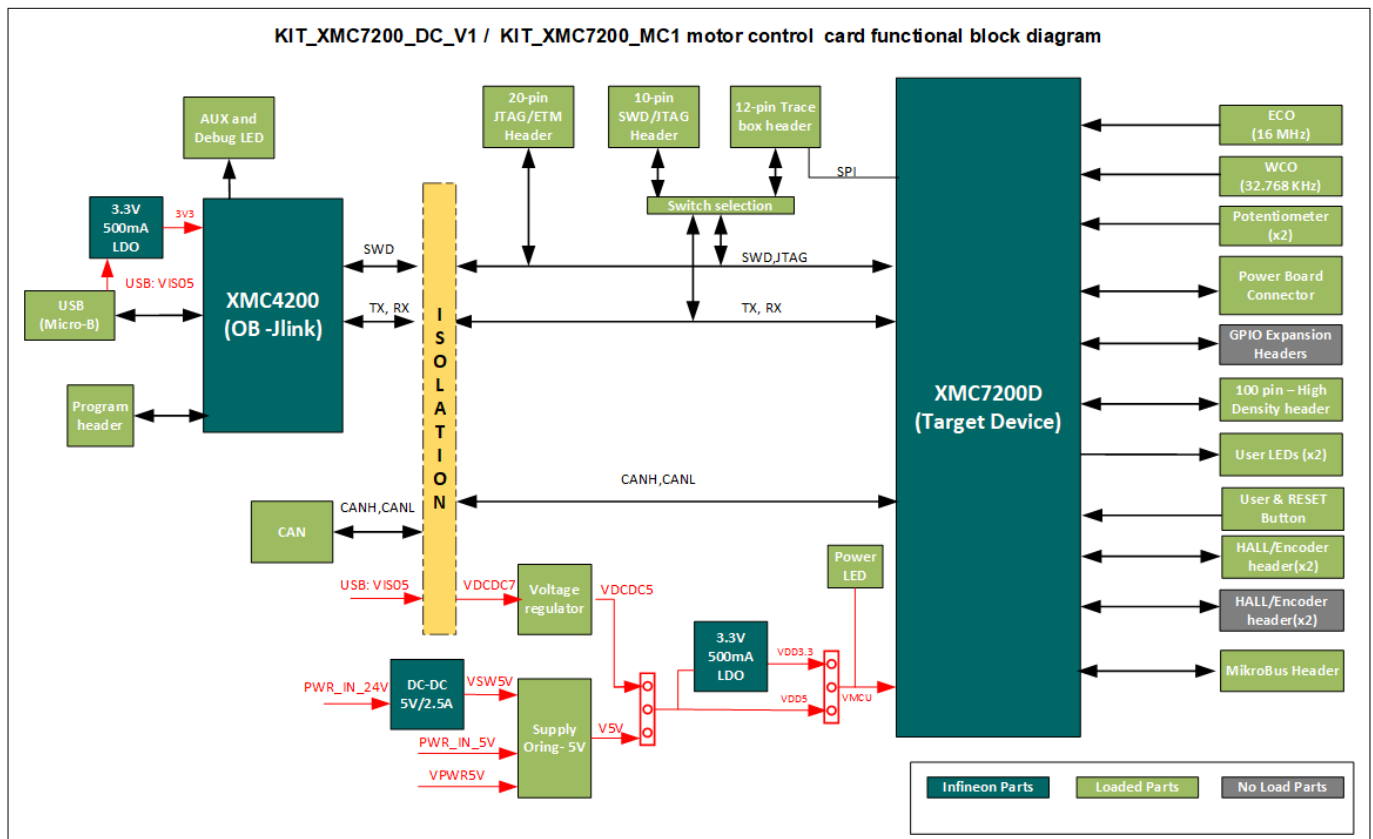


Figure 1 KIT_XMC7200_DC_V1 motor control card block diagram

2 Kit operation

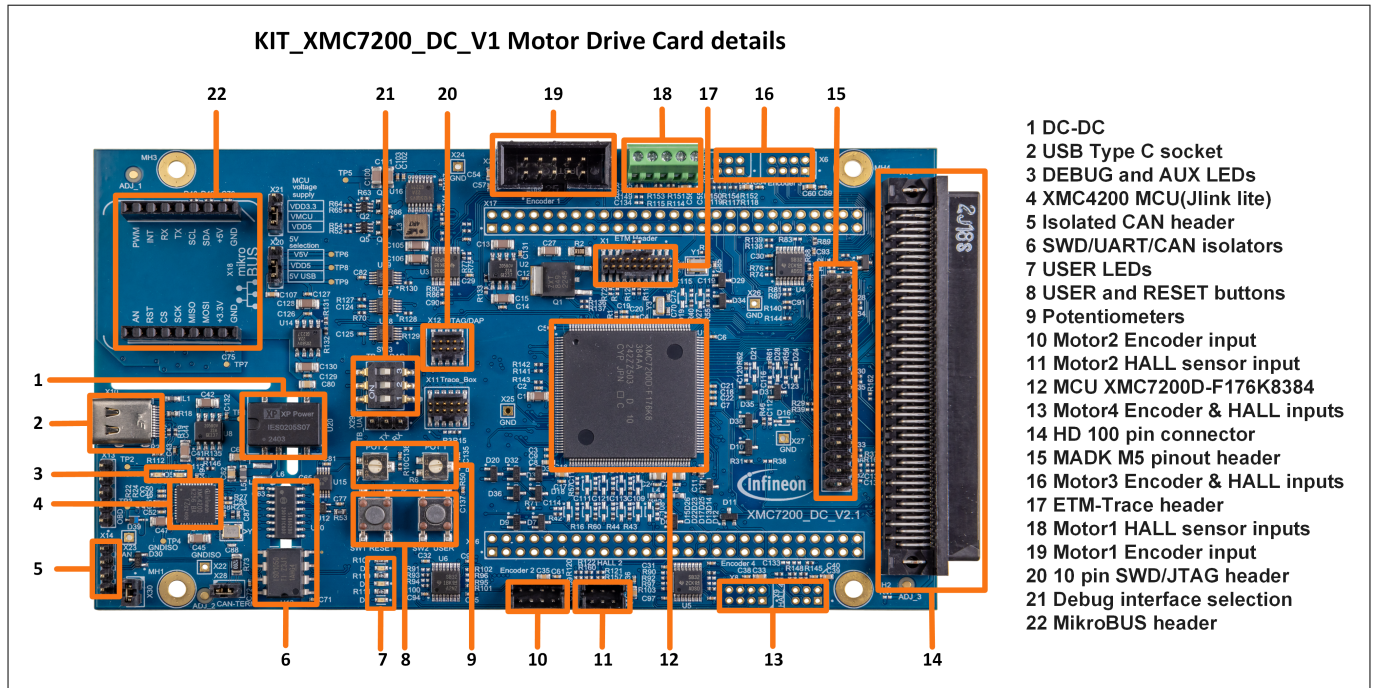


Figure 2 KIT_XMC7200_DC_V1 motor control card details

2 Kit operation

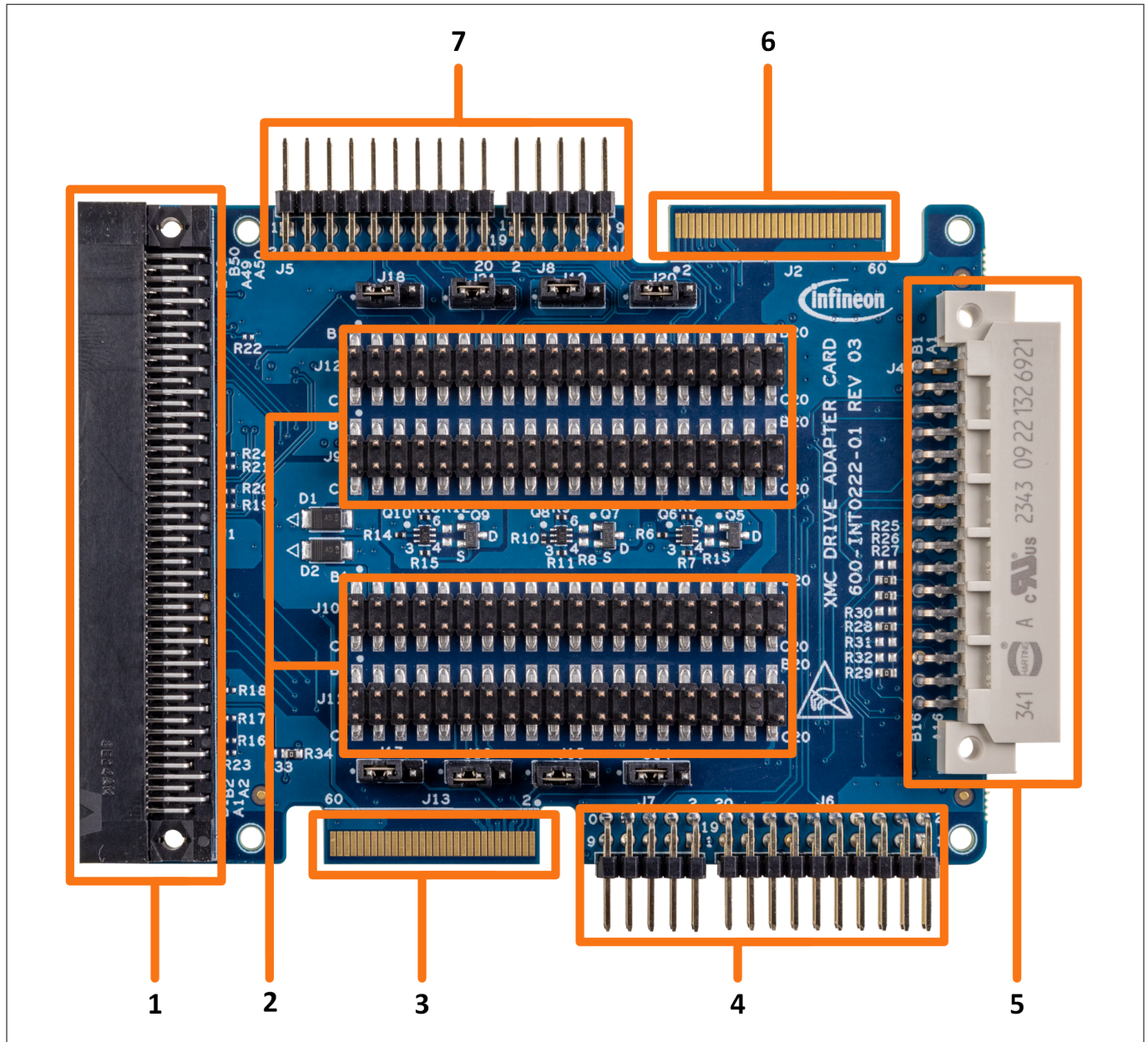


Figure 3 Drive adapter card details

The components present in the drive adapter card are:

1. 100-pin HD connector (J1)
2. 2x20 headers (J9, J10, J11, J12)
3. Samtec connector (J13)
4. MADK M1 connector (J6) and MADK M3 connector (J6 + J7)
5. MADK M5 connector (J4)
6. Samtec connector (J2)
7. MADK M1 connector (J5) and MADK M3 connector (J5 + J8)

2 Kit operation

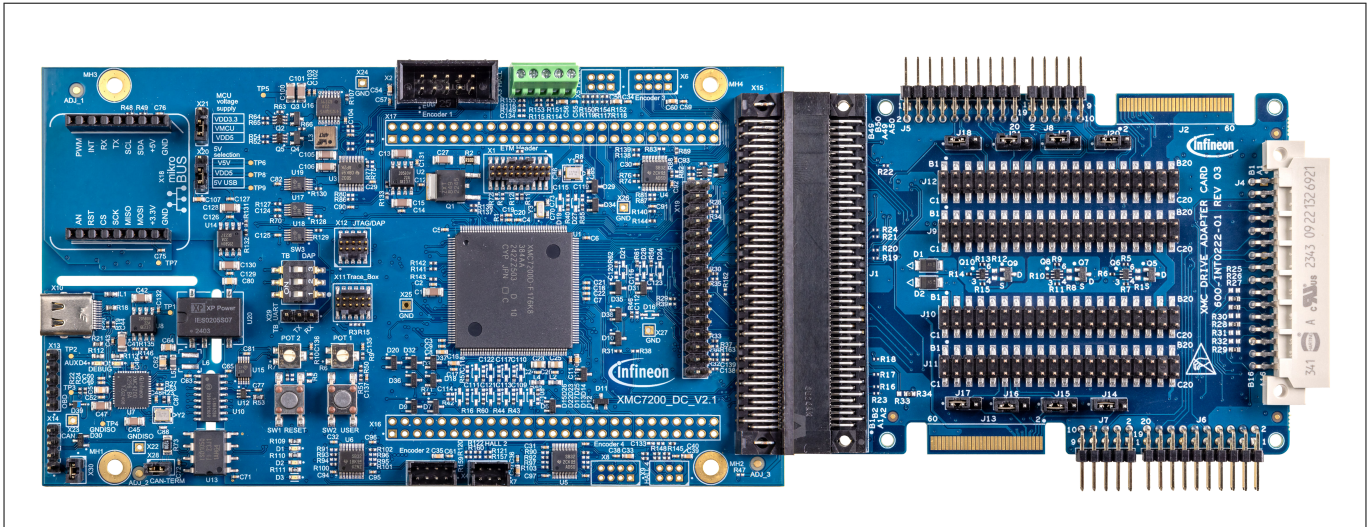


Figure 4 KIT_XMC7200_DC_V1 motor control card connected to the drive adapter card

2.1 Using the OOB example

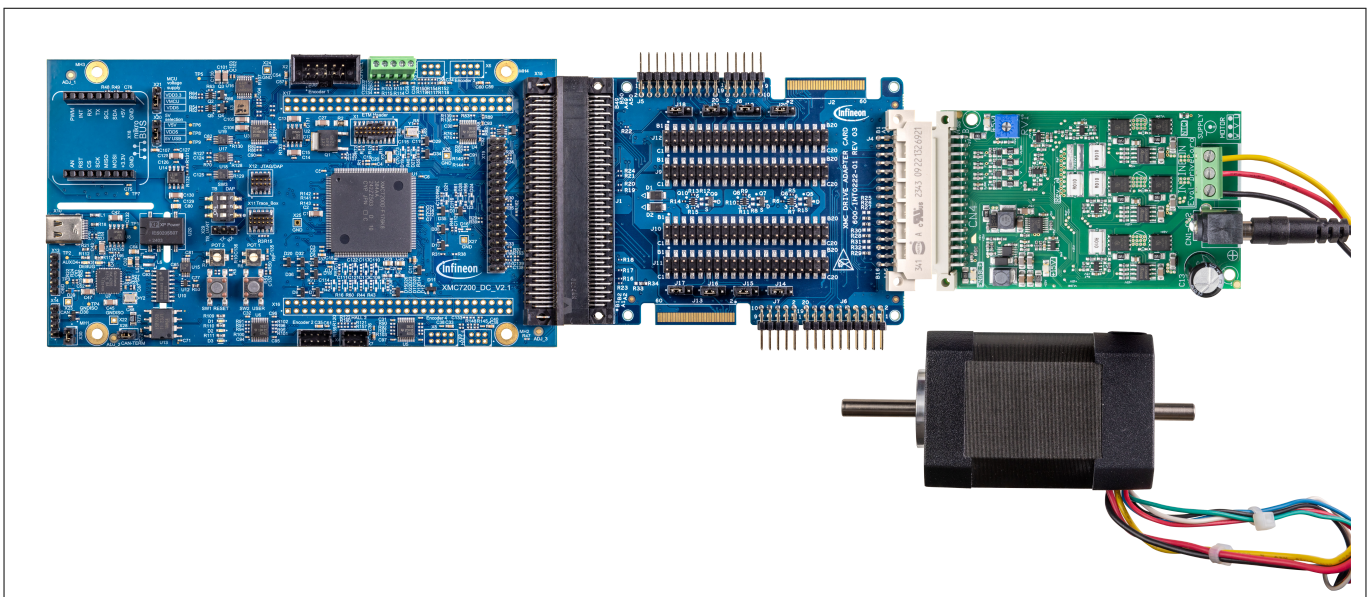


Figure 5 KIT_XMC7200_MC1 complete setup with motor

2.1.1 Standalone operation

The MCU is pre-programmed with the out-of-box (OOB) firmware, configured to run the included motor in sensorless field-oriented control (FOC) three-shunt mode. To ensure proper operation:

1. Set the input voltage selection jumper (X20) to position 2-3 (V5V)
2. Set the VMCU voltage selection jumper (X21) to position 1-2 (VDD5)
3. Connect the control and power board using the adapter board as shown in [Figure 5](#)
4. Connect the motor wires to the motor screw terminal connector (CN3) on the power board as follows:
 - **Yellow:** U
 - **Red:** V
 - **Black:** W

2 Kit operation

5. Connect the 24 V/1 A power adapter to the DC input barrel jack (CN1) on the power board and turn on the power supply
6. The motor shaft spins in a clockwise direction (with respect to the motor front side)
7. The motor speed is controlled by the potentiometer POT1 (R6). Use the provided screwdriver to adjust the potentiometer setting
8. The user button (SW2) is used to change the motor direction. When pressed, the motor speed ramps down to '0' and stops. To restart the motor in the reverse direction, set the potentiometer (R6) to zero speed and then increase the speed
9. User LED1 (yellow) indicates the following motor directions:
 - On: For clockwise direction
 - Off: For counter-clockwise direction

Note: The motor speed depends on the potentiometer setting. If the potentiometer is set to '0' (fully turned in a clockwise direction), the motor will not run.

2.1.2 GUI operation

2.1.2.1 Create a new project

1. Install ModusToolbox™ Motor Suite GUI from Industrial MCU Technology Pack
2. Ensure that all the micro switches of SW3 are on the right side for proper operation
3. Follow steps 1 to 4 as described in the standalone operation section to set up the hardware
4. Connect the USB cable to the PC and the control card USB socket
5. Open the ModusToolbox™ Motor Suite GUI
6. Navigate to XMC7200 Motor Control Drive Kit, select RFO, and click **New Project** to open the configurator view

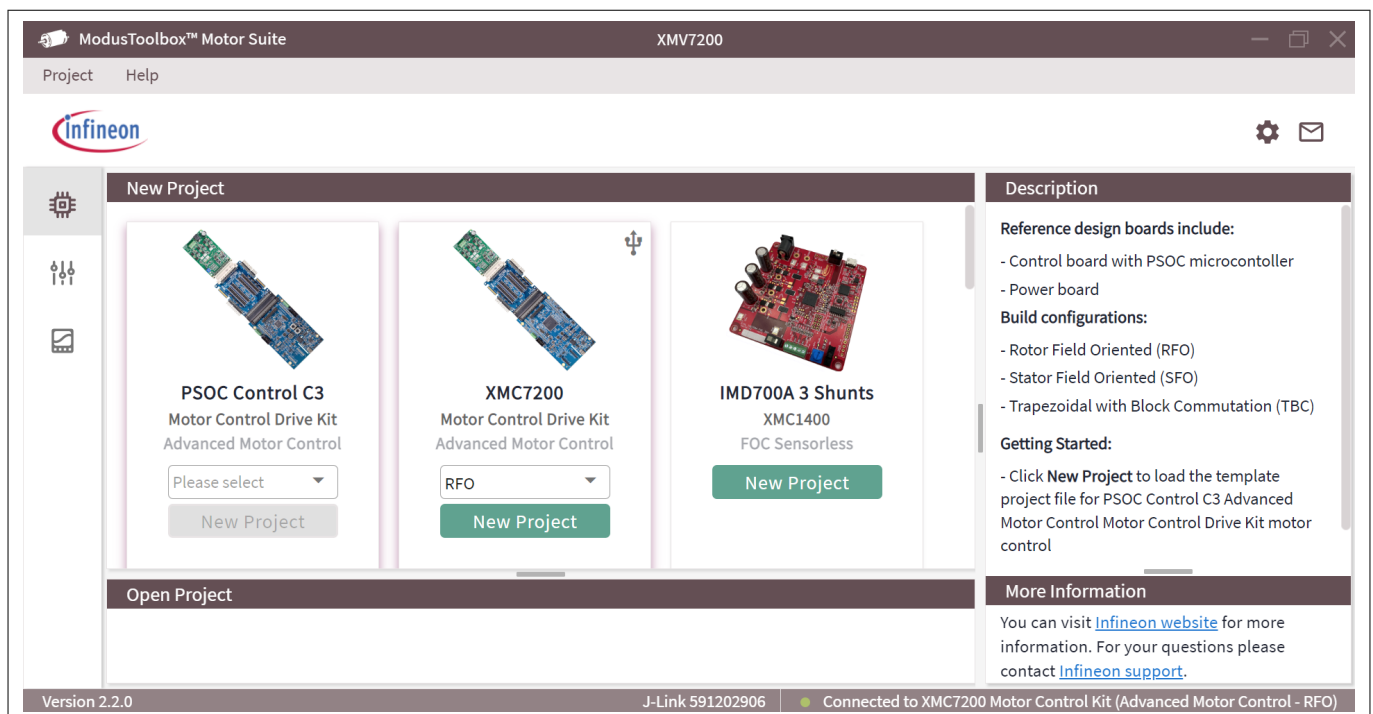


Figure 6 GUI: Open new project

2 Kit operation

2.1.2.2 Configurator view

1. A green color at the bottom of the suite indicates a successful connection
2. Configure the static parameters in the configurator view
3. Click **Flash Firmware** to reprogram the default firmware
4. Click the **Test bench** button to switch to the test bench view

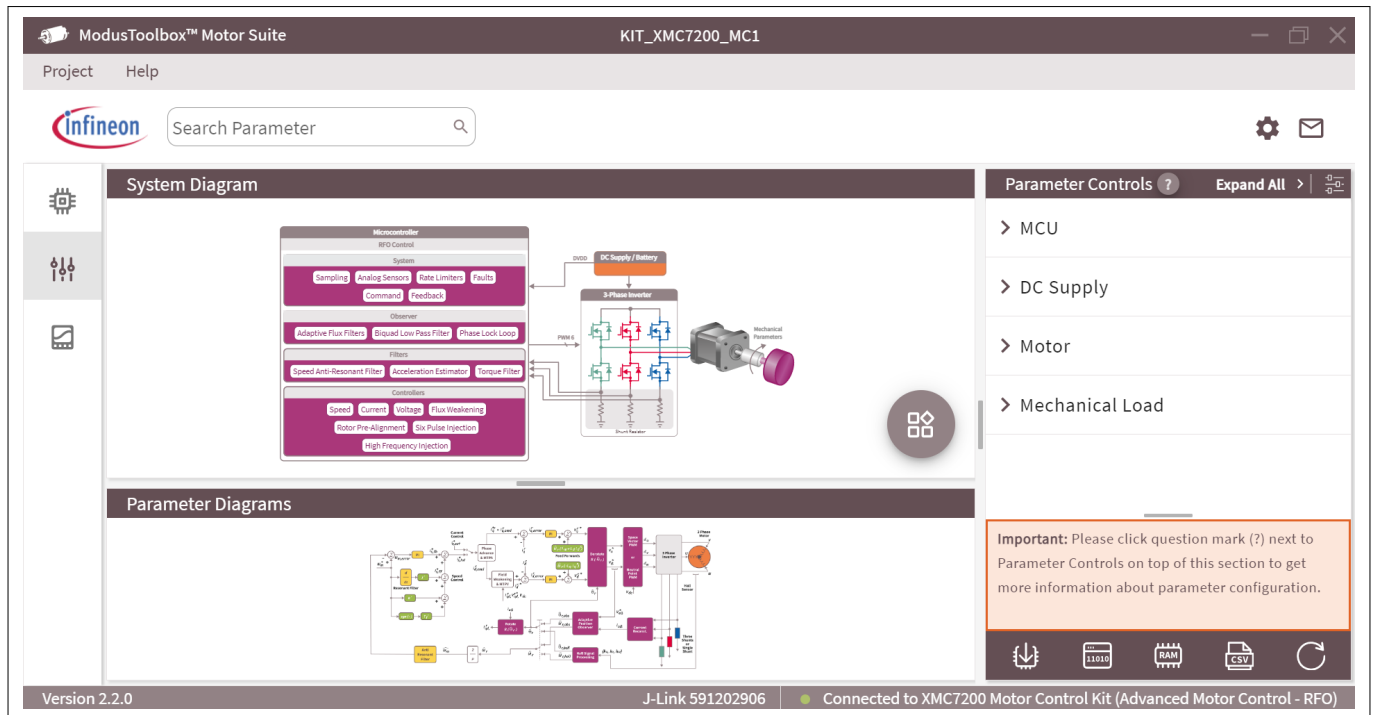


Figure 7 GUI: Configurator view

2.1.2.3 Test bench view

1. In the command panel, use the drive switch to enable or disable the drive
2. To set the motor speed using the target set slider in the command panel, turn off the potentiometer control switch in the GUI. If the potentiometer control switch is on, the potentiometer (R6) on the kit controls the motor speed
3. Use the emergency stop to halt or restart the motor and clear faults
4. The control panel and command panel sections display various parameters, including:
 - Voltage applied
 - Currents flowing
 - DC bus voltage
 - Faults
 - Control scheme
 - State of the state machine
 - Motor direction
5. Select the oscilloscope view to stream these parameters. For more details, see the user manual located in the top left corner of the oscilloscope window

2 Kit operation

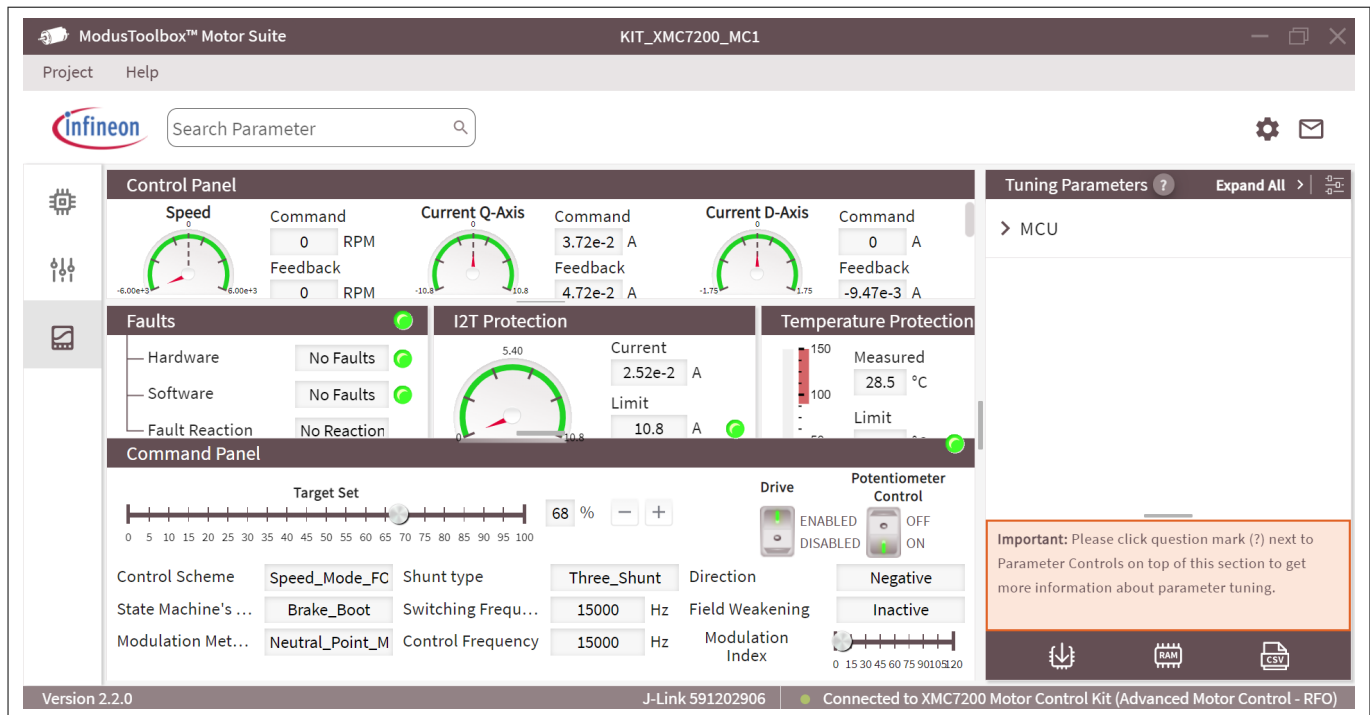


Figure 8 GUI: Test bench view

2.2 Creating a project and programming/debugging using ModusToolbox™

The XMC7200 motor control card can be programmed and debugged using the onboard J-Link debugger, which also supports USB-UART bridge functionality. An XMC4200 device is used to implement the J-Link functionality. See the [J-Link user guide](#) for more details.

The following steps provide an overview of project creation, programming, and debugging using ModusToolbox™. For more information, go to **Help > ModusToolbox™ general documentation > ModusToolbox™ user guide**.

1. Connect the board to the PC using the provided USB cable through the J-Link USB connector (X10), as shown in [Figure 9](#). It will enumerate as a USB composite device if the board is being connected to the PC for the first time. Ensure to install the latest J-Link drivers from the [Segger website](#).

2 Kit operation

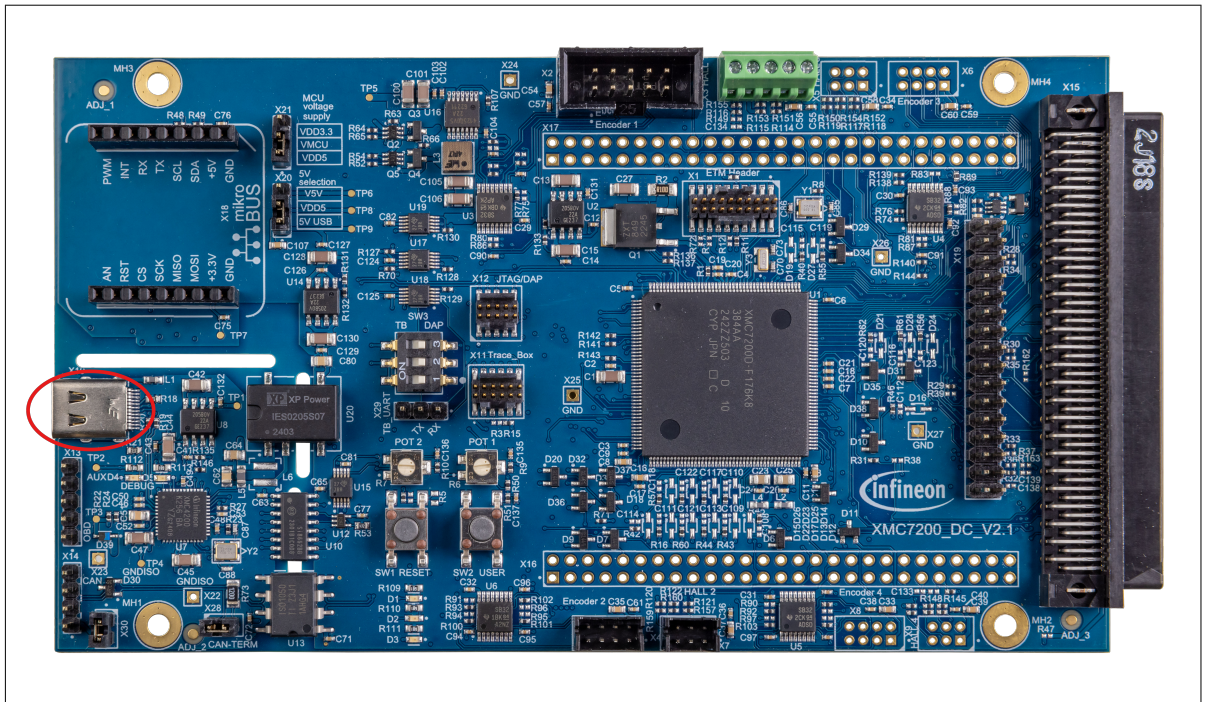


Figure 9 Connect USB cable to the USB connector on board

2. The debugger on this kit features the J-Link LITE with UART. The debug LED (green) is always ON if the USB is connected

Note: Programming can be done either with the onboard J-Link debugger (isolated) or by attaching an external debugger to the connector X12 (non-isolated) on the board. It is recommended to use the onboard J-Link debugger

3. In the Eclipse IDE for ModusToolbox™, import the desired code example (application) into a new workspace
 - a. Click on **New Application** from the Quick Panel tab

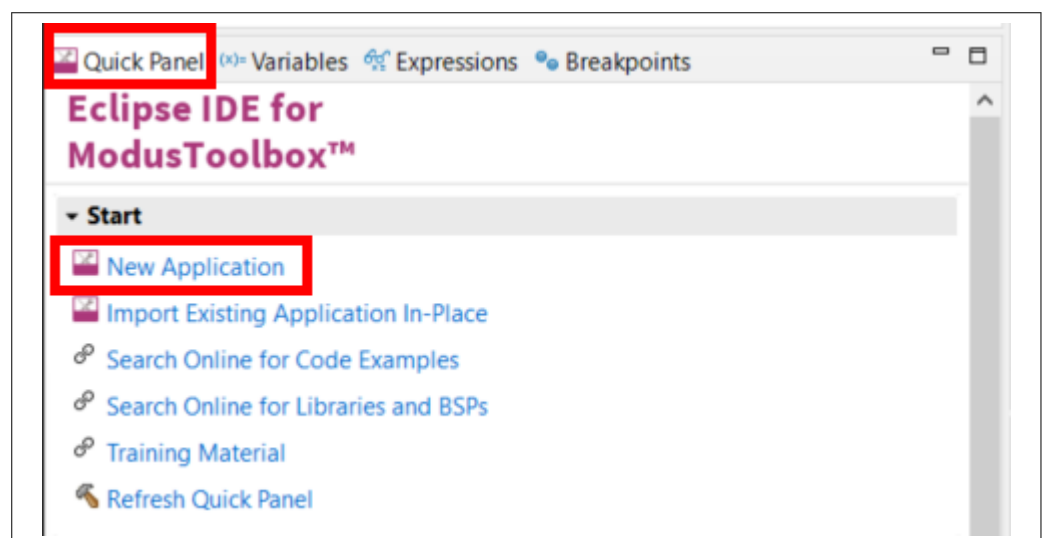


Figure 10 Create new application

- b. Select the BSP -KIT_XMC7200_DC_V1 in the Choose Board Support Package window and click **Next**

2 Kit operation

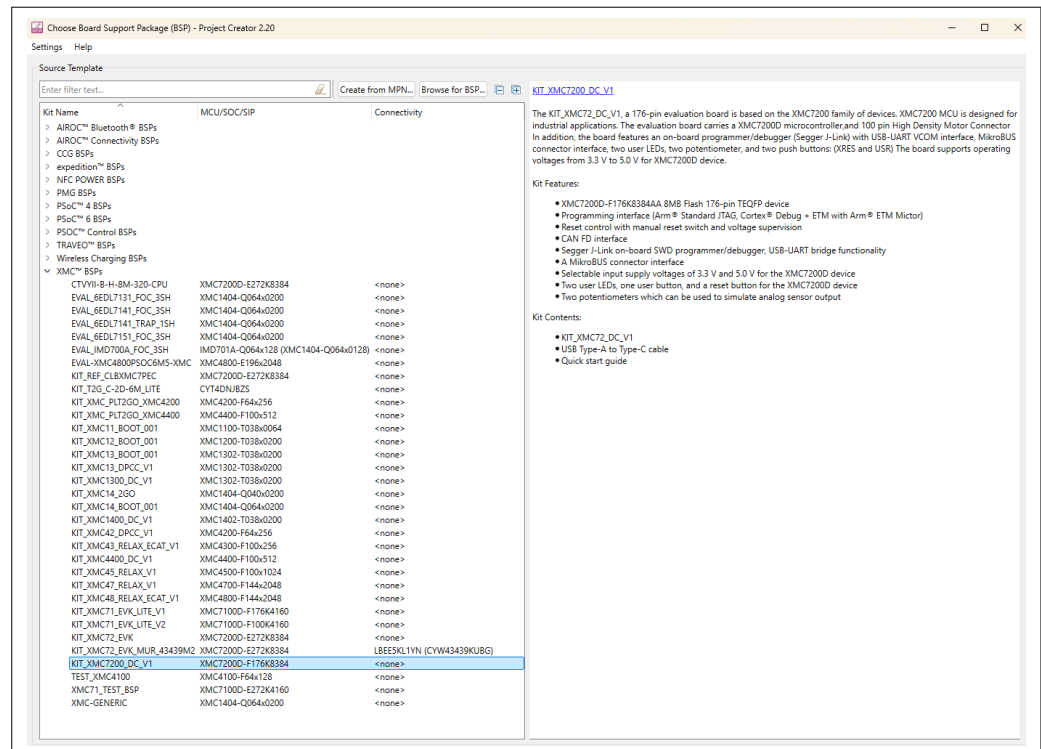


Figure 11 Choose Board Support Package

- c. Select the application in the Select Application window and click **Create**

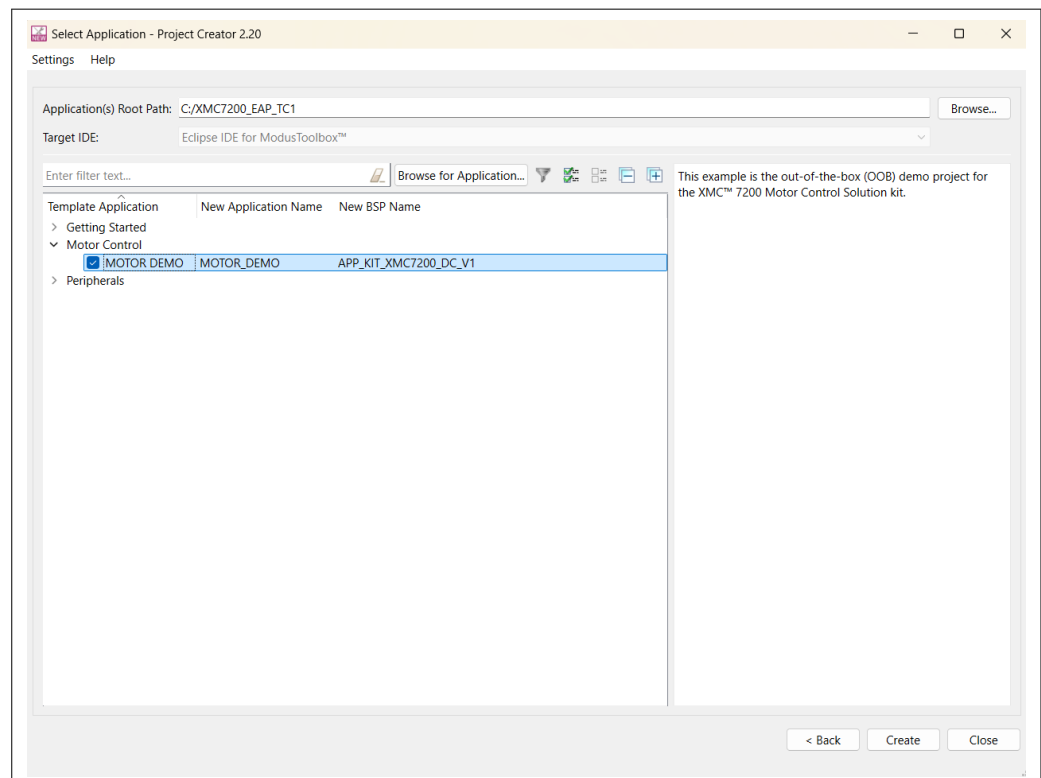


Figure 12 Select application

4. To build and program an XMC7200 MCU application, in the Project Explorer, select the **<App_Name>** project. In the Quick Panel tab, scroll to the **Launches** section and click the **<App_Name> Program** (J-Link) configuration

2 Kit operation

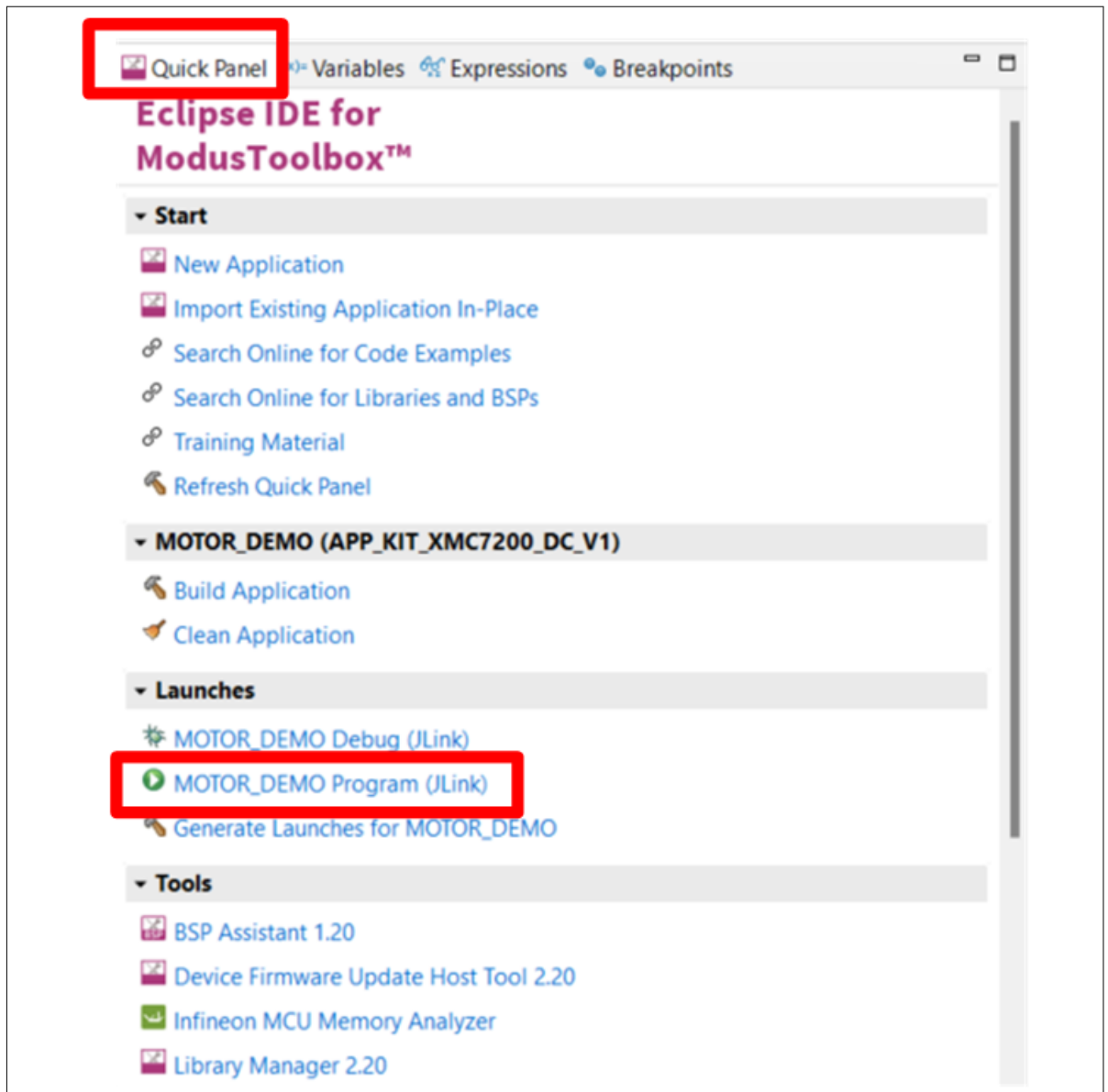


Figure 13 Programming in ModusToolbox™

5. ModusToolbox™ includes an integrated debugger. To debug an XMC7200 MCU application, in the Project Explorer, select the **<App_Name>** project. In the Quick Panel, scroll to the Launches section and click the **<App_Name> Debug (J-Link)** configuration. For more details, see the Program and debug section in the [Eclipse IDE for ModusToolbox™ user guide](#)

2 Kit operation

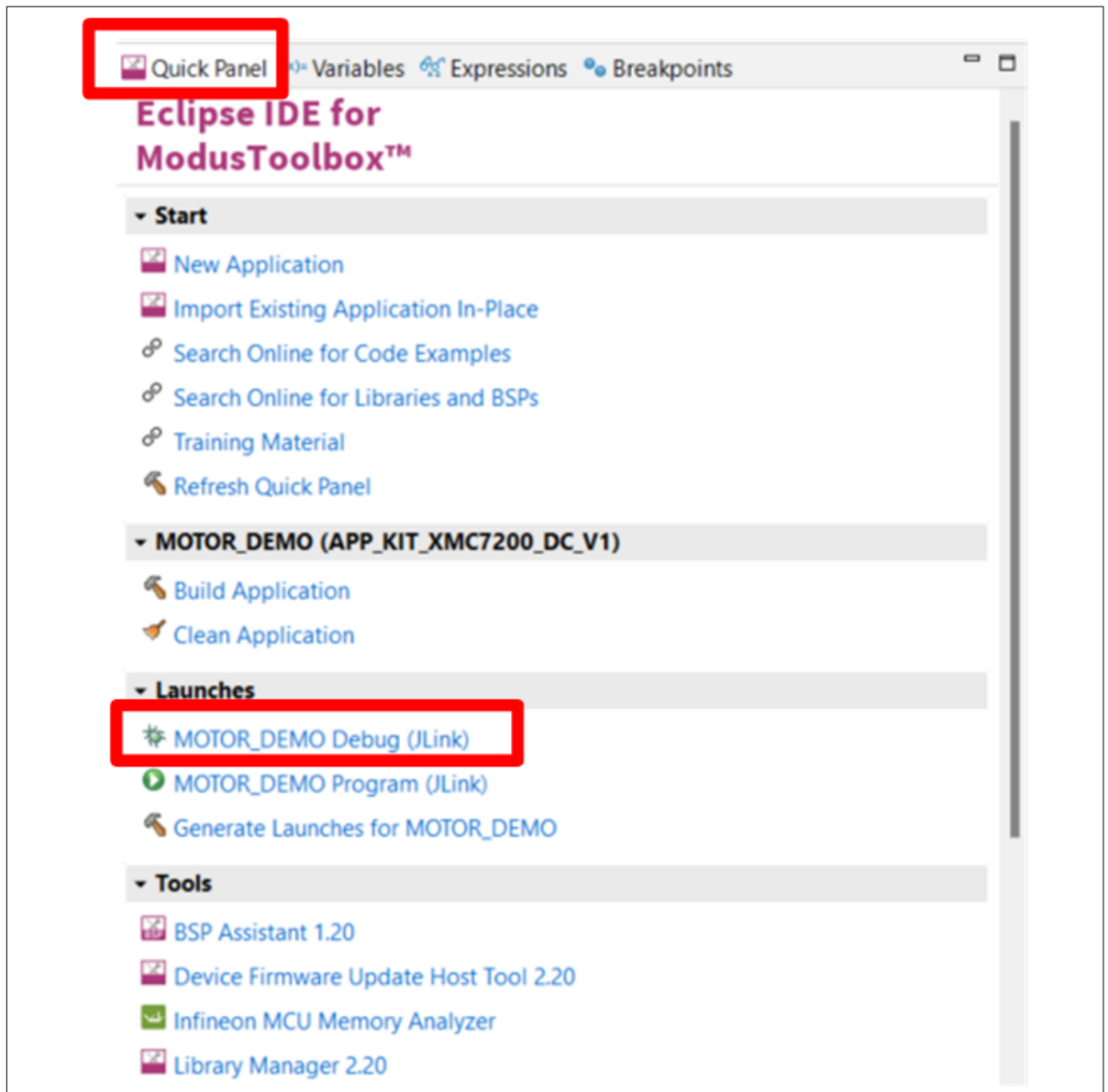


Figure 14 Debugging in ModusToolbox™

3 Hardware

3 Hardware

3.1 Hardware and functional description

This section provides a detailed explanation of the individual hardware blocks used in this kit.

3.2 XMC7200 motor control card

The control card is designed for the XMC7200D microcontroller in a TEQFP-176 package. It features an onboard isolated J-Link debugger with the XMC4200 microcontroller. All the I/Os from the XMC7200D MCU are routed out to the 100-pin high-density (HD) connector, and the resources are mapped to support up to four motor controls. The HD connector can be inserted into a mating connector on the included adapter board, which in turn facilitates connectivity to the various MADK motor control power boards.

3.3 XMC7200 MCU

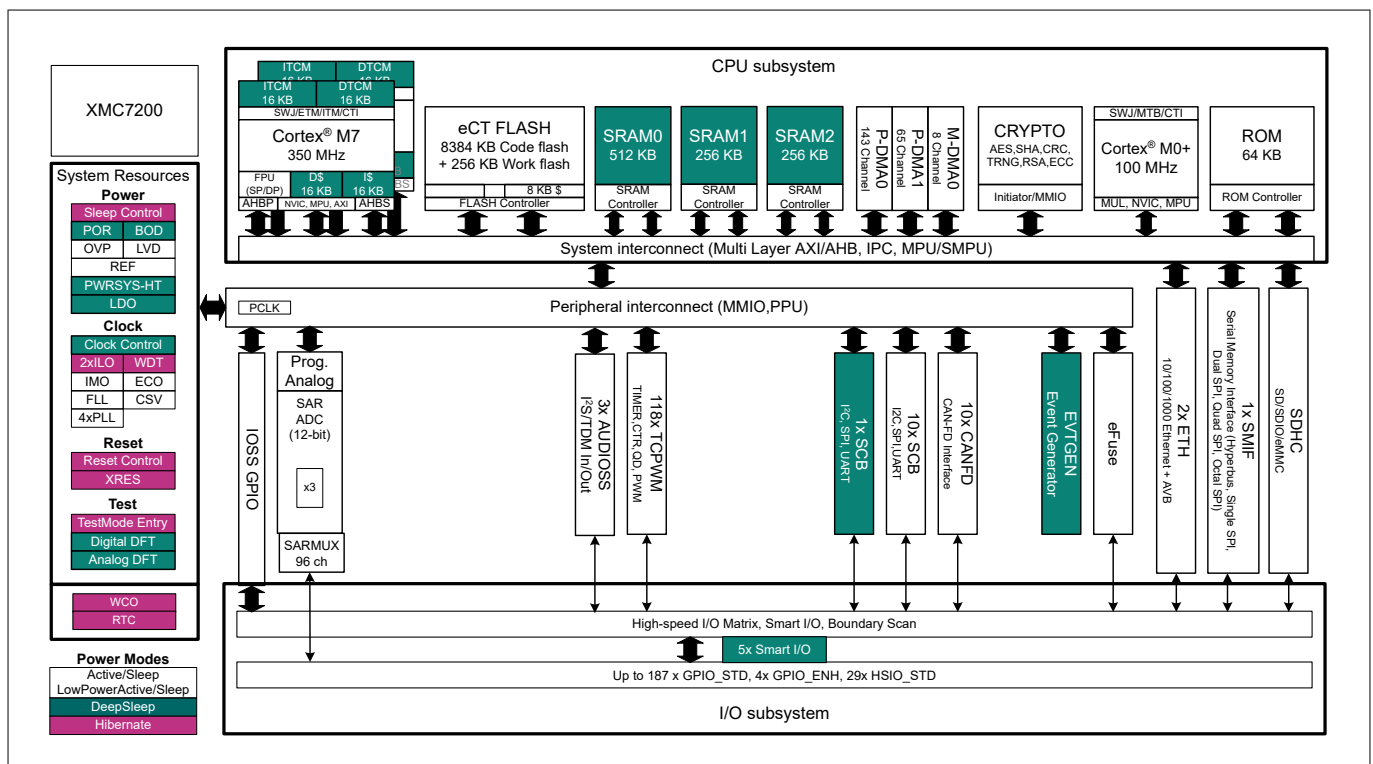


Figure 15 XMC7200 MCU block diagram

The XMC7200 motor control kit is built around XMC7200D. It incorporates Infineon's low-power flash memory, multiple high-performance analog and digital peripherals, and enables the creation of a secure computing platform.

Features

- CPU subsystem:
 - One or two 350 MHz 32-bit Arm® Cortex®-M7 CPUs
 - 100 MHz 32-bit Arm® Cortex® M0+ CPU

3 Hardware

- Hardware-based interprocessor communication
- Three DMA controllers
- Integrated memories:
 - 8384 KB of code flash with an additional 256 KB of work flash
 - 1024 KB of SRAM with selectable retention granularity
- Cryptography engine:
 - Supports Enhanced Secure Hardware Extension (eSHE) and Hardware Security Module (HSM)
 - Secure boot and authentication
- Safety for application:
 - Memory protection unit (MPU), shared memory protection unit (SMPU), peripheral protection unit (PPU), watchdog timer (WDT), multi-counter watchdog timer (MCWDT), low-voltage detector (LVD), brown-out detection (BOD), overvoltage detection (OVD), clock supervisor (CSV), hardware error correction (SECDED ECC) on all safety-critical memories (SRAM, flash, TCM)
- Low power 2.7 V to 5.5-V operation:
 - Low-power Active, Sleep, Low-power Sleep, Deep Sleep, and Hibernate modes for fine-grained power
- Clocks:
 - Internal main oscillator (IMO), internal low-speed oscillator (ILO), external crystal oscillator (ECO), watch crystal oscillator (WCO), phase-locked loop (PLL), frequency-locked loop (FLL)
- Communication interfaces:
 - Up to 10 CAN FD channels
 - Up to 11 run time-reconfigurable SCB (serial communication block) channels, each configurable as I²C, SPI, or UART
 - Up to two 10/100/1000 Mbps Ethernet MAC interfaces conforming to IEEE-802.3az
- Timers:
 - Up to 102 16-bit and 16 32-bit timer/counter pulse-width modulator (TCPWM) blocks
 - Up to 15 16-bit counters for motor control
 - Up to 87 16-bit counters and 16 32-bit counters for regular operations
 - Supports timer, capture, quadrature decoding, pulse-width modulation (PWM), PWM with dead time (PWM_DT), pseudo random PWM (PWM_PR), and shift-register (SR) modes
- External memory interface
- SDHC interface
- Audio interface
- Real-time clock (RTC)
- Programmable analog:
 - Three SAR analog or digital converters with up to 99 external channels (96 I/Os + 3 I/Os for motor control)
 - Each ADC supports 12-bit resolution and sampling rates of up to 1 Msps
 - Each ADC also supports six internal analog inputs
 - Addressing of external multiplexers is supported by each ADC
 - Each ADC has a sequencer supporting autonomous scanning of configured channels
 - Synchronized sampling of all ADCs for motor-sense applications
- I/O:
 - Up to 220 programmable I/Os
 - Three I/O types

3 Hardware

- 176-TEQFP, 24 × 24 × 1.7 mm (max), 0.5 mm lead pitch
- 272-BGA, 16 × 16 × 1.7 mm (max), 0.8 mm ball pitch
- Smart I/O:
 - Up to five Smart I/O blocks, which can perform Boolean operations on signals going to and from I/Os
 - Up to 36 I/Os (GPIO_STD) supported
- Debug interface:
 - JTAG controller and interface compliant with IEEE-1149.1-2001
 - Arm® serial wire debug (SWD) port
 - Supports Arm® embedded trace macrocell (ETM) trace

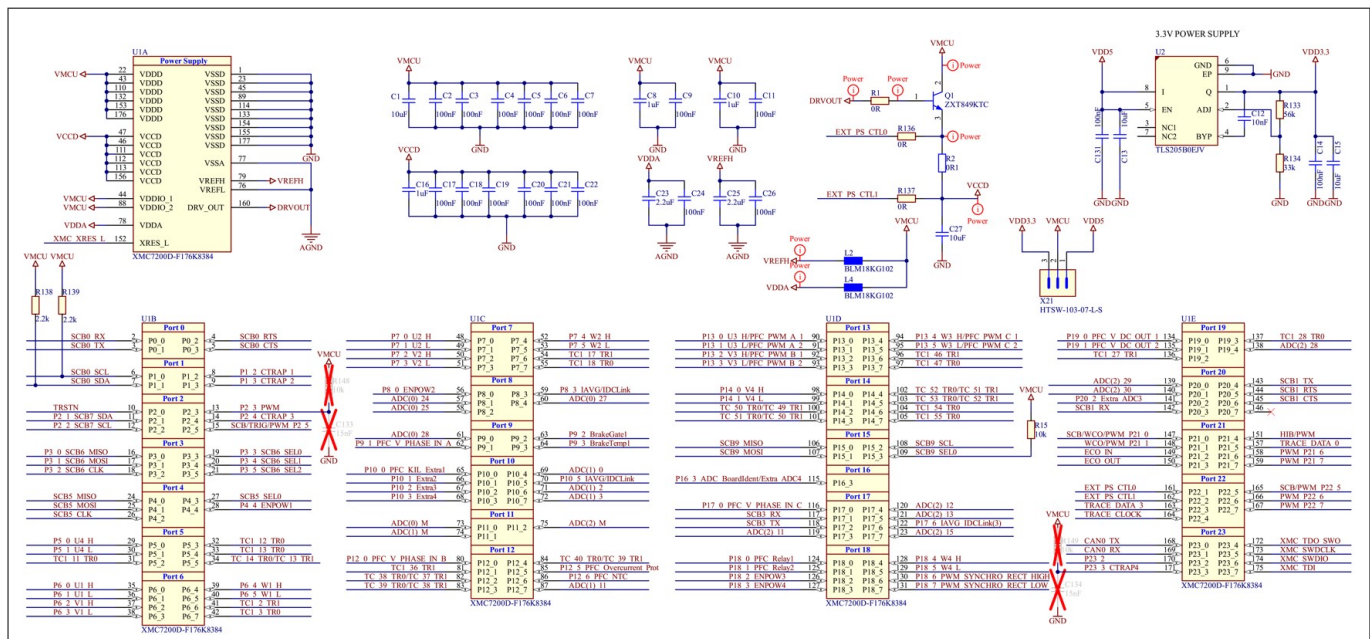


Figure 16 XMC7200 MCU pin connections

3.4 XMC7200 MCU power supply system

The XMC7200 MCU operates using a single regulated VDDD supply within the range of 2.7 V to 5.5 V. It contains three regulators that provide power to the low-voltage core transistors: Deep Sleep, core internal, and core external. These regulators accept a 2.7 V to 5.5 V VDDD supply and provide a low-noise 1.1 V supply to various parts of the device. They are automatically enabled and disabled by hardware and firmware when switching between power modes. The core internal and core external regulators operate in Active mode and provide power to the CPU subsystem and associated peripherals.

The core internal regulator supports load currents up to 300 mA and is operational during device start-up (boot process) and in Active/Sleep modes.

To support worst-case loading, with both M7 CPUs and the M0+ CPU at their maximum clock frequency and all integrated peripherals operating, a core external regulator is required, capable of loading currents up to 600 mA. The XMC7200 motor control card implements an NPN pass transistor (Q1) for the core external regulator, reducing the overall power dissipation within the XMC7200 package while maintaining a well-regulated core supply.

3 Hardware

3.5 XMC7200 MCU I/O connectors

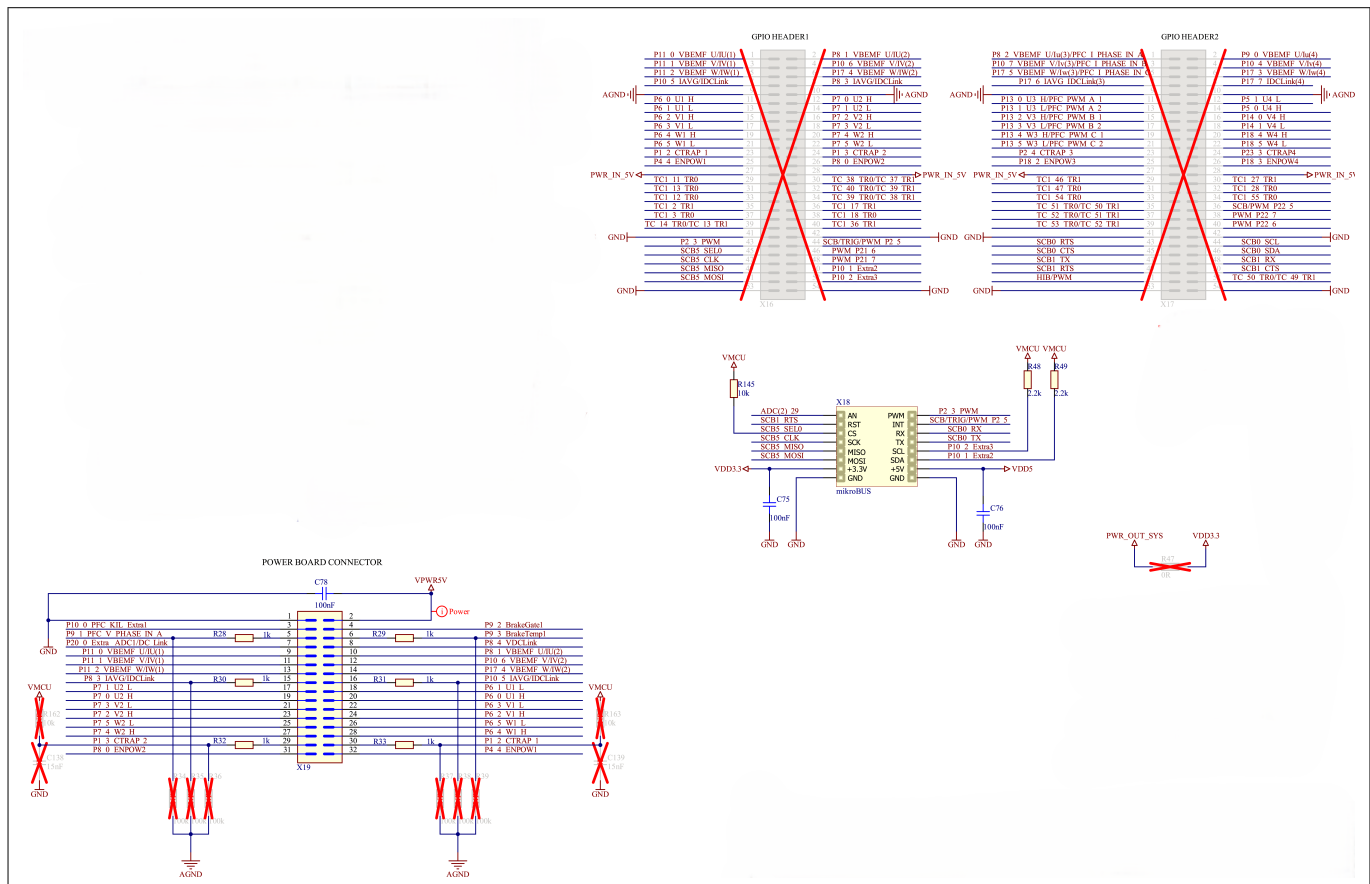


Figure 18 MADK M5 header, expansion header, and mikroBUS header

MADK M5 header (X19): The MADK M5 header offers the same pinout available in the MADK M5 connector on the drive adapter card, using a 16x2 male header with a standard 2.54 mm pitch. This header can be used for hardware debugging or probing the signals.

Table 2 MADK M5 header pin out details

Pin no.	Signal name	XMC7200 pin	Description
1	GND	GND	Ground
2	VPWR5V	NA	Power input
3	P10_0_PFC_KILL_Extra1	P10.0	PFC KILL extra digital signal
4	P9_2_BrakeGate1	P9.2	Output brake gate signal
5	P9_1_PFC_V_PHASE_IN_A	P9.1	Analog-PFC input for phase voltage or current
6	P9_3_BrakeTemp1	P3.1	Temperature feedback for motor 1 power stage
7	P20_0_Extra_ADC1/DC_Link	P20.0	Analog-PFC input for phase voltage or current

(table continues...)

3 Hardware

Table 2 (continued) MADK M5 header pin out details

Pin no.	Signal name	XMC7200 pin	Description
8	P8_4_VDCLink	P8.4	Power stage VDC link sensing signal
9	P11_0_VBEMF_U/IU(1)	P11.0	Motor 1 BEMF U or Current U sense
10	P8_1_VBEMF_U/IU(2)	P8.1	Motor 2 BEMF U or Current U sense
11	P11_1_VBEMF_V/IV(1)	P11.1	Motor 1 BEMF V or Current V sense
12	P10_6_VBEMF_V/IV(2)	P10.6	Motor 2 BEMF V or Current V sense
13	P11_2_VBEMF_W/IW(1)	P11.2	Motor 1 BEMF W or Current W sense
14	P17_4_VBEMF_W/IW(2)	P17.4	Motor 2 BEMF W or Current W sense
15	P8_3_IAVG/IDCLink	P8_3	Motor 1 DC link shunt current
16	P10_5_IAVG/IDCLink	P10_5	Motor 2 DC link shunt current
17	P7_1_U2_L	P7.1	Motor 2 PWM UL
18	P6_1_U1_L	P6.1	Motor 1 PWM UL
19	P7_0_U2_H	P7.0	Motor 2 PWM UH
20	P6_0_U1_H	P6.0	Motor 1 PWM UH
21	P7_3_V2_L	P7.3	Motor 2 PWM VL
22	P6_3_V1_L	P6.3	Motor 1 PWM VL
23	P7_2_V2_H	P7.2	Motor 2 PWM VH
24	P6_2_V1_H	P6.2	Motor 1 PWM VH
25	P7_5_W2_L	P7.5	Motor 2 PWM WL
26	P6_5_W1_L	P6.5	Motor 1 PWM WL
27	P7_4_W2_H	P7.4	Motor 2 PWM WH
28	P6_4_W1_H	P6.4	Motor 1 PWM WH
29	P1_3_CTRAP2	P1.3	Motor 2 kill feedback
30	P1_2_CTRAP1	P1.2	Motor 1 kill feedback
31	P8_0_ENPOW2	P8.0	Motor 2 power stage enable
32	P4_4_ENPOW1	P4.4	Motor 1 power stage enable

3 Hardware

mikroBUS header (X18): The mikroBUS header provides a standardized interface for connecting compatible Click boards, which can expand the kit's functionality with sensors, actuators, communication modules, and more. Note that some interfaces may require rework, as the same pins are used for multiple functionalities.

Table 3 **mikroBUS header pinout details**

Pin	Signal name	Connected to signal	XMC7200 MCU pin	Rework required
1	AN	ADC(2)_29	P20.0	Y
2	RST	SCB_RTS	P20.5	Y
3	CS	SCB5_SEL0	P4.3	
4	SCK	SCB5_CLK	P4.2	
5	MISO	SCB5_MISO	P4.0	
6	MOSI	SCB5_MOSI	P4.1	
7	+3.3 V	VDD3.3	VDDD	
8	GND	GND	EPAD	
9	GND	GND	EPAD	
10	+5 V	VDD5	-	
11	SDA	P10_1_Extra2	P10.1	
12	SCL	P10_2_Extra3	P10.2	
13	TX	SCB0_TX	P0_1	
14	RX	SCB0_RX	P0_0	
15	INT	SCB/TRIG/ PWM_P2_5	P0.0	
16	PWM	P2_3_PWM	P0.1	

Note: *mikroBus header pin 1 AN input is also connected to POT1. Remove R55 to use this pin for external analog input. RST pin(2) is not connected to MCU XRES_L so mikroBus based click boards cannot Reset XMC7200 MCU.*

3 Hardware

3.6 100-pin HD connector interface

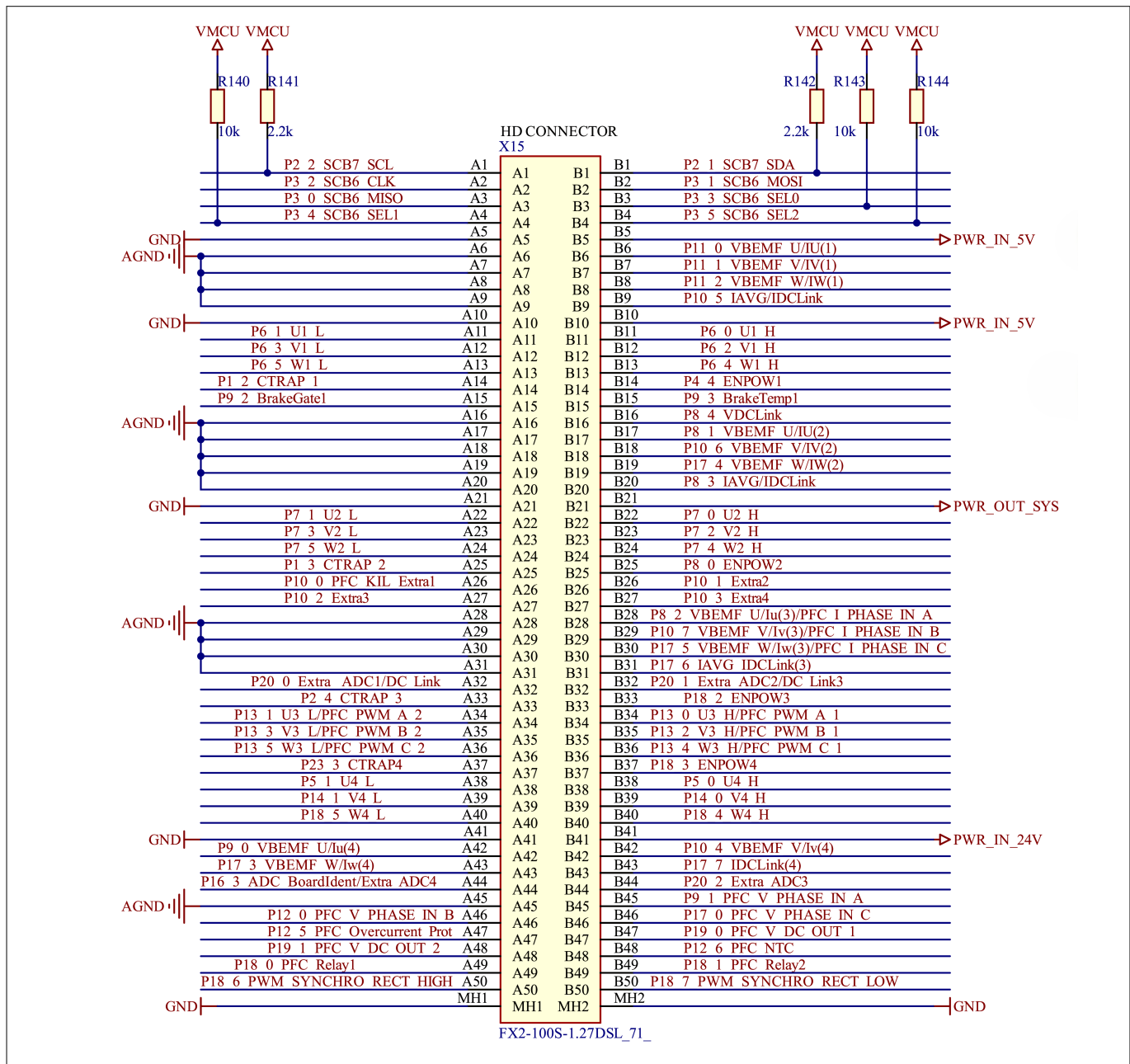


Figure 19 100-pin HD connector

The 100-pin high-density connector interfaces with the drive adapter card, facilitating connectivity for MADK motor power stages. It supports single, dual, and triple motors, as well as an optional power factor correction (PFC) control or a fourth motor.

Table 4 X15 HD connector peripheral details

X15 HD pin	XMC7200 pin	Peripherals	X15 HD pin	XMC7200 pin	Peripherals
A1	P2.2	SCB7 SCL	B1	P2.1	SCB7 SDA
A2	P3.2	SCB6 CLK	B2	P3.1	SCB6 MOSI
A3	P3.0	SCB6 MISO	B3	P3.3	SCB6 SEL0

(table continues...)

3 Hardware

Table 4 (continued) X15 HD connector peripheral details

X15 HD pin	XMC7200 pin	Peripherals	X15 HD pin	XMC7200 pin	Peripherals
A4	P3.4	SCB6 SEL1	B4	P3.5	SCB6 SEL2
A5	GND	Ground	B5	PWR_IN_5V	5 V Input from power board
A6	AGND	Analog ground	B6	P11.0	VBEMFU/IU(1)
A7	AGND	Analog ground	B7	P11.1	VBEMFV/IV(1)
A8	AGND	Analog ground	B8	P11.2	VBEMFW/IW(1)
A9	AGND	Analog ground	B9	P10.5	IAVG/IDCLink(1)
A10	GND	Ground	B10	PWR_IN_5V	5 V Input from power board
A11	P6.1	U1L	B11	P6.0	U1H
A12	P6.3	V1L	B12	P6.2	V1H
A13	P6.5	W1L	B13	P6.4	W1H
A14	P1.2	CTRAP_1	B14	P4.4	ENPOW1
A15	P9.2	BrakeGate1	B15	P9.3	BrakeTemp1
A16	AGND	Analog ground	B16	P8_4	VDCLink
A17	AGND	Analog ground	B17	P8.1	VBEMFU/IU(2)
A18	AGND	Analog ground	B18	P10.6	VBEMFV/IV(2)
A19	AGND	Analog ground	B19	P17.4	VBEMFW/IW(2)
A20	AGND	Analog ground	B20	P8.3	IAVG/IDCLink(2)
A21	GND	Ground	B21	PWR_OUT_SYS	3.3 V output from control board
A22	P7.1	U2L	B22	P7.0	U2H
A23	P7.3	V2L	B23	P7.2	V2H
A24	P7.5	W2L	B24	P7.4	W2H
A25	P1.3	CTRAP2	B25	P8.0	ENPOW2
A26	P10.0	PFC KIL Extra1	B26	P10.1	Extra2 digital GPIO
A27	P10.2	Extra3 Digital GPIO	B27	P10.3	Extra4 digital GPIO
A28	AGND	Analog ground	B28	P8.2	VBEMFU/IU(3)/PFC I PHASE IN A
A29	AGND	Analog ground	B29	P10.7	VBEMFV/IV(3)/PFC I PHASE IN B

(table continues...)

3 Hardware

Table 4 (continued) X15 HD connector peripheral details

X15 HD pin	XMC7200 pin	Peripherals	X15 HD pin	XMC7200 pin	Peripherals
A30	AGND	Analog ground	B30	P17.5	VBEMFW/ IW(3)/PFC I PHASE IN C
A31	AGND	Analog ground	B31	P17.6	IAVG/IDCLink(3)
A32	P20.0	Extra ADC1/DC LINK	B32	P20.1	Extra ADC2/DC LINK3
A33	P2.4	CTRAP3	B33	P18.2	ENPOW3
A34	P13.1	U3L/ PFC_PWM_A_2	B34	P13.0	U3H/ PFC_PWM_A_1
A35	P13.3	V3L/ PFC_PWM_B_2	B35	P13.2	V3H/ PFC_PWM_B_1
A36	P13.5	W3L/ PFC_PWM_C_2	B36	P13.4	W3H/ PFC_PWM_C_1
A37	P23.3	CTRAP4	B37	P18.3	ENPOW4
A38	P5.1	U4L	B38	P5.0	U4H
A39	P14.1	V4L	B39	P14.0	V4H
A40	P18.5	W4L	B40	P18.4	W4H
A41	GND	Ground	B41	PWR_IN_24V	24 V supply input from power board
A42	P9.0	VBEMFU/IU(4)	B42	P10.4	VBEMFV/IV(4)
A43	P17.3	VBEMFW/IW(4)	B43	P17.7	IDCLINK(4)
A44	P16.3	ADC BoardIdent/ EXTRA ADC4	B44	P20.2	EXTRA ADC3
A45	AGND	Analog ground	B45	P9.1	PFC V PHASE IN A
A46	P12.0	PFC V PHASE IN B	B46	P17.0	PFC V PHASE IN C
A47	P12.5	PFC_Overcurrent _Prot	B47	P19.0	PFC V DC OUT 1
A48	P19.1	PFC V DC OUT 2	B48	12.6	PFC NTC
A49	P18.0	PFC_Relay1	B49	P18.1	PRC_Relay2
A50	P18.6	PWM SYNCHRO RECT HIGH	B50	P18.7	PWM SYNCHRO RECT LOW

3 Hardware

3.7 ADC input buffers

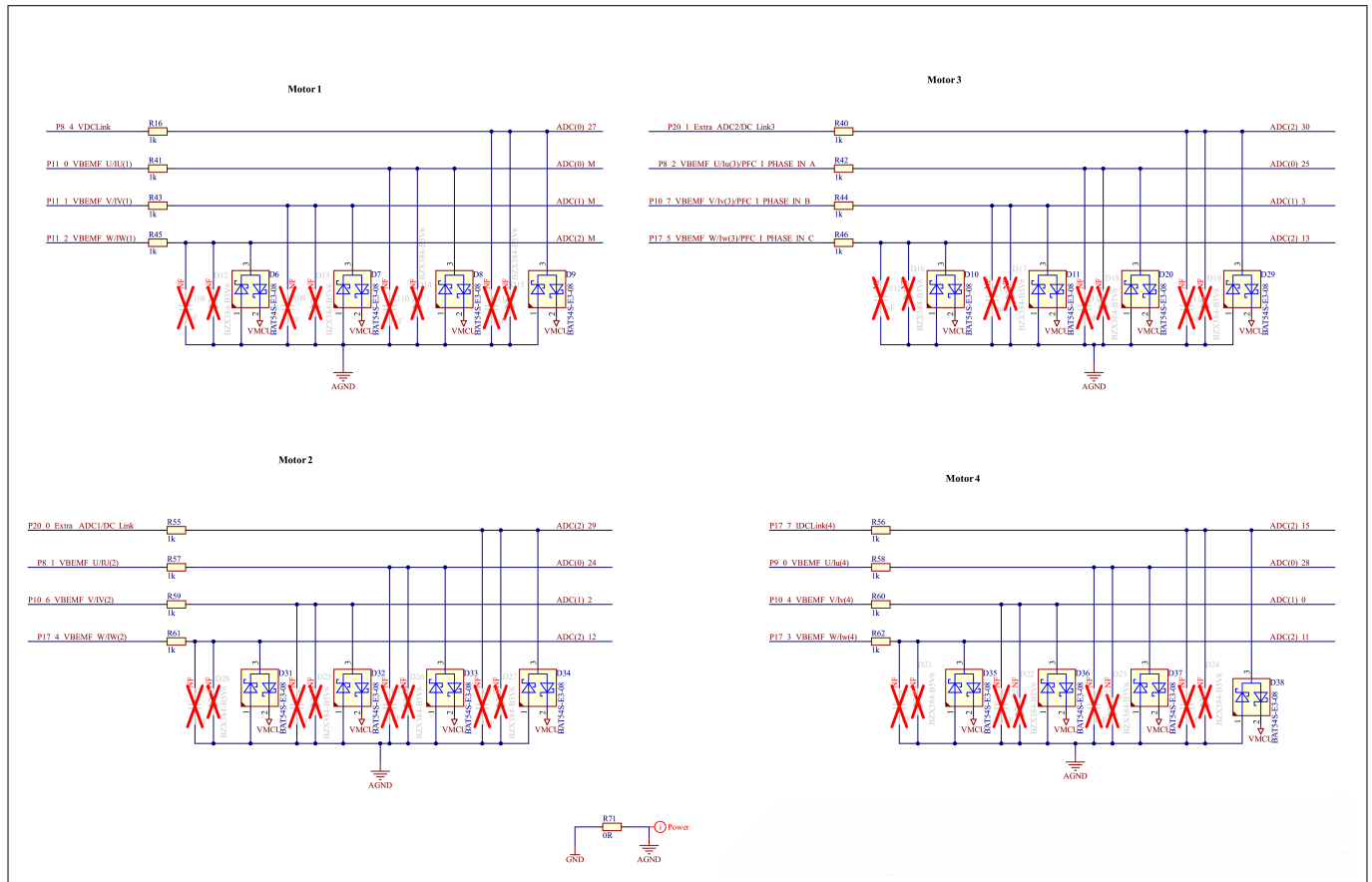


Figure 20 **ADC signal input buffers and scaling circuit**

The analog signals from power stages, such as phase currents, back electromotive force (BEMF) voltages, DC link current, and bus voltage, are protected by a circuit that includes a Schottky diode. This protection circuit is designed to prevent damage to the MCU analog pins. The analog pins of the MCU can sense ADC signals from the power board within the range of 0 to 5 V.

3 Hardware

3.8 Reset and user buttons

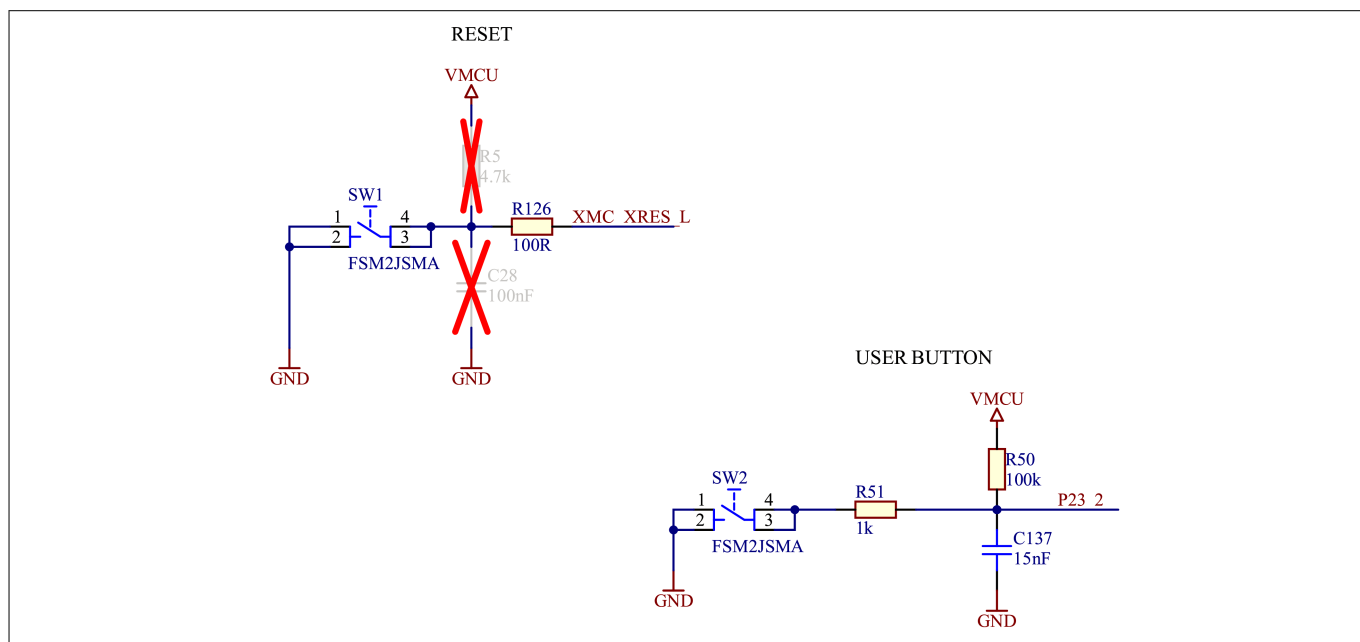


Figure 21 Reset and user buttons

The board is equipped with a reset button (SW1) connected to the XMC7200 MCU XRES_L pin. Additionally, it includes a user button (SW2) that can be utilized to alter the motor's direction of rotation or for other user-defined operations.

Table 5 Reset and user button connection details

Designator	Name	Connected to signal	XMC7200 pin
SW1	RESET	XRES_L	XRES_L
SW2	USER BUTTON	User_switch	P23.2

3.9 Potentiometers and user LEDs

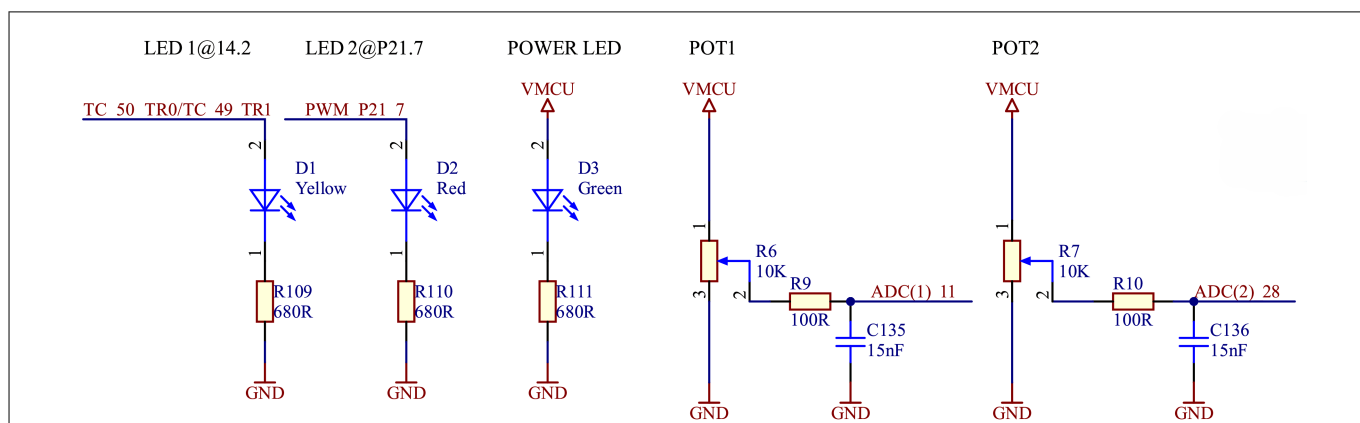


Figure 22 Potentiometers and user LEDs

The board features two potentiometers connected to the ADC inputs, allowing for precise control of the motor's speed. Furthermore, two user LEDs (D1 and D2) can be controlled using the MCU GPIOs. When a current of 3.3 V or 5.0 V is supplied through the VMCU power line, the green power LED (D3) switches on.

3 Hardware

Table 6 Potentiometer and user LED connection details

Designator	Name	Connected to signal	XMC7200 pin
POT1	Potentiometer 1	ADC(1)_11	P12.7
POT2	Potentiometer 2	ADC(2)_28	P19.4
D1	User LED1	TC_50_TR0/TC_49_TR1(X17)	P14.2
D2	User LED2	PWM_P21_7(X16)	P21.7

3.10 Digital isolators and CAN interface

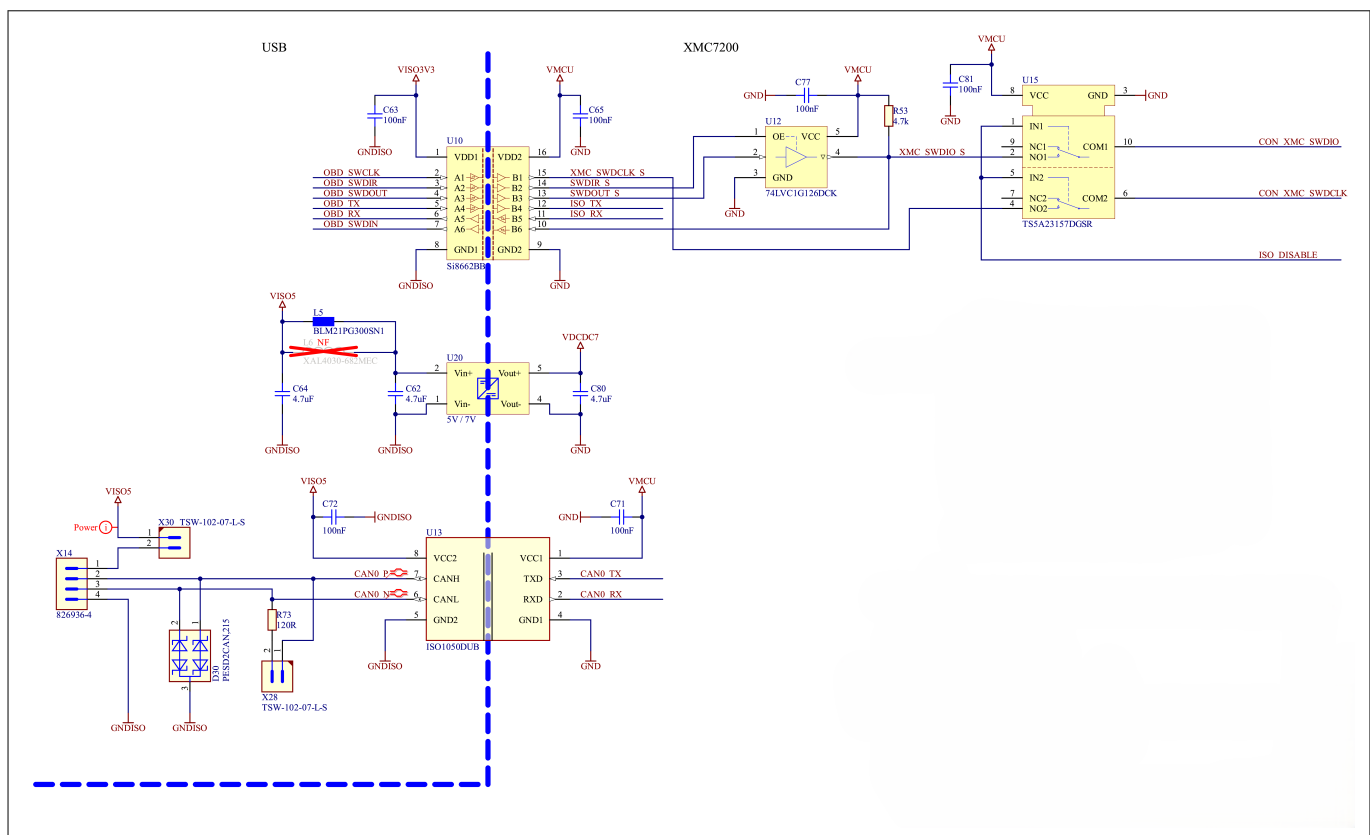


Figure 23 Digital isolators and CAN interface

Isolation for the SWD and UART lines is achieved using a digital isolator (U10). The CAN signal uses a dedicated isolator (U13), and the USB power supply is isolated from the target side using an isolated DC-DC converter (U20). An isolated CAN interface is available on the X14 header. Additionally, by mounting the X28 jumper, a 120 Ω termination resistor can be enabled on the CAN_P and CAN_N lines.

Table 7 CAN header (X14) pinout details

Pin	Signal name	XMC7200 Pin	Description
1	VISO5	-	+5 V supply
2	CAN0_P	CAN0_TX (P23.0)	CAN0_TX signal from the MCU
3	CAN0_N	CAN0_RX (P23.1)	CAN0_RX signal to the MCU

(table continues...)

3 Hardware

Table 7 (continued) CAN header (X14) pinout details

Pin	Signal name	XMC7200 Pin	Description
4	GND	GND	Power

3.11 XMC7200 MCU clock architecture

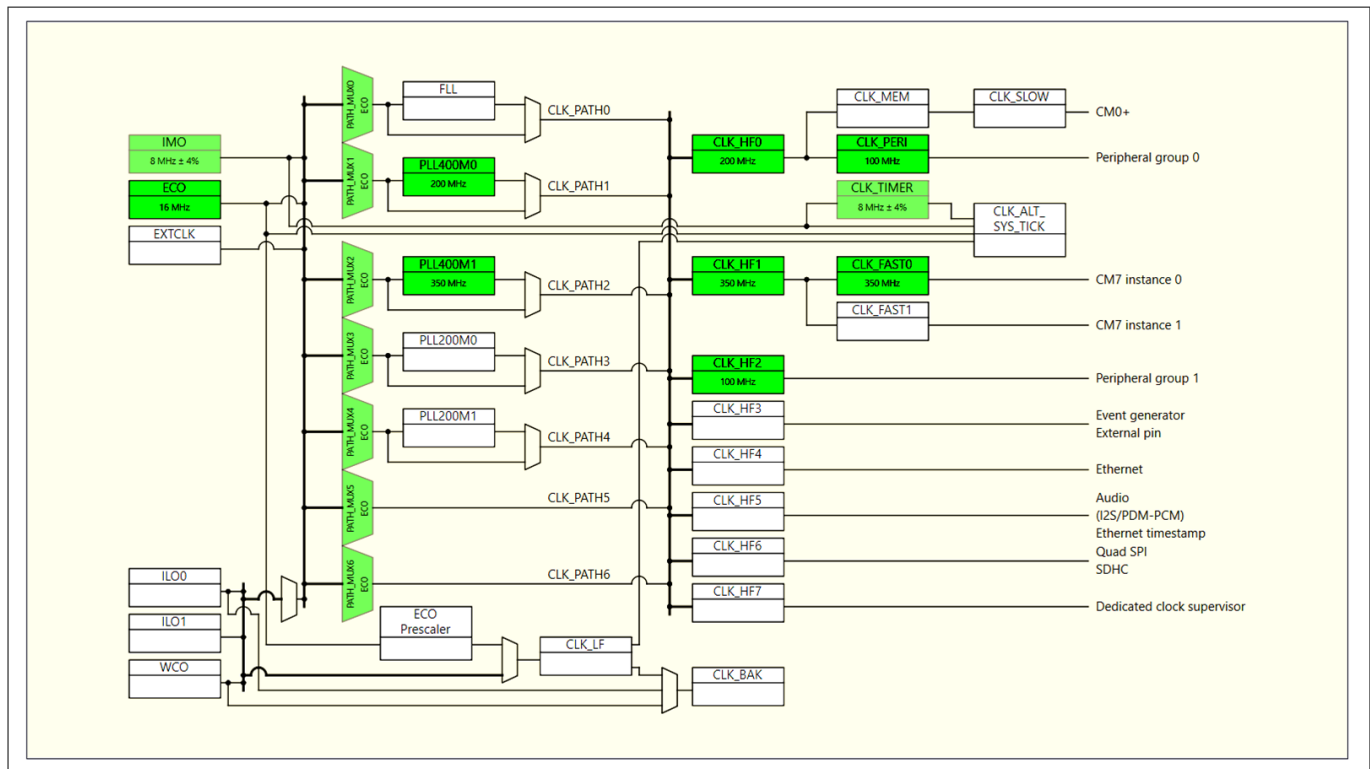


Figure 24 XMC7200 MCU clock architecture

Figure 24 shows the MCU clocking scheme. A 16 MHz external clock oscillator (ECO) serves as the source for PLL400M0 and PLL400M1. PLL400M0 is configured to 200 MHz and supplies the clock to CLK_HF0 and CLK_HF2 via CLK_PATH1. Peripheral Group 0 is configured to 100 MHz using CLK_HF0, while Peripheral Group 1 is configured to 100 MHz via CLK_HF2. The TCPWM and ADC utilize the Peripheral clock from Group 1, running at 100 MHz. PLL400M1 is configured to 350 MHz and supplies the clock to CLK_HF1 via CLK_PATH2. The CPU core CM7_0 operates at 350 MHz using CLK_FAST0.

3 Hardware

3.12 XMC7200 MCU external programming/debugging headers

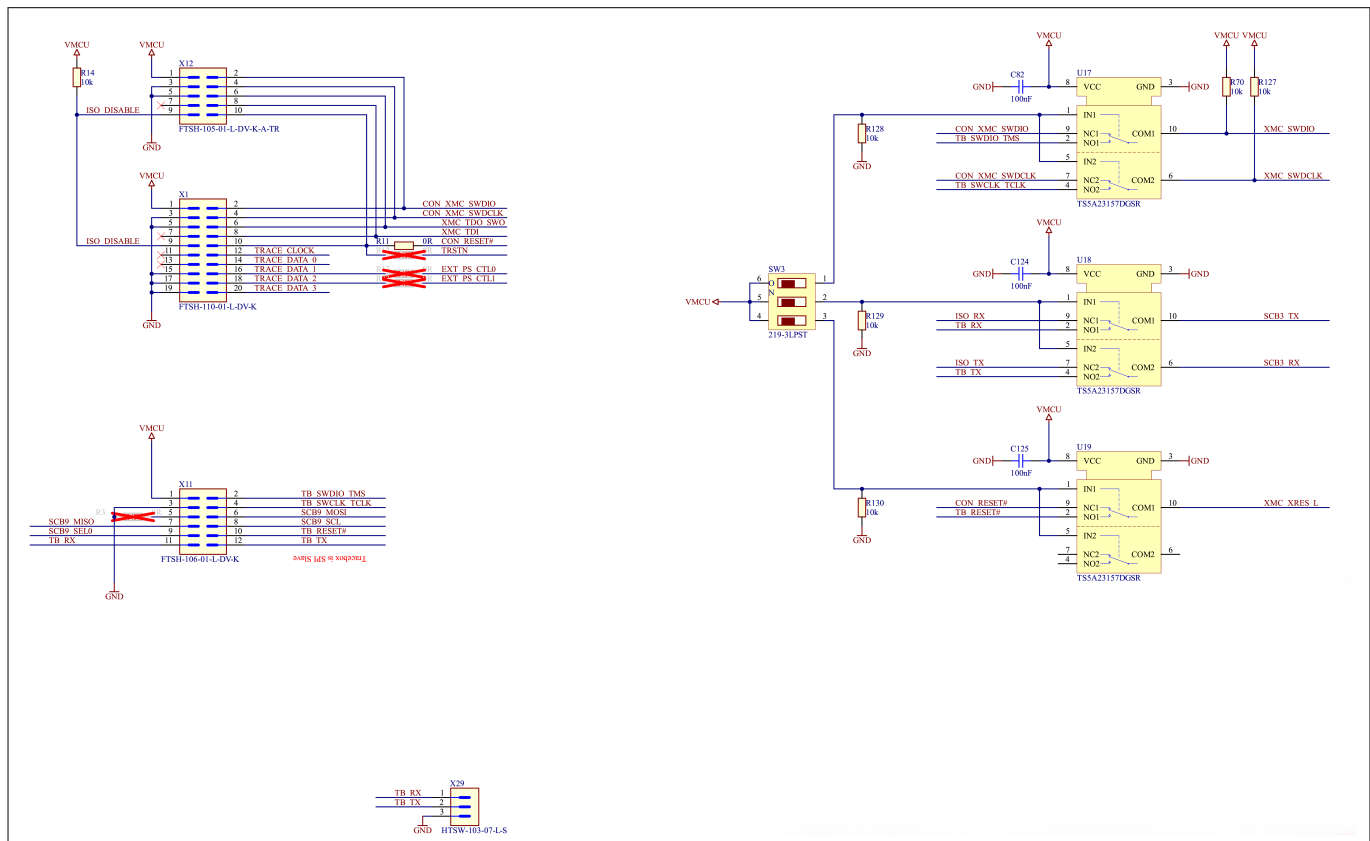


Figure 25 External debugger connections

The board features a 10-pin Cortex® header (X12) and a 20-pin ETM Trace header (X1). Additionally, it features a proprietary 12-pin header with SWD, UART, and SPI interfaces (X11). All headers have a 1.27 mm pitch.

The selection between the onboard debugger or the Cortex® 10-pin header (X12) and the proprietary 12-pin header (X11) is managed using SW3 DIP switches.

SW3 DIP switches should be in the default position where all switches are towards 1,2,3 for using an external debugger on X1 or X12 headers. The Low ISO DISABLE signal coming from the external debugger on pin 9 of the X12 or X1 headers will automatically disconnect the onboard debugger.

Note: The external debugger or serial interface is not isolated.

3 Hardware

3.13 XMC4200 as an onboard programmer/debugger

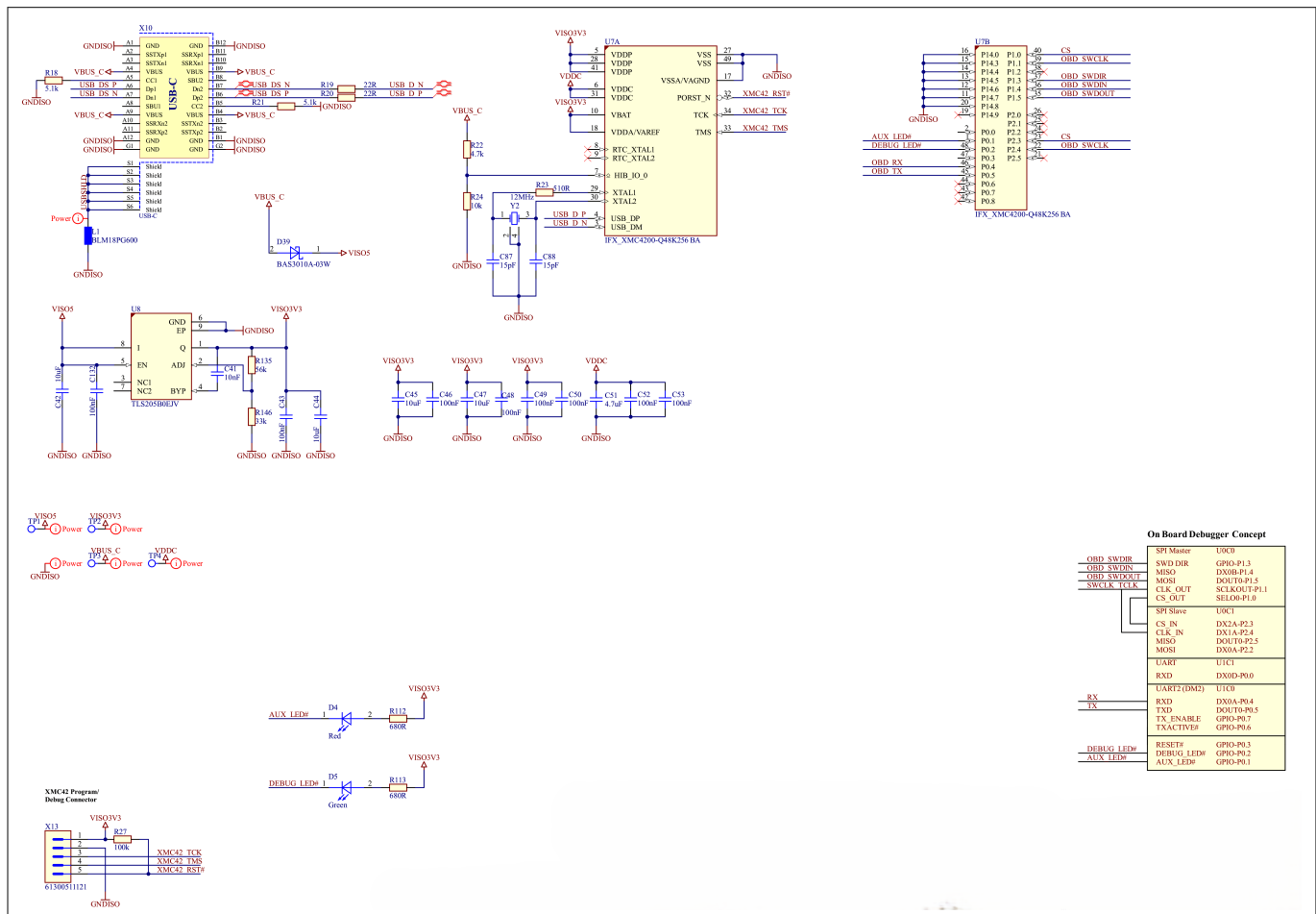


Figure 26 XMC4200-based J-Link lite programmer/debugger

The onboard J-Link LITE programmer or debugger based on XMC4200 (U7) provides the SWD interface as well as a UART interface over USB for the target MCU. The XMC4200 MCU is powered using a 5 V USB supply converted to 3.3 V using the (U8) voltage regulator. The Debug LED (D5) switches on when the USB interface is connected to the PC. Additionally, the Aux LED (D4) blinks during active communication between the debugger and the target MCU. Test points TP1, TP2, TP3, and TP4 can be used to measure the different power rail voltages. X13 is a factory programming header for the XMC4200 MCU that hosts the J-link firmware to enable the J-link interface with the XMC7200 MCU.

3 Hardware

3.14 Hall sensor and encoder interface

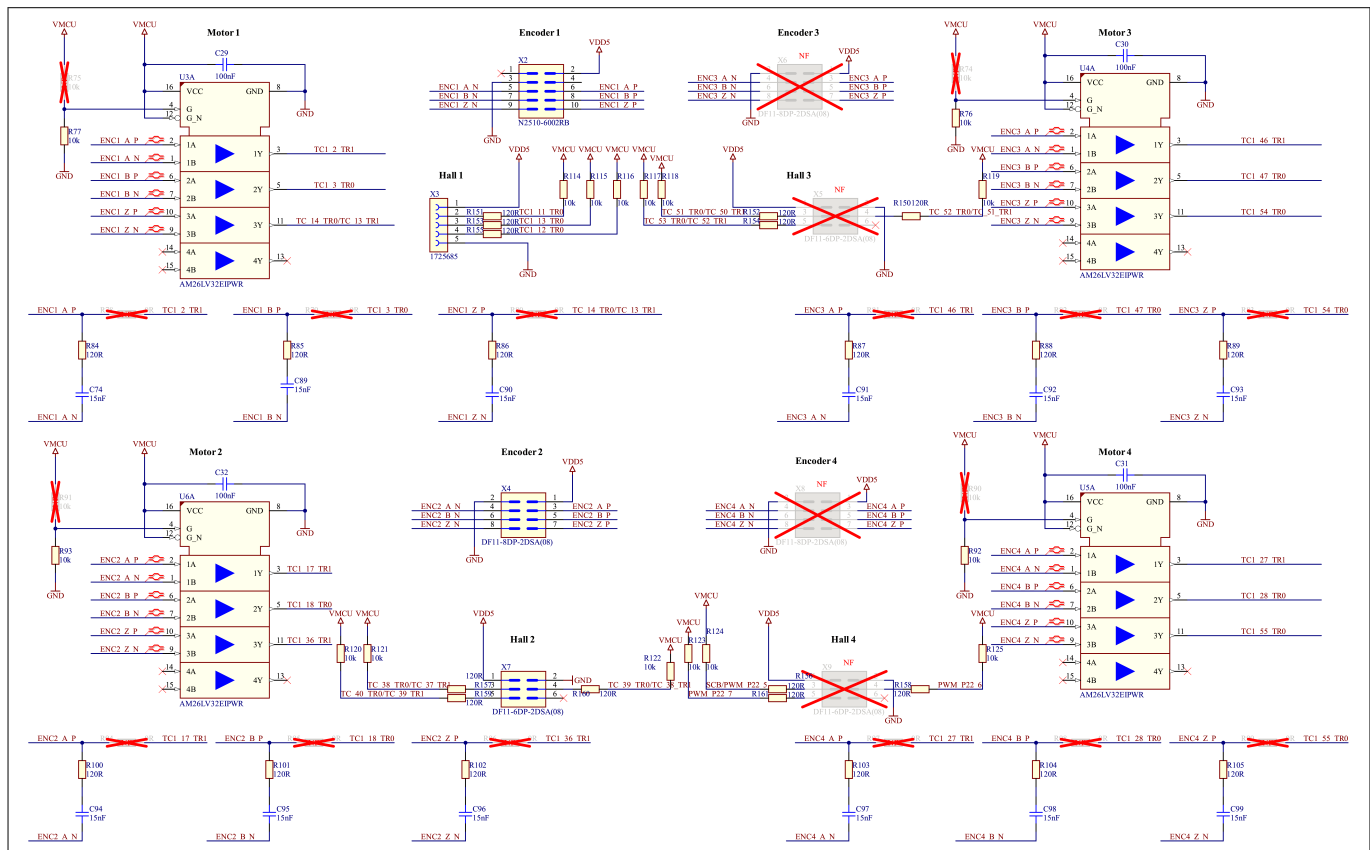


Figure 27 Hall sensor and encoder interface

The Hall sensor (X3, X7, X5, and X9) and encoder interface (X2, X4, X6, and X8) allow users to connect motors with Hall sensors or incremental encoders for sensor-based motor control applications. The board supports both differential as well as single-ended ABZ encoders. When using single-ended encoders, the input signal is connected to ENCx_A_P, ENCx_B_P, and ENCx_Z_P pins of X2, X4, X6, and X8 connectors, while the corresponding N lines are connected to GND.

Note: For Motor 3 and Motor 4 headers, the Encoder and Hall sensors are not mounted as default on the board.

Table 8 Hall 1 (X3) pinout details

Pin	XMC7200 pin	Description
1	-	+5 V supply VDD5
2	P5.2	Hall 1 input for motor 1
3	P5.4	Hall 2 input for motor 1
4	P5.3	Hall 3 input for motor 1
5	GND	Ground

3 Hardware

Table 9 Hall 2 (X7) pinout details

Pin	XMC7200 pin	Description
1	-	+5 V supply VDD5
2	GND	Ground
3	P12.2	Hall 1 input for motor 2
4	P12.3	Hall 2 input for motor 2
5	P12.4	Hall 3 input for motor 2
6	-	-

Table 10 Hall 3 (X5 - not mounted) pinout details

Pin	XMC7200 pin	Description
1	-	+5 V supply VDD5
2	GND	Ground
3	P14.3	Hall 1 input for motor 3
4	P14.4	Hall 2 input for motor 3
5	P14.5	Hall 3 input for motor 3
6	-	-

Table 11 Hall 4 (X9 - not mounted) pinout details

Pin	XMC7200 pin	Description
1	-	+5 V supply VDD5
2	GND	Ground
3	P22.5	Hall 1 input for motor 4
4	P22.6	Hall 2 input for motor 4
5	P22.7	Hall 3 input for motor 4
6	-	-

Table 12 Encoder 1 (X2) pinout details

Pin	XMC7200 pin	Description
1	-	-
2	-	+5 V supply VDD5
3	GND	Ground
4	-	-
5	-	ENC1_A_N for motor 1
6	P6.6	ENC1_A_P for motor 1
7	-	ENC1_B_N for motor 1
8	P6.7	ENC1_B_P for motor 1

(table continues...)

3 Hardware

Table 12 (continued) Encoder 1 (X2) pinout details

Pin	XMC7200 pin	Description
9	-	ENC1_Z_N for motor 1
10	P5.5	ENC1_Z_P for motor 1

Table 13 Encoder 2 (X4) pinout details

Pin	XMC7200 pin	Description
1	-	+5 V supply VDD5
2	GND	Ground
3	P7.6	ENC2_A_P for motor 2
4	-	ENC2_A_N for motor 2
5	P7.7	ENC2_B_P for motor 2
6	-	ENC2_B_N for motor 2
7	P12.1	ENC2_Z_P for motor 2
8	-	ENC2_Z_N for motor 2

Table 14 Encoder 3 (X6 - not mounted) pinout details

Pin	XMC7200 pin	Description
1	-	+5 V supply VDD5
2	GND	Ground
3	P13.6	ENC3_A_P for motor 3
4	-	ENC3_A_N for motor 3
5	P13.7	ENC3_B_P for motor 3
6	-	ENC3_B_N for motor 3
7	P14.6	ENC3_Z_P for motor 3
8	-	ENC3_Z_N for motor 3

Table 15 Encoder 4 (X8 - not mounted) pinout details

Pin	XMC7200 pin	Description
1	-	+5 V supply VDD5
2	GND	Ground
3	P19.2	ENC4_A_P for motor 4
4	-	ENC4_A_N for motor 4
5	P19.3	ENC4_B_P for motor 4
6	-	ENC4_B_N for motor 4
7	P14.7	ENC4_Z_P for motor 4
8	-	ENC4_Z_N for motor 4

3 Hardware

3.15 Drive adapter card

The drive adapter card provides the following interfaces:

- 100-pin HD connector for the control card
- 2x M1/M3 connectors for compatible MADK power boards
- 1x M5 connector for compatible MADK power boards
- 2x Samtec connectors for compatible power boards
- Expansion header interface with standard 2.54 mm pitch

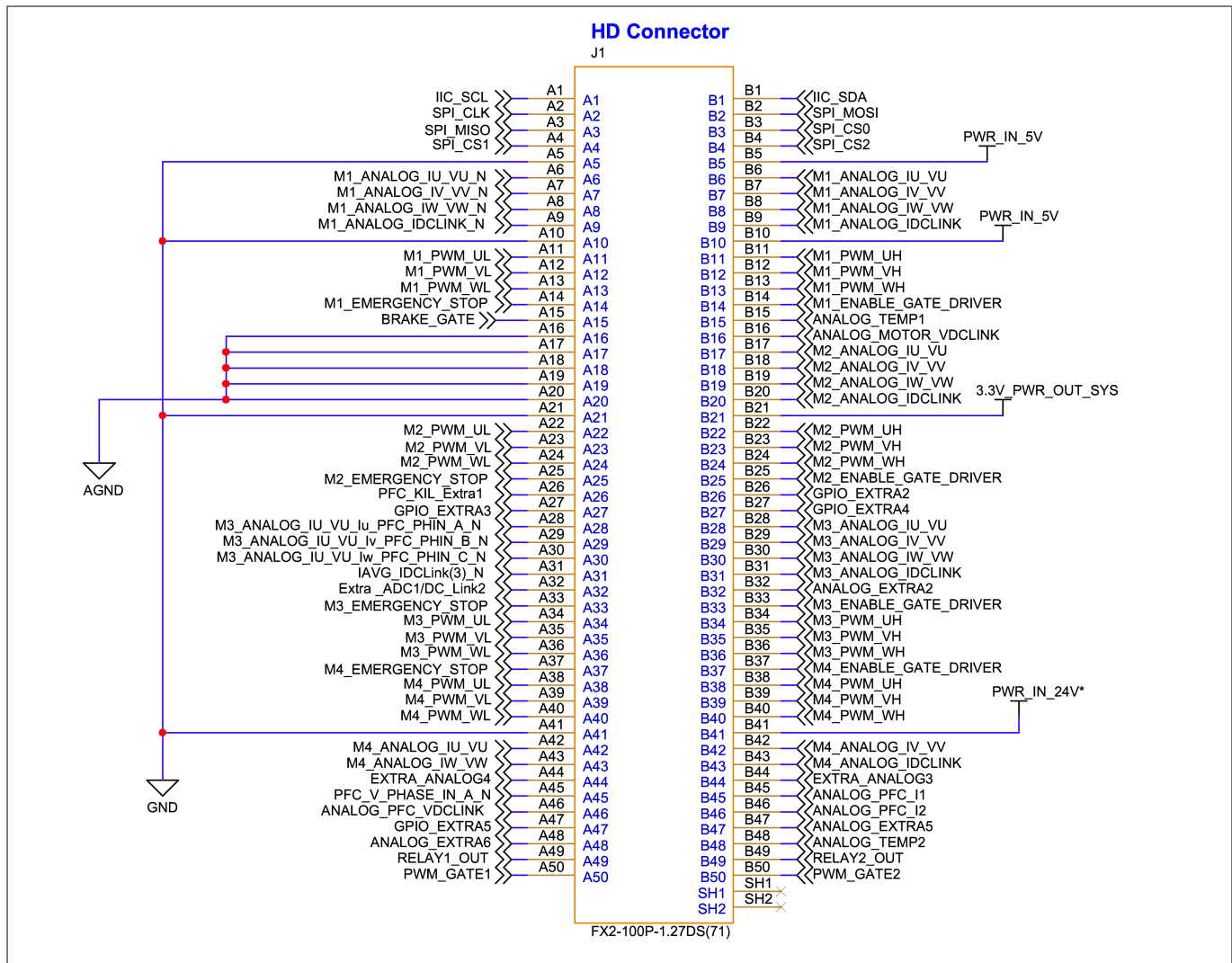


Figure 28 Drive adapter card 100-pin HD connector

3 Hardware

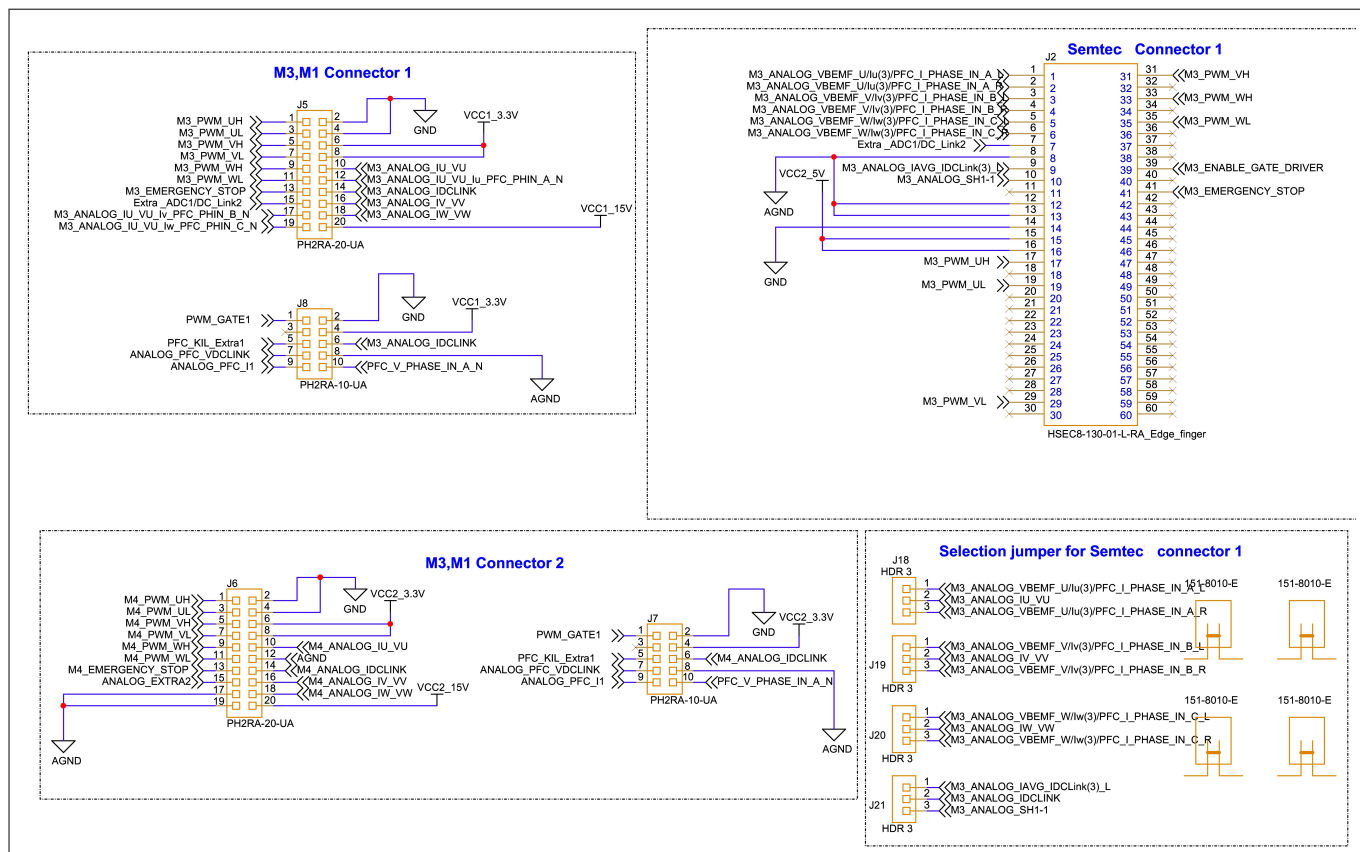


Figure 29 M3, M1 connectors, and Samtec connector 1

3 Hardware

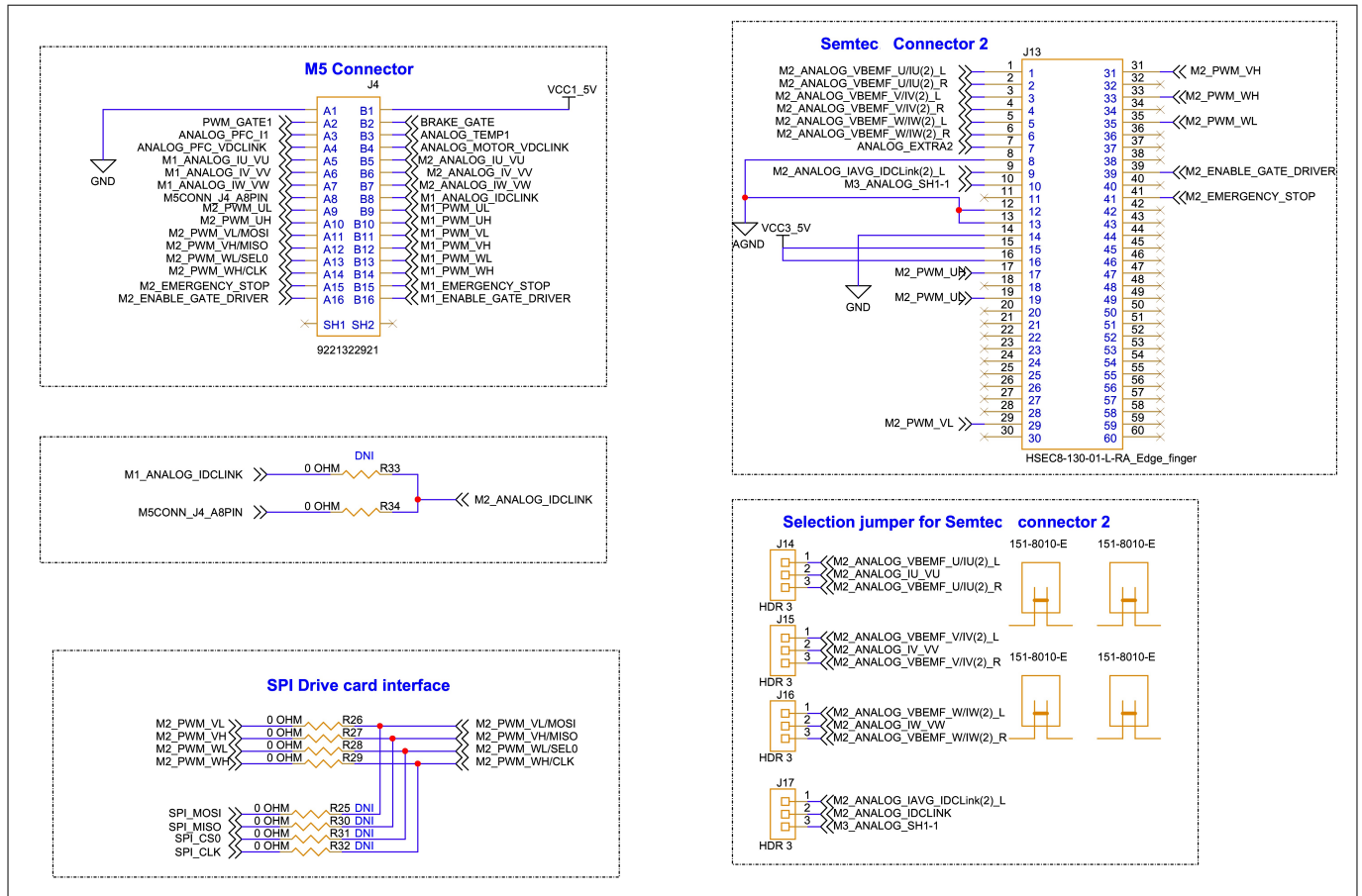


Figure 30 M5 connector and Samtec connector 2

3 Hardware

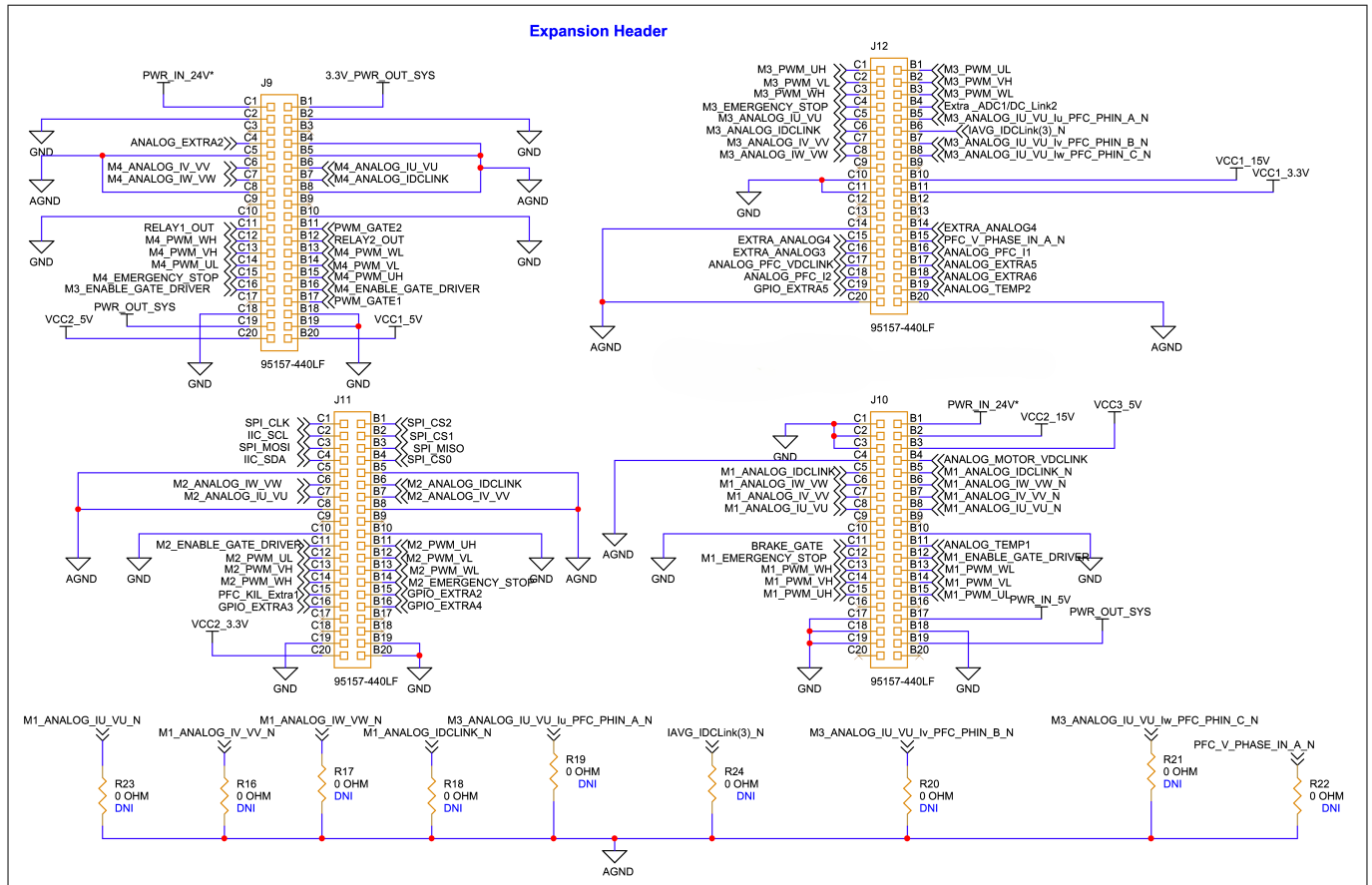


Figure 31 Drive adapter card expansion headers

3 Hardware

3.16 KIT_MOTOR_DC_250W_24V power board

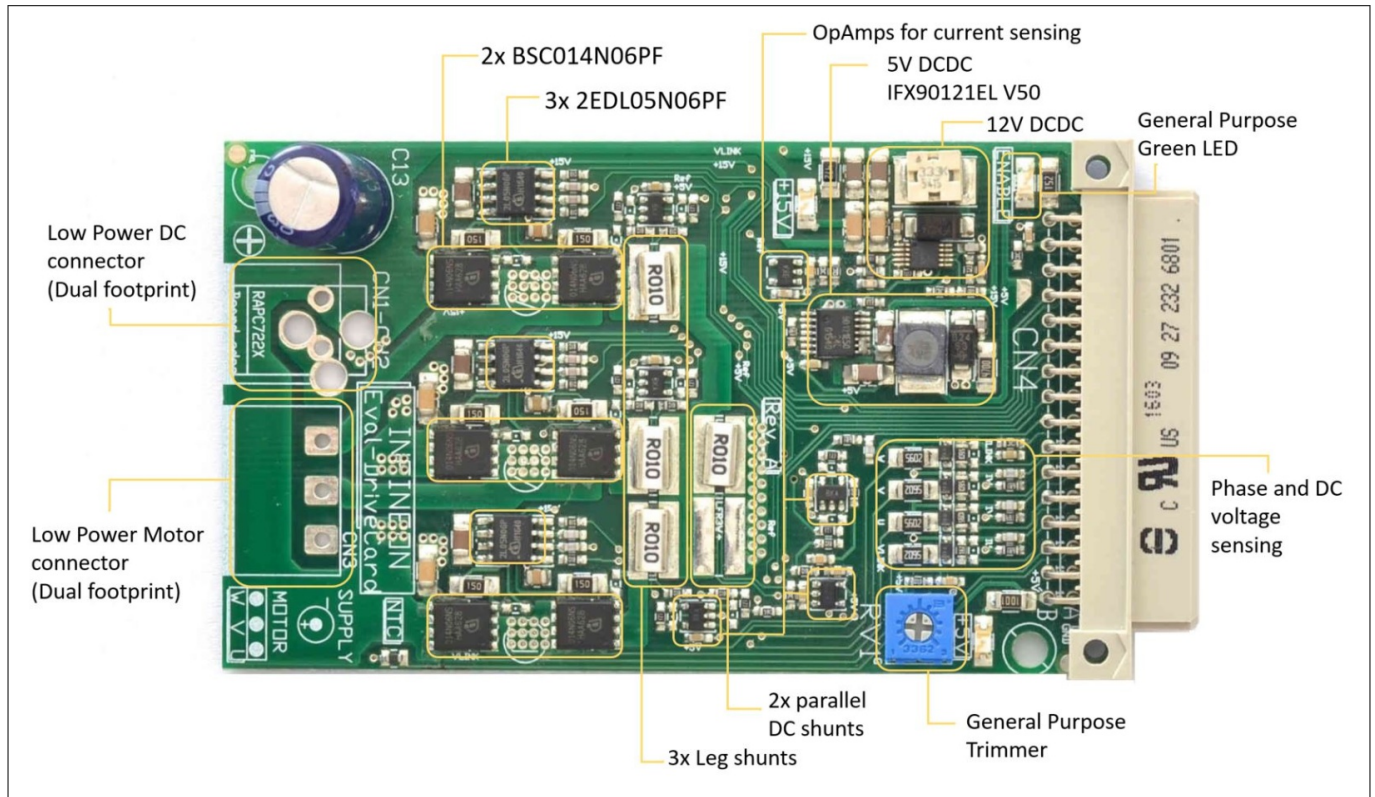


Figure 32 KIT_MOTOR_DC_250W_24V details

The KIT_MOTOR_DC_250W_24V features an MADK M5 interface, enabling it to drive a 24 V BLDC motor in three shunt or single shunt field-oriented control, as well as trapezoidal block commutation mode. For complete information about this kit, including schematics, and design files, see [KIT_MOTOR_DC_250W_24V](#).

Table 16 Important board parameters when used with KIT_XMC7200_DC_V1 motor control card

Parameter	Value
Zero current offset voltage	2.5 V
Shunt value	0.01 Ω
Overall current gain	12
Max measurable current	20.83 A
I_{TRIP} (Fault output trigger threshold)	25 A
Bus voltage attenuation factor	0.0909
Max measurable bus voltage	55 V
BEMF attenuation factor	0.0909

4 Production data

4 Production data

The KIT_XMC7200_DC_V1 control board is designed with Altium, while the drive adapter card is designed in Orcad. The complete PCB design data, schematics, layout, and BOM for this board can be downloaded from the [kit webpage](#).



Revision history

Revision history

Document revision	Date	Description of changes
**	2024-11-06	Initial release

Trademarks

All referenced product or service names and trademarks are the property of their respective owners.

Edition 2024-11-06

Published by

Infineon Technologies AG
81726 Munich, Germany

© 2024 Infineon Technologies AG
All Rights Reserved.

Do you have a question about any aspect of this document?

Email: erratum@infineon.com

Document reference
IFX-lqq1727344884966

For further information on the product, technology, delivery terms and conditions and prices please contact your nearest Infineon Technologies office (www.infineon.com)

Warnings

Due to technical requirements products may contain dangerous substances. For information on the types in question please contact your nearest Infineon Technologies office.

Except as otherwise explicitly approved by Infineon Technologies in a written document signed by authorized representatives of Infineon Technologies, Infineon Technologies' products may not be used in any applications where a failure of the product or any consequences of the use thereof can reasonably be expected to result in personal injury.

Mouser Electronics

Authorized Distributor

Click to View Pricing, Inventory, Delivery & Lifecycle Information:

[Infineon:](#)

[KITXMC7200MC1TOBO1](#)