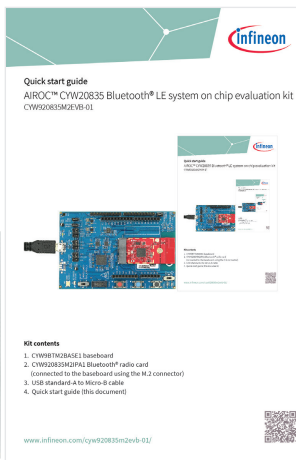
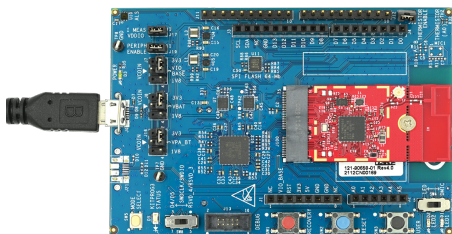


## Quick start guide

# AIROC™ CYW20835 Bluetooth® LE system on chip evaluation kit CYW920835M2EVB-01



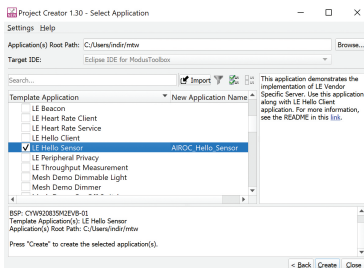
## Kit contents

1. CYW9BTM2BASE1 baseboard
2. CYW920835M2IPA1 Bluetooth® radio card  
(connected to the baseboard using the M.2 connector)
3. USB standard-A to Micro-B cable
4. Quick start guide (this document)



## Before you start

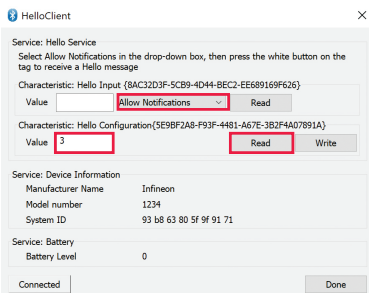
1. Register on the Developer Community and then download and install ModusToolbox™ software v2.4 (or later) with the Bluetooth® SDK at <https://www.infineon.com/modustoolbox>.
2. Your kit has the ‘Hello Sensor’ application pre-programmed. Do the following to install the ‘HelloClient’ peer application.
  - a. In Eclipse IDE for ModusToolbox™ software, select **File > New application**. This launches the project creator.
  - b. In the project creator, click **AIROC™ Bluetooth® BSPs**.
  - c. Select the ‘CYW920835M2EV01’ kit and click **Next**.
  - d. Under template applications, select **Bluetooth®** and select **LE Hello Sensor**.
  - e. Click **Create** and wait ~10 seconds for Project Creator to close.
3. Connect a USB cable between the PC and CYW920835M2EV01 (J6) to power the kit.



## ModusToolbox™ software

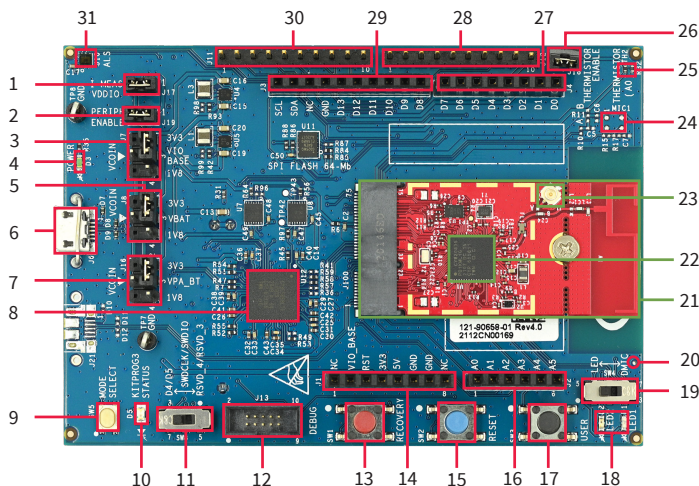
## Run the ‘HelloClient’ application

1. Locate the ‘HelloClient’ peer sample application on your PC that complements the ‘HelloSensor’ application at `... \mtw\mtb_shared\wiced_btsdk\tools\btsdk-peer-apps-ble\release-v<Version#>\hello_sensor\Windows\HelloClient\Release\x64`.
2. Run the HelloClient executable on your PC and select the ‘HelloSensor’ device, which appears as a device with the name ‘Hello’.
3. When prompted, allow pairing from the client to the Hello Sensor device.
4. In the HelloClient window, select **Allow Notifications** next to the **Hello Input** characteristic.
5. Press button **SW3** on the evaluation kit. Observe that the **Value** field shows the Hello 1 message.
6. Press SW3 again, and then click **Read**. Observe that the **Value** field for the **Hello Configuration** characteristic is incremented.



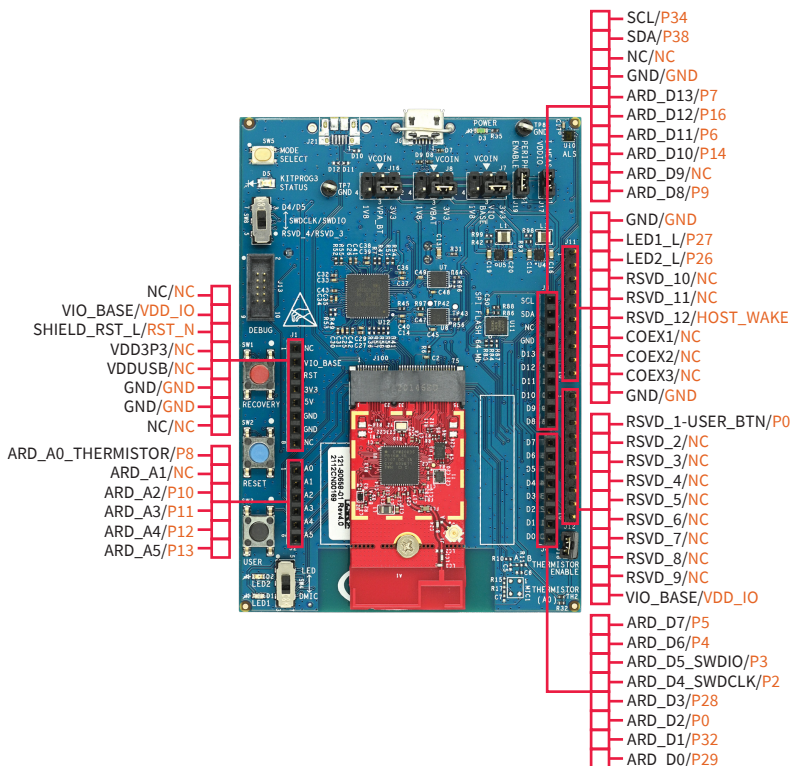
## HelloClient application

# AIROC™ CYW20835 evaluation kit board details



1. VDDIO current measurement jumper (J17)
2. Peripheral enable jumper (J19)
3. VDDIO select jumper (J7)
4. Baseboard power status LED (D3)
5. VBAT select jumper (J8)
6. USB connector for programming/USB-UART (J6)
7. VPA select jumper (J16)
8. KitProg3 based on PSoC™ 5LP MCU (U12)
9. KitProg3 mode select (SW5)
10. KitProg3 status LED (D5)
11. Debug interface select jumper (SW8)
12. Debug header (J13)
13. Recovery button (SW1)
14. Header compatible with Arduino (J1)
15. Reset button (SW2)
16. Header compatible with Arduino (J2)
17. User button (SW3)
18. User LEDs (D1, D2)
19. User LED/DMIC switch (SW4)
20. Digital mic sound port (J16)
21. CYW920835M2IPA1 Bluetooth® M.2 radio card
22. AIROC™ CYW20835 Bluetooth® LE system-on-chip (CYW920835M2IPA1.U1A)
23. External antenna connector (CYW920835M2IPA1.J1)
24. Analog mic footprint (MIC1)
25. Thermistor (TH2)
26. Thermistor enable jumper (J18)
27. Header compatible with Arduino (J4)
28. Bluetooth® I/O header (J12)
29. Header compatible with Arduino (J3)
30. Bluetooth® I/O header (J11)
31. Ambient light sensor (U10)

# AIROC™ CYW20835 evaluation kit board pinout details



Legend ■ Baseboard I/Os ■ CYW20835 I/Os

www.infineon.com

Published by  
Infineon Technologies AG  
81726 Munich, Germany

© 2022 Infineon Technologies AG.  
All Rights Reserved.

## Please note!

This Document is for information purposes only and any information given herein shall in no event be regarded as a warranty, guarantee or description of any functionality, conditions and/or quality of our products or any suitability for a particular purpose. With regard to the technical specifications of our products, we kindly ask you to refer to the relevant product data sheets provided by us. Our customers and their technical departments are required to evaluate the suitability of our products for the intended application.

We reserve the right to change this document and/or the information given herein at any time.

## Additional information

For further information on technologies, our products, the application of our products, delivery terms and conditions and/or prices, please contact your nearest Infineon Technologies office (www.infineon.com).

## Warnings

Due to technical requirements, our products may contain dangerous substances. For information on the types in question, please contact your nearest Infineon Technologies office.

Except as otherwise explicitly approved by us in a written document signed by authorized representatives of Infineon Technologies, our products may not be used in any life-endangering applications, including but not limited to medical, nuclear, military, life-critical or any other applications where a failure of the product or any consequences of the use thereof can result in personal injury.

# Mouser Electronics

Authorized Distributor

Click to View Pricing, Inventory, Delivery & Lifecycle Information:

[Infineon:](#)

[CYW920835M2EVB-01](#)