

Quick Setup Guide for Sensor Hub - Nano

with Infineon Barometric Pressure Sensor (V2.0)

EVAL SHNBV01 DPS310

EVAL SHNBV01 DPS422

EVAL SHNBV01 DPS368



Recommended software and hardware requirements



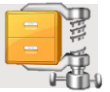
1 Machine with Windows OS (with security patch updates)



2 Sensor Evaluation Software GUI (via "Infineon Toolbox")



3 Zip/Unzip Software



4 Bluetooth - Connectivity



5 Micro USB Cable to charge the Nano-Hub



6 30MB of Free Space on HDD

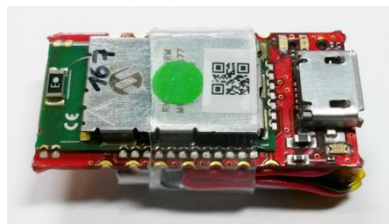
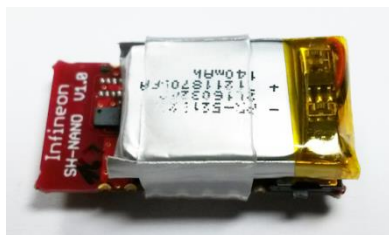


Quick Setup for Digital Pressure Sensor Demo

STEP1

Box Content

Programmed Sensor Hub
Nano with DPS310 /
DPS422 / DPS368



www.infineon.com/pressure_sensor

STEP2

Install Infineon Toolbox

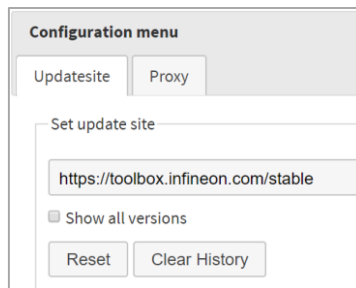
Detailed instruction and
download option:

www.infineon.com/toolbox

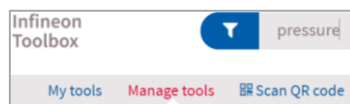
Set update site:

For Infineon internal:
"http://toolbox.intra.infineon.com/updatesite/stable"

For external customers:
"https://toolbox.infineon.com/stable"



Go to "manage tools" and download "Pressure Sensor Kit"



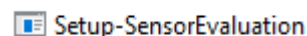
STEP3

Download GUI software

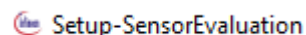
"SES2G Sensor Software
Analyzer" (or use pre-installed
software on Infineon Toolbox
platform)

Unzip and Install

Double Click on



this self-extracts the software
into a new folder, explore the
new folder and double click on



This will install the application
in Windows.

STEP4

Before Launching the GUI you must pair over Bluetooth

Launch Bluetooth Device Manager
in Windows

If IFX_NANOHUB is already paired
please remove it by clicking on
Remove device button

Otherwise make a new pairing of
IFX_NANOHUB by clicking on



Add Bluetooth or other device

Click on "Add a device"

- Bluetooth (mice, keyboard, pens, or other kind of Bluetooth devices)
- A list of found device(s) will be refreshed
- Select IFX_NANOHUB and connection will be established,

Restart your computer before
using the SES2G Sensor Software
Analyzer to ensure full
functionality

Receive board

Download "Infineon
Toolbox"

Download software
and install

Pair your device via
Bluetooth

Quick Setup for Digital Pressure Sensor Demo

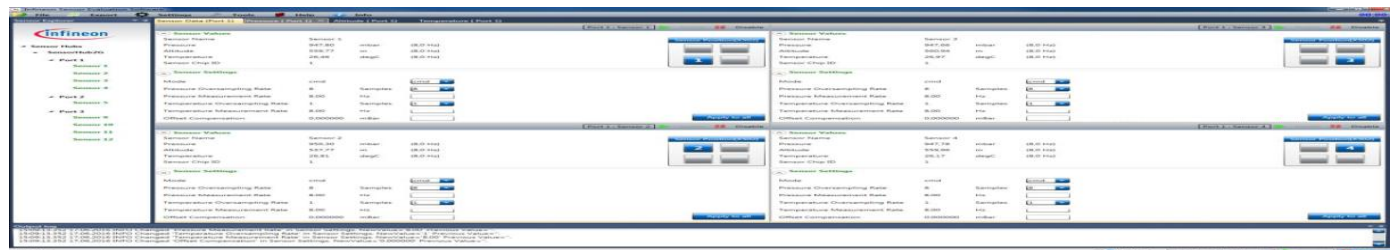
STEP 5

Launching the GUI

- Click and Run Sensor Evaluation Software 1.x.x (Windows → Infineon Technologies AG → Sensor Evaluation Software 1.x.x)
- Click on the Bluetooth icon on the bottom right (as indicated by the red arrow)



- Wait few seconds and device is found
- You are now ready to receive and to see sensor data



STEP 6

Enjoy the
DEMO

Run the GUI

Installation
Complete



Part of your life. Part of tomorrow.



Mouser Electronics

Authorized Distributor

Click to View Pricing, Inventory, Delivery & Lifecycle Information:

[Infineon:](#)

[EVALSHNBV01TOBO1](#) [EVALSHNBV01DPS422TOBO1](#) [EVALSHNBV01DPS310TOBO1](#)