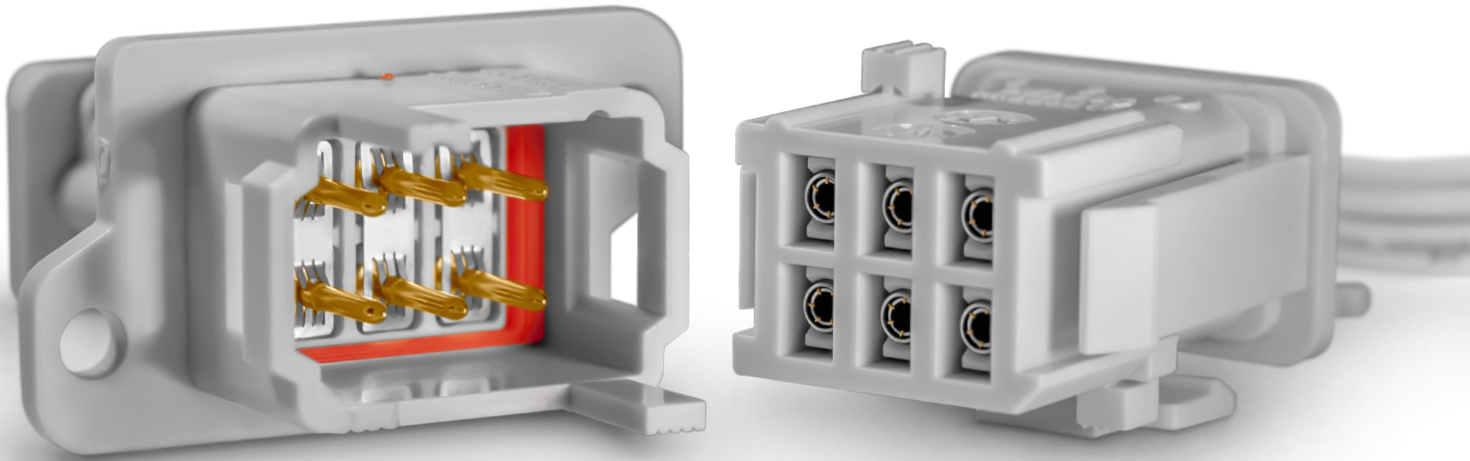


REP Series

Environmentally-Sealed Rectangular Plastic Connectors



Disclaimer 2022

All of the information included in this catalogue is believed to be accurate at the time of printing. It is recommended, however, that users should independently evaluate the suitability of each product for their intended application and be sure that each product is properly installed, used and maintained to achieve desired results.

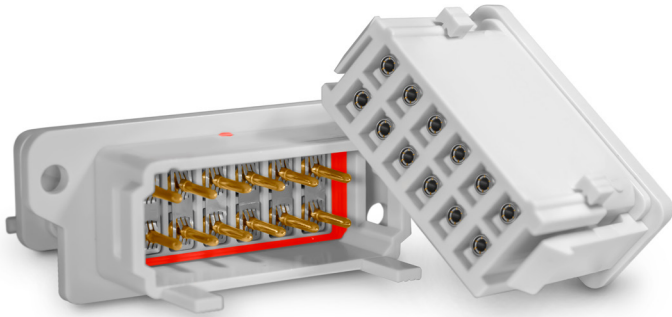
Smiths Interconnect makes no warranties as to the accuracy or completeness of the information, and disclaims any liability regarding its use.

Smiths Interconnect reserves the right to modify design and specifications, in order to improve quality, keep pace with technological development or meet specific production requirements.

No reproduction or use without express permission of editorial and pictorial content, in any manner.

REP Series

Environmentally - Sealed Rectangular Plastic Connectors



Optimised for
use in rail and
embedded
applications

Smiths Interconnectors' REP Series of multi-pole, sealed, and plastic connectors, provides a quick and secure connection of embedded equipment across a wide range of applications, such as sensors, brakes, lighting, air conditioning and communications found within industrial, rail, test and measurement, automotive, public works and defence.

The REP Series is available with the proven Hypertac® hyperboloid contact technology which ensures excellent reliability under shock and vibration, and allows up to 20,000 mating cycles and high current rating up to 18 A. REP connectors are also available in the EasyREP version, using MR screw machined contacts and allowing up to 500 mating cycles.

REP and EasyREP connectors are available in three layouts, with 2, 6, and 12 ways. Both versions are available with crimp termination contacts, for cable harness applications, and with straight or bent termination contacts for PCB mount applications. A shunt accessory is available for both versions, enabling derivation inside the connector for transmission of information to different locations.

Only one contact can be used for cross section cables 0.5 mm² to 2.5 mm² (20-13 AWG) according to NFF 63-808 and EN 50306 standards. No specific tool is required, with consequent reduction of supply chain, maintenance and cabling costs. Furthermore, for easy mounting, the connector includes polarized guides and provides several configurations: cable to cable, clips, front and back panel mount.

REP and EasyREP connectors are available for delivery as a complete, tested pre-cabled solution according to customers' specifications.

Features

Compact, flexible design

- Standard insulators available in 2, 6 and 12-way configurations
- Crimp, straight and bent termination options

Easy mounting and maintenance

- No specific tooling required for mounting
- One contact required for cross-section cables 0.50-2.50 mm² (20-13 AWG) to NFF 63-808 and EN 50-306 standards

High quality, integrated features

- Overmoulded silicone grommet and interfacial seal delivers IP66 and IP67 protection
- Vibration resistance to EN 61-373, Category 2 standards
- Compliance to fire and smoke standards
- Improved polarised guides
- Three coding devices: cable-to-cable, clip locking, and front and back panel mount

Contact technologies

- Low insertion/extraction forces
- Minimal contact resistance
- Stable signal integrity

Benefits

Optimised for rail and embedded applications

- Space and weight savings
- Qualified to ensure high degree of safety
- Able to accept a large panel of cables with standard offering

Fast and reliable connection

- Ensure failure-free performance in extremely demanding environments
- Immunity to fretting caused by mating/unmating and shock and vibration

Reduced cost of ownership

- Minimised supply chain, inventory and maintenance costs
- Lowered cabling costs

Superior performance

- Hypertac® and MR contacts ensure higher current carrying capacity than contacts of the same size

Complete, tested pre-cabled solutions available to customer's exact specifications

Available Contact Technologies

Features and Benefits

Hypertac® Hyperboloid - Original LHC

Long contact life

Industry-leading mating cycles (up to 20,000) provide low cost of ownership

Superior signal integrity

No discontinuity when measured down to 2ns

Low insertion/extraction forces

Ergonomic mating without cost and size of mate assist hardware

Lower contact resistance

Low power consumption / lower voltage drop across connector

Higher current ratings

Smaller contacts needed to carry power for reduced size and weight

Immunity to shock and vibration

Reliability under harsh environmental conditions

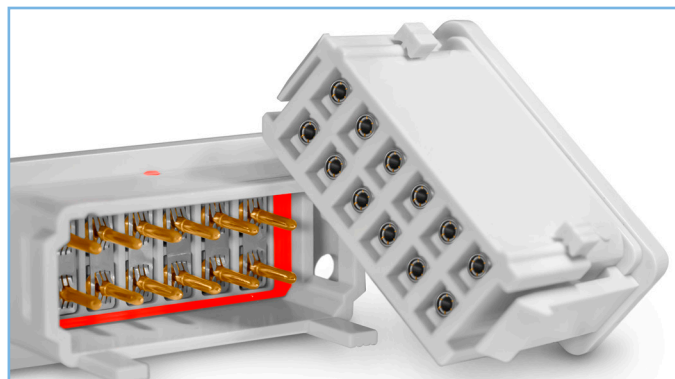
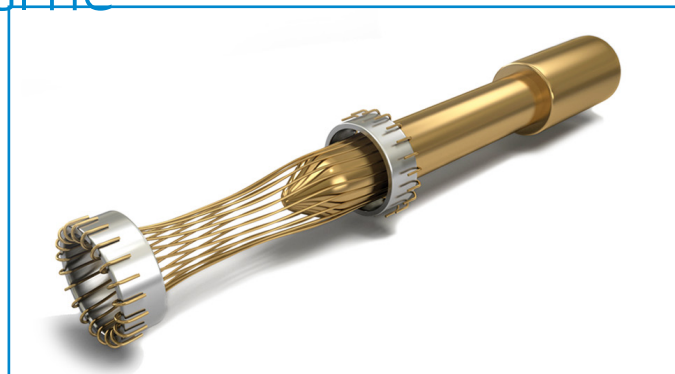
360° contact wipe

Self-cleaning contacts assure uninterrupted connection

Cable section

From 0.5 to 2.5 mm² cross section (20-13 AWG)

RoHS compliance



Screw-machined contact - MR

Rail standard contact life

Mechanical life >500 cycles

Tested signal integrity

No contact interruption >50 ns

Flexible design

The inner clip and the socket body are manufactured and plated separately

Reliable and cost effective

The production of machined specific contact bodies allows for high volume

Low insertion/extraction forces

Ergonomic mating without cost and size of mate assist hardware

Low contact resistance

Low power consumption / lower voltage drop across connector

Higher current ratings

Small contacts needed to carry power for reduced size and weight

Cable section

From 0.75 to 2.5 mm² cross section (18-13 AWG)

RoHS compliance



Technical Characteristics

STANDARDS

Contact Arrangements Contact Diameter Weight (contacts included)	2, 6, 12 Size 16: Ø 1.50 mm (0.059 in) REP102 with contacts: 7.74g REP202 with contacts: 8.18g REP402 with bent contacts: 9g REP402 with straight contacts: 8g REP506 with contacts: 17.9g REP606 with contacts: 19.3g REP406 with bent contacts: 15.5g REP406 with straight contacts: 13.5g REP512 with contacts: 32.8g REP612 with contacts: 33.9g REP412 with bent contacts: 25g REP412 with straight contacts: 22g	
Coding Configurations Polarisation	Cable-to-cable, clip locking, panel mount 180°	

Materials & Plating

Contacts Insulator Seal & Grommet	Gold over nickel plating Polycarbonate Overmoulded silicone	
--	---	--

Mechanical & Environmental

Contact Retention Force Contact Retention Force PCB version Clip Locking Retention Force Mating Cycles Temperature Range	> 70 N > 20 N >110 N > 500 cycles -75 °C to +100 °C (for crimp versions) -40 °C to +250 °C (for receptacles REP4xx)	- - - - -
Vibration Flammability	Category 2 (bogie installation) I2 F1 Condition 4 HL3 for R22 30s Category 2 V-O	EN 61373 NF F 16-101 NF F 16-102 EN 45545-2 EN ISO 11925-2 UNI CEI 11170-3 UL94
Salt Spray Fluid Resistance IP Level	> 96 hours Cleaning substances, gasoline/oil, acids, IP66, IP67	ASTM-B-117 EN 60529

Electrical

Current Rating Voltage Rating Dielectric Withstanding Voltage Contact Resistance Insulation Resistance	18 A 230 V (400 V with plastic dummy contacts) 2725 V ≤ 2.5 mΩ ≥ 5x10 ³ MΩ	- EN 50124-1, pollution degree 3 EN 50124-1 - -
---	---	---

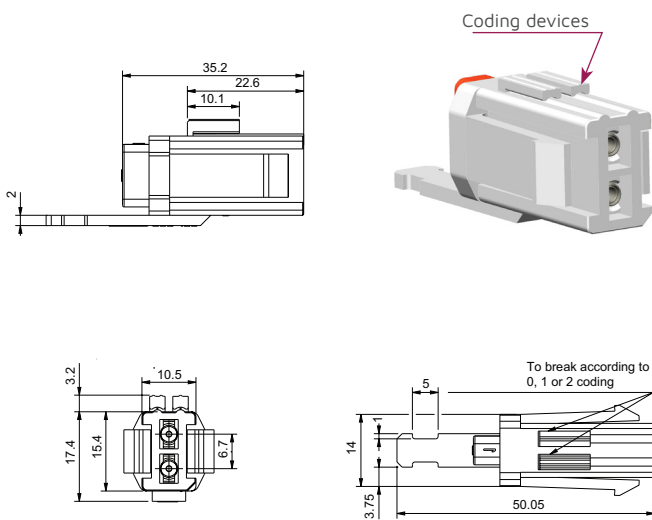
Dimensions 2,6,12-Way Connectors

2 Way Plugs & Receptacles

Cable Harness, Crimp Termination

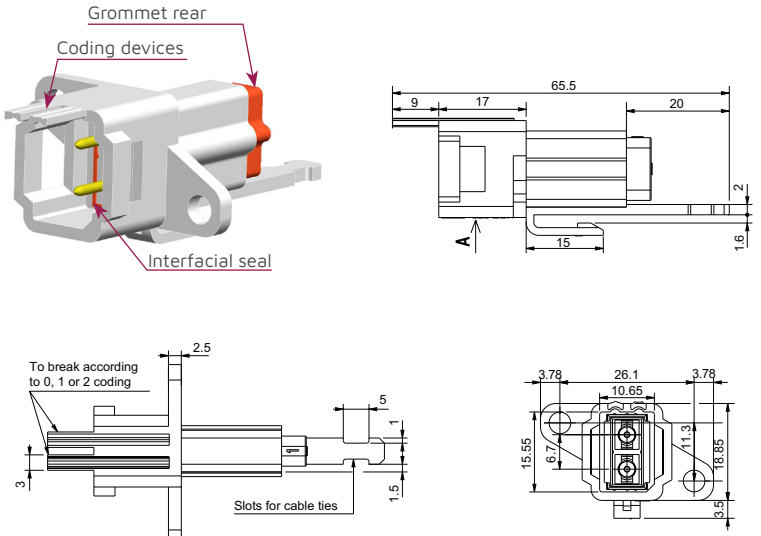
Female plug

P/N: REP-102-XX-2X-XX



Male receptacle

P/N: REP-202-XX-20-XX

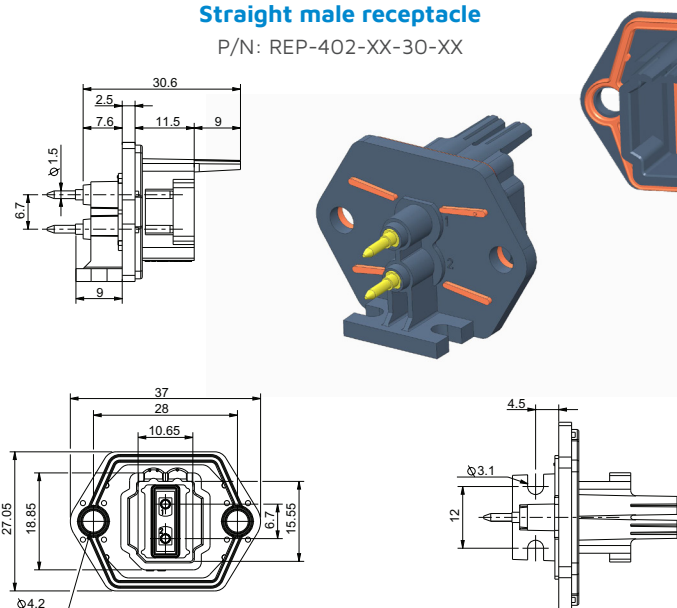


2 Way Receptacles

PCB/Panel Mount, Straight & Bent Termination

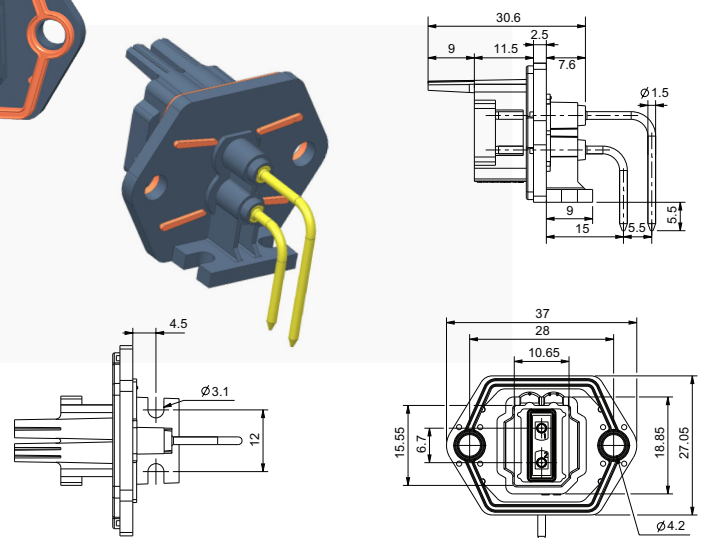
Straight male receptacle

P/N: REP-402-XX-30-XX



Bent male receptacle

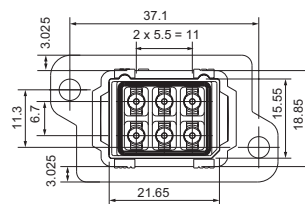
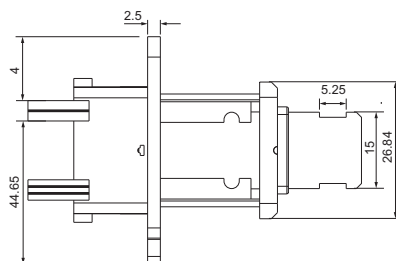
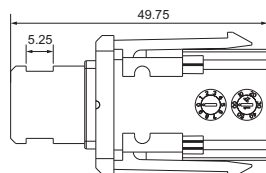
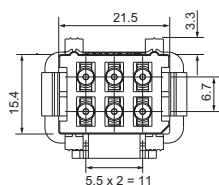
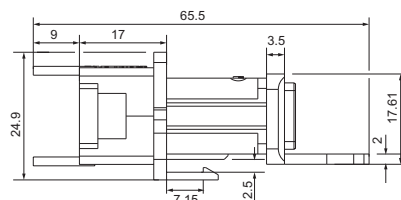
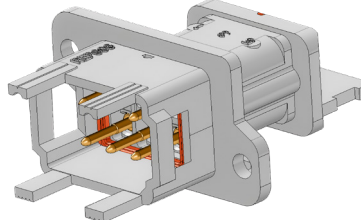
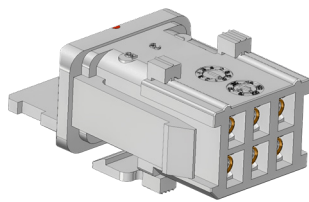
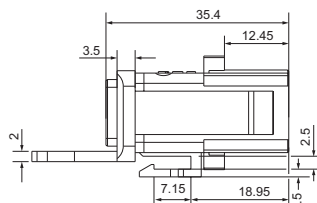
P/N: REP-402-XX-10-XX



6 Way Plugs & Receptacles

Female plug

P/N: REP-506-XX-2X-XX

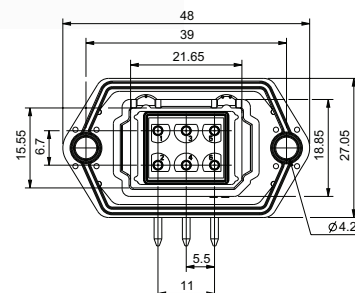
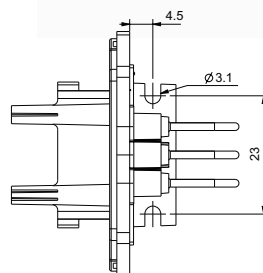
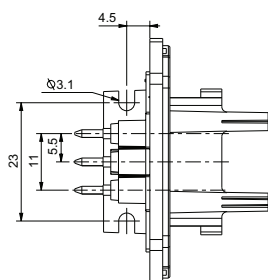
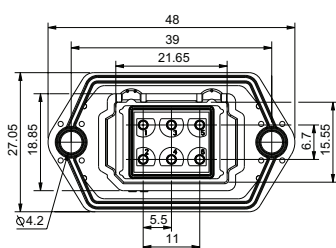
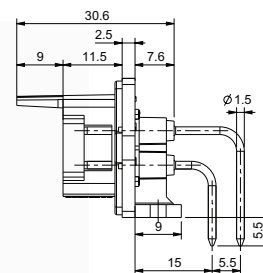
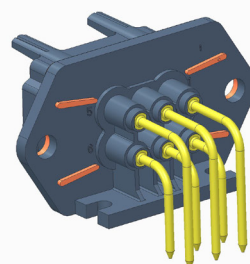
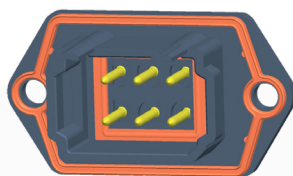
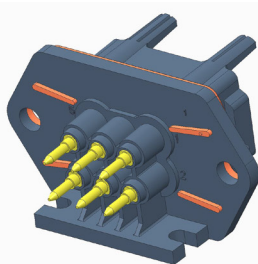
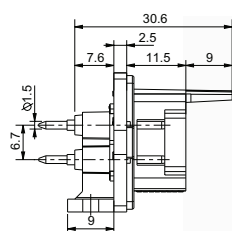


6 Way Receptacles

PCB/Panel Mount, Straight & Bent Termination

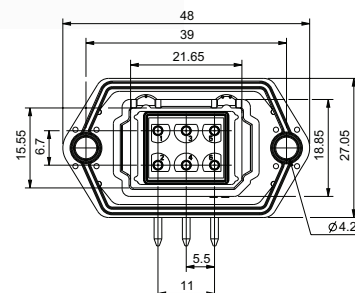
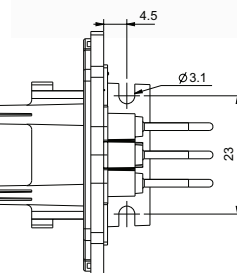
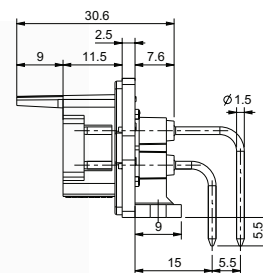
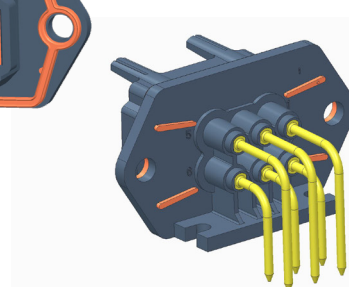
Straight male receptacle

P/N: REP-406-XX-30-XX



Bent male receptacle

P/N: REP-406-XX-10-XX

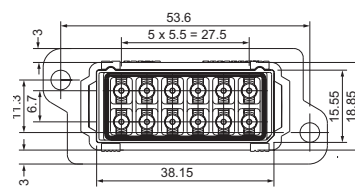
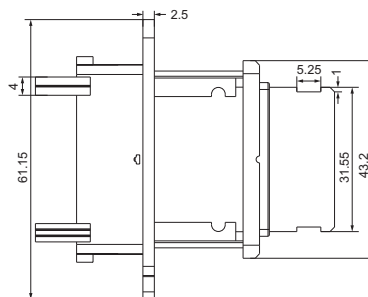
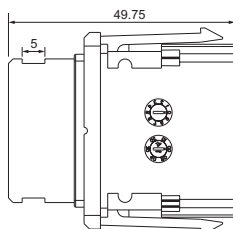
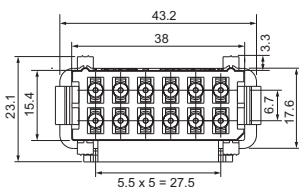
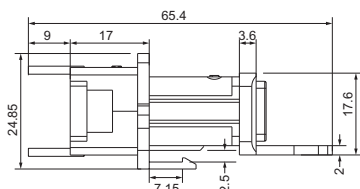
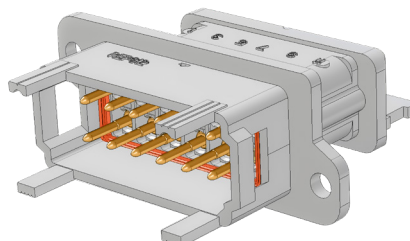
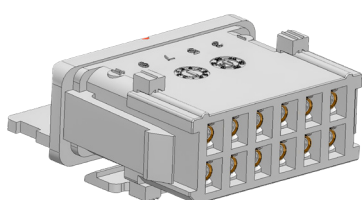
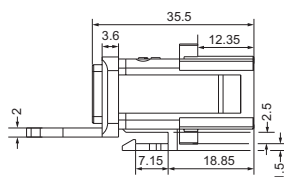


12 Way Plugs & Receptacles

Cable Harness, Crimp Termination

Female plug

P/N: REP-512-XX-2X-XX

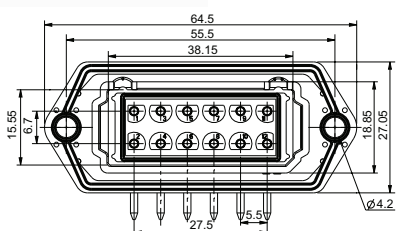
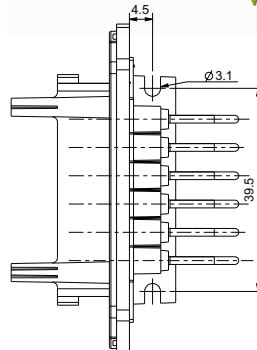
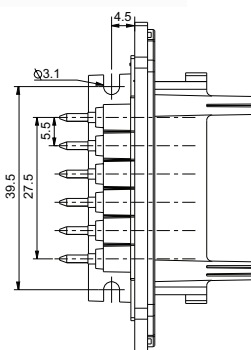
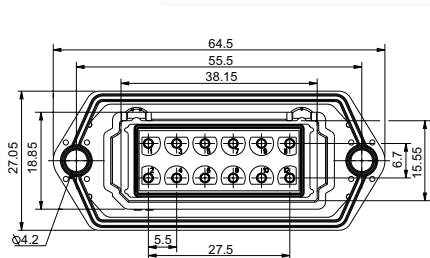
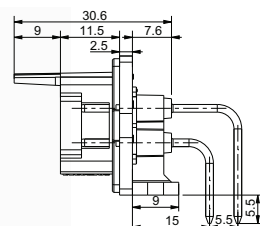
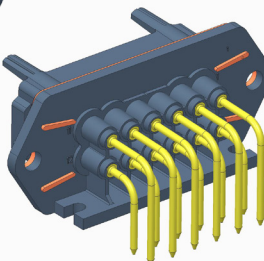
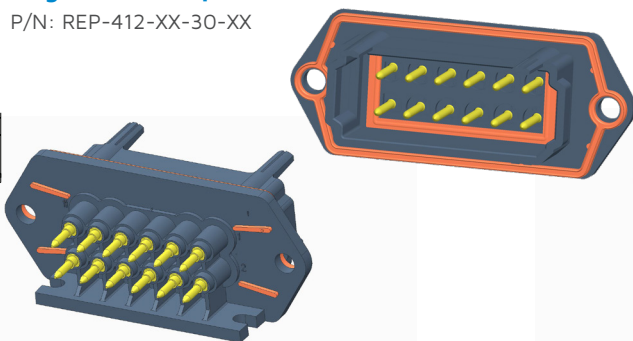
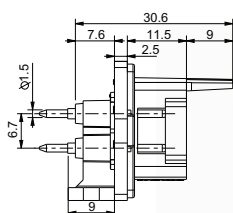


12 Way Receptacles

PCB/Panel Mount, Straight & Bent Termination

Straight male receptacle

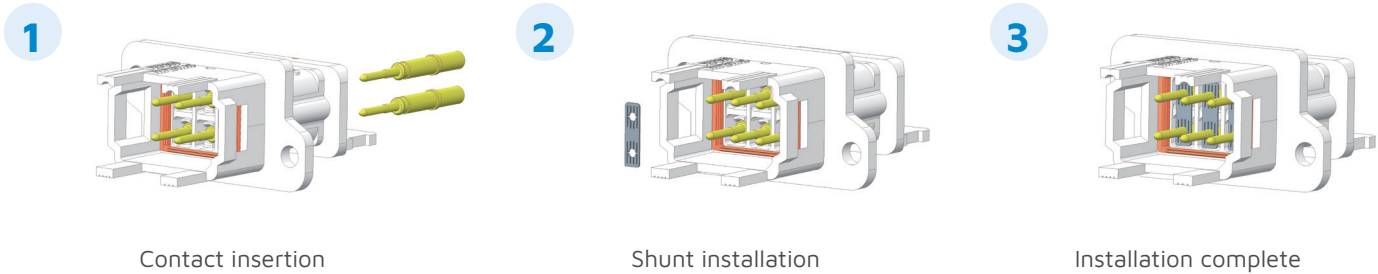
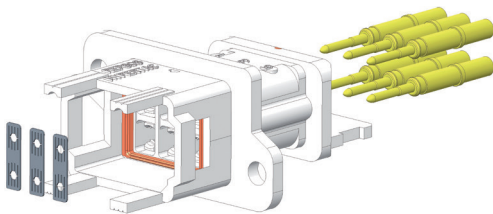
P/N: REP-412-XX-30-XX



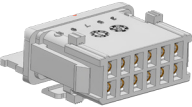


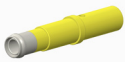


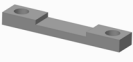
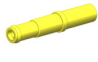
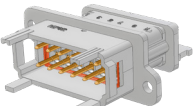






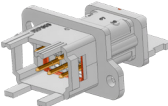




Dimensions are in mm | All specifications are subject to change without notice

Assembly Contacts & Accessories

Contact & Shunt Assembly



Accessories

CONNECTOR						CONTACTS			
	Cable Retainer	Panel Seal	Panel Mount Bracket	Dummy Contacts ⁽¹⁾	Filler Plug		Crimp-ing Tool	Loca-tor	Selector Positions Wire Cross Sections
 Female plug, 12-way REP 512	 REP 007-12		 REP 003-12			 0151832-20-N1	Astro-tool TGV 101	TGV 202 rouge	Position 5: AWG 20-17 Only for 0151832-20-N1
 Female plug, 6-way REP 506	 REP 007-06		 REP 003-06			 850-1018772-000	Daniels FT8	SH 463 rouge	Position 5: AWG 18-17 Only for 850-1018772-000
 Male receptacle, 12-way REP 612	 REP 007-12	 REP 006-12	 REP 003-12	 REP 002	 REP 001	 0151081-20-1G	Astro-tool TGV 101	TGV 202 rouge	Position 6: AWG 16-15 Position 7: AWG 14-13 Extraction Tool SD-0150000012
 Male receptacle, 6-way REP 606	 REP 007-06	 REP 006-06	 REP 003-06			 REP 901	Daniels FT8	SH 463 rouge	Position 5: AWG 20-18 Position 6: AWG 16-14 Position 7: AWG 13 Extraction Tool SD-0150000012 (contacts) Insert Tool S_147 (Shunt REP 901)

(1) Use up to 400 V

Dimensions are in mm | All specifications are subject to change without notice

How To Order



REP



1

2

3

4

5

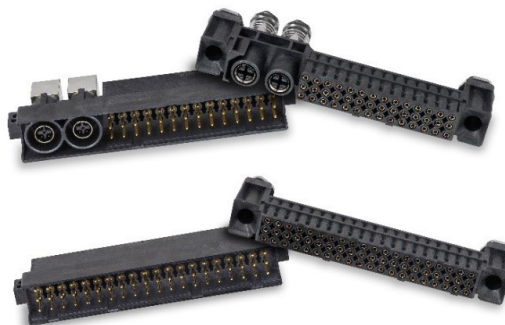
1 Series	REP Series [fixed]
2 Layout	<div>102 Plug - 2 socket contacts</div> <div>202 Receptacle - 2 pin contacts</div> <div>402 Receptacle for pcb or panel mount - 2 pin contacts</div> <div>406 Receptacle for pcb or panel mount - 6 pin contacts</div> <div>412 Receptacle for pcb or panel mount - 12 pin contacts</div> <div>506 Plug - 6 socket contacts</div> <div>512 Plug - 12 socket contacts</div> <div>606 Receptacle - 6 pin contacts</div> <div>612 Receptacle - 12 pin contacts</div>
3 Part - Polarity	<div>03 Plug without contact</div> <div>04 Receptacle without contact</div> <div>12 Female plug with Hyperboloid contacts*</div> <div>23 Male receptacle with contacts</div> <div>1M Female plug with MR contacts**</div> <div>27 Male receptacle with tinned contacts</div> <div>2B Male receptacle with RoHS tinned contacts</div>
4 Termination Style	<div>00 Without contact</div> <div>10 Bent termination contact for REP 402, 406 and 412</div> <div>20 Crimp contact 20-13 AWG for REP 102, 506, 512, 202, 606 and 612 (Pin and Hyperboloid Contact only)</div> <div>21 Crimp contact 18-13 AWG for REP 102, 506, 512 (MR Contact only)</div> <div>30 Straight termination contact for REP 402, 406 and 412</div>
5 Accessories	<div>00 Without accessory</div> <div>01 Filler plug for REP 102, 506, 512, 202, 606 and 612</div> <div>02 Plastic dummy contact for REP 102, 506, 512, 202, 606 and 612</div> <div>03 Bracket for panel mounting for REP 202, 606 and 612</div> <div>04 Spacer for straight termination contact for REP 402, 406 and 412</div> <div>07 With accessory for cable retainer for REP 506, 512, 606 and 612</div> <div>09 With shunts for REP 606 and 612</div> <div>10 With panel seal for REP 606 and 612</div>

You may also be interested in



Compact Signal and Ethernet PCB Connectors

Compact, high-speed, and reliable solution for PCB to PCB and floating mounting rack and panel applications
Hyperboloid contact technology for signal and high speed quadrx 100 Ohm contacts
Compliance with the main European Railway standards (EN45545-2, NF F61030, EN50155:2017, STM-S-001ind.D & more), with MIL-C-28748 and MIL-STD-202-301 standards and EIA/IEC standards for contact resistance and environmental testing



Modular and Mini-Modular Connectors

Mixed signal, power, coaxial, fiber optic and pneumatic modules
Provides up to 200 amp power
Cable to chassis and rack & panel; Plastic backshell with strain relief and half turn quick disconnect jackscrew
Float mountable for blind mating
Configurations compliant to EN45545 standards
Hyperboloid contact technology



Rugged M12 Connectors

Compact IP67 metal shell
360° EMI shielding
Hyperboloid contact technology
Compliant with rail fire and smoke standards
Straight and right angle 90° rotatable backshell
Compatible with most commonly used rail cables



Worldwide Support

Connectors

Americas

Sales

connectors.uscsr@smithsinterconnect.com

Technical Support

connectors.ustechsupport@smithsinterconnect.com

Europe

Sales

connectors.emeacsr@smithsinterconnect.com

Technical Support

connectors.emeatechsupport@smithsinterconnect.com

Asia

Sales

asiacsr@smithsinterconnect.com

Technical Support

asiatechsupport@smithsinterconnect.com

Fibre Optics & RF Components

Americas

Sales

focom.uscsr@smithsinterconnect.com

Technical Support

focom.techsupport@smithsinterconnect.com

Europe

Sales

focom.emeacsr@smithsinterconnect.com

Technical Support

focom.techsupport@smithsinterconnect.com

Asia

Sales

focom.asiacsr@smithsinterconnect.com

Technical Support

focom.techsupport@smithsinterconnect.com

Semiconductor Test

Americas

Sales

semi.uscsr@smithsinterconnect.com

Technical Support

semi.techsupport@smithsinterconnect.com

Europe

Sales

semi.emeacsr@smithsinterconnect.com

Technical Support

semi.techsupport@smithsinterconnect.com

Asia

Sales

semi.asiacsr@smithsinterconnect.com

Technical Support

semi.techsupport@smithsinterconnect.com

RF/MW Subsystems

Americas, Europe & Asia

Sales

subsystems.csr@smithsinterconnect.com

Technical Support

subsystems.techsupport@smithsinterconnect.com

Connecting Global Markets

more > smithsinterconnect.com | in   

Copyright© 2023 Smiths Interconnect | All rights reserved | Version 3.0

The information contained within this document is subject at all times to applicable Export Control regulations and legal requirements.

Mouser Electronics

Authorized Distributor

Click to View Pricing, Inventory, Delivery & Lifecycle Information:

[Smiths Interconnect:](#)

[REP606040000](#)