

**UL Listed:** For use with the PFC-4410RC Series

**Dimensions:** 2 1/4" x 3 1/2" x 3"

**Weight:** .315 lb.

**Assembly:** Socketed relay in plastic mounting track

**Power Requirements:** 40mA at 24VDC

**Contact Ratings:**

Each relay has DPDT contacts,

Rated at 10 amps resistive,

120/240VAC, 0-30VDC

**Stock number:** 3004725

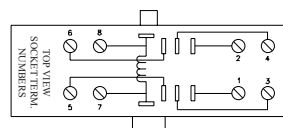
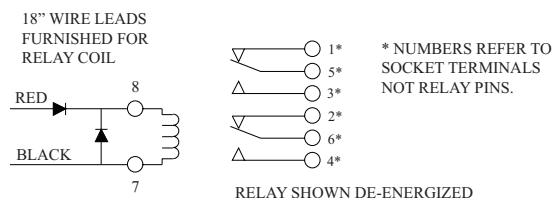
The ARM-2 Auxiliary Relay Module is a UL listed option when factory installed in the Potter PFC-4410RC Series.

When the ARM-2 is used the additional power required for this relay module must be subtracted from the total circuit current available. See PFC-4410RC Manual #5403550. The ARM-2 Auxiliary Relay Module is a non-supervised DPDT Relay designed to be activated

by 24VDC Indicating and/or Releasing, polarity reversing circuits. The module can be used for fan shutdown, door release, elevator recall, etc.

**Note:** One to four ARM-2 modules in the PFC-4410RC series may be utilized to provide multiple auxiliary functions.

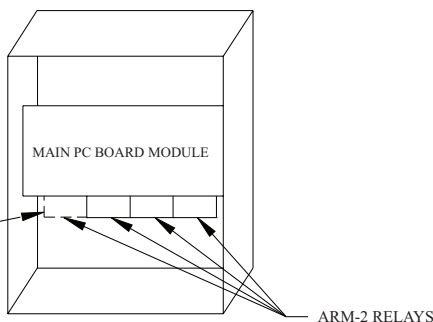
## Wiring



FOURTH RELAY FOR PFC-4410

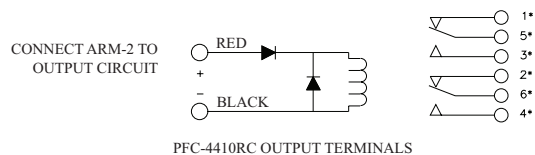
DWG# 977-1

## Placement In PFC-4410RC Series Control Unit



## ARM-2/PFC-4410RC Installation Hook-Up Diagram

All relays shown in non-activated condition



DWG# 977-2

## Notes:

- \* Numbers refer to socket terminals not relay pins.
- Auxiliary relay operation is determined by programming of the PFC-4410RC Series panel. Consult the appropriate manual for further information.

# Mouser Electronics

Authorized Distributor

Click to View Pricing, Inventory, Delivery & Lifecycle Information:

[AMSECO:](#)

[3004725](#)