

**MICRO SWITCH**

A DIVISION OF MINNEAPOLIS-HONEYWELL REGULATOR COMPANY  
MINNEAPOLIS, MINN.

FED. MFR. CODE 91929

# SWITCH - BASIC

CATALOG LISTING

**YA-2RV-A2**

ADP5000

YA-2RV-A2  
ISSUE 2

CATALOG LISTING  
**YA-2RV-A2**  
PAGE 1 OF 1

**M**

DRAWING  
NUMBER

9

ISSUE

REPLACES

RELEASE NO.

CHECK

## REVISIONS

A	CO	15663	15 DEC 61
B	CO-3432		
C	CO-73287		
D	CO-77588		
E	CO-93346		
F	0000770		
G	0018388		

17 FEB 06

RJ

CHECK

27 AUG 98

8 JUL 03

17 FEB 06

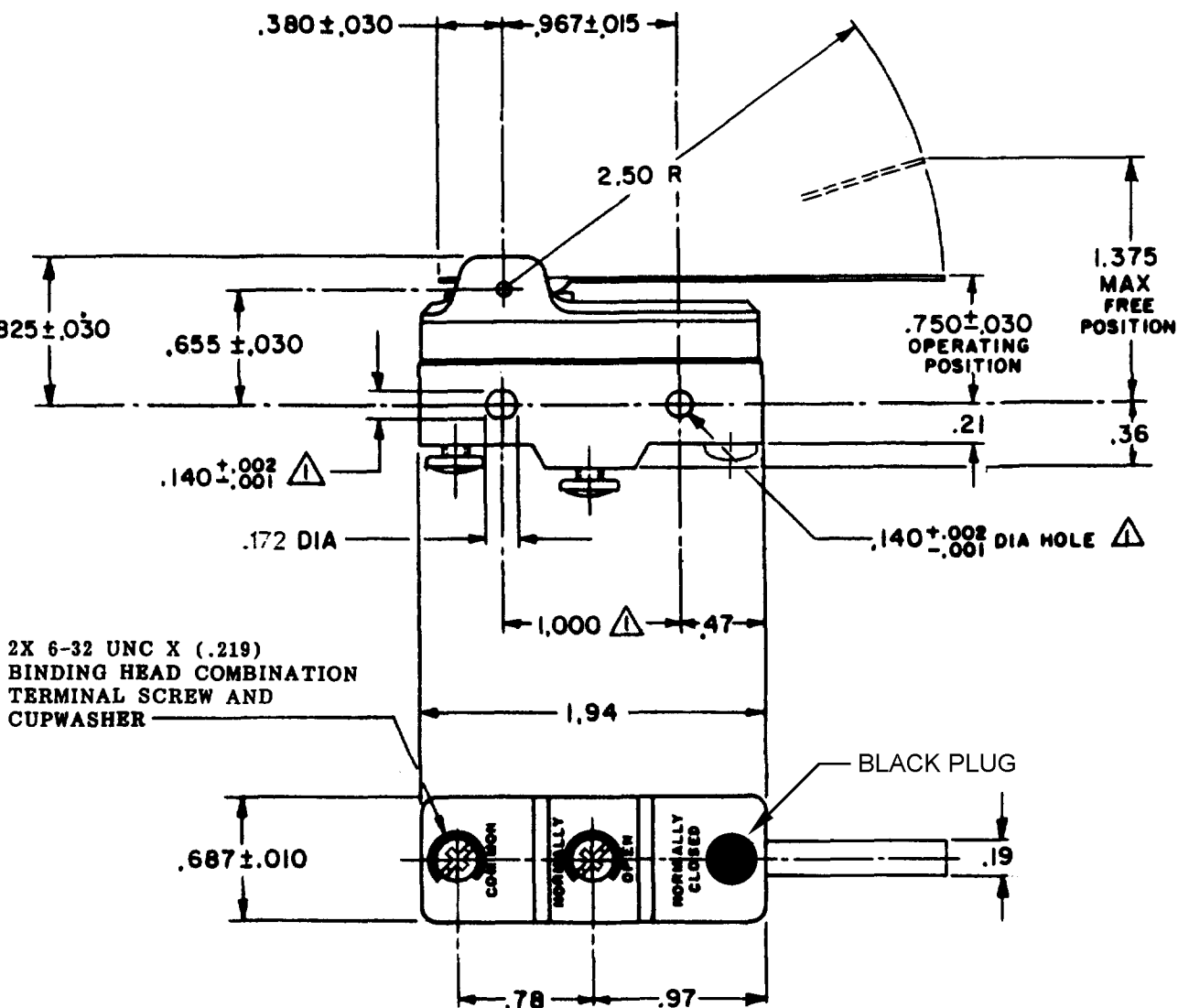
9 JAN 62

CHECK

15 DEC 61

DRAWN

GCH



### NOTE

△ MOUNTING HOLES WILL ACCEPT PINS OR SCREWS OF .139 MAX DIA ON 1.000 ± .002 CENTERS

THIS DRAWING COVERS A PROPRIETARY ITEM AND IS THE PROPERTY OF MICRO SWITCH, A DIVISION OF MINNEAPOLIS-HONEYWELL REGULATOR CO. THIS DRAWING IS NOT TO BE COPIED OR USED WITHOUT THE APPROVAL OF MICRO SWITCH.

CHARACTERISTICS	ELECTRICAL DATA	SCALE --- FULL
OPERATING FORCE ----- 2 1/2 OZ MAX	CONTACT ARRANGEMENT S P N O	DO NOT SCALE PRINT
RELEASE FORCE ----- 1/2 OZ MIN	L23	UNLESS OTHERWISE SPECIFIED
PRETRAVEL ----- .625 MAX	20A - 125, 250 OR 480 VAC 10A - 125 VAC "IL"	DIMENSIONS ARE IN INCHES
DIFFERENTIAL TRAVEL ----- .109 MAX	1HP - 125 VAC, 2HP - 250 VAC 1/2A - 125 VDC, 1/4A - 250 VDC	<b>TOLERANCES ARE:</b>
OVERTRAVEL ----- .078 MIN	L288 L308 L315	ONE PLACE (.0) ±.030 TWO PLACE (.00) ±.015 THREE PLACE (.000) ±.005 ANGLES ±
	CE	WEIGHT
	20(3)A 250V ~ T85 5E4	

RASTER

J-50376

# Mouser Electronics

Authorized Distributor

Click to View Pricing, Inventory, Delivery & Lifecycle Information:

[Honeywell:](#)

[YA-2RV-A2](#)