

MICRO SWITCHFREEPORT ILLINOIS, U.S.A
A DIVISION OF HONEYWELL

FED. MFG. CODE 91929

SWITCH - BASIC

CATALOG LISTING

WM-1RW82294T**WM-1RW82294T****M**DRAWING
NUMBER**8**

ISSUE

REPLACES X74644-WM

RELEASE NO. PR-11142

CHECK

REVISIONS

A	C080986
	JALA
	26 JUN 95
B	0035411
	JA
	23NOV07

ASD

CHECK

MAY 82

3

CEB

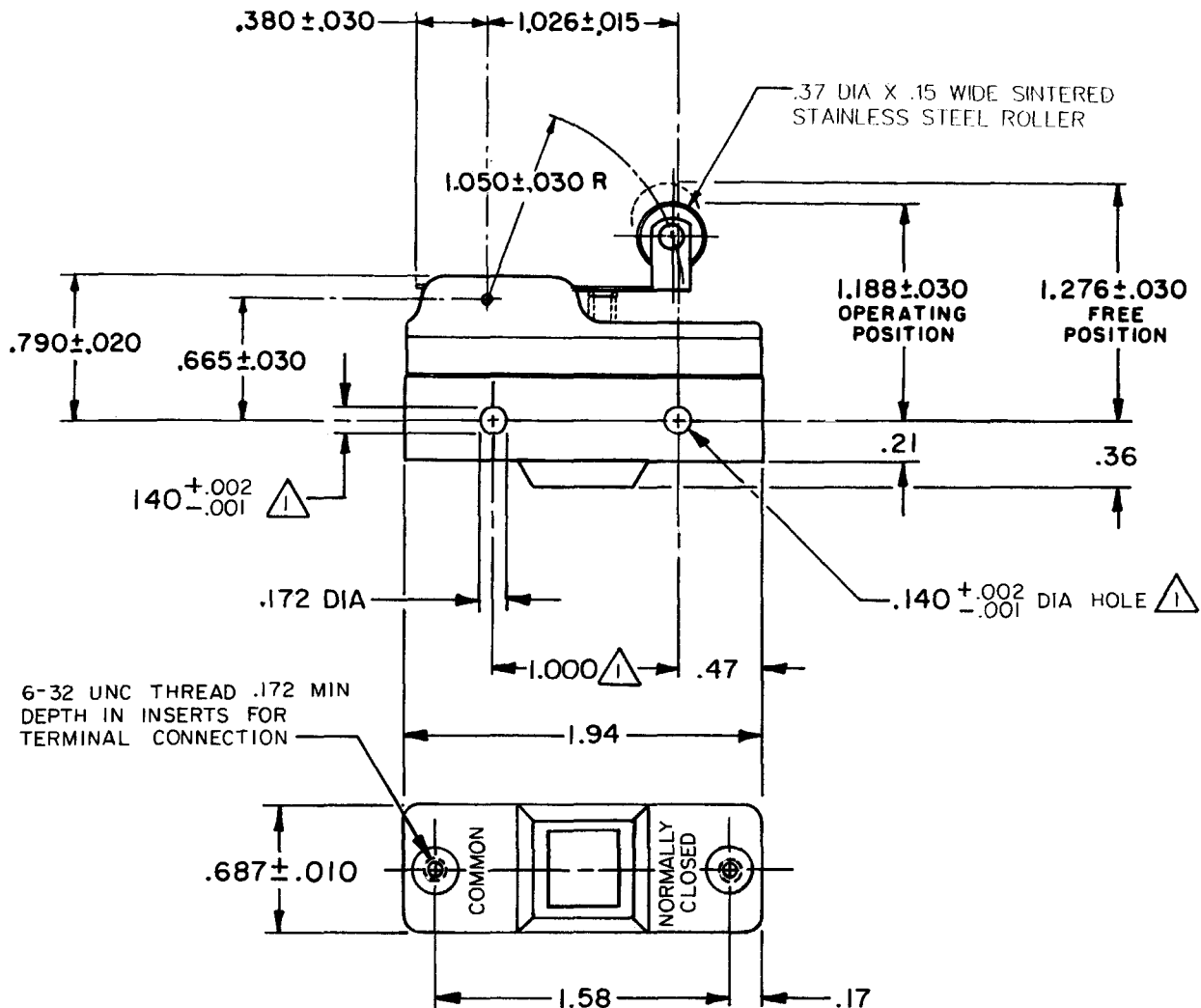
CHECK

30 APR 82

WJM

RASTER

DRAWN

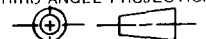


NOTES

- \triangle MOUNTING HOLES WILL ACCEPT PINS OR SCREWS OF $.139$ MAX DIA ON $1.000 \pm .002$ CENTERS
- 2 - TERMINAL SCREW (2) FURNISHED UNASSEMBLED

THIS DRAWING COVERS A PROPRIETARY ITEM AND IS THE PROPERTY OF MICRO SWITCH, A DIVISION OF HONEYWELL. THIS DRAWING IS NOT TO BE COPIED OR USED WITHOUT THE APPROVAL OF MICRO SWITCH.

THIRD ANGLE PROJECTION

**CHARACTERISTICS**

OPERATING FORCE ---- 5 3/4 OZ MAX

RELEASE FORCE ---- 1 1/2 OZ MIN

DIFFERENTIAL TRAVEL ---- .001 - .013

OVERTRAVEL ---- .094 MIN

ELECTRICAL DATACONTACT ARRANGEMENT
S P N CUL LISTED - FILE E12252
CODE L161 22A-125, 250, 480VAC
1/2HP-125VAC; 1HP-250VAC

L288

L315

L318



22A 250V ~ T85 5E4

SCALE FULL

DO NOT SCALE PRINT

TOLERANCESAPPLY TO DESIGN UNITS. CONVERSIONS ARE ONLY FOR REFERENCE. UNLESS NOTED, TOLERANCES ARE \pm

DIM.	TOL.	DIM.	TOL.
mm	mm/in	in	mm/in
NO PLACES	X	1/.04	
ONE PLACE	X,X	0.4/.016	X,X 0.8/.03
TWO PLACES	X,XX	0.15/.006	X,XX 0.36/.015
THREE PLACES	X,XXX		X,XXX 0.13/.006
ANGLES			

SI METRIC

DESIGN UNITS



US CUSTOMARY



WEIGHT .076 LB

Mouser Electronics

Authorized Distributor

Click to View Pricing, Inventory, Delivery & Lifecycle Information:

[Honeywell:](#)

[WM-1RW82294T](#)