

MICRO SWITCHA DIVISION OF MINNEAPOLIS-HONEYWELL REGULATOR COMPANY
PRESIDENT, ILLINOIS

FED. MFR. CODE 91929

SWITCH-BASIC

CATALOG LISTING

V3-601

CK-GO100

V3-601

M

DRAWING
NUMBER

10

8

ISSUE

12

REVISIONS

A	CO15698	M B F	9 MAR 61
B	CO21688	M B F	3 OCT 66
C	CO24941	M B S	3 DEC 68
D	CO26075	M B S	27 AUG 69
E	CO26511	R E R	21 OCT 69
F	CO39182	W L W	18 FEB 78
G	CO56987	SMA	1 OCT 85
H	CO73764	D H D	30 NOV 92

(M) V3-601
ISSUE 8

REPLACES

RELEASE NO.

CHECK

CHECK

CHECK

CHECK

CHECK

CHECK

CHECK

CHECK

CHECK

CHECK

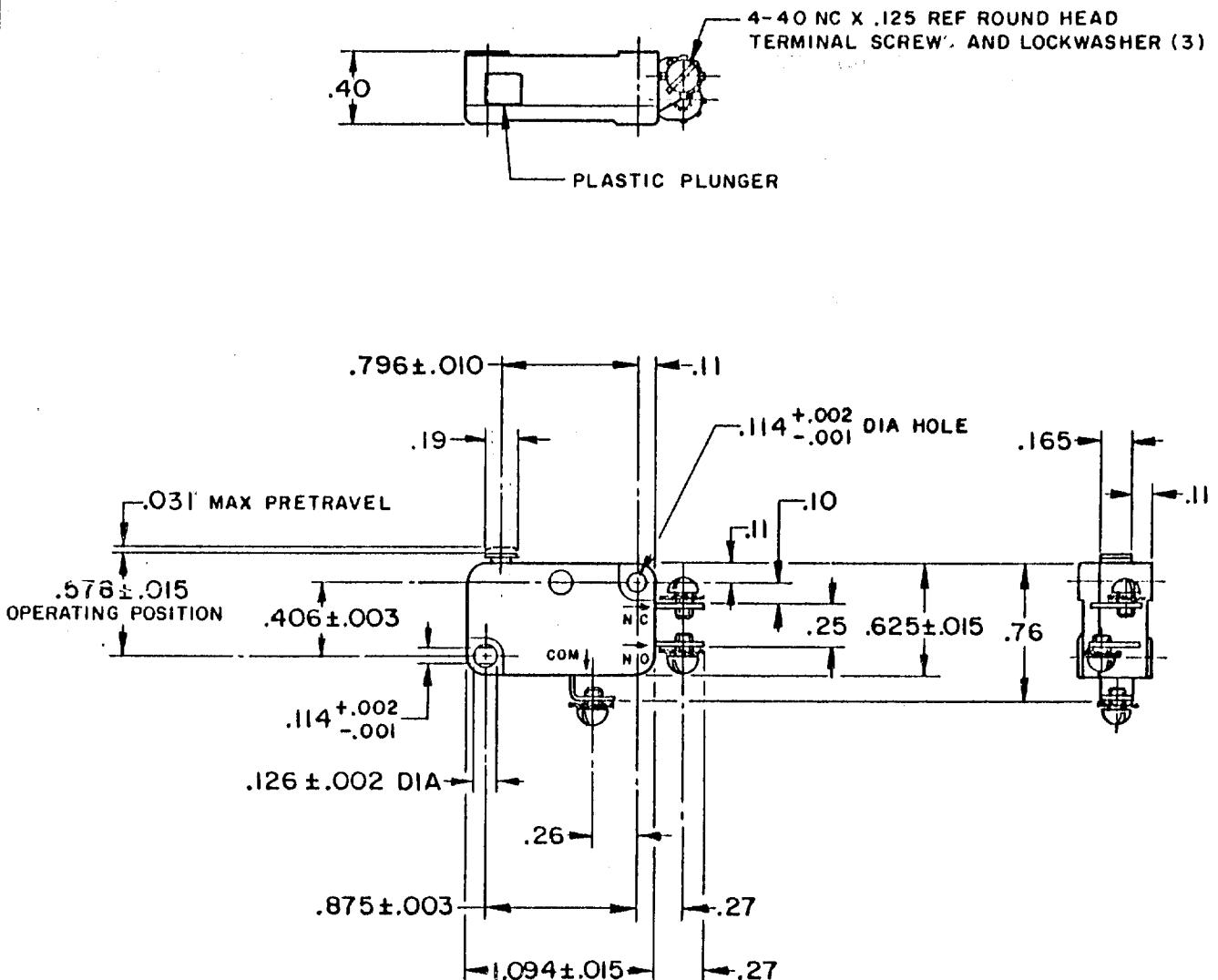
CHECK

CHECK

CHECK

CHECK

CHECK



THIS DRAWING COVERS A PROPRIETARY ITEM AND IS THE PROPERTY OF MICRO SWITCH, A DIVISION OF MINNEAPOLIS-HONEYWELL REGULATOR CO. THIS DRAWING IS NOT TO BE COPIED OR USED WITHOUT THE APPROVAL OF MICRO SWITCH.

CHARACTERISTICS

OPERATING FORCE ——— 6-14 OZ
RELEASE TRAVEL ——— .005-.017
RELEASE FORCE ——— 4 OZ MIN
DIFFERENTIAL TRAVEL ——— .006-.016
OVERTRAVEL ——— .010-.024
FREE POSITION ——— .625 MAX

ELECTRICAL DATA

CONTACT ARRANGEMENT
S P D T

L86

15.1A 1/3HP 125, 250 VAC
1/2A 125 VDC, 1/4A 250 VDC
5A 125 VAC "L"

SCALE FULL

DO NOT SCALE PRINT.

UNLESS OTHERWISE
SPECIFIED
DIMENSIONS ARE IN INCHES
TOLERANCES ARE:
ONE PLACE (.0) ±.030
TWO PLACE (.00) ±.015
THREE PLACE (.000) ±.005
ANGLES ±

WEIGHT .023 LB MAX



Mouser Electronics

Authorized Distributor

Click to View Pricing, Inventory, Delivery & Lifecycle Information:

[Honeywell:](#)

[V3-601](#)