

MICRO SWITCH

FREEPORT, ILLINOIS, U.S.A.
A DIVISION OF HONEYWELL
FED. MFG. CODE 91929

SWITCH - BASIC

CATALOG LISTING

V3-3045

CK-X3465

V3-3045

M

DRAWING
NUMBER

3 6

ISSUE

3 3

REPLACES X76257-V3

RELEASE NO. PR-11793

CHECK

CHECK

CHECK

CHECK

CHECK

CHECK

CHECK

REVISIONS

| | | |
|----|-------|---------|
| A | CO | 52718 |
| 3 | WJM | FEB 83 |
| B | CO | 0054315 |
| 11 | JAP | JAN 84 |
| C | CO | 0055729 |
| 29 | K E W | AUG 84 |
| D | CO | 000007 |
| 1 | SMA | OCT 85 |
| E | CO | 76104 |
| 9 | GRT | OCT 93 |

FO-52848-A

DRAWN

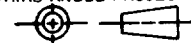
J A P

21 DEC 82

82

THIS DRAWING COVERS A PROPRIETARY ITEM AND IS THE PROPERTY OF MICRO SWITCH, A DIVISION OF HONEYWELL. THIS DRAWING IS NOT TO BE COPIED OR USED WITHOUT THE APPROVAL OF MICRO SWITCH.

THIRD ANGLE PROJECTION



CHARACTERISTICS

OPERATING FORCE — — — 150 GRAM MAX
RELEASE FORCE — — — — 15 GRAM MIN
DIFFERENTIAL TRAVEL — — — .001-.006
OVERTRAVEL — — — — .050 MIN
FREE POSITION — — — — .625 MAX
RELEASE TRAVEL — — — — .010 MIN

ELECTRICAL DATA

CONTACT ARRANGEMENT
S P D T

L83
15.1A 1/2HP 125 OR 250 VAC
1/2A 125 VDC, 1/4A 250 VDC
5A 125 VAC "L"



SCALE FULL

DO NOT SCALE PRINT

TOLERANCES

APPLY TO DESIGN UNITS. CONVERSIONS ARE ONLY FOR REFERENCE. UNLESS NOTED, TOLERANCES ARE ±

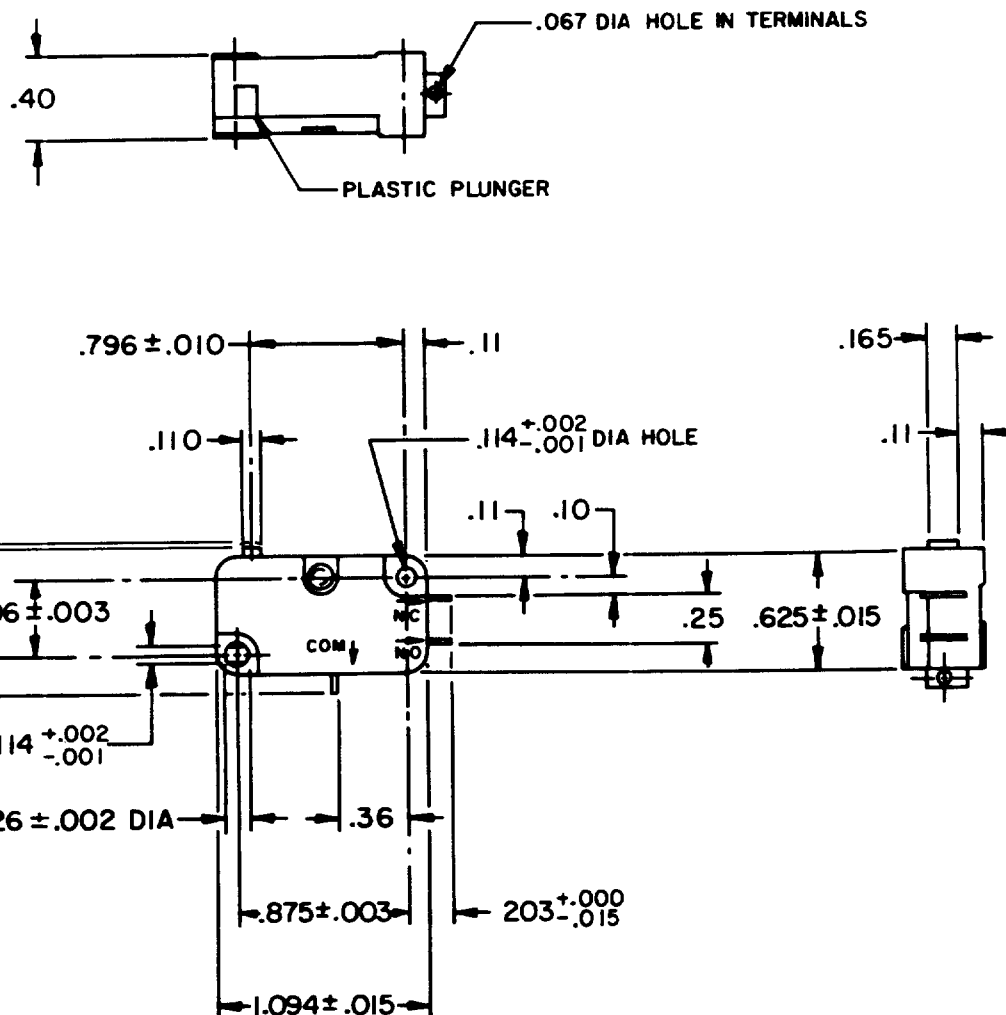
| | DM. | TOL. | DM. | TOL. |
|--------------|-------|------------|-------|------------|
| | mm | mm/in | in | mm/in |
| NO PLACES | X | 1/64 | X | 0.01 |
| ONE PLACE | X.X | 0.01/0.16 | X.X | 0.01/0.16 |
| TWO PLACES | X.XX | 0.01/0.005 | X.XX | 0.01/0.005 |
| THREE PLACES | X.XXX | | X.XXX | 0.01/0.005 |

SI METRIC

US CUSTOMARY

DESIGN UNITS ☐

WEIGHT



NOTE -

- 1 - TERMINALS ARE PLATED FOR SOLDERING
- 2 - PLUNGER MATERIAL WILL WITHSTAND TEMPERATURE OF 300° F

Mouser Electronics

Authorized Distributor

Click to View Pricing, Inventory, Delivery & Lifecycle Information:

[Honeywell:](#)

[V3-3045](#)