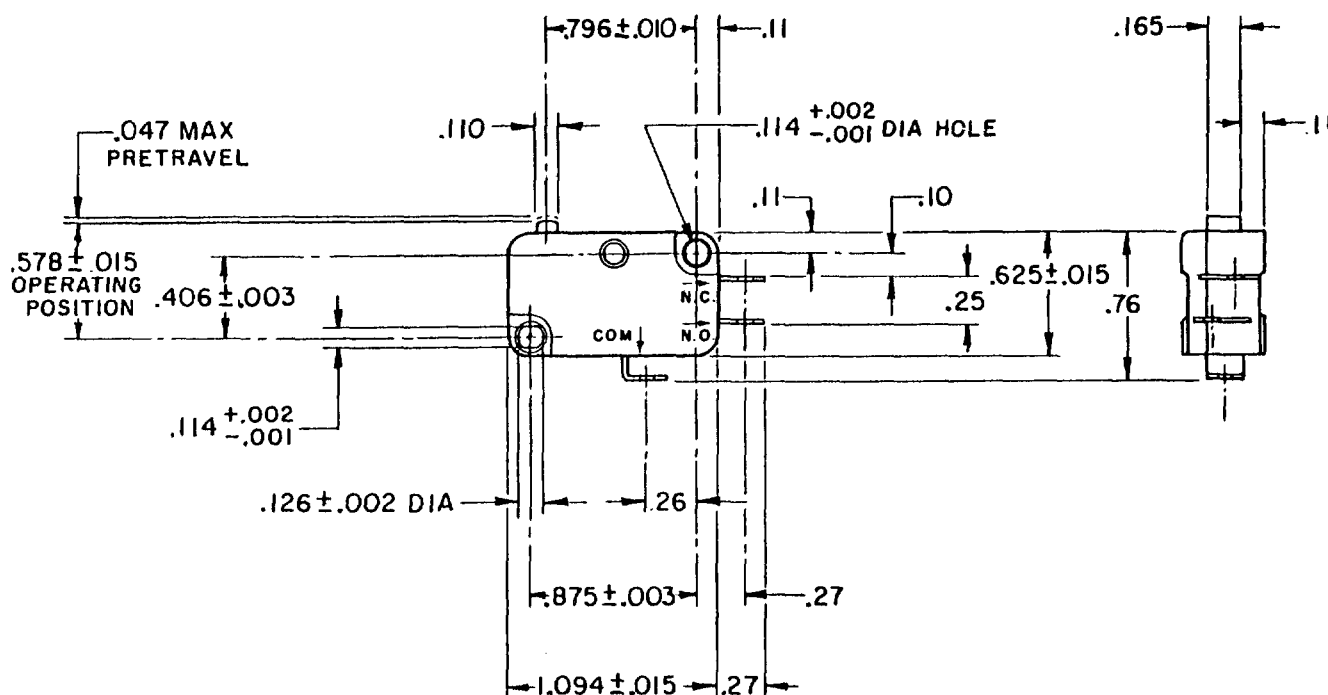
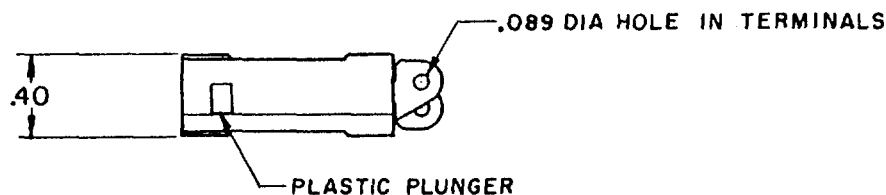


**MICRO SWITCH**FREEPORT, ILLINOIS, U.S.A.
A DIVISION OF HONEYWELL

FED. MFG. CODE 91929

SWITCH-BASIC

CATALOG LISTING

V3-1119**CK-M1900****NOTE -**

- 1 - TERMINALS ARE PLATED FOR SOLDERING
- 2 - CAUTION: DO NOT OVERTRAVEL PLUNGER WITH FORCE IN EXCESS OF FIVE POUNDS

THIS DRAWING COVERS A PROPRIETARY ITEM AND IS THE PROPERTY OF MICRO SWITCH, A DIVISION OF HONEYWELL. THIS DRAWING IS NOT TO BE COPIED OR USED WITHOUT THE APPROVAL OF MICRO SWITCH.

CHARACTERISTICS

OPERATING FORCE --- -75 GRAMS MAX
RELEASE TRAVEL --- .010 MIN
RELEASE FORCE --- -10 GRAMS MIN
DIFFERENTIAL TRAVEL --- -.002-.010
OVERTRAVEL --- -.050 MIN
FREE POSITION --- -.625 MAX

ELECTRICAL DATACONTACT ARRANGEMENT
SPDT

L112 10A 1/3HP 125 OR 250 VAC
1/2A 125 VDC, 1/4A 250 VDC
4A 125 VAC "L"

SCALE FULL

DO NOT SCALE PRINT

UNLESS OTHERWISE
NOTED

DIMENSIONS ARE IN INCHES

TOLERANCES ARE:

ONE PLACE	(.0)	±.030
TWO PLACE	(.00)	±.015
THREE PLACE	(.000)	±.005
ANGLES		±

WEIGHT



Mouser Electronics

Authorized Distributor

Click to View Pricing, Inventory, Delivery & Lifecycle Information:

[Honeywell:](#)

[V3-1119](#)