

MICRO SWITCH

A DIVISION OF MINNEAPOLIS-HONEYWELL REGULATOR COMPANY

PROBORT, ILLINOIS

FED. MFR. CODE 913

ACTUATOR - SWITCH

CATALOG LISTING

JM - 2

JM - 2

M

DRAWING
NUMBER

X

X

ISSUE
3

REPLACES

RELEASE NO. SR 9747

CHECK

REVISIONS

A CO17844

OMW 28 FEB 63

B CO18559

VDF 17 OCT 63

24 JULY 61

EAS

CHECK

24 JULY 61

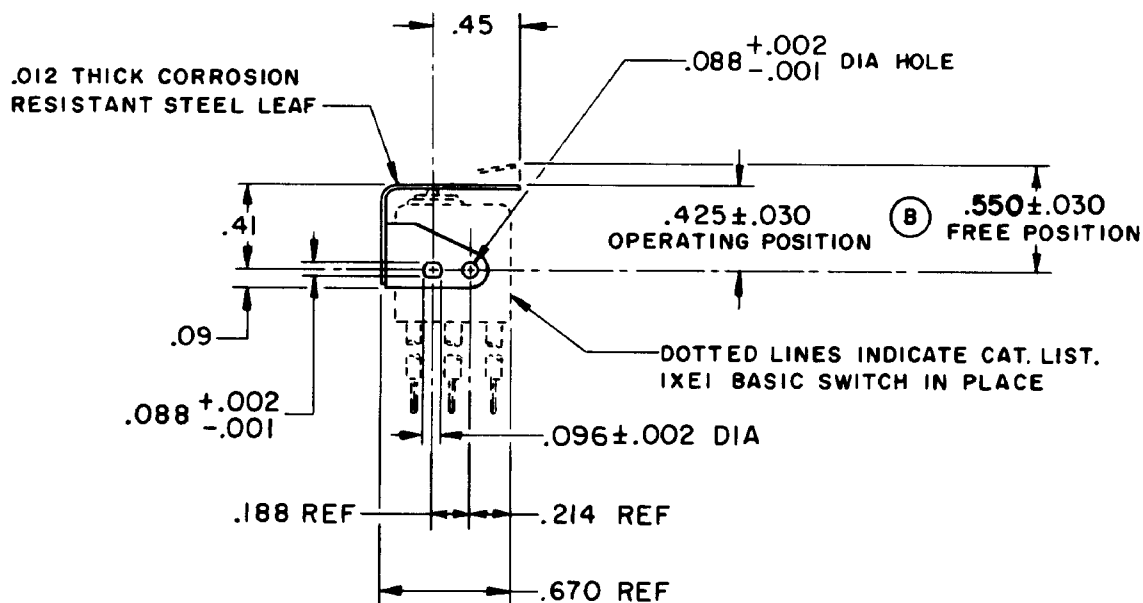
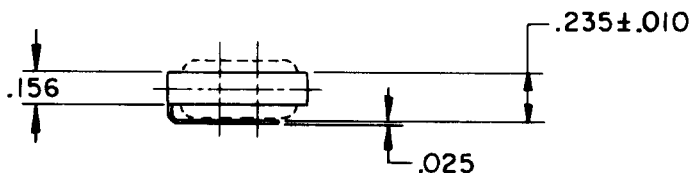
DAW

CHECK

0 MW 20 JUL 61

DRAWN

FO-50378



THIS DRAWING COVERS A PROPRIETARY ITEM AND IS THE PROPERTY OF MICRO SWITCH, A DIVISION OF MINNEAPOLIS-HONEYWELL REGULATOR CO. THIS DRAWING IS NOT TO BE COPIED OR USED WITHOUT THE APPROVAL OF MICRO SWITCH.

CHARACTERISTICS WITH IXE1 BASIC SWITCH INSTALLED

OPERATING FORCE — — — — — 21 OZ MAX

RELEASE FORCE — — — — — (A) — — — 3 OZ MIN

DIFFERENTIAL TRAVEL — — — — — .012 MAX

OVERTRAVEL — — — — — .009 MIN

ELECTRICAL DATA

CONTACT ARRANGEMENT

BREAK DISTANCE

SCALE FULL

DO NOT SCALE PRINT

UNLESS OTHERWISE SPECIFIED
DIMENSIONS ARE IN INCHES

TOLERANCES ARE:

ONE PLACE (.0) ± .030
TWO PLACE (.00) ± .015
THREE PLACE (.000) ± .005
ANGLES ±

WEIGHT

Mouser Electronics

Authorized Distributor

Click to View Pricing, Inventory, Delivery & Lifecycle Information:

[Honeywell:](#)

[JM-2](#)