

ACCESSORIES SELECTION GUIDE

Catalog Listing	Description	Drawing
PC-10182	Steel lockring (included with Port Style A, 1 x 4 terminals only) 22, 24, 26PC only	Figure 1
PC-15111	Cable retaining clip for large port Flow-Through sensor only	Figure 4
PC-15110	Single hole plastic bracket	Figure 3
PC-15015	Mounting bracket	Figure 6
PC-15132	Plastic Mounting bracket	Figure 5
20PCWHRC	Flow-Through wire harness and retaining clip	Figure 2
26PCBKT	Mounting bracket for large port Flow-Through sensor only	Figure 7
PC-15202	Mounting bracket for Luer Port	Figure 8
PC-15204	Mounting bracket for Straight Port	Figure 9

Unamplified

Figure 1 PC-10182  
Steel Lockring

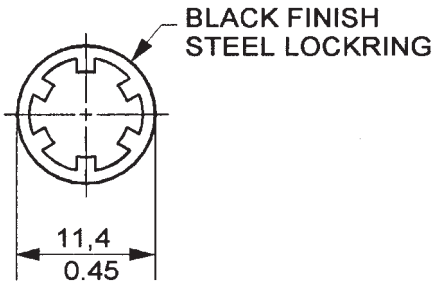


Figure 2 20PCWHRC  
Wire Harness and Retaining Clip

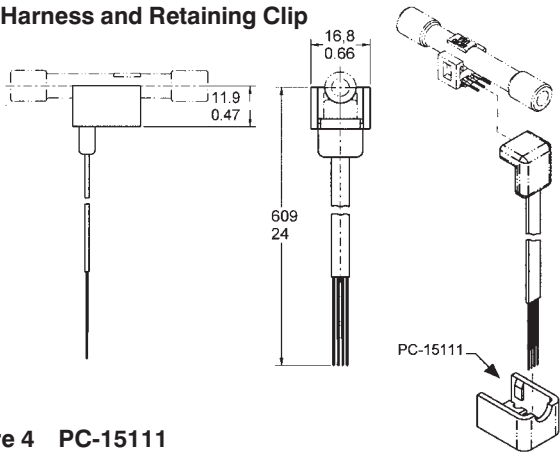


Figure 3 PC-15110  
Single Hole Plastic Bracket

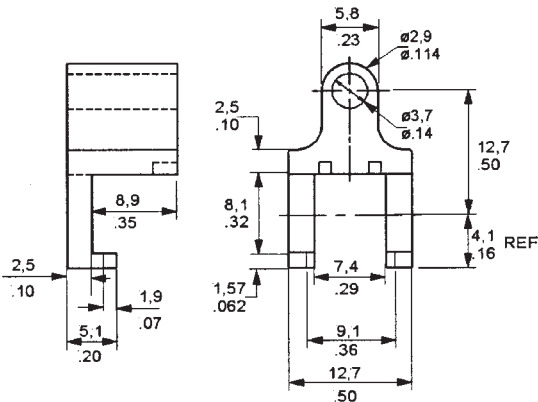


Figure 4 PC-15111  
Cable Retaining Clip

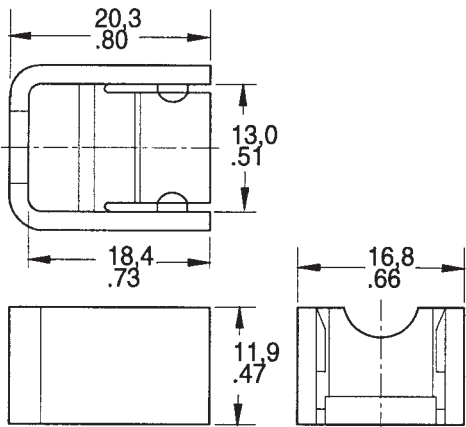
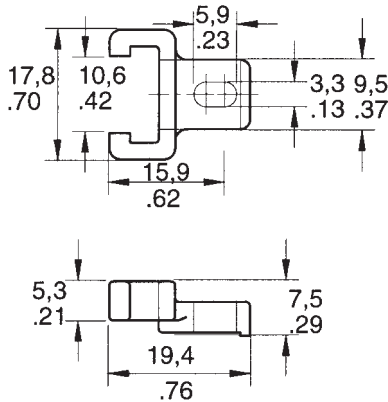


Figure 5 PC-15132  
Plastic Mounting Bracket

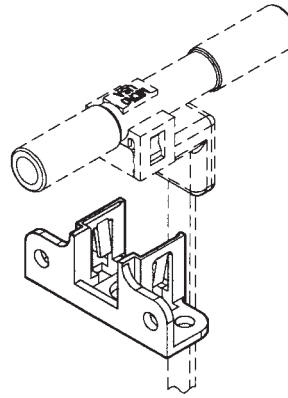
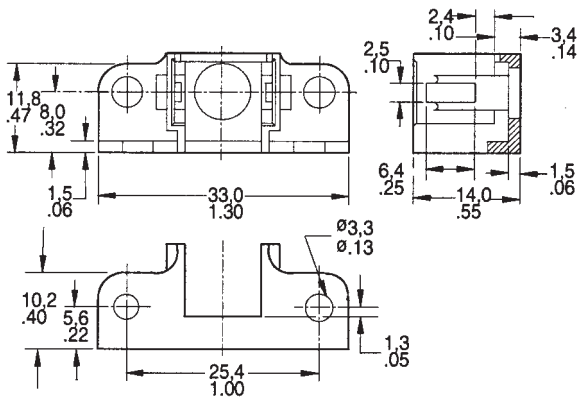


# Pressure Sensors

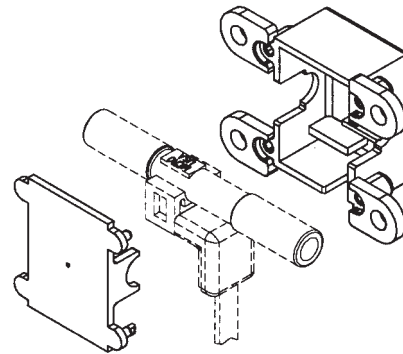
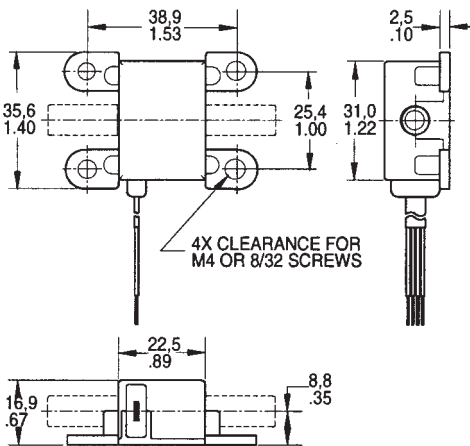
## Accessories

22/24/26PC Series

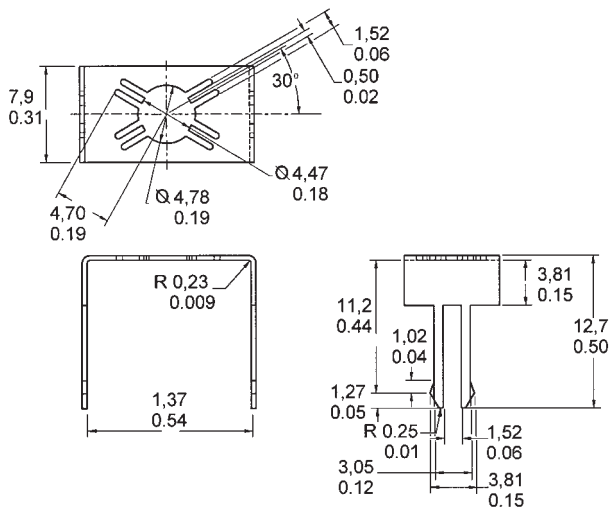
**Figure 6 PC-15015  
Mounting Bracket**



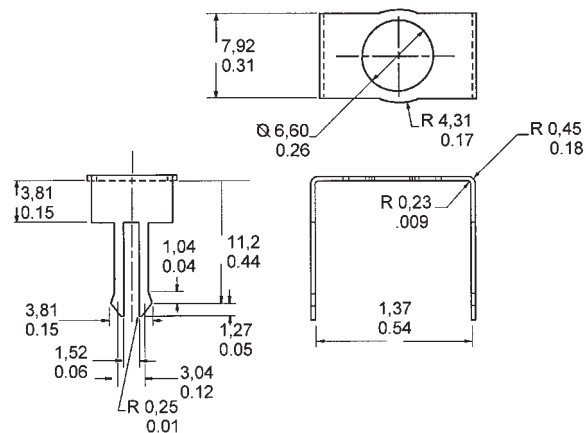
**Figure 7 26PCBKT  
For use with N, P Large Ports**



**Figure 8 PC-15202  
For use with C Luer Port**



**Figure 9 PC-15204  
For use with A Straight Port**



**Note:** PC-15202 and PC-15204 are Printed Circuit Board mountable and solderable; designed to be used in a .063 thick PC Board with a recommended mounting hole size of  $.125 \pm .005$  in.

# Mouser Electronics

Authorized Distributor

Click to View Pricing, Inventory, Delivery & Lifecycle Information:

Honeywell:

[PC-10182](#) [PC-15015](#) [PC-15204](#) [PC-15110](#)