

# MICRO SWITCH

FREEPORT ILLINOIS, U.S.A.  
A DIVISION OF HONEYWELL  
FED. MFG. CODE 91929

## SWITCH - BASIC

CATALOG LISTING

YZ-2R-A21

AWF2550

YZ-2R-A21

PAGE 1 OF 1

REPLACES

RELEASE NO. PR-3836

DRAWING  
NUMBER

12

ISSUE

CHECK

### REVISIONS

A	OBS DWG C082292
C S L	26 JAN 96
B	REINST PR22383
D L T	18 SEP 96
C	C093346
DLT	22 SEP 98
D	0000624
JAH	23 JUN 03
E	0015138
SPK	29 AUG 05

CHECK

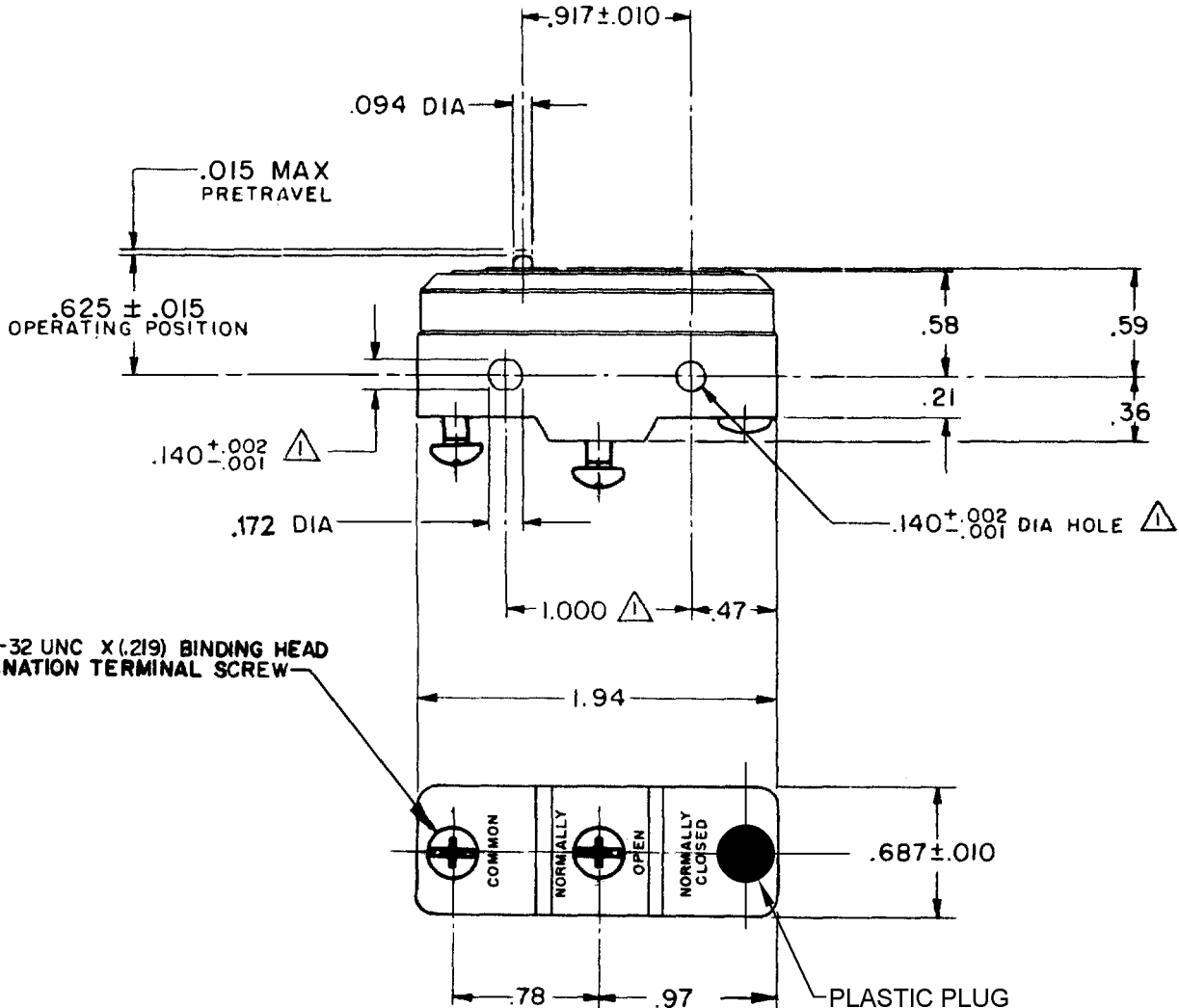
29 AUG 05

RJ

CHECK

18 SEP 96

RASTER



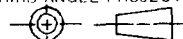
2X 6-32 UNC X (.219) BINDING HEAD  
COMBINATION TERMINAL SCREW

### NOTE

- 1 MOUNTING HOLES WILL ACCEPT PINS OR SCREWS  
OF .139 MAX DIA ON 1.000 ± .002 CENTERS

THIS DRAWING COVERS A PROPRIETARY ITEM AND IS THE PROPERTY OF MICRO SWITCH, A DIVISION OF HONEYWELL. THIS DRAWING IS NOT TO BE COPIED OR USED WITHOUT THE APPROVAL OF MICRO SWITCH.

THIRD ANGLE PROJECTION



### CHARACTERISTICS

OPERATING FORCE ----- 9-13 OZ

RELEASE FORCE ----- 4 OZ MIN

DIFFERENTIAL TRAVEL --- .0004 --- .0020

OVERTRAVEL ----- .005 MIN

### ELECTRICAL DATA

CONTACT ARRANGEMENT  
S P N O

CODE L96 15A-125, 250 OR 480 VAC  
1/8 HP-125 VAC; 1/4 HP-250 VAC  
1/2 A-125 VDC; 1/4 A-250 VDC

-L288-  
-L306-  
-L315-



EN 05  
EC



16A 250V ~ T85 5E4

SCALE FULL

DO NOT SCALE PRINT

### TOLERANCES

APPLY TO DESIGN UNITS. CONVERSIONS ARE ONLY FOR  
REFERENCE. UNLESS NOTED, TOLERANCES ARE ±

DIM.	TOL.	DIM.	TOL.
mm	mm/in	in	mm/in
NO PLACES	X	1/04	X X
ONE PLACE	X, X	0.4/018	X X X
TWO PLACES	X, X X	0.15/006	X X X X
THREE PLACES	X, X X X	0.38/015	X X X X X
ANGLES		0.13/005	

SI METRIC  
DESIGN UNITS ☐

US CUSTOMARY  
☒

WEIGHT .063 LB

# Mouser Electronics

Authorized Distributor

Click to View Pricing, Inventory, Delivery & Lifecycle Information:

[Honeywell:](#)

[YZ-2R-A21](#)