

**MICRO SWITCH**FREEPORT, ILLINOIS, U.S.A.  
A DIVISION OF HONEYWELL

FED. MFG. CODE 91929

**SWITCH-BASIC**

CATALOG LISTING

**WZ-2RDI9-DI****WZ-2RDI9-DI**

PAGE 1 OF 1

**M**DRAWING  
NUMBERISSUE  
7

REPLACES

RELEASE NO.

CHECK

## REVISIONS

A	CO15200
M B F	
4	FEB 66
B	CO
6	63526
D C S	
18	JUN 88
C	CO
7	77589
Y S M	
29	MAR 94
D	CO93346
DLT	
4	SEP 98

CHECK

LSD 14 FEB 66

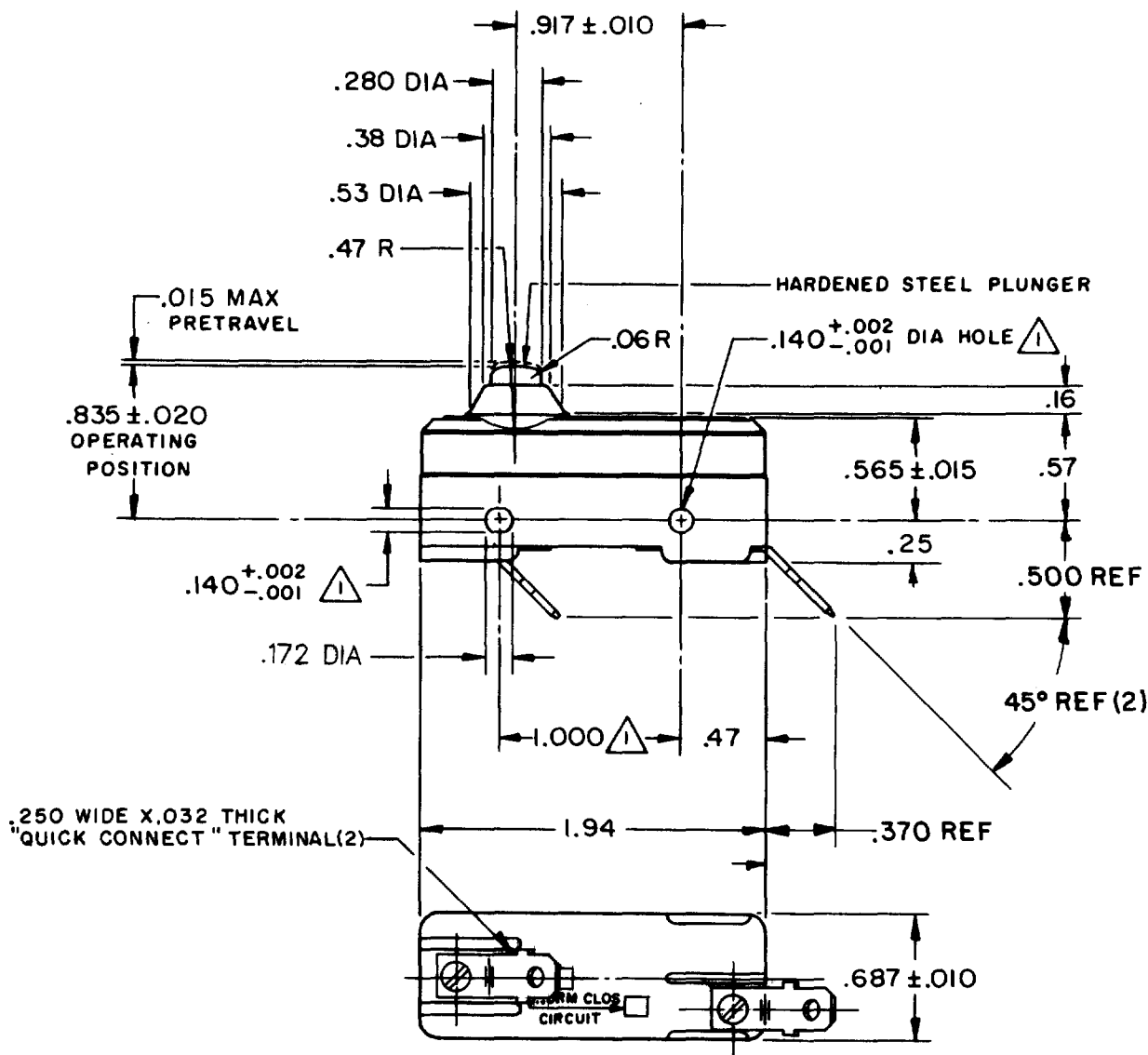
CHECK

M B F 4 FEB 66

FORMTEK

FO-50378

DRAWN



## NOTE

△ MOUNTING HOLES WILL ACCEPT PINS OR SCREWS  
OF .139 MAX DIA ON 1.000 ± .002 CENTERS

THIS DRAWING COVERS A PROPRIETARY ITEM AND IS THE PROPERTY OF MICRO SWITCH, A DIVISION OF HONEYWELL. THIS DRAWING IS NOT TO BE COPIED OR USED WITHOUT THE APPROVAL OF MICRO SWITCH.

**CHARACTERISTICS**

OPERATING FORCE — — — — 9-13 OZ  
RELEASE FORCE — — — — 4 OZ MIN  
DIFFERENTIAL TRAVEL — — .0004-.0020  
OVERTRAVEL — — — — .060 MIN

**ELECTRICAL DATA**

CONTACT ARRANGEMENT  
S P N C  
UL LISTED — FILE E12252  
CODE L88 15A-125, 250 OR 480 VAC  
1/3HP-125 OR 250 VAC  
1/2A-125 VDC; 1/4A-250 VDC  
L288  
L299  
L306  
16A 250V ~ T85 5E4

**SCALE FULL**

DO NOT SCALE PRINT

UNLESS OTHERWISE NOTED

DIMENSIONS ARE IN INCHES

**TOLERANCES ARE:**

ONE PLACE	(.0)	±.030
TWO PLACE	(.00)	±.015
THREE PLACE	(.000)	±.005
ANGLES		±

WEIGHT .056 LB

# Mouser Electronics

Authorized Distributor

Click to View Pricing, Inventory, Delivery & Lifecycle Information:

[Honeywell:](#)

[WZ-2RD19-D1](#)