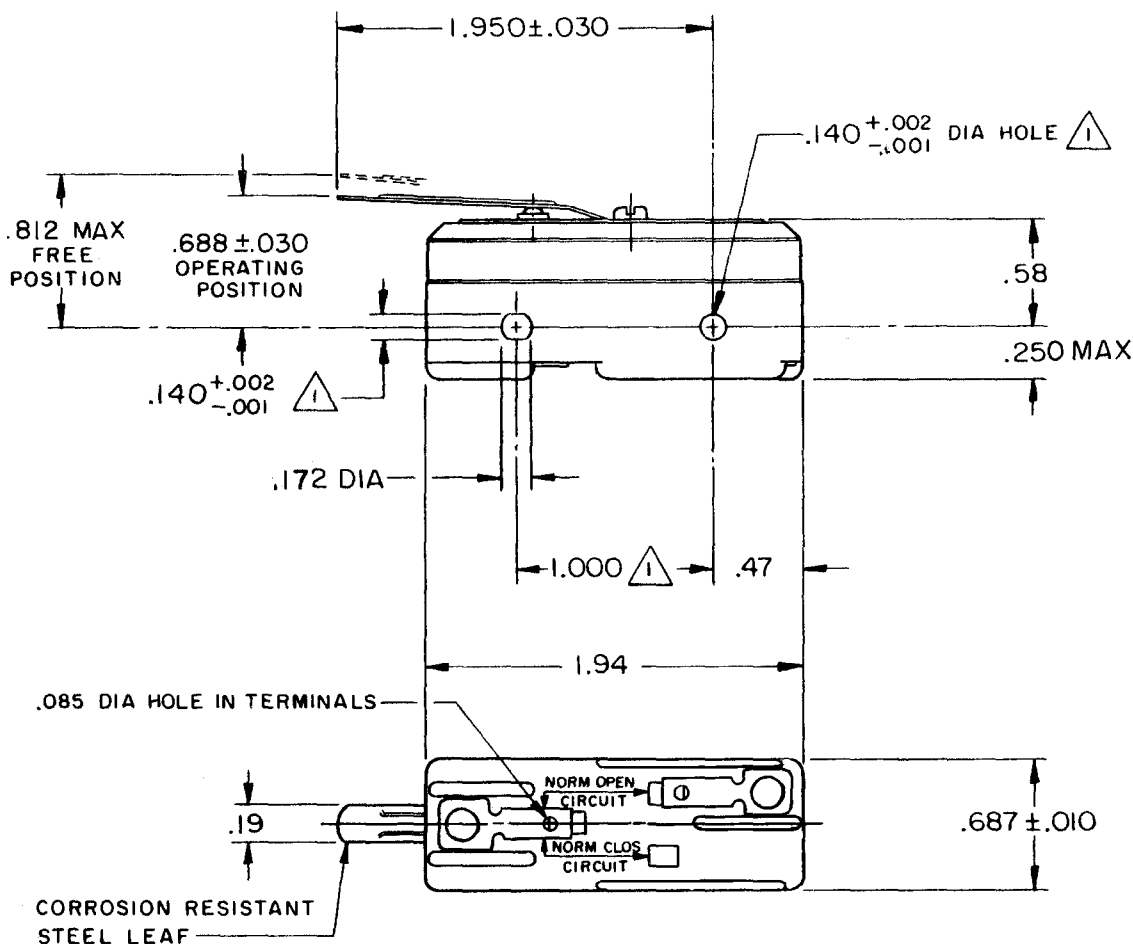


**MICRO SWITCH**FREEPORT, ILLINOIS, U.S.A.
A DIVISION OF HONEYWELL

FED. MFG. CODE 91929

SWITCH - BASIC

CATALOG LISTING

YZ-2RL**NOTE**

△ MOUNTING HOLES WILL ACCEPT PINS OR SCREWS
OF .139 MAX DIA ON 1.000 ± .002 CENTERS

THIS DRAWING COVERS A PROPRIETARY ITEM AND IS THE PROPERTY OF MICRO SWITCH, A DIVISION OF MINNEAPOLIS-HONEYWELL REGULATOR CO. THIS DRAWING IS NOT TO BE COPIED OR USED WITHOUT THE APPROVAL OF MICRO SWITCH.

CHARACTERISTICS

OPERATING FORCE ----- 5 OZ MAX

RELEASE FORCE ----- 1/2 OZ MIN

DIFFERENTIAL TRAVEL ----- .050 MAX

DO NOT OVERTRAVEL MORE THAN ----- .060

ELECTRICAL DATACONTACT ARRANGEMENT
S P N O

UNDERWRITERS' LAB. INC. LISTED RATING
-L96- 15 A - 125, 250, OR 480 VAC
1/2 A - 125 VDC; 1/4 A - 250 VDC
1/8 HP - 125 VAC; 1/4 HP - 250 VAC

-L288-
-L299-
-L306-



16A 250V ~ T85 5E4

SCALE FULL

DO NOT SCALE PRINT

UNLESS OTHERWISE
NOTED

DIMENSIONS ARE IN INCHES

TOLERANCES ARE:

ONE PLACE (.0) ± .030
TWO PLACE (.00) ± .015
THREE PLACE (.000) ± .005
ANGLES ±

WEIGHT .050 LB

YZ-2RL

PAGE 1 OF 1

MDRAWING
NUMBER**X12**

ISSUE

REPLACES

RELEASE NO.

CHECK

CHECK

29 AUG 63

DRAWN

CHECK

GCH 19 AUG 63

FORMTEK

FO-50376

REVISIONS

A	CO17410
GCH	19 AUG 63
B	CO46304
WJM	12 DEC 79
C	CO 58037
SMA	1 OCT 85
D	CO 77592
DAW	15 AUG 94
E	CO93346
DLT	22 SEP 98
F	CO 94212-K
DLT	5 NOV 99

Mouser Electronics

Authorized Distributor

Click to View Pricing, Inventory, Delivery & Lifecycle Information:

[Honeywell:](#)

[YZ-2RL](#)