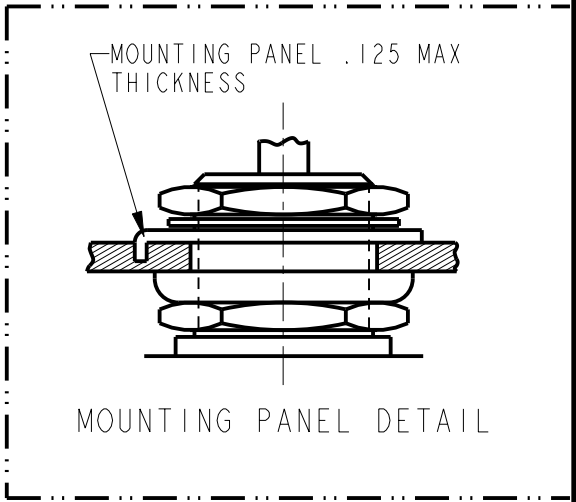
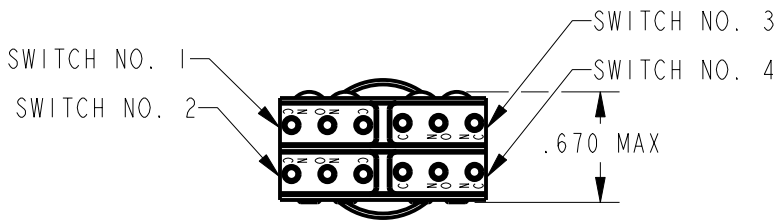
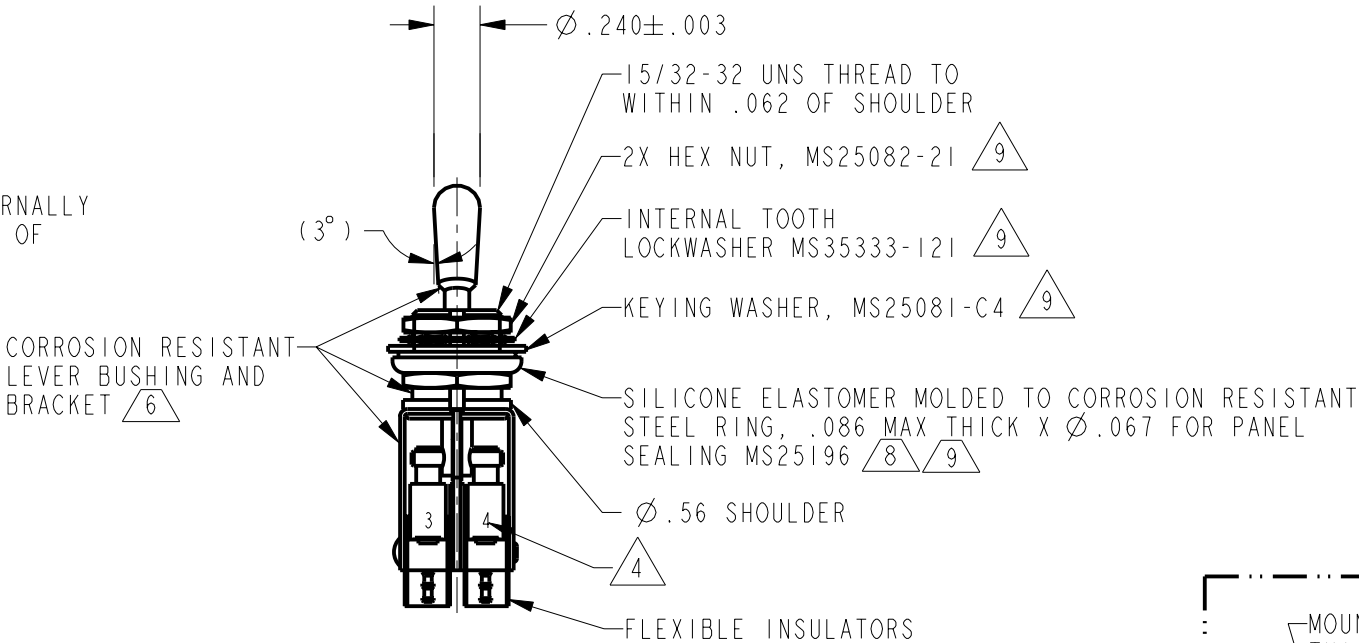
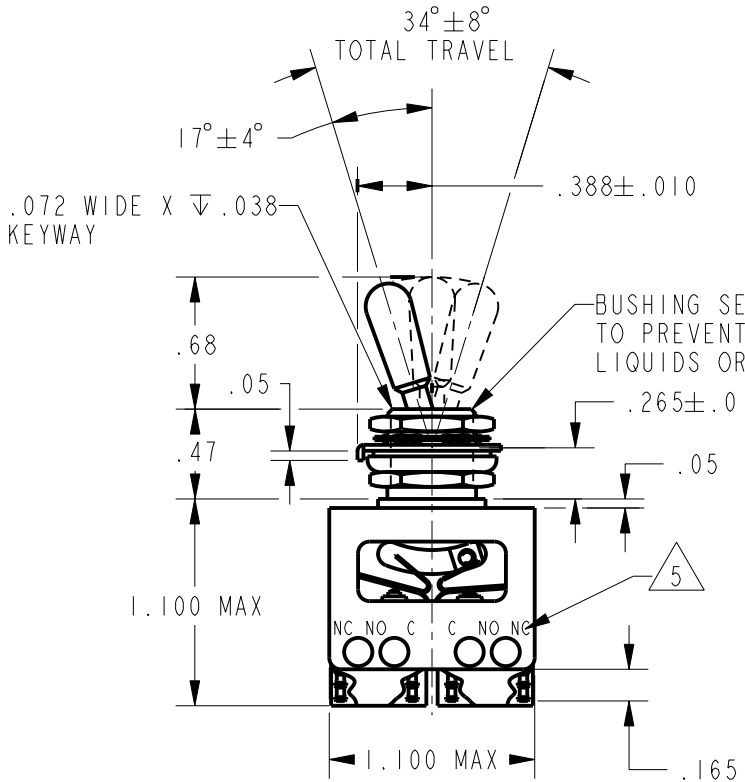


MICRO SWITCH  
a Honeywell Division  
FED. MFG. CODE 91929

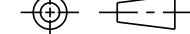


ASSEMBLY -  
TOGGLE SWITCH

CATALOG LISTING  
64AT315 SERIES CHART 1

CATALOG LISTING	KEYWAY POSITION		CENTER POSITION		OPPOSITE KEYWAY POSITION	
	C-NC	C-NO	C-NO	C-NC	C-NC	C-NO
64AT315-1	1,2	3,4	NONE	ALL	3,4	1,2
64AT315-3	1,2	3,4	NONE	NONE	3,4	1,2
64AT315-5	1,2 <sup>‡</sup>	3,4 <sup>‡</sup>	NONE	ALL	3,4	1,2
64AT315-7	1,2 <sup>‡</sup>	3,4 <sup>‡</sup>	NONE	ALL	3,4 <sup>‡</sup>	1,2 <sup>‡</sup>
* ASTERISK DENOTES MOMENTARY POSITION						



- NOTES
- 1 - UNIT INCLUDES 4X "SX" TYPE BASIC SWITCH
  - 2 - SWITCHES DO NOT NECESSARILY OPERATE SIMULTANEOUSLY
  - 3 - TERMINALS ARE PLATED FOR SOLDERING
  - 4 SWITCH NUMBERS MARKED ON END OF BASIC SWITCHES
  - 5 TERMINAL DESIGNATION STAMPED ON BOTH SIDES OF UNIT
  - 6 DULL FINISH ON LEVER AND BUSHING
  - 7 - WHEN LEVER IS MOVED OUT OF A MAINTAINED POSITION, IT WILL RETURN OF ITS OWN ACCORD TO THE ORIGINAL POSITION OR THE ADJACENT POSITION. THE TOGGLE LEVER MAY HANG UP BETWEEN THE TWO ADJACENT POSITIONS ONLY BY EXERTING CONSIDERABLE EFFORT
  - 8 FOR PANEL SEAL TO BE EFFECTIVE, MOUNTING HOLE IN PANEL SHOULD NOT EXCEED Ø.500
  - 9 HARDWARE FURNISHED ASSEMBLED WITH SWITCH OR IN PACKET PER MIL-PRF-8805
  - 10 - REPLACEMENT MOUNTING HARDWARE PACKET 15PA314-AT

THIS DRAWING COVERS A PROPRIETARY ITEM AND IS THE PROPERTY OF MICRO SWITCH, A DIVISION OF HONEYWELL. THIS DRAWING IS NOT TO BE COPIED OR USED WITHOUT THE APPROVAL OF MICRO SWITCH		THIRD ANGLE PROJECTION 
CHARACTERISTICS	ELECTRICAL DATA	SCALE FULL
	CONTACT ARRANGEMENT 4X S P D T	DO NOT SCALE PRINT
	L22  1A 125 VAC   	UNLESS OTHERWISE SPECIFIED TOLERANCES ARE
		ONE PLACE (.0) ±.030
		TWO PLACE (.00) ±.015
		THREE PLACE (.000) ±.005
		ANGLES ±
	WEIGHT .07 LB EST	

ANSI Y14.5M-1982 APPLIES

# Mouser Electronics

Authorized Distributor

Click to View Pricing, Inventory, Delivery & Lifecycle Information:

[Honeywell:](#)

[64AT315-1](#)