



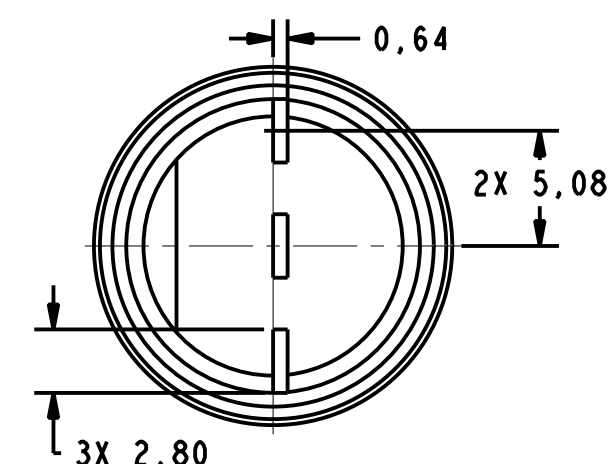
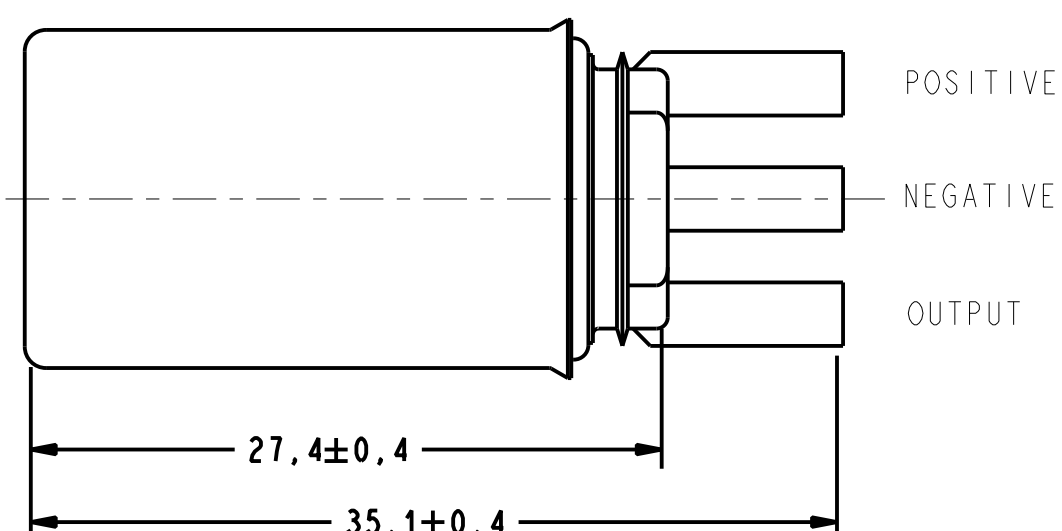
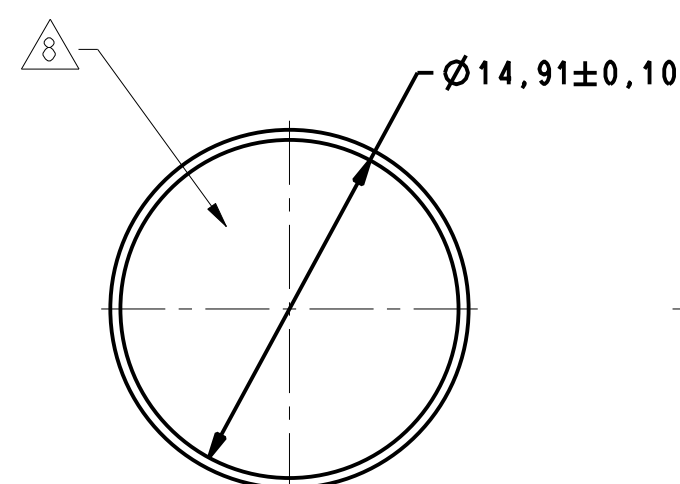
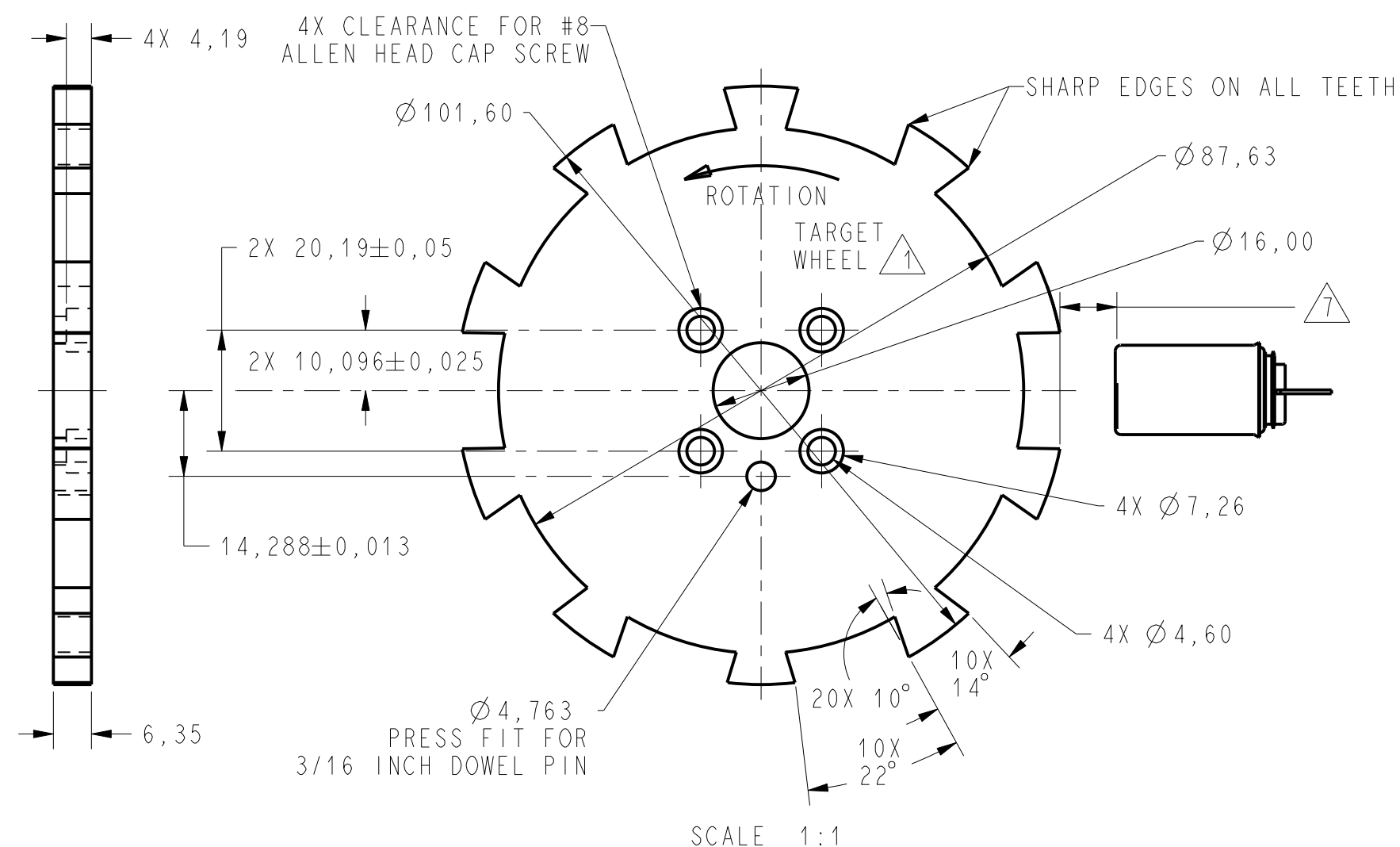
5  $\triangle 2$

SUPPLY VOLTAGE	+30V CONTINUOUS
VOLTAGE EXTERNALLY APPLIED TO OUTPUT	-0.5 TO +30V (OUTPUT HIGH)
OUTPUT CURRENT	40 mA SINKING
TEMP	150°C

## RECOMMENDED OPERATING CONDITIONS

PARAMETER	CONDITIONS	MIN	TYP	MAX	UNITS
OPERATING TEMPERATURE		- 40		+150	°C
SUPPLY VOLTAGE		4.5		24	VDC
SUPPLY CURRENT			10	20	mA
OUTPUT VOLTAGE	LOW OUTPUT			.6	VDC
OUTPUT CURRENT	LOW OUTPUT			20	mA
OUTPUT LEAKAGE CURRENT	HIGH OUTPUT			10	μA
RISE TIME	10% TO 90%			15	μS
FALL TIME	90% TO 10%			1.0	μS

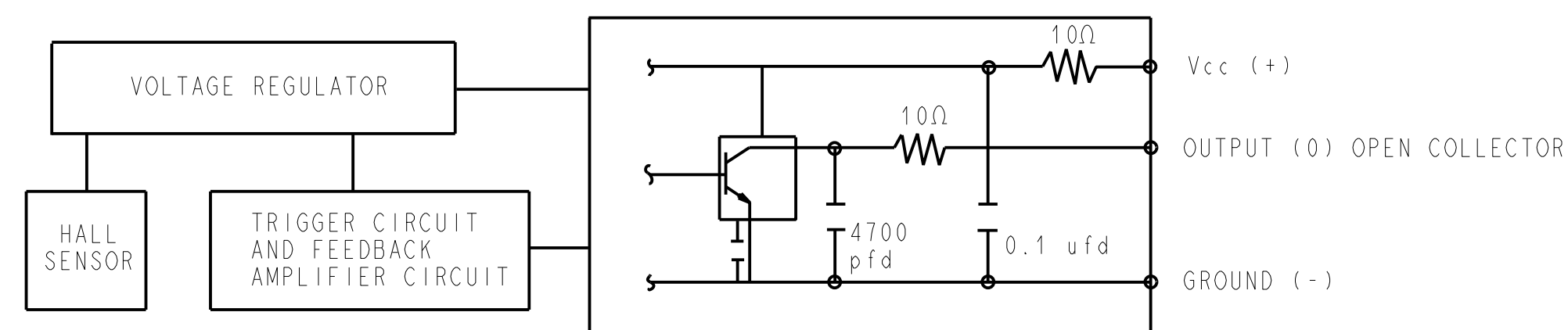
	LIMIT	CONDITIONS	UNITS
 OPERATE	$2.8^{\circ} \pm 1.5^{\circ}$	AIR GAP 0,13 - 2,03	mm
 RELEASE	$3.0^{\circ} \pm 2.50^{\circ}$	V SUPPLY 4.5-24	VOLTS
		TEMP -40 TO 150	DEG
		RPM 10 TO 3600	



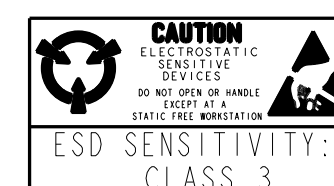
## NOTES

- NOTES

  - 1 TARGET SHOULD BE MADE OF C-1018 STEEL OR ENGINEERING APPROVED EQUIVALENT, ANNEAL AFTER MACHINING OR FORMING
  - 2 MAX LIMITS THAT SWITCH WILL WITHSTAND WITHOUT DAMAGE
  - 3 OPERATING SPECIFICATION IS BASED ON TARGET SHOWN IN FIGURE 1 AND WILL VARY WITH TARGET GEOMETRY
  - 4 OPERATE (DEGREES) IS THE ANGULAR DISTANCE FROM THE LEADING EDGE OF THE TOOTH TO THE CENTERLINE OF THE SENSOR
  - 5 RELEASE (DEGREES) IS THE ANGULAR DISTANCE FROM THE TRAILING EDGE OF THE TOOTH TO THE CENTERLINE OF THE SENSOR
  - 6 ELECTRICAL CHARACTERISTICS ARE GUARANTEED WITH MAX EXTERNAL LOAD CAPACITANCE < 550 pfd
  - 7 AIR GAP IS THE DISTANCE FROM SENSOR FACE TO TARGET
  - 8 CATALOG LISTING, DATE CODE AND SERIAL NUMBER LOCATED IN THIS AREA
  - 9 - RELIABILITY AND EMI PERFORMANCE IS BASED ON TS 060 234
  - 10 - FOR VALUE ADDED ASSEMBLY CONSIDERATIONS REFERENCE APPLICATION NOTE PK-80139



BLOCK DIAGRAM SHOWING CURRENT SINKING OUTPUT



THIS DRAWING COVERS A PROPRIETARY ITEM AND IS THE PROPERTY OF MICRO SWITCH, A DIVISION OF HONEYWELL. THIS DRAWING IS NOT TO BE COPIED OR USED WITHOUT THE APPROVAL OF MICRO SWITCH.

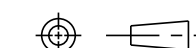
**MICRO SWITCH**  
a Honeywell Division

## GEARTOOTH SENSOR

CATALOG LISTING

1GP4001

THIRD ANGLE PROJECTION



SCALE 3:1

DO NOT SCALE PRINT

UNLESS OTHERWISE SPECIFIED  
TOLERANCES ARE

NO PLACE (0)  $\pm$  1 MM

ONE PLACE (0.0)  $\pm$  0.4 MM

ONE PLACE (0,0)  $\pm$  0,4 MM  
TWO PLACES (0,00)  $\pm$  0,15 MM

WEIGHT

# Mouser Electronics

Authorized Distributor

Click to View Pricing, Inventory, Delivery & Lifecycle Information:

[Honeywell:](#)

[1GP4001](#)