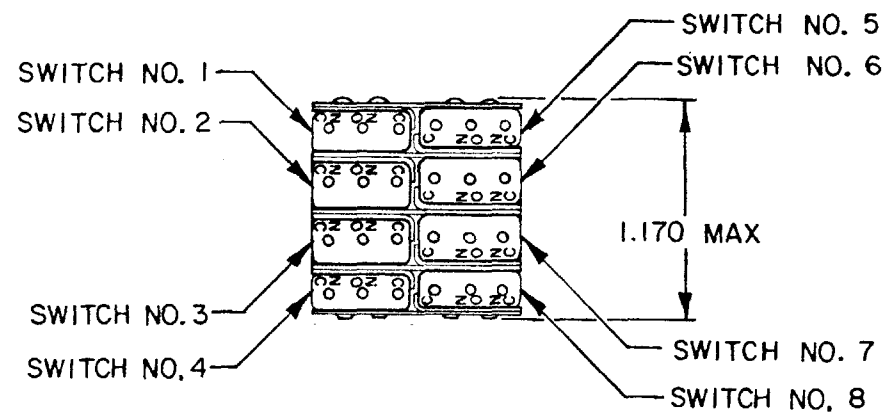
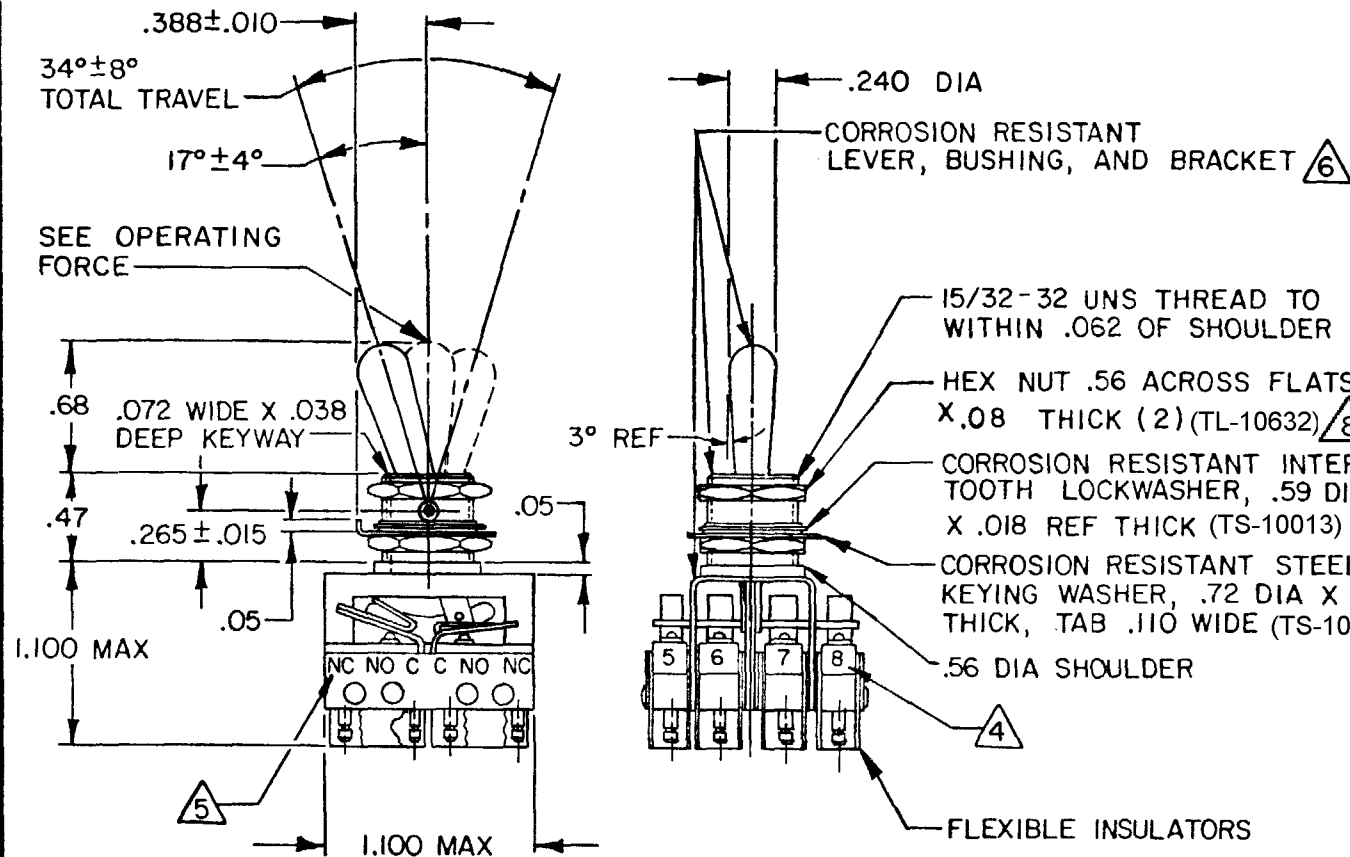


A	PR10653	
4	WJM	NOV 81
B	CO51596	
S	L B	JUNE 82
C	CO63228	
1	FSK	MAR 88
D	CO 63381	
0	J S	MAY 88
E	CO92352	
2	DLT	JUN 99
F	203961	
3	CSL	SEP 01
G	204763	
4	GJW	JAN 02

MICRO SWITCH
FREEPORT, ILLINOIS U.S.A.
A DIVISION OF HONEYWELL
FED. MFG. CODE 91928

ASSEMBLY - TOGGLE SWITCH

CATALOG LISTING
68AT34 SERIES
CHART 1



NOTES

- 1 - UNIT INCLUDES 23SX39-H58 TYPE (GOLD BASIC SWITCH CONTACTS) (8)
- 2 - SWITCHES DO NOT NECESSARILY OPERATE SIMULTANEOUSLY
- 3 - PLATED TERMINALS WILL ACCEPT "AMP INC." .058 DIA PIN RECEPTACLES
- 4 SWITCH NUMBERS MARKED ON END OF BASIC SWITCHES
- 5 TERMINAL DESIGNATION MARKED ON BOTH SIDES OF UNIT
- 6 DULL FINISH ON LEVER AND BUSHING
- 7 - WHEN LEVER IS MOVED OUT OF A MAINTAINED POSITION, IT WILL RETURN OF ITS OWN ACCORD TO THE ORIGINAL POSITION OR THE ADJACENT POSITION. THE TOGGLE LEVER MAY HANG UP BETWEEN THE TWO ADJACENT POSITIONS ONLY BE EXERTING CONSIDERABLE EFFORT
- 8 HARDWARE FURNISHED ASSEMBLED WITH SWITCH OR IN PACKET 15PA313-AT PER MIL-PRF-8805
- 9 - REPLACEMENT MOUNTING HARDWARE PACKET 15PA313-AT

THIS DRAWING COVERS A PROPRIETARY ITEM AND IS THE PROPERTY OF MICRO SWITCH, A DIVISION OF HONEYWELL. THIS DRAWING IS NOT TO BE COPIED OR USED WITHOUT THE APPROVAL OF MICRO SWITCH.

CHARACTERISTICS

OPERATING FORCE -
FORCE TO MOVE LEVER FROM ONE POSITION TO ANY ADJACENT POSITION, 1-5 LB.
APPLIED .125±.030 BELOW TOP OF LEVER

ELECTRICAL DATA

CONTACT ARRANGEMENT
S P D T (8)

30 VOLTS DC RATING
INDUCTIVE -----SEA LEVEL- 1/2 AMP
50,000 FT -- 1/2 AMP
RESISTIVE -----SEA LEVEL-- 1 AMP
50,000 FT --- 1 AMP
MAXIMUM INRUSH ----- 2 AMP

SCALE FULL

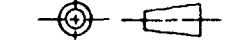
DO NOT SCALE PRINT

TOLERANCES
APPLY TO DESIGN UNITS. CONVERSIONS ARE ONLY FOR REFERENCE. UNLESS NOTED: TOLERANCES ARE 2

DIM.	TOL.	DIM.	TOL.
mm	mm/in	in	mm/in
NO PLACES	X	1/32	
ONE PLACE	X.X	0.4/0.18	X.X
TWO PLACES	X.XX	0.154/0.008	X.XX
THREE PLACES	X.XXX		X.XXX
ANGLES			

DESIGN UNITS ☐ SI METRIC ☒ US CUSTOMARY

THIRD ANGLE PROJECTION



WEIGHT .09 LB APPROX

Mouser Electronics

Authorized Distributor

Click to View Pricing, Inventory, Delivery & Lifecycle Information:

[Honeywell:](#)

[68AT34-1](#)