

REV	DOCUMENT	CHANGED BY	CHECK
5	0033839	PRS 13SEP07	CMH

XSC

SERIES

DESIGNATES PRESSURE

L - LOW PRESSURE (IN H₂O)
- NO DESIGNATION (PSI)

PRESSURE RANGE

04, 10 IN H₂O
0.3, 01, 05, 15, 30,
60, 100, 150 PSI

ACCURACY GRADE

C - COMMERCIAL GRADE
H - HIGH GRADE

PORT OPTION

F - AXIAL (GAGE ONLY)
- NO PORT

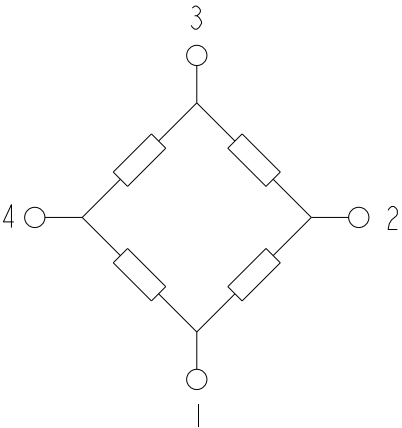
PRESSURE REFERENCE

G - GAGE
D - DIFFERENTIAL

CATALOG LISTINGS
XSCL04DC
④
XSCL10DC
⑤
XSC01DH
④
④
XSC100DH
⑤

XSC G AND D STYLES (GAGE/DIFFERENTIAL)	PERFORMANCE AT 25°C AND 12±0.01 V _{dc} (UNLESS OTHERWISE STATED)									
	C-GRADE			H-GRADE			UNITS	FULL SCALE PRESSURE PSI	PROOF PRESSURE PSI	BURST PRESSURE PSI
	MIN	NOM	MAX	MIN	NOM	MAX				
OFFSET (0 IN H ₂ O)	-1	0	1	-0.5	0	+0.5	mV			
4 IN H ₂ O SPAN (P ₁ >P ₂)	23	25	27	N/A	N/A	N/A	mV	4 IN H ₂ O	3	5
10 IN H ₂ O SPAN (P ₁ >P ₂)	19	20	21	19.5	20	20.5	mV	10 IN H ₂ O	3	5
0.3 PSI SPAN (P ₁ >P ₂)	19	20	21	19.5	20	20.5	mV	0.3	3	5
1 PSI SPAN (P ₁ >P ₂)	17	18	19	17.8	18	18.2	mV	1	3	5
5 PSI SPAN (P ₁ >P ₂)	57	60	63	59	60	61	mV	5	15	25
15 PSI SPAN (P ₁ >P ₂)	85	90	95	89	90	91	mV	15	45	75
30 PSI SPAN (P ₁ >P ₂)	85	90	95	89	90	91	mV	30	90	150
60 PSI SPAN (P ₁ >P ₂)	85	90	95	89	90	91	mV	60	180	300
100 PSI SPAN (P ₁ >P ₂)	95	100	105	99	100	101	mV	100	250	400
150 PSI SPAN (P ₁ >P ₂)	85	90	95	89	90	91	mV	150	250	400
COMBINED LINEARITY AND HYSTERESIS ④	---	0.25	1	-0.5	---	0.5	%SPAN			
NULL SHIFT OVER TEMPERATURE (0-25, 25-70°C) ②③	-1	---	1	-0.5	---	0.5	mV			
SPAN SHIFT OVER TEMPERATURE (0-25, 25-70°C) ②③	-2	---	2	-1	---	1	%SPAN			

GENERAL OPERATING CHARACTERISTICS	ALL PRESSURES AND GRADES			
	MIN	NOM	MAX	UNITS
EXCITATION VOLTAGE	3	12	16	V _{dc}
INPUT RESISTANCE	5	---	---	K-OHMS
OUTPUT RESISTANCE	---	3	---	K-OHMS
OPERATING TEMPERATURE	-25	25	85	°C
STORAGE TEMPERATURE	-40	---	125	°C

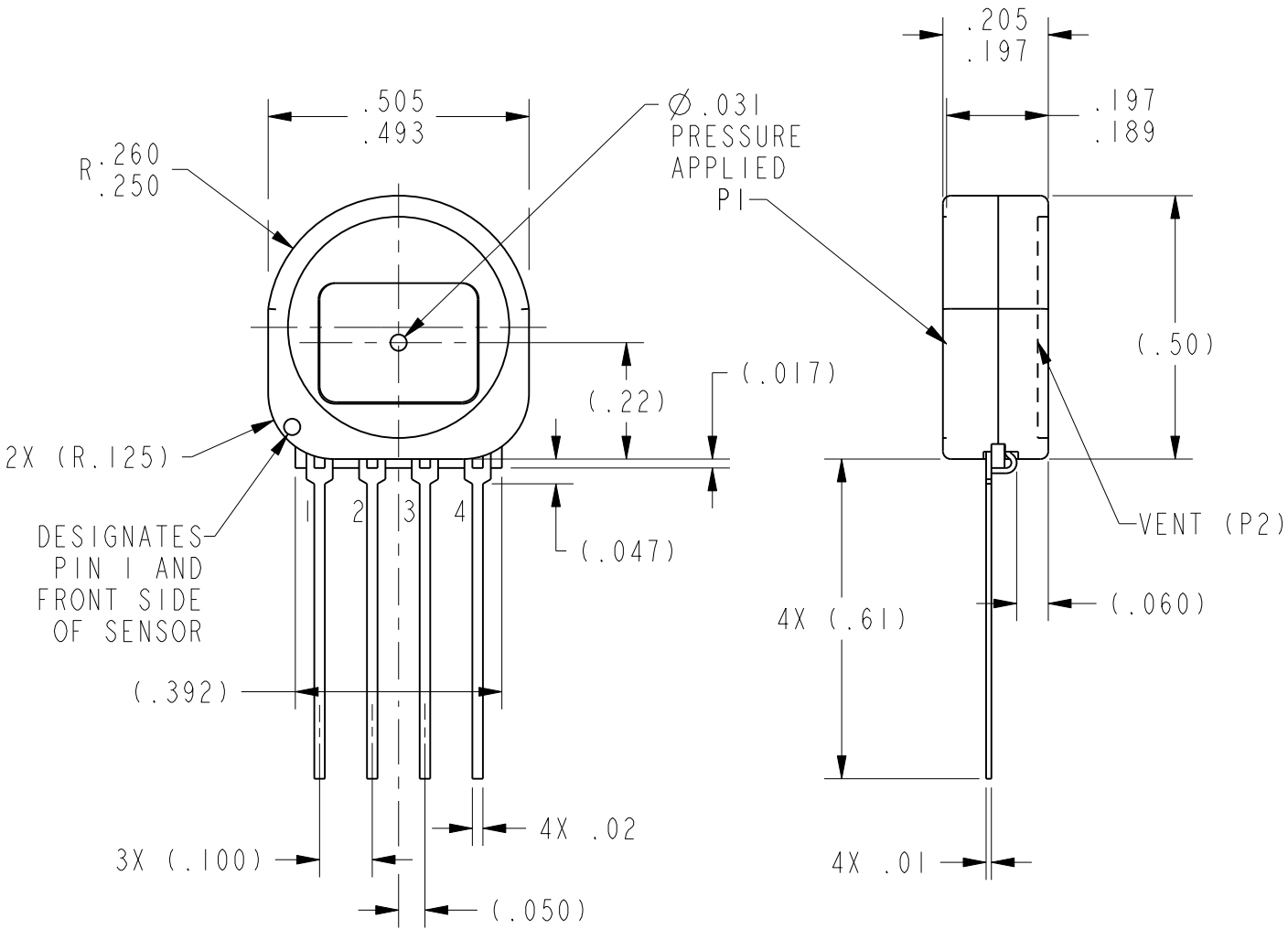


EQUIVALENT CIRCUIT

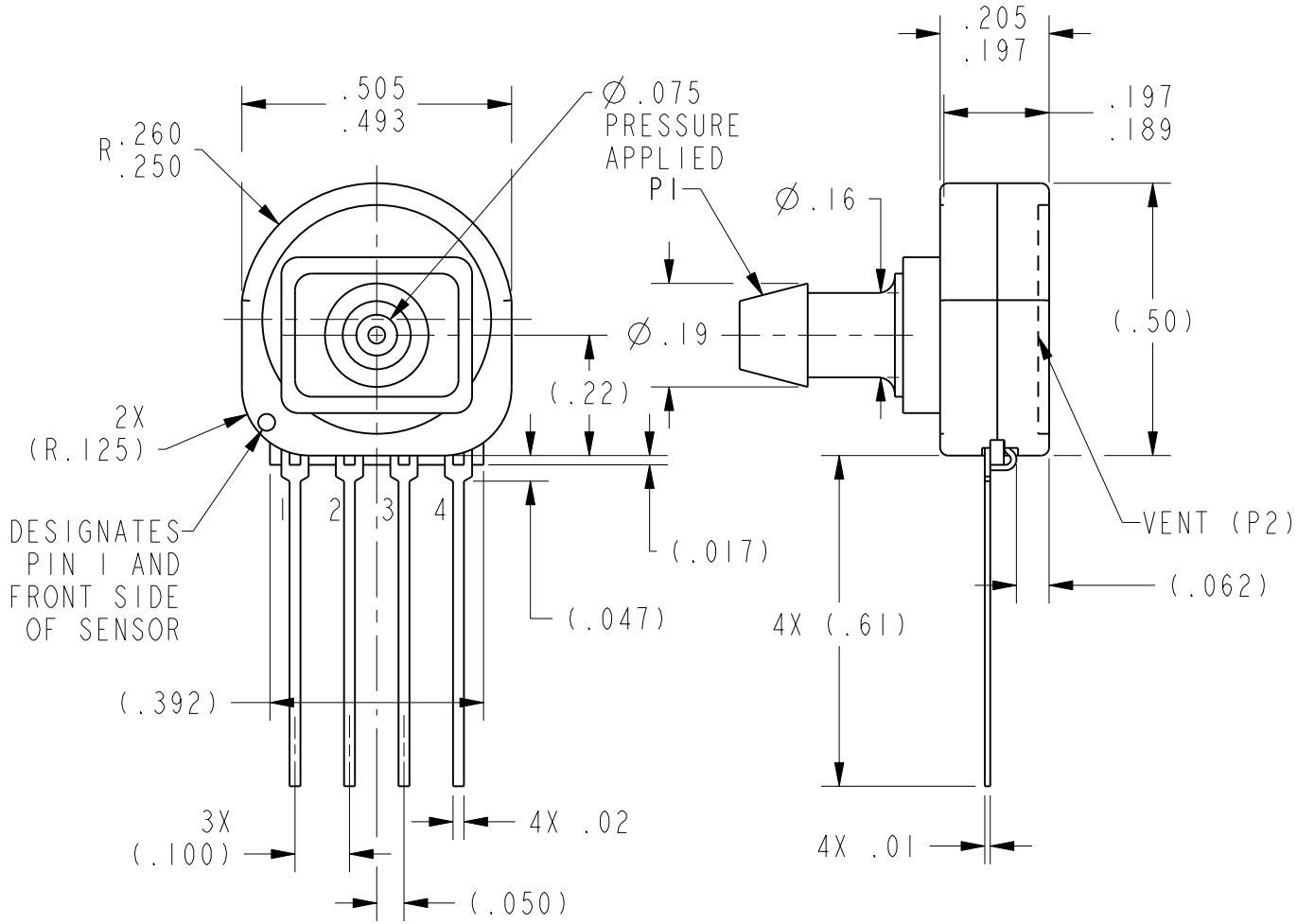
PIN OUT	
1	-V EXCITATION
2	+ OUTPUT SIGNAL
3	+ V EXCITATION
4	- OUTPUT SIGNAL

NOTES

- 1 - SPAN IS THE ALGEBRAIC DIFFERENCE BETWEEN THE OUPUT AT FULL SCALE PRESSURE AND THE OFFSET OUTPUT
- ② TEMPERATURE ERROR IS CALCULATED WITH RESPECT TO 25°C
- ③ THE L04 LISTING HAS A TEMPERATURE SHIFT RANGE FROM 0°C TO 25°C AND 25°C TO 50°C
- ④ LINEARITY IS MEASURED AT 1/2 FULL SCALE PRESSURE USING BEST STRAIGHT LINE FIT
- 5 - THE OUTPUT OF THE SENSOR IS PROPORTIONAL, RATIOMETRIC, TO THE EXCITATION VOLTAGE.
ALL SPECIFICATIONS WILL NOMINALLY BE CHANGED BY THE RATIO OF V_{EXCITATION}/12.0 V_{dc}
- 6 - LIMIT SOLDERING TO 315°C FOR LESS THAN 10 SECONDS
- 7 - POSITIVE PRESSURE APPLIED TO PORT 1 > PORT 2 RESULTS IN POSITIVE GOING OUTPUT
- 8 - INPUT MEDIA RESTRICTED TO DRY GASES ONLY



D HOUSING



GF HOUSING

UNLESS OTHERWISE SPECIFIED TOLERANCES ARE: NO PLACE X ±.040 ±1 ONE PLACE .X ±.030 ±0,4 TWO PLACE .XX ±.015 ±0,15 THREE PLACE .XXX ±.005 ± ANGLES ± RAW MATERIAL-COMMERCIAL STANDARD			DRAWN	TRF	04APR01	Honeywell			
			CHECK	SAV	04APR01				
THIRD ANGLE PROJECTION			THIS DRAWING COVERS A PROPRIETARY ITEM AND IS THE PROPERTY OF HONEYWELL. THIS DRAWING IS NOT TO BE COPIED OR USED WITHOUT THE PERMISSION OF HONEYWELL.			TITLE PRESSURE SENSOR			
			DIMENSIONS ARE TO BE MET BEFORE PROTECTIVE COATINGS ARE APPLIED			SIZE C	DWG TYPE I	DRAWING NAME XSC G D SERIES CHART 1	REV 5
			3D PTC	ASME Y14.5M-1994		SCALE 3:1	WEIGHT	SHEET 1 OF 1	

Mouser Electronics

Authorized Distributor

Click to View Pricing, Inventory, Delivery & Lifecycle Information:

[Honeywell:](#)

[XSC100DH](#)