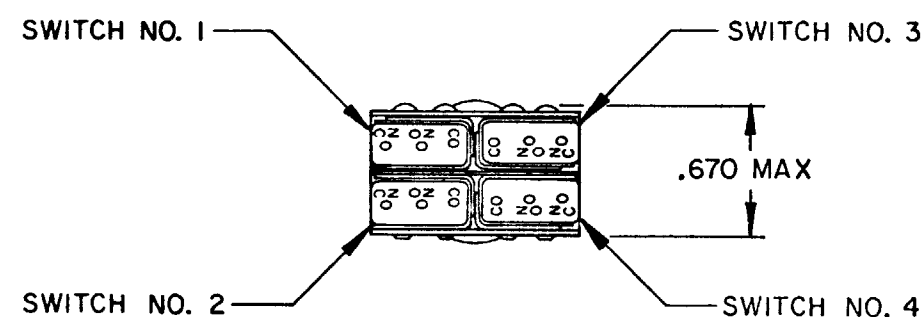
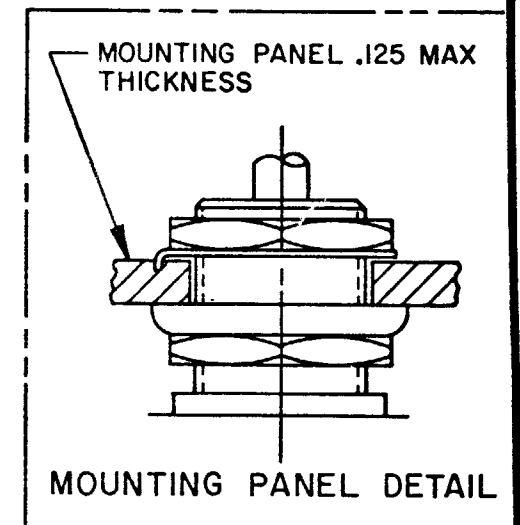
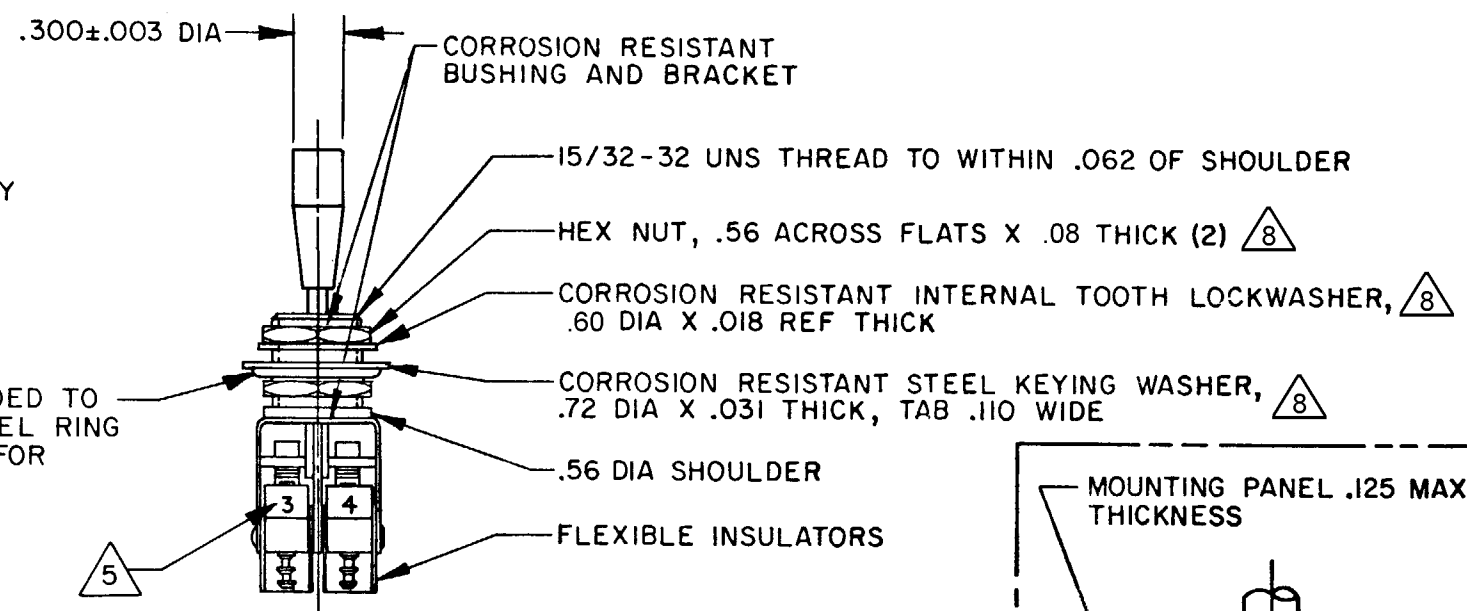
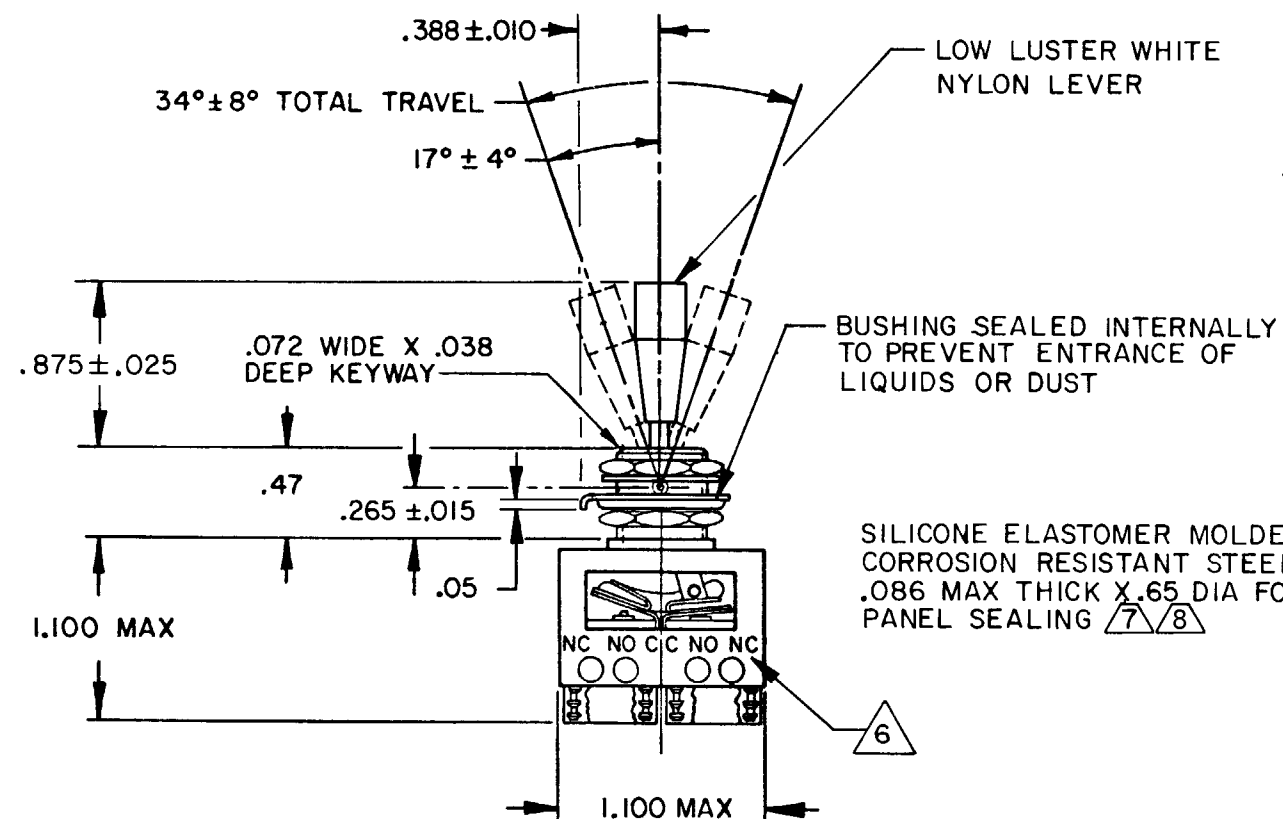


CATALOG LISTING	KEYWAY POSITION		CENTER POSITION		OPPOSITE KEYWAY POSITION	
	C-NC	C-NO	C-NO	C-NC	C-NC	C-NO
64AT9-1	1 & 2	3 & 4	NONE	ALL	3 & 4	1 & 2

O-50378-003		DRAWN		MASTER	
J A P 18 JUL 80		CHECK	C E B	21 JULY 80	CHECK
A		PR-8977		J A P 18 JUL 80	
B		J A P 18 JULY 80		C	
C		C063228		D	
D		TSK 25 MAR 88		E	
E		C072702		F	
F		L J F 7 JUN 92		G	
G		C092352		H	
H		D L T 23 JUN 99		I	
I		205420		J	
J		C S L 24 APR 02		K	
K				L	
L				M	
M				N	
N				O	
O				P	
P				Q	
Q				R	
R				S	
S				T	
T				U	
U				V	
V				W	
W				X	
X				Y	
Y				Z	
Z				AA	
AA				AB	
AB				AC	
AC				AD	
AD				AE	
AE				AF	
AF				AG	
AG				AH	
AH				AI	
AI				AJ	
AJ				AK	
AK				AL	
AL				AM	
AM				AN	
AN				AO	
AO				AP	
AP				AQ	
AQ				AR	
AR				AS	
AS				AT	
AT				AU	
AU				AV	
AV				AW	
AW				AX	
AX				AY	
AY				AZ	
AZ				BA	
BA				BB	
BB				BC	
BC				BD	
BD				BE	
BE				BF	
BF				BG	
BG				BH	
BH				BI	
BI				BJ	
BJ				BK	
BK				BL	
BL				BM	
BM				BN	
BN				BO	
BO				BP	
BP				BQ	
BQ				BR	
BR				BS	
BS				BT	
BT				BU	
BU				BV	
BV				BW	
BW				BX	
BX				BY	
BY				BZ	
BZ				CA	
CA				CB	
CB				CC	
CC				CD	
CD				CE	
CE				CF	
CF				CG	
CG				CH	
CH				CI	
CI				CJ	
CJ				CK	
CK				CL	
CL				CM	
CM				CN	
CN				CO	
CO				CP	
CP				CQ	
CQ				CR	
CR				CS	
CS				CT	
CT				CU	
CU				CV	
CV				CW	
CW				CX	
CX				CY	
CY				CZ	
CZ				DA	
DA				DB	
DB				DC	
DC				DD	
DD				DE	
DE				DF	
DF				DG	
DG					



- NOTES**
- 1 UNIT INCLUDES "SX" TYPE BASIC SWITCH (4) (MEETS REQUIREMENTS OF MIL-S-6743)
 - 2 SWITCHES DO NOT NECESSARILY OPERATE SIMULTANEOUSLY
 - 3 TERMINALS ARE PLATED FOR SOLDERING
 - 4 DULL FINISH ON BUSHING
 - 5 SWITCH NUMBERS MARKED ON END OF BASIC SWITCHES
 - 6 TERMINAL DESIGNATION MARKED ON BOTH SIDES OF UNIT
 - 7 FOR PANEL SEAL TO BE EFFECTIVE MOUNTING HOLE IN PANEL SHOULD NOT EXCEED .500 DIA
 - 8 HARDWARE FURNISHED ASSEMBLED WITH SWITCH OR IN PACKET PER MIL-PRF-8805

THIS DRAWING COVERS A PROPRIETARY ITEM AND IS THE PROPERTY OF MICRO SWITCH, A DIVISION OF MINNEAPOLIS-HONEYWELL REGULATOR CO. THIS DRAWING IS NOT TO BE COPIED OR USED WITHOUT THE APPROVAL OF MICRO SWITCH.

CHARACTERISTICS	ELECTRICAL DATA	SCALE	FULL
OPERATING FORCE-- 1 LB MIN-5 LB MAX APPLIED .125±.030 BELOW TOP OF LEVER	CONTACT ARRANGEMENT S P D T (4)	DO NOT SCALE PRINT	
		UNLESS OTHERWISE NOTED DIMENSIONS ARE IN INCHES TOLERANCES ARE:	
		ONE PLACE (.0) ±.030 TWO PLACE (.00) ±.015 THREE PLACE (.000) ±.005 ANGLES ±	
		WEIGHT .07 LB EST	

ELECTRICAL RATINGS			
LOAD	SEA LEVEL		50,000 FT
	28 Vdc	115 Vac, 60 Hz	28 Vdc
	(AMPERES)	(AMPERES)	(AMPERES)
RESISTIVE	7	7	4
INDUCTIVE	4	7	2.5

Mouser Electronics

Authorized Distributor

Click to View Pricing, Inventory, Delivery & Lifecycle Information:

[Honeywell:](#)

[64AT9-1](#)