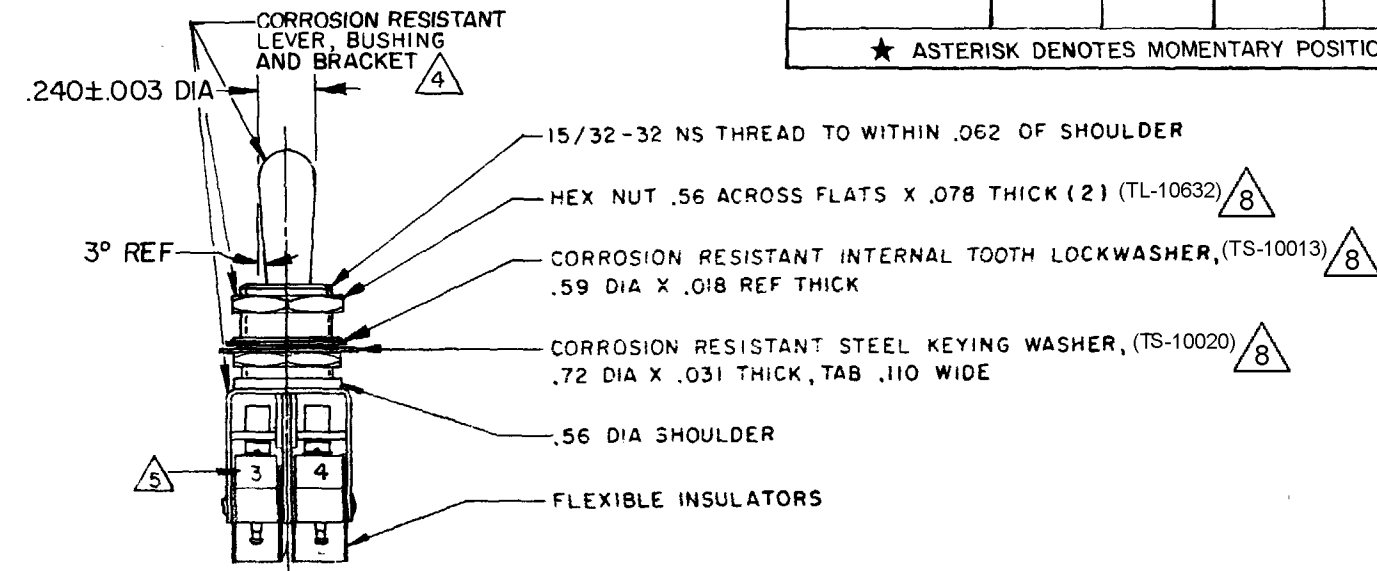
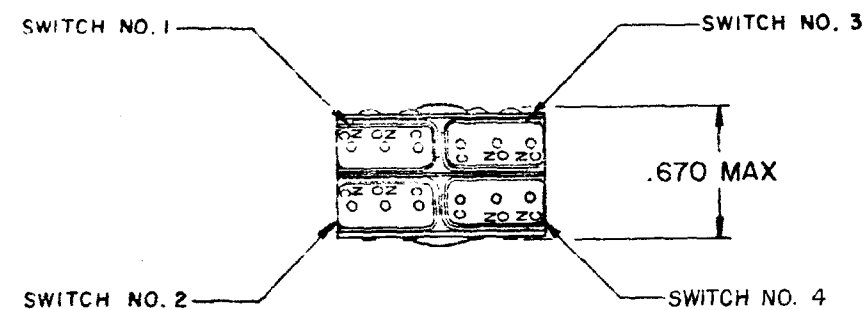
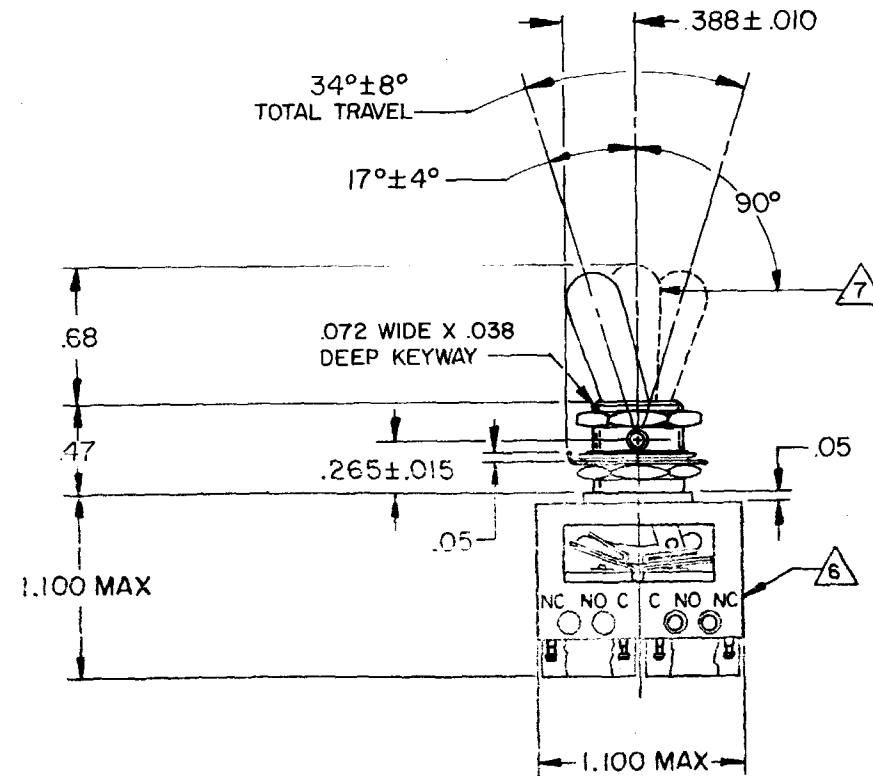


CATALOG LISTING	KEYWAY POSITION		CENTER POSITION		OPPOSITE KEYWAY POSITION	
	C-NC	C-NO	C-NO	C-NC	C-NC	C-NO
64AT33-1	1 & 2	3 & 4	NONE	ALL	3 & 4	1 & 2
64AT33-3	1 & 2	3 & 4	NONE	NONE	3 & 4	1 & 2
64AT33-5	1 & 2 ★	3 & 4 ★	NONE	ALL	3 & 4	1 & 2
64AT33-7	1 & 2 ★	3 & 4 ★	NONE	ALL	3 & 4 ★	1 & 2 ★
64AT33-514	1 & 2	3 & 4	NONE	ALL	3 & 4 ★	1 & 2 ★

★ ASTERISK DENOTES MOMENTARY POSITION

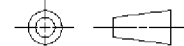


NOTES:

- 1 - UNIT INCLUDES 24K SOLID GOLD CONTACT "SX" TYPE BASIC SWITCH (4) (MEETS REQUIREMENTS OF MIL-PRF-8805)
- 2 - SWITCHES DO NOT NECESSARILY OPERATE SIMULTANEOUSLY
- 3 - PLATED TERMINALS WILL ACCEPT AMPS INC .058 DIA PIN RECEPTACLES
- 4 - DULL FINISH ON LEVER AND BUSHING
- 5 - SWITCH NUMBERS STAMPED ON END OF BASIC SWITCHES
- 6 - TERMINAL DESIGNATION STAMPED ON BOTH SIDES OF UNIT
- 7 - 1 - 5 LB APPLIED .125±.030 BELOW TOP OF LEVER
- 8 - HARDWARE FURNISHED ASSEMBLED WITH SWITCH OR IN PACKET 15PA313-AT PER MIL-PRF-8805
- 9 - REPLACEMENT MOUNTING HARDWARE PACKET 15PA313-AT

THIS DRAWING COVERS A PROPRIETARY ITEM AND IS THE PROPERTY OF MICRO SWITCH, A DIVISION OF HONEYWELL. THIS DRAWING IS NOT TO BE COPIED OR USED WITHOUT THE APPROVAL OF MICRO SWITCH.

THIRD ANGLE PROJECTION



SCALE	FULL
-------	------

DO NOT SCALE PRINT

UNLESS OTHERWISE SPECIFIED
TOLERANCES ARE

ONE PLACE (.0) $\pm .030$

TWO PLACE (.00) $\pm .015$

THREE PLACE (.000) +.005

ANGLES \pm

WEIGHT .07 LB EST

CHARACTERISTICS

OPERATING FORCE ----- Δ ₇

DIFFERENTIAL FORCE

RELEASE FORCE

PRETRAVEL

DIFFERENTIAL TRAVEL

OVERTRAVEL

FREE POSITION

ELECTRICAL DATA

CONTACT ARRANGEMENT

SPDT (4)

DETAIL RATING CHART

[illegible]

NOTE: INDUCTIVE LOADS: 28 VDC USE AN3179-6 INDUCTOR, 115 VAC AT 75% PF

Mouser Electronics

Authorized Distributor

Click to View Pricing, Inventory, Delivery & Lifecycle Information:

[Honeywell:](#)

[64AT33-7](#)