

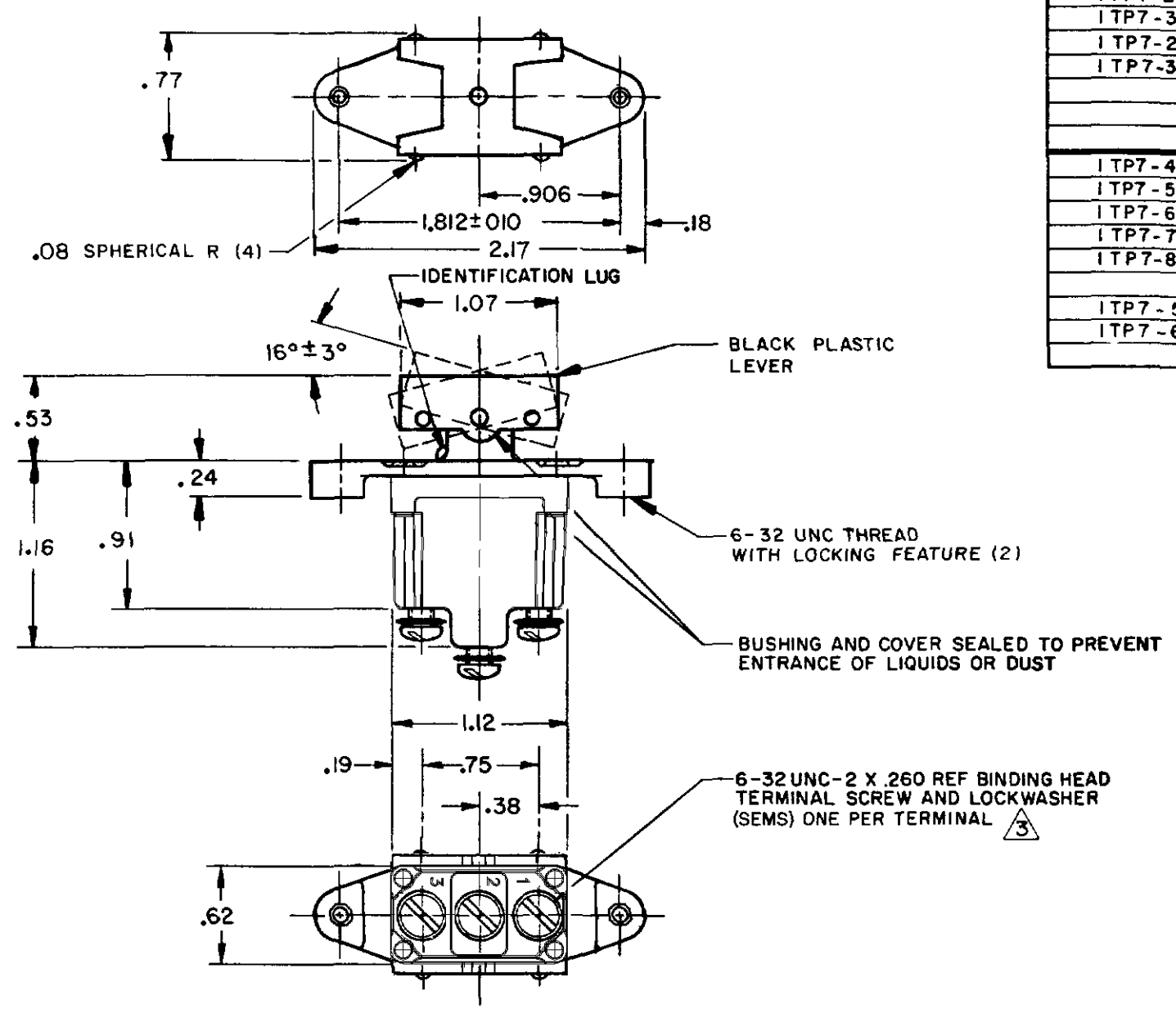
DRAWING NUMBER
M 1TP7 SERIES CHART 1
PAGE 1 OF 1
RELEASE NO PR-4905
ISSUE
13
REVISIONS
A C081370
JAK
20 OCT 95
B CO-95612
JJA
1 OCT 99
C C094412
DLM
13 OCT 99
FORMTEK
DRAWN
BEN 14 OCT 74
CHECK
DJW 21 OCT 74
CHECK
74

MICRO SWITCH
FREEPORT ILLINOIS U.S.A.
A DIVISION OF HONEYWELL
FED MFG CODE 91929

SWITCH-TOGGLE
ABOVE PANEL MOUNT

CATALOG LISTING
1TP7 SERIES
CHART 1

THIS DRAWING COVERS A PROPRIETARY ITEM AND IS THE PROPERTY OF MICRO SWITCH A DIVISION OF HONEYWELL THIS DRAWING IS NOT TO BE COPIED OR USED WITHOUT THE APPROVAL OF MICRO SWITCH



CATALOG LISTING	CIRCUIT WITH BUTTON IN		
	LUG SIDE (1-2)	CENTER (1-2)	OPPOSITE LUG (2-3)
1TP7-1	ON	OFF	ON
1TP7-2	OFF	NONE	ON
1TP7-3	ON	NONE	ON
1TP7-21	NONE	OFF	ON
1TP7-31	NONE	ON	ON
1TP7-4	MOM OFF	NONE	ON
1TP7-5	MOM ON	OFF	ON
1TP7-6	MOM ON	NONE	OFF
1TP7-7	MOM ON	OFF	MOM ON
1TP7-8	MOM ON	NONE	ON
1TP7-51	NONE	ON	MOM ON
1TP7-61	MOM ON	OFF	NONE

ELECTRICAL DATA	
L191	15A 125, <u>250</u> , 277 VAC 1/2HP 125 VAC 1HP <u>250</u> , 277 VAC 5A 125 VAC "L"
L192	10A 125, <u>250</u> , 277 VAC 1/4HP 125 VAC, 1/2HP <u>250</u> , 277 VAC 3A 125 VAC "L"



BUTTON COLOR CODE ⁴	
COLOR IDENTIFICATION	COLOR
W	WHITE
R	RED
Y	YELLOW
BK	BLACK
G	GREEN
BL	BLUE
T	TRANSPARENT

- NOTES
1 - MICRO SWITCH CATALOG LISTING MARKED ON SIDE OF SWITCH
2 - THESE SWITCHES WILL WITHSTAND TEMPERATURE OF 160°F CONTINUOUSLY AT FULL RATED LOAD
³ SCREWS FURNISHED UNASSEMBLED
⁴ SUFFIX MUST BE ADDED FOR DESIRED BUTTON COLOR (EXAMPLE: 1TP7-1-W)

SCALE FULL
DO NOT SCALE PRINT
UNLESS OTHERWISE NOTED
DIMENSIONS ARE IN INCHES
TOLERANCES ARE
ONE PLACE ± .01
TWO PLACE ± .001
THREE PLACE ± .0001
ANGLES ± .005
WEIGHT .09 LB EST

Mouser Electronics

Authorized Distributor

Click to View Pricing, Inventory, Delivery & Lifecycle Information:

[Honeywell:](#)

[1TP7-3](#)