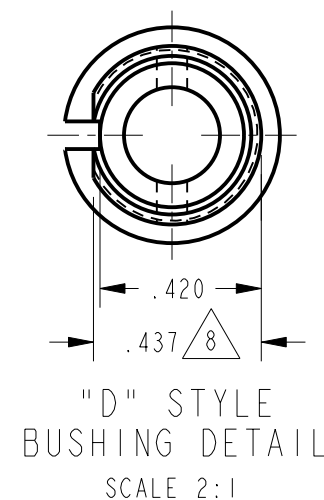


- NOTES
- 1 - UNIT INCLUDES 5X "SX" TYPE BASIC SWITCH (MEETS REQUIREMENTS OF MIL-S-6743)
 - 2 - SWITCHES DO NOT NECESSARILY OPERATE SIMULTANEOUSLY
 - 3 - TERMINALS ARE PLATED FOR SOLDERING
 - 4 - DULL FINISH ON LEVER AND BUSHING
 - 5 - SWITCH NUMBERS MARKED ON END OF BASIC SWITCHES
 - 6 - TERMINAL DESIGNATION MARKED ON BOTH SIDES OF UNIT
 - 7 - SWITCH NO. 1 IS GOLD BIFURCATED CONTACT CONSTRUCTION (APPLIES TO SWITCH NO. 1 ONLY)
 - 8 - "D" SHAPED BUSHING
 - 9 - HARDWARE FURNISHED ASSEMBLED WITH SWITCH OR IN PACKET PER MIL-PRF-8805
 - 10 - REPLACEMENT MOUNTING HARDWARE PACKET 15PA313-AT



ELECTRIC RATINGS			
LOAD	SEA LEVEL		50,000 FT
	28 Vdc (AMPERES)	115 Vac, 60 Hz (AMPERES)	28 Vdc (AMPERES)
RESISTIVE ∇ 7		1	.01
RESISTIVE	7	7	4
INDUCTIVE	4	7	2.5

ANSI Y14.5M-1982 APPLIES

Mouser Electronics

Authorized Distributor

Click to View Pricing, Inventory, Delivery & Lifecycle Information:

[Honeywell:](#)

[66AT312-3](#)