
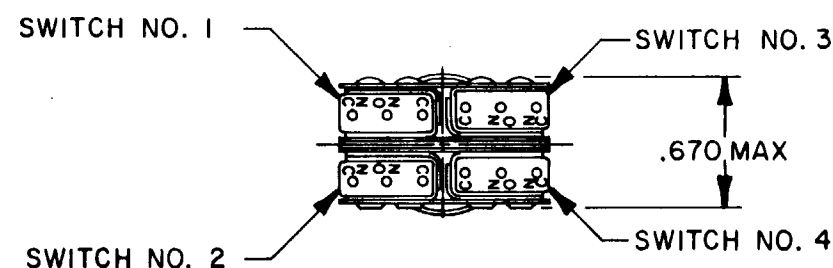
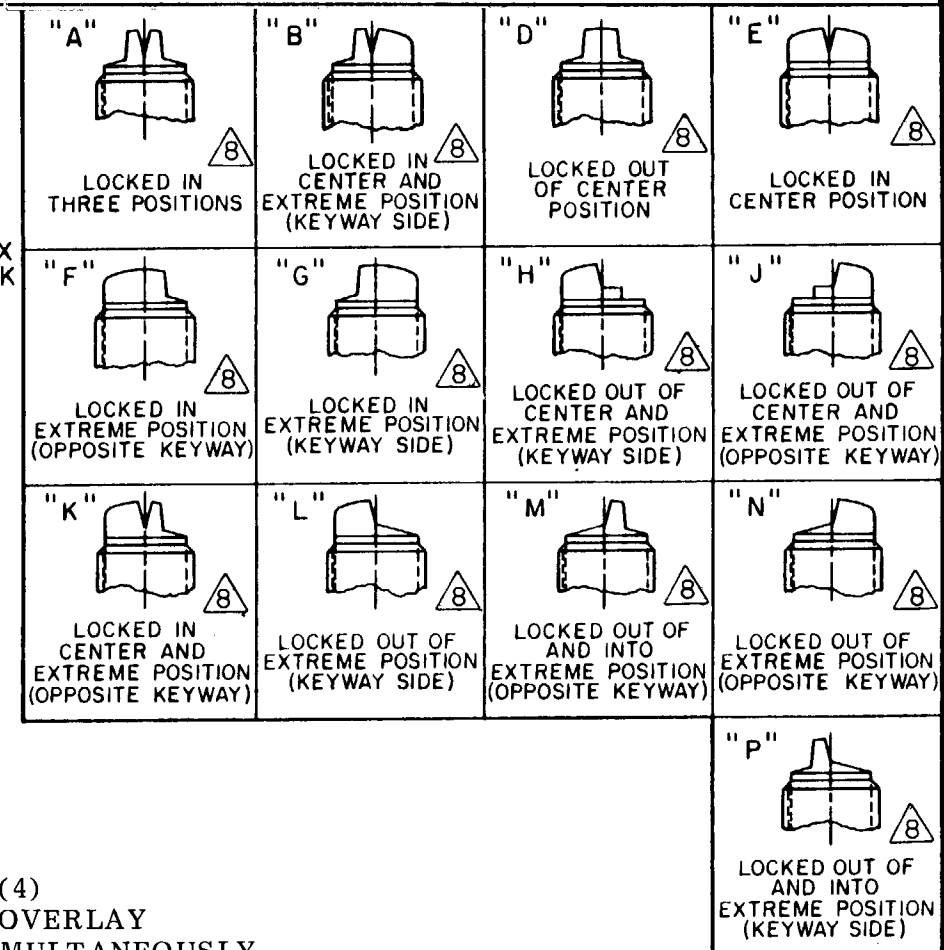
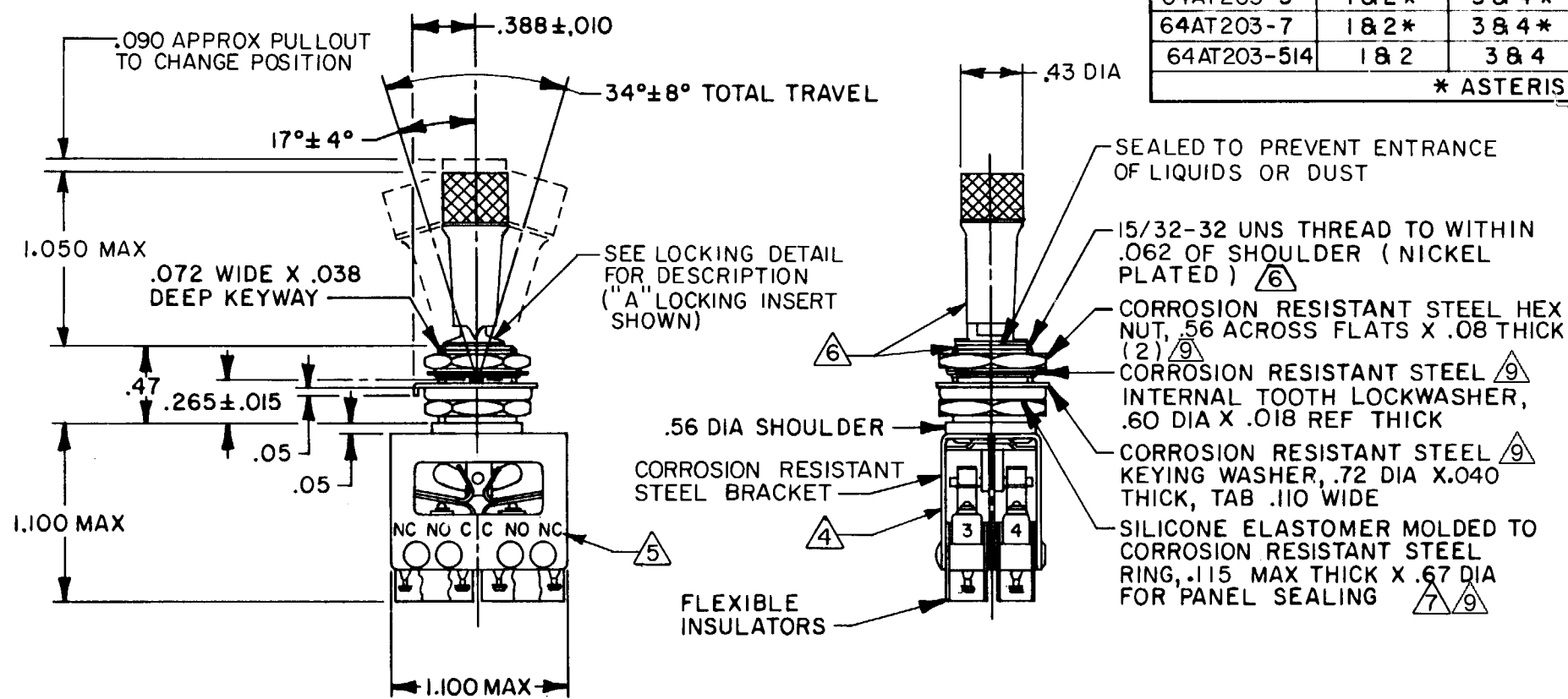


FED. MFG. CODE 91920

CHART 2

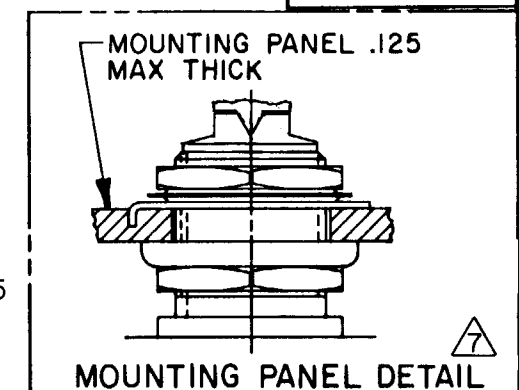
CATALOG LISTING 	KEYWAY POSITION		CENTER POSITION		OPPOSITE KEYWAY POSITION		RECOMMENDED LOCKING COMBINATIONS
	C-NC	C-NO	C-NC	C-NO	C-NC	C-NO	
64AT203-1	1 & 2	3 & 4	ALL	NONE	3 & 4	1 & 2	A, B, C, D, E, F, G, H, J, K, L, M, N, P
64AT203-3	1 & 2	3 & 4	NONE	NONE	3 & 4	1 & 2	D, F, G
64AT203-5	1 & 2 *	3 & 4 *	ALL	NONE	3 & 4	1 & 2	E, F, K, L, M, N
64AT203-7	1 & 2 *	3 & 4 *	ALL	NONE	3 & 4 *	1 & 2 *	E, L, N
64AT203-514	1 & 2	3 & 4	ALL	NONE	3 & 4 *	1 & 2 *	B, E, G, L, N, P

* ASTERISK DENOTES MOMENTARY POSITION




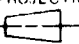
NOTES

- 1 - UNIT INCLUDES "23SX" TYPE BASIC SWITCH (4)
MATING CONTACT SURFACES ARE 24K GOLD OVERLAY
- 2 - SWITCHES DO NOT NECESSARILY OPERATE SIMULTANEOUSLY
- 3 - TERMINALS ARE PLATED FOR SOLDERING
- 4 - SWITCH NUMBERS STAMPED ON END OF BASIC SWITCHES
- 5 - TERMINAL DESIGNATION STAMPED ON BOTH SIDES OF UNIT
- 6 - MATTE NICKEL FINISH
- 7 - FOR PANEL SEAL TO BE EFFECTIVE MOUNTING HOLE IN PANEL
SHOULD NOT EXCEED .500 DIA
- 8 - SUFFIX LETTER MUST BE ADDED FOR DESIRED TYPE TOGGLE
LOCKING (SEE CHART FOR RECOMMENDED LOCKING COMBINATIONS)
- 9 - HARDWARE FURNISHED ASSEMBLED WITH SWITCH OR IN PACKET PER MIL-PR-8805



Furnished under United States Government Contract No. . Shall not be either released outside the Government, or used, duplicated or disclosed in whole or in part for manufacture or procurement, without the written permission of MICRO SWITCH, A Division of Honeywell, except for: (I) emergency repair or overhaul work by or for the Government, where the item or process concerned is not otherwise reasonably available to enable timely performance of the work; or (II) release to a foreign government, as the interests of the United States may require; provided that in either case the release, use, duplication or disclosure hereof shall be marked on any reproduction hereof in whole or in part.

CHARACTERISTICS	ELECTRICAL DATA
PULLOUT FORCE 3 LB MIN - 5 LB MAX	CONTACT ARRANGEMENT S P D T (4)

SCALE		FULL	
DO NOT SCALE PRINT			
TOLERANCES			
APPLY TO DESIGN UNITS. CONVERSIONS ARE ONLY FOR REFERENCE. UNLESS NOTED, TOLERANCES ARE ±			
DIM. mm	TOL. mm/in	DIM. in	TOL. mm/in
NONE PLACES ONE PLACE TWO PLACES THREE PLACES ANGLES	± 1/64 0.4%/0.18 0.18/0.008	X X X X X X X X X	0.8/0.03 0.38/0.01 0.13/0.004
DESIGN UNITS <input type="checkbox"/>		US CUSTOMARY <input checked="" type="checkbox"/>	
THIRD ANGLE PROJECTION			
			
WEIGHT .09 LB		APPROX	

DETAIL RATING CHART											
VOLTS	CYCLE			AMPERES SEA LEVEL				AMPERES 70,000 FT			
				RES	IND			RES	IND		
28	D C			I	.5			I	.5		

REVISIONS

A	OBS DWG CO47639
S	M A
I	MAY 80
B	RE-INS PR4667
S	L E
4	NOV 82
C	CO 52593
	WJM
9	DEC 82
D	CO5400
	J A P
19	OCT 83
E	207004
	TSM
	13 DEC 02

RASTER

FO-52851-B

DRAWN

Mouser Electronics

Authorized Distributor

Click to View Pricing, Inventory, Delivery & Lifecycle Information:

[Honeywell:](#)

[64AT203-1M](#) [64AT203-3G](#)