

32AT444-T2

CATALOG LISTING

M

ISSUE 6

REVISIONS
A 0000962
TRF 18AUG03

TRF 18AUG03

TRF 18AUG03

TRF 18AUG03

TRF 18AUG03

TRF 18AUG03

TRF 18AUG03

TRF 18AUG03

TRF 18AUG03

TRF 18AUG03

TRF 18AUG03

TRF 18AUG03

TRF 18AUG03

TRF 18AUG03

TRF 18AUG03

TRF 18AUG03

TRF 18AUG03

TRF 18AUG03

TRF 18AUG03

TRF 18AUG03

TRF 18AUG03

TRF 18AUG03

TRF 18AUG03

TRF 18AUG03

MICRO SWITCH
a Honeywell Division

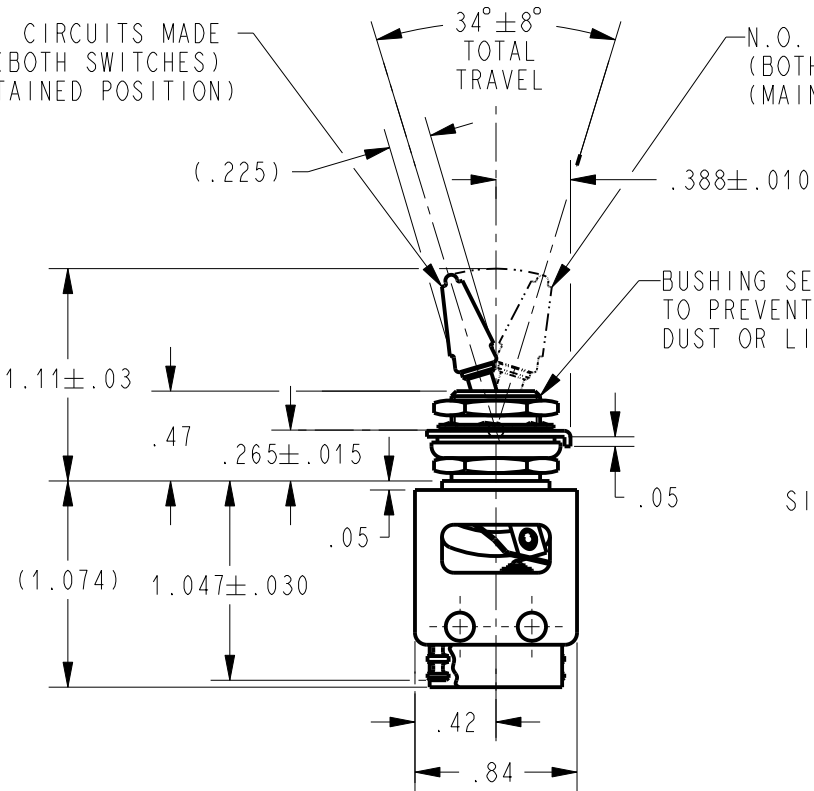
FED. MFG. CODE 91929

ASSEMBLY-
TOGGLE SWITCH

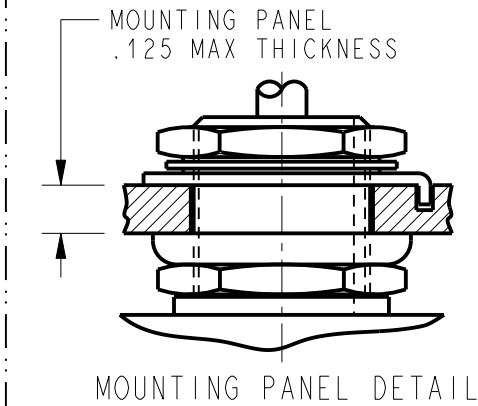
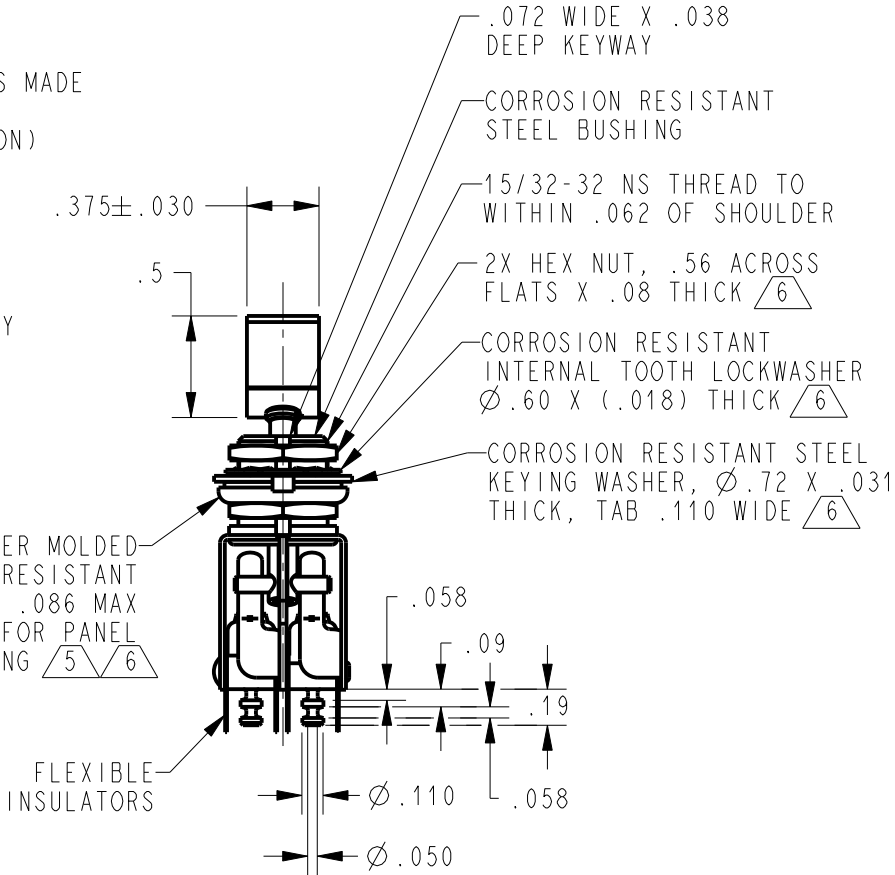
CATALOG LISTING

32AT444-T2

N.C. TO C. CIRCUITS MADE
(BOTH SWITCHES)
(MAINTAINED POSITION)

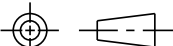


N.O. TO C. CIRCUITS MADE
(BOTH SWITCHES)
(MAINTAINED POSITION)



THIS DRAWING COVERS A PROPRIETARY ITEM AND IS THE PROPERTY OF MICRO SWITCH, A DIVISION OF HONEYWELL. THIS DRAWING IS NOT TO BE COPIED OR USED WITHOUT THE APPROVAL OF MICRO SWITCH

THIRD ANGLE PROJECTION



SCALE FULL

DO NOT SCALE PRINT

UNLESS OTHERWISE SPECIFIED
TOLERANCES ARE

ONE PLACE (.0) ±.030
TWO PLACE (.00) ±.015
THREE PLACE (.000) ±.005
ANGLES ±

WEIGHT .06 LB APPROX

ANSI Y14.5M-1982 APPLIES

NOTES

- 1 - UNIT INCLUDES CATALOG LISTING 2X 21SM284-T2 BASIC SWITCH
- 2 - TERMINALS ARE PLATED FOR SOLDERING
- 3 - SWITCHES DO NOT NECESSARILY OPERATE SIMULTANEOUSLY
- 4 - KNOB PORTION OF TOGGLE LEVER BRIGHT ANODIZED
- 5 FOR PANEL SEAL TO BE EFFECTIVE, MOUNTING HOLE IN PANEL SHOULD NOT EXCEED Ø.500
- 6 HARDWARE FURNISHED ASSEMBLED WITH SWITCH OR IN PACKET PER MIL-PRF-8805

Mouser Electronics

Authorized Distributor

Click to View Pricing, Inventory, Delivery & Lifecycle Information:

[Honeywell:](#)

[32AT444-T2](#)