

## SERIES

## DESIGNATES PRESSURE

L - LOW PRESSURE (IN H<sub>2</sub>O)  
- NO DESIGNATION (PSI)

## PRESSURE RANGE

04, 10 IN H<sub>2</sub>O  
0.3, 01, 05, 15, 30,  
60, 100, 150 PSI

## ACCURACY GRADE

C - COMMERCIAL GRADE  
- NO DESIGNATION  
COMMERCIAL GRADE

## PORT OPTION

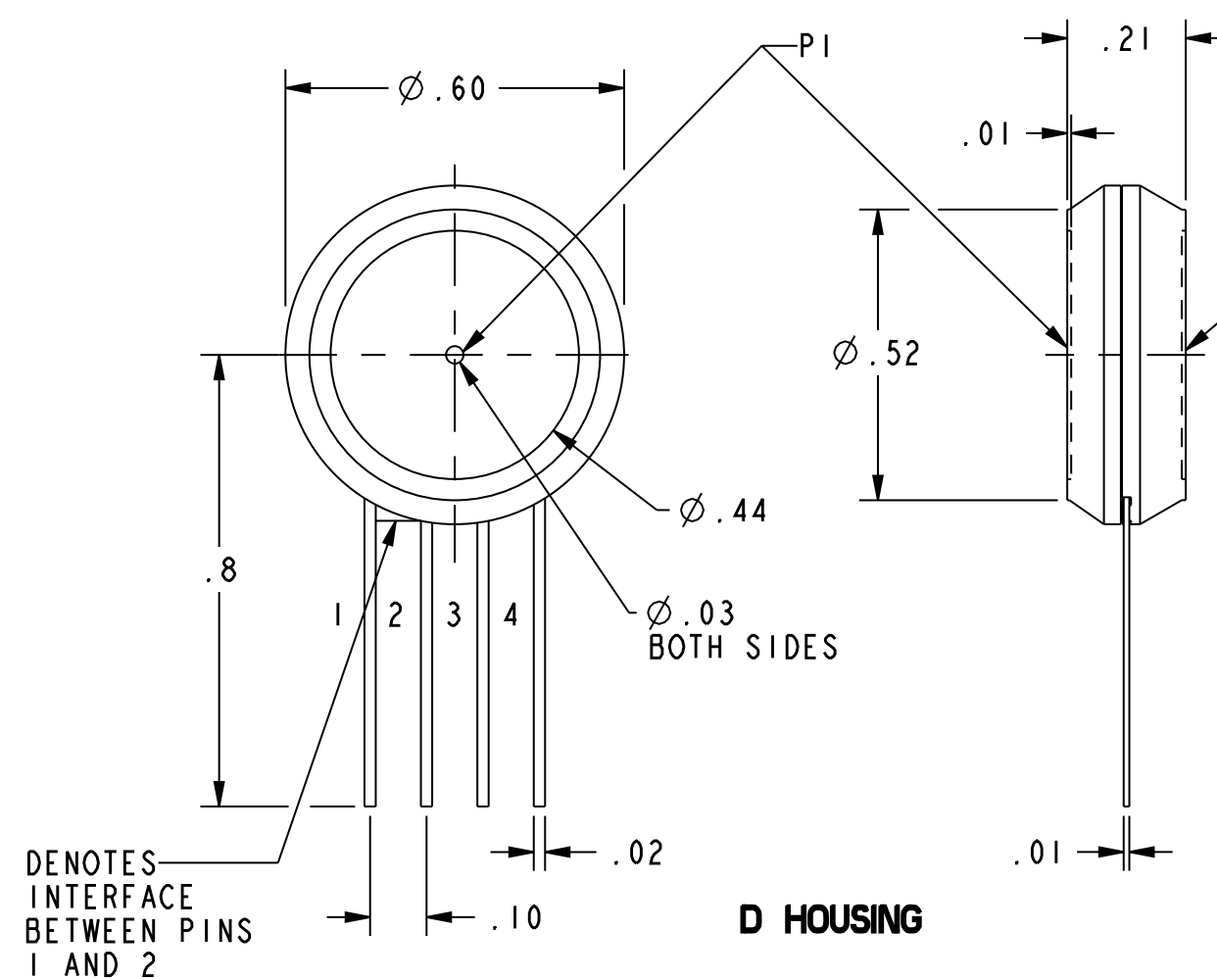
F - AXIAL  
T - RADIAL  
FS - OFFSET AXIAL

## PRESSURE REFERENCE

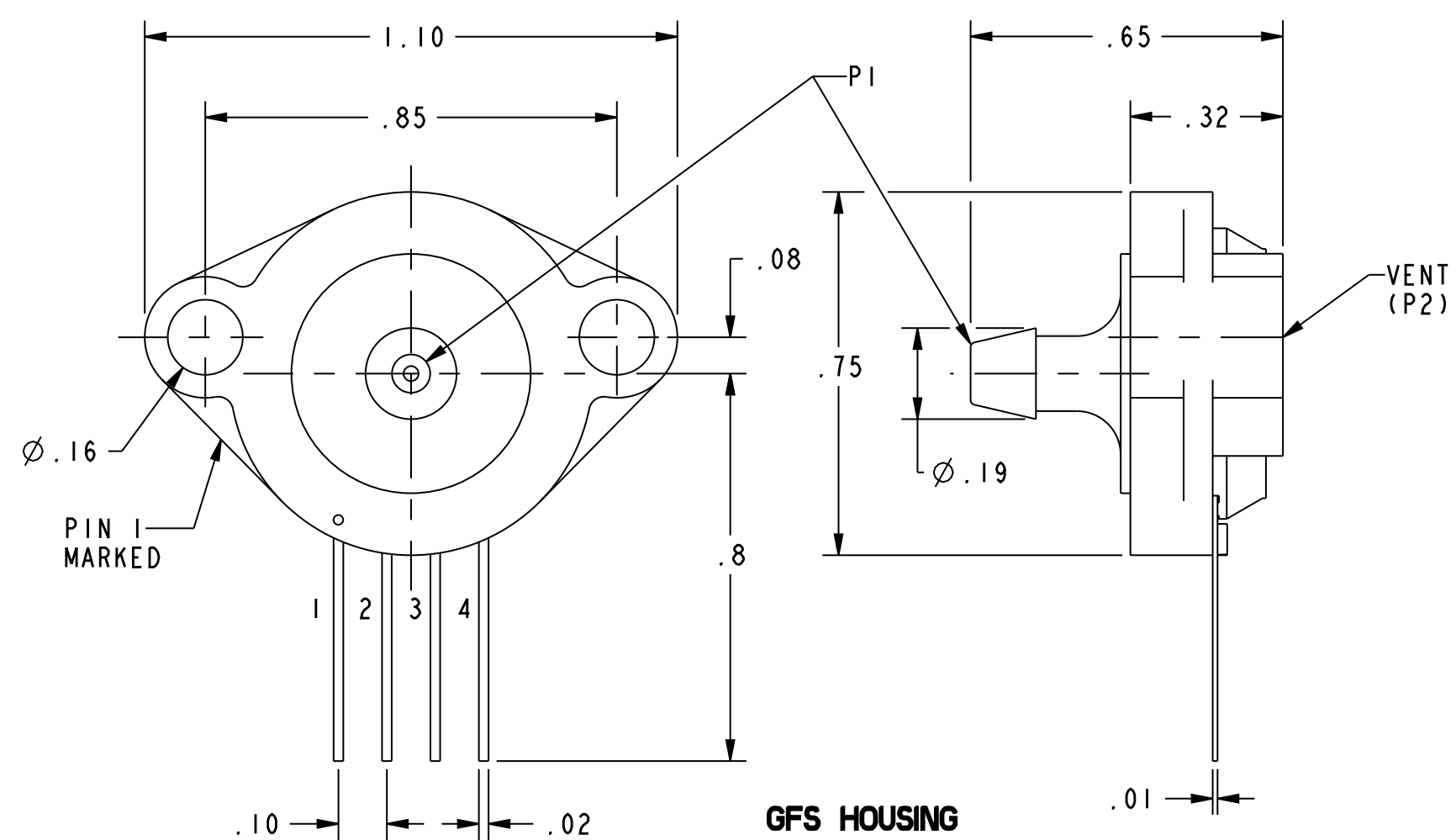
G - GAGE  
D - DIFFERENTIAL

## CATALOG LISTINGS

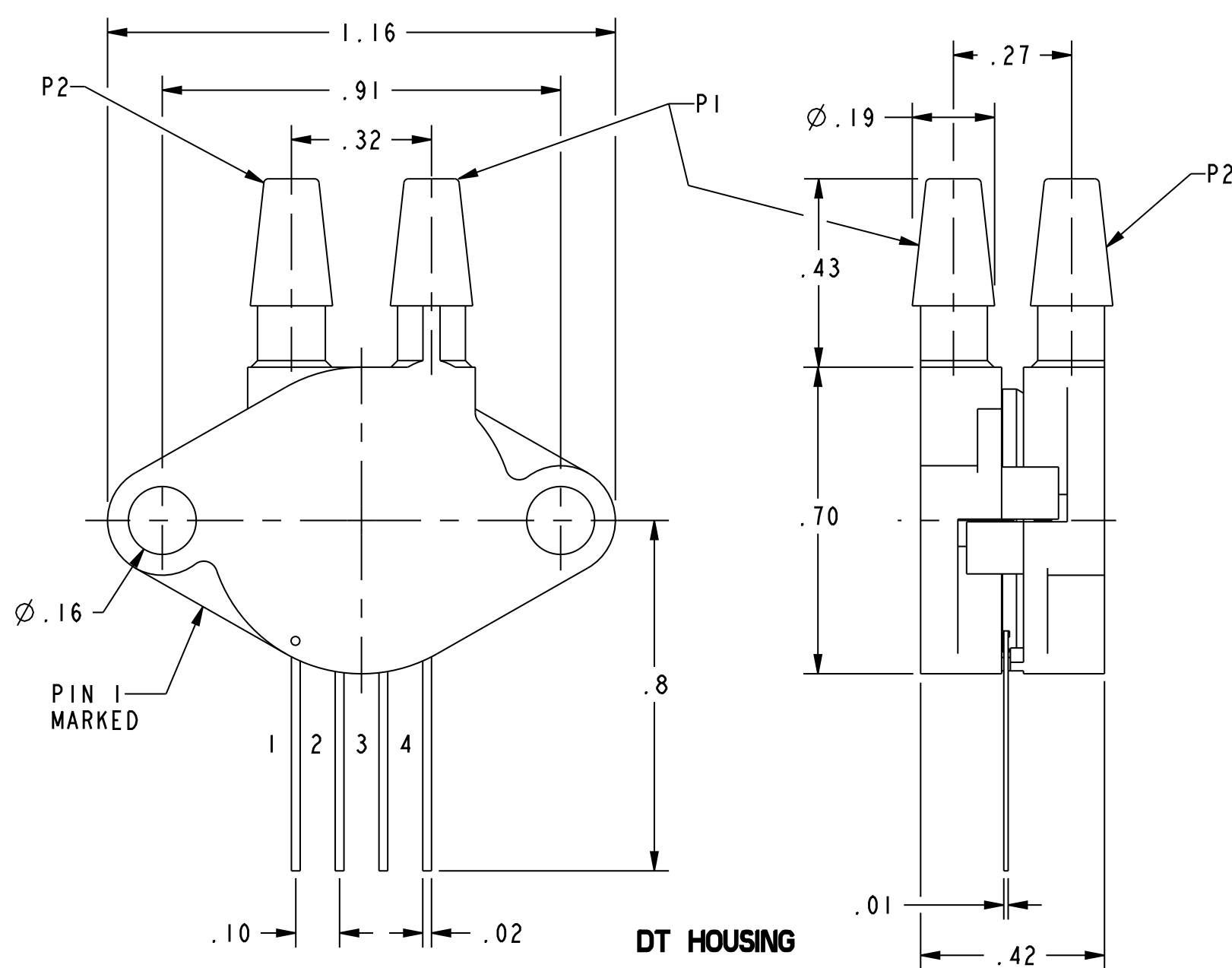
XPXL04DTC
⑤
XPXL10DT
⑤
XPX01D
⑤
XPX15DT
XPX15GFS
⑤
XPX30DT
XPX100D
XPX100DT
⑤
XPX100GFS
XPX150D



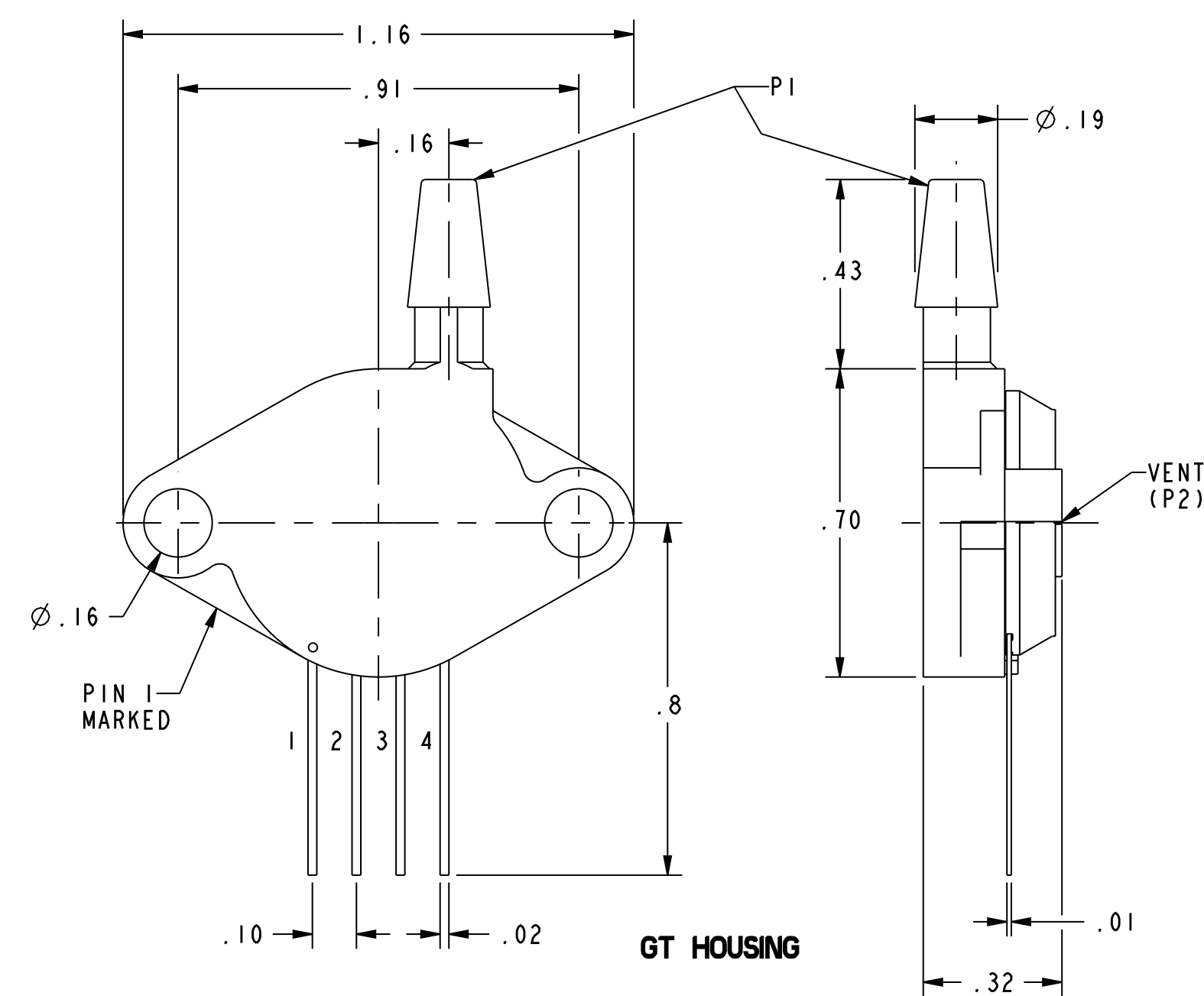
D HOUSING



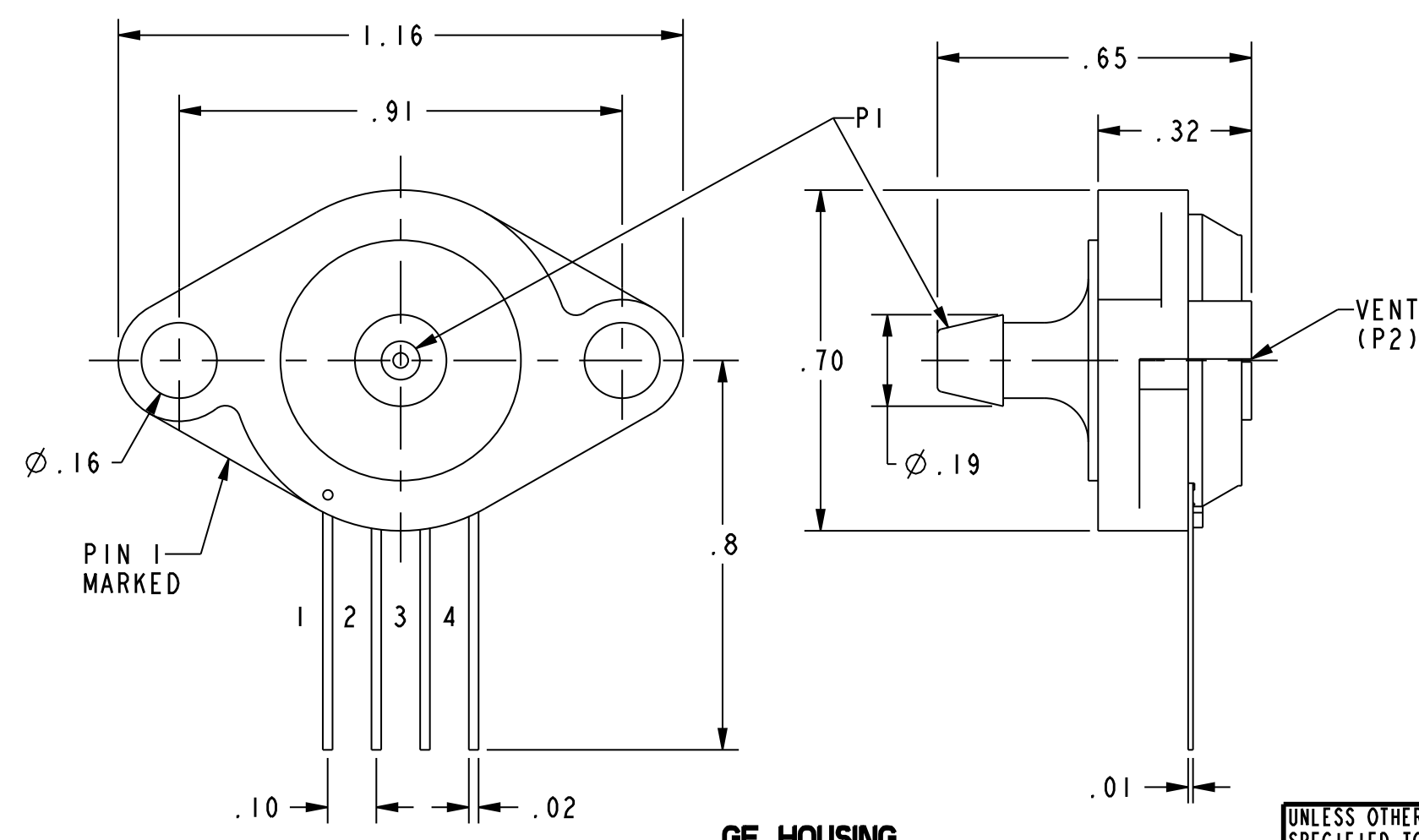
GFS HOUSING



DT HOUSING

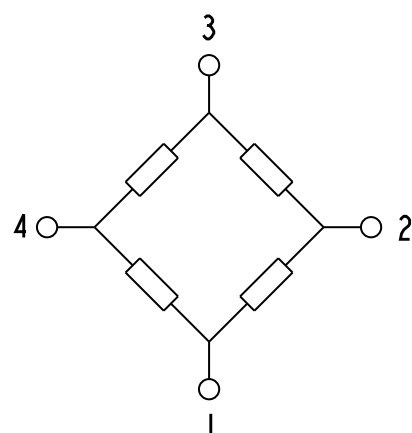


GT HOUSING



GF HOUSING

XPX/XPXL G AND D STYLE (GAGE/DIFFERENTIAL)	PERFORMANCE AT 25°C AND 5±0.01 V <sub>dc</sub> (UNLESS OTHERWISE STATED)			UNITS	FULL SCALE PRESSURE PSI	PROOF PRESSURE PSI	BURST PRESSURE PSI
	MIN	NOM	MAX				
OFFSET (FOR ALL LISTINGS)	-50	0	50	mV			
4 IN H <sub>2</sub> O SPAN (P1>P2) (L04 LISTING)	50	68	86	mV	4 IN H <sub>2</sub> O	3	5
10 IN H <sub>2</sub> O SPAN (P1>P2) (L10 LISTING)	45	78.5	112	mV	10 IN H <sub>2</sub> O	3	5
0.3 PSI SPAN (P1>P2)	37	65	93	mV	0.3	3	5
1 PSI SPAN (P1>P2)	40	75	110	mV	1	3	5
5 PSI SPAN (P1>P2)	112	168.5	225	mV	5	15	25
15 PSI SPAN (P1>P2)	168	253	338	mV	15	45	75
30 PSI SPAN (P1>P2)	168	253	338	mV	30	90	150
60 PSI SPAN (P1>P2)	189	263.5	338	mV	60	180	300
100 PSI SPAN (P1>P2)	210	295	380	mV	100	250	400
150 PSI SPAN (P1>P2)	187	262.5	338	mV	150	250	400
TEMPERATURE CHANGE BRIDGE RESISTANCE	---	2600	---	ppm/°C			
TEMPERATURE CHANGE SPAN	---	-1800	---	ppm/°C			
COMBINED LINEARITY AND HYSTERESIS $\angle 2$	---	---	1	% SPAN			




EQUIVALENT CIRCUIT

PIN OUT	
1	- V EXCITATION
2	+ OUTPUT SIGNAL
3	+ V EXCITATION
4	- OUTPUT SIGNAL

## NOTES:

- SPAN IS THE ALGEBRAIC DIFFERENCE BETWEEN THE OUTPUT AT FULL SCALE PRESSURE AND THE OFFSET OUTPUT
- LINEARITY IS MEASURED AT 1/2 FULL SCALE PRESSURE USING BEST STRAIGHT LINE FIT
- THE OUTPUT OF THE SENSOR IS PROPORTIONAL, RATIOMETRIC TO THE EXCITATION VOLTAGE.  
ALL SPECIFICATIONS WILL NOMINALLY BE CHANGED BY THE RATIO OF  $V_{EXCITATION}/5.0 V_{dc}$
- LIMIT SOLDERING TO 315°C FOR LESS THAN 10 SECONDS
- PIN 1 IS IDENTIFIED BY THE DOT ON THE BRIDGING TAB BETWEEN TERMINALS 1 AND 2
- APPLY PRESSURE TO PORT INDICATED ON THE DRAWINGS SHOWN
- SENSORS ARE OPERATIONAL OVER VACUUM PRESSURE RANGE
- P1 INPUT MEDIA RESTRICTED TO DRY GASES ONLY
- P2 INPUT MEDIA RESTRICTED TO MEDIA COMPATIBLE WITH NYLON, EPOXY ADHESIVE AND SILICON

UNLESS OTHERWISE SPECIFIED TOLERANCES ARE:  NO PLACE .X ONE PLACE .X TWO PLACE .XX THREE PLACE .XXX ANGLES RAW MATERIAL-COMMERCIAL STANDARD	<input checked="" type="checkbox"/> US/INCH CUSTOMARY	<input type="checkbox"/> SI/METRIC	DRAWN	TSM	29MAR01	<div><b>Honeywell</b></div> <div>THIS DRAWING COVERS A PROPRIETARY ITEM AND IS THE PROPERTY OF HONEYWELL. THIS DRAWING IS NOT TO BE COPIED OR USED WITHOUT THE PERMISSION OF HONEYWELL.</div> <div>TITLE</div> <div><b>PRESSURE SENSOR</b></div>				
			CHECK	SAV	29MAR01					
			THIRD ANGLE PROJECTION							
			DIMENSIONS ARE TO BE MET BEFORE PROTECTIVE COATINGS ARE APPLIED							
			PTC 3D ASME Y14.5M-1994							
<div>THIRD ANGLE PROJECTION</div> <div></div>			SIZE	D	DWG TYPE	I	DRAWING NAME	XPX GAGE DIF SERIES CHART 1	REV	6
			SCALE	3:1		WEIGHT		SHEET 1 OF 1		

# Mouser Electronics

Authorized Distributor

Click to View Pricing, Inventory, Delivery & Lifecycle Information:

[Honeywell:](#)

[XPX15GFS](#) [XPX30DT](#)