

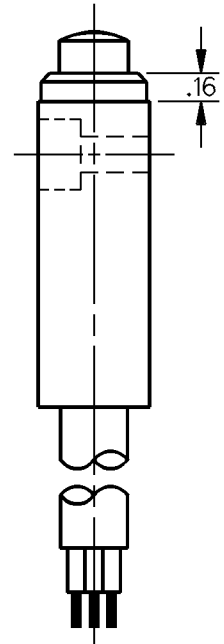
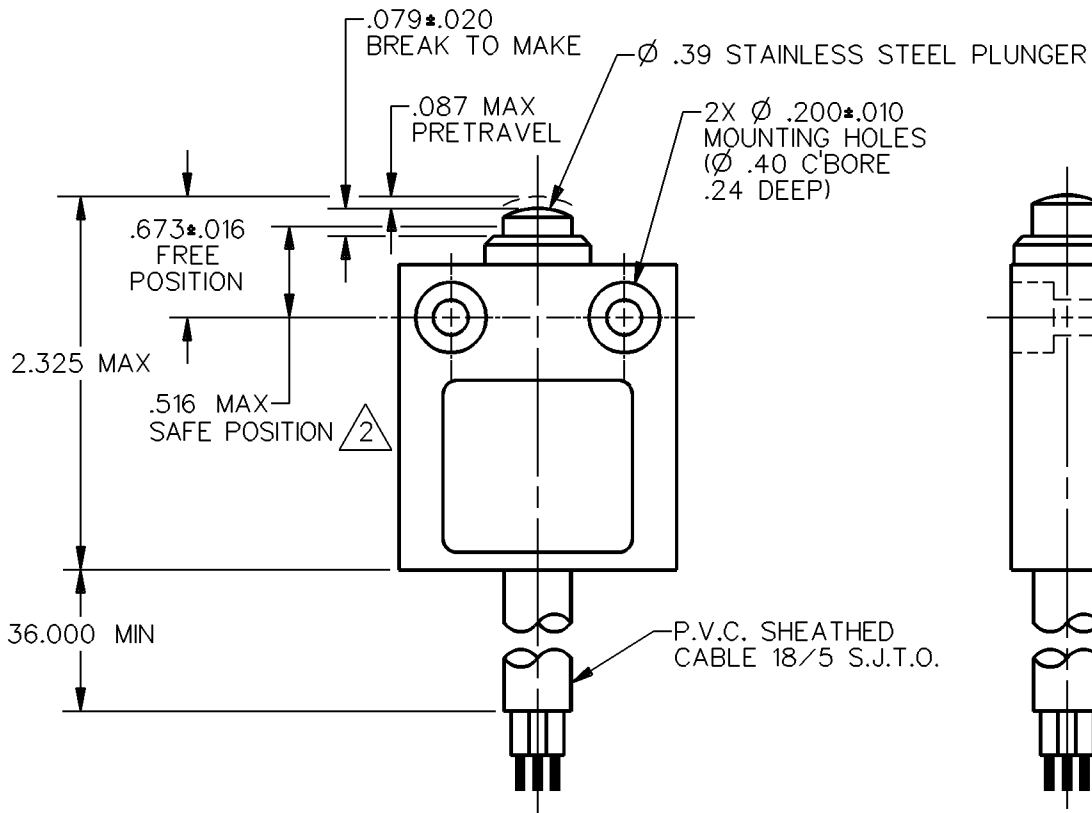
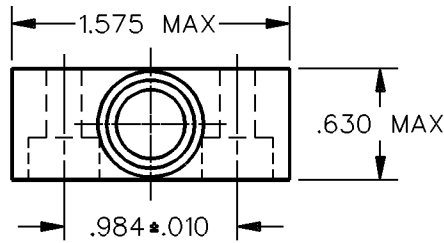
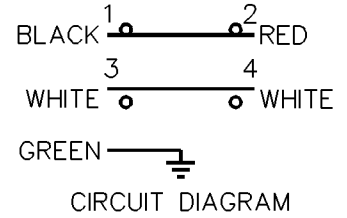
**MICRO SWITCH**  
a Honeywell Division

FED. MFG. CODE 91929

# MINIATURE PRECISION LIMIT SWITCH

CATALOG LISTING

**924CE1-S3**



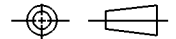
## NOTES


- 1 - ZINC HOUSING FINISHED WITH GRAY PAINT
- 2 THE MINIMUM PLUNGER TRAVEL PAST BREAK, FOR A SAFE CONTACT GAP IS .060
- 3 - SWITCH PROVIDES BREAK BEFORE MAKE CIRCUITRY

ANSI Y14.5M-1982 APPLIES

THIS DRAWING COVERS A PROPRIETARY ITEM AND IS THE PROPERTY OF MICRO SWITCH, A DIVISION OF HONEYWELL. THIS DRAWING IS NOT TO BE COPIED OR USED WITHOUT THE APPROVAL OF MICRO SWITCH.

THIRD ANGLE PROJECTION



CHARACTERISTICS	ELECTRICAL DATA	SCALE FULL	DO NOT SCALE PRINT
OPERATING FORCE — — — 5.1 LB MAX OVERTRAVEL — — — — .039 MIN	CONTACT ARRANGEMENT S P D T D B	<b>UNLESS OTHERWISE SPECIFIED TOLERANCES ARE</b>  ONE PLACE ( .0 ) ±.030  TWO PLACE ( .00 ) ±.015  THREE PLACE ( .000 ) ±.005  ANGLES ±  WEIGHT	
	10A-250 VAC 1/3HP-125 OR 250 VAC		
			

924CE1-S3

M

DRAWING NUMBER

2

ISSUE

REVISIONS

A	CO-69061
S A V	29 AUG 91

DDM/CAD

SAV 29 AUG 91

RELEASE NO. PR-14729

REPLACES

CHECK

CHECK

DRAWN

# Mouser Electronics

Authorized Distributor

Click to View Pricing, Inventory, Delivery & Lifecycle Information:

[Honeywell:](#)

[924CE1-S3](#)