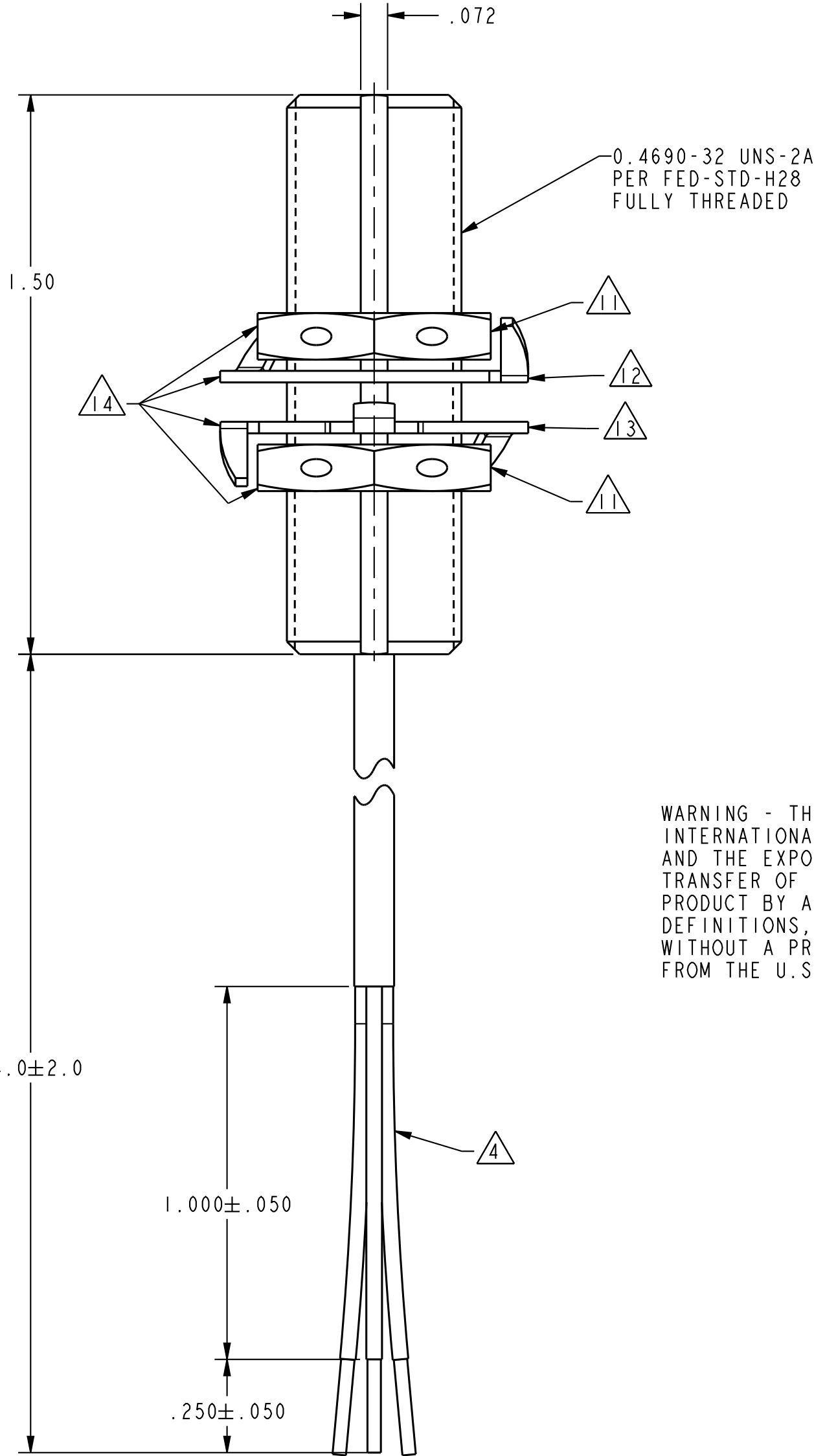
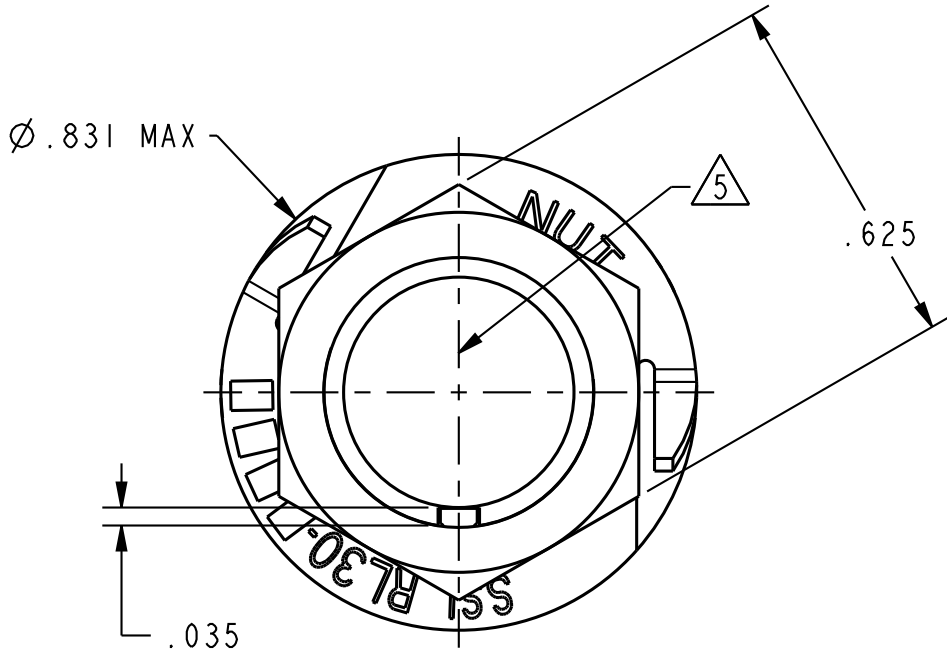


REV	DOCUMENT	CHANGED BY	CHECK
A	0014471	JM/AP 29JUL05	PH/AP
B	0016113	JM/AP 19OCT05	PH/AP
C	0018560	JM/AP 19JAN06	PH/AP
D	0076914	BM 28APR11	DSK

OPERATING CHARACTERISTICS	ELECTRICAL SPECIFICATIONS
OPERATE MAGNETIC FLUX DENSITY: 250 GAUSS MAX. RELEASE MAGNETIC FLUX DENSITY: 45 GAUSS MIN. DIFFERENTIAL MAGNETIC FLUX DENSITY: 5 GAUSS MIN. RESPONSE TIME: 100 MICROSECONDS MAX.	INPUT SUPPLY VOLTAGE: 18-32 VDC SUPPLY CURRENT: 25 MILLIAMPS MAX. OUTPUT NORMALLY OPEN CURRENT SINK (NPN) RATED LOAD CURRENT: 20 MILLIAMPS MAX., RESISTIVE ONLY VOLTAGE DROP: 1.00 VDC MAX LEAKAGE CURRENT: 100 MICROAMPS MAX. POWER UP RESPONSE TIME: 20.0 MILLISECONDS MAX.



WARNING - THIS PRODUCT IS SUBJECT TO THE U.S. INTERNATIONAL TRAFFIC IN ARMS REGULATIONS (ITAR), AND THE EXPORT CONTROL LAWS OF THE UNITED STATES. TRANSFER OF TECHNICAL DATA PERTAINING TO THIS PRODUCT BY ANY MEANS TO A FOREIGN PERSON PER ITAR DEFINITIONS, WHETHER IN THE UNITED STATES OR ABROAD, WITHOUT A PRIOR EXPORT LICENSE OR OTHER APPROVAL FROM THE U.S. DEPARTMENT OF STATE, IS PROHIBITED.

- NOTES
- 1 MAGNETIC FLUX DENSITY IS SPECIFIED AT A DISTANCE OF 0.065 INCH BEHIND THE CENTER OF THE SENSOR FACE. (NOMINAL LOCATION OF THE INTERNAL HALL EFFECT SENSOR). CHARACTERISTICS APPLY OVER VOLTAGE AND TEMPERATURE RANGES.
 - 2 OPERATING AND STORAGE TEMPERATURE IS -55 C TO +150 C
 - 3 HOUSING MATERIAL: 300 SERIES STAINLESS STEEL
 - 4 SENSOR LEADS PER JSFY10A22WR3N24:
 - 18-32 VDC: WHITE
 - OUTPUT: ORANGE
 - GROUND: BLUE
 - 5 THIS SURFACE IS LASER MARKED WITH .050 HIGH LETTERING AS FOLLOWS:
 - "21FW-74"
 - "91929"
 - SERIAL NUMBER (SNXXXX)
 - DATE CODE (YRWK)
 - 6 MAXIMUM MOUNTING TORQUE: 65 IN-LB
 - 7 WEIGHT - 20 GRAMS MAX, EXCLUDING CABLE
 - 8 SENSOR WILL OPERATE AS SPECIFIED WHEN OPERATING WITH POWER SOURCE PER MIL-STD-704E / 28VDC SYSTEM UNDER NORMAL, ABNORMAL, AND EMERGENCY OPERATION.
 - 9 DIELECTRIC WITHSTAND VOLTAGE: 2000 VDC, 500 MICROAMP MAX., 5 SECOND MINIMUM DURATION AT SEA LEVEL
 - 10 INSULATION RESISTANCE: 100 MEGOHM MIN. @ 500 VDC
 - 11 MS21340-04 MOUNTING NUT
 - 12 REALLOCK™ PART NUMBER 60198 / RL30-H111-30 WASHER. REALLOCK™ WASHER, AS DRAWN, DOES NOT INCLUDE ALL DESIGN FEATURES OF WASHER. CONSULT REALLOCK™ FOR DETAILED INFORMATION.
 - 13 REALLOCK™ PART NUMBER 60198 / RL30-H131-30 WASHER. REALLOCK™ WASHER, AS DRAWN, DOES NOT INCLUDE ALL DESIGN FEATURES OF WASHER. CONSULT REALLOCK™ FOR DETAILED INFORMATION.
 - 14 MOUNTING HARDWARE SUPPLIED UNASSEMBLED TO SWITCH - HALL EFFECT
 - 15 - SENSOR WILL BE DAMAGED IF WIRED INCORRECTLY OR IF 20 MILLIAMP OUTPUT RATING IS EXCEEDED.

UNLESS OTHERWISE SPECIFIED TOLERANCES ARE:		<input checked="" type="checkbox"/> US (inch) CUSTOMARY	<input type="checkbox"/> SI (mm) METRIC	DRAWN	MJS	14 JUL 05	Honeywell		
NO PLACE	X	±.040	±1	CHECK	-	14 JUL 05			
ONE PLACE	.X	±.030	±0.4	THIS DRAWING COVERS A PROPRIETARY ITEM AND IS THE PROPERTY OF HONEYWELL. THIS DRAWING IS NOT TO BE COPIED OR USED WITHOUT THE PERMISSION OF HONEYWELL.			TITLE		
TWO PLACE	.XX	±.015	±0.15				SWITCH, HALL EFFECT		
THREE PLACE	.XXX	±.005	±	DIMENSIONS ARE TO BE MET BEFORE PROTECTIVE COATINGS ARE APPLIED			SIZE	DWG TYPE	DRAWING NAME
ANGLES		±	±				C	I	21FW-74
RAW MATERIAL-COMMERCIAL STANDARD				3D PTC			SCALE	3:1	WEIGHT
THIRD ANGLE PROJECTION				ASME Y14.5M-1994			SHEET 1 OF 1		
							REV D		

Mouser Electronics

Authorized Distributor

Click to View Pricing, Inventory, Delivery & Lifecycle Information:

[Honeywell:](#)

[21FW-74](#)