

REV	DOCUMENT	CHANGED BY		CHECK
C	0070272	SBH	120CT10	CMH

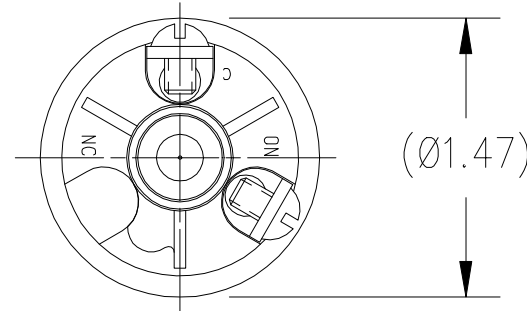
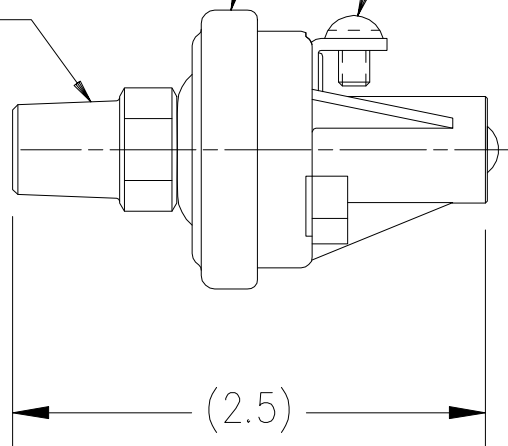
HONEYWELL  
PART NUMBER

78566

HONEYWELL PART NUMBER, PRESSURE  
SETTING AND DATE CODE

8-32 X 1/4 SCREW (2)

1/4-18 THD



## NOTES:

1. SINGLE CIRCUIT NORMALLY OPEN PRESSURE SWITCH.
2. CLOSING ADJUSTMENT RANGE 3.1 - 7 PSI.
3. SWITCH IS FURNISHED WITH STEEL BASE ASSY. (.562 HEX) AS A STANDARD UNLESS BRASS BASE ASSY. (.562 HEX) IS SPECIFIED AS AN OPTION BY CUSTOMER ADDING SUFFIX "B" TO THE HONEYWELL PART NUMBER ON THE PURCHASE ORDER, e.g. XXXXXB.

CUSTOMER: \_\_\_\_\_

APPROVED BY: \_\_\_\_\_

DATE: \_\_\_\_\_

CUSTOMER  
PART NO.: \_\_\_\_\_

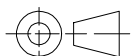
CUSTOMER PRINT

DESIGN UNITS: INCH

TOLERANCES UNLESS NOTED:

NO PLACES	X	±	-
ONE PLACE	.X	±	.020
TWO PLACE	.XX	±	.010
THREE PLACE	.XXX	±	.005
ANGLES	X	±	0° 30'

THIRD ANGLE PROJECTION



DRAWN

H.PAYNE

11MAR03

CHECK

-

-

THIS DRAWING COVERS A PROPRIETARY ITEM  
AND IS THE PROPERTY OF HONEYWELL.  
THIS DRAWING IS NOT TO BE COPIED OR USED  
WITHOUT THE PERMISSION OF HONEYWELL.

INTERPRET PER ASME Y14.5M-1994  
OTHER HONEYWELL ENGINEERING  
STANDARDS MAY APPLY

AUTOCAD

2D

**Honeywell**

TITLE

PRESSURE SWITCH N.O.  
SCREW TERMINALS  
5000 SERIES SWITCH

SIZE

A

TYPE

I

CAGE CODE

-

DRAWING NAME

78566

REV

C

SCALE

1:1

SHEET

1 OF 1

# Mouser Electronics

Authorized Distributor

Click to View Pricing, Inventory, Delivery & Lifecycle Information:

[Honeywell:](#)

[78566-B00000050-22](#)