

**MICRO SWITCH**FREEPORT, ILLINOIS, U.S.A.
A DIVISION OF HONEYWELL

FED. MFG. CODE 91929

**ASSEMBLY-
PUSHBUTTON SWITCH**

CATALOG LISTING

2PB249**M 2PB249**DRAWING
NUMBER

8

ISSUE

REPLACES

RELEASE NO.

CHECK

CHECK

15 FEB 65

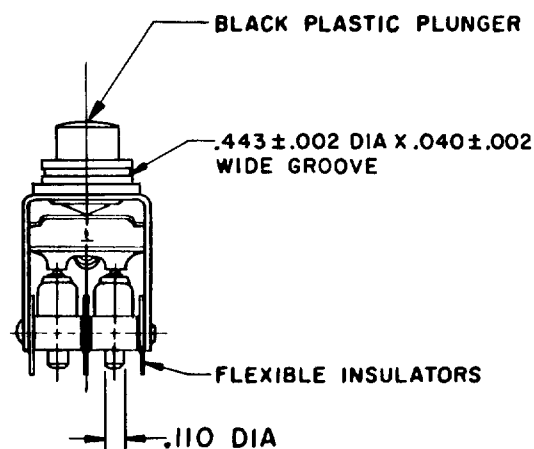
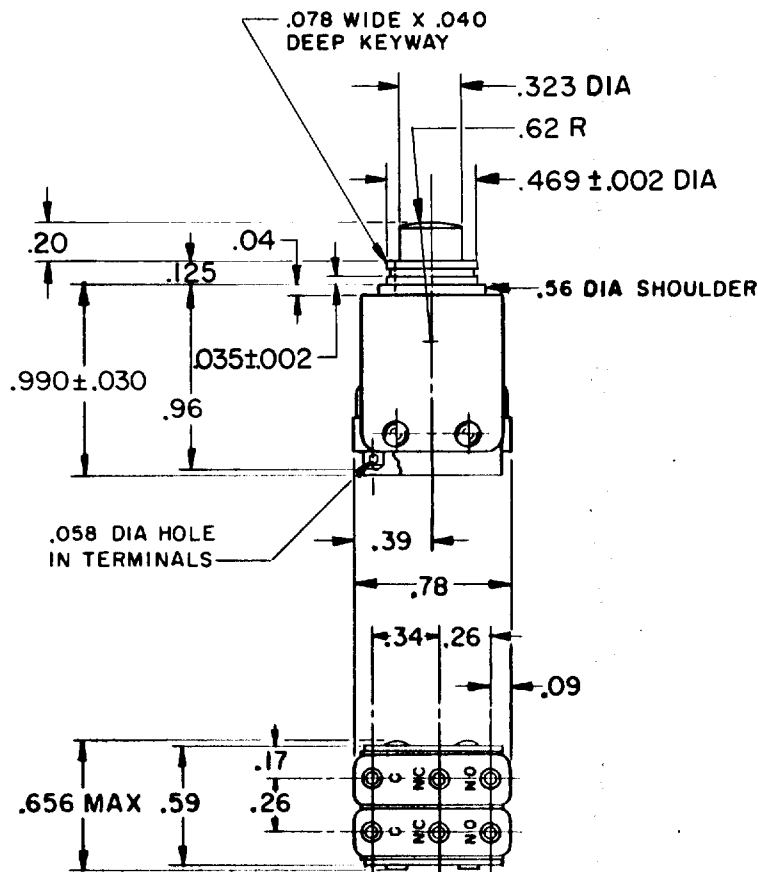
LSD

CHECK

H B W 15 FEB 65

DRAWN

FO-50378

**NOTE -**

- 1- UNIT INCLUDES "ISM" TYPE BASIC SWITCH (2)
- 2- TERMINALS ARE PLATED FOR SOLDERING
- 3- SWITCHES DO NOT NECESSARILY OPERATE SIMULTANEOUSLY

THIS DRAWING COVERS A PROPRIETARY ITEM AND IS THE PROPERTY OF MICRO SWITCH, A DIVISION OF HONEYWELL. THIS DRAWING IS NOT TO BE COPIED OR USED WITHOUT THE APPROVAL OF MICRO SWITCH.

CHARACTERISTICS	ELECTRICAL DATA	SCALE FULL
OPERATING FORCE ——— 30 OZ APPROX	CONTACT ARRANGEMENT S P D T (2)	DO NOT SCALE PRINT
TOTAL TRAVEL ——— .100 APPROX	250 VAC ——— 5 AMP 30 VOLTS DC RATING	UNLESS OTHERWISE NOTED DIMENSIONS ARE IN INCHES TOLERANCES ARE:
	INDUCTIVE ——— SEA LEVEL ——— 3 AMP 50,000 FT ——— 2.5 AMP	ONE PLACE (.0) ±.030 TWO PLACE (.00) ±.015 THREE PLACE (.000) ±.005 ANGLES ±
	RESISTIVE ——— SEA LEVEL ——— 5 AMP 50,000 FT ——— 5 AMP	
	MAXIMUM INRUSH ——— 24 AMP	WEIGHT

Mouser Electronics

Authorized Distributor

Click to View Pricing, Inventory, Delivery & Lifecycle Information:

[Honeywell:](#)

[2PB249](#)