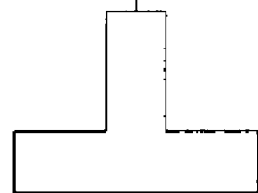
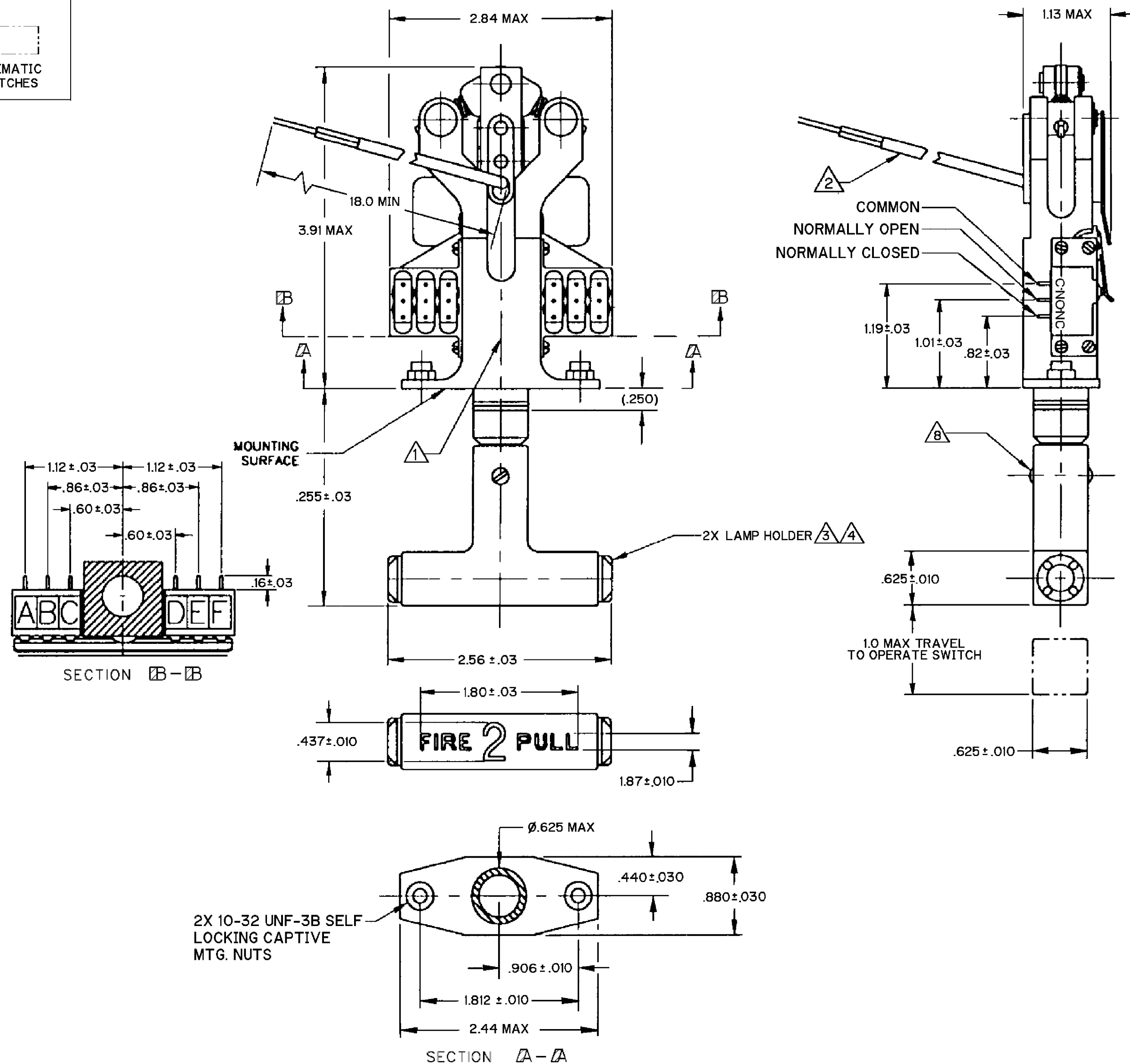
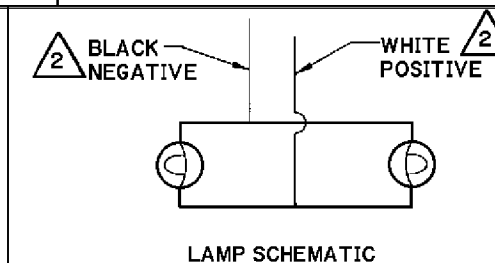


NC  
C  
NO



SWITCH SCHEMATIC  
TYP ALL SWITCHES

M PH-131



#### NOTES

- 1 MARK MANUFACTURER'S NAME, CATALOG LISTING, FED. MFG. CODE AND DATE CODE
- 2 2X ELECTRICAL LEADS TO LAMPS: 20 GAGE PER MIL-W-81044/6
- 3 2X FILTERS: RED MS250101-13A
- 4 2X LAMPS: MS25237-327 (28 VOLTS)
- 5 - MAXIMUM POWER CONSUMPTION PER LAMP TO BE 4.5 WATTS
- 6 - TEE HANDLE: MATTE PLASTIC PER MIL-STD-395, PAINTED RED, COLOR NUMBER 31136 PER FED-STD-595
- 7 - HANDLE MUST NOT APPEAR LIT UNDER AMBIENT LIGHT CONDITIONS AND MUST APPEAR LIT WHEN ENERGIZED UNDER AMBIENT LIGHT CONDITIONS
- 8 TORQUE FASTENER 4 TO 6 IN-LB MAXIMUM AFTER INSTALLATION
- 9 - CONTACTS SEALED PER MIL-PRF-8805 SYMBOL 3 (WATERTIGHT)

2X 10-32 UNF-3B SELF  
LOCKING CAPTIVE  
MTG. NUTS

CHARACTERISTICS		ELECTRICAL DATA	
OPERATING FORCE — — — 7 - 10 LBS		28 VDC	
OVERTRAVEL — — — .075 MIN		SEA LEVEL 50,000 FT	
TOTAL TRAVEL — — — .9 TYP		CONTACT SILVER SILVER	
FUNCTIONAL LAMP LIFE — 25 OPERATIONS MIN		RESISTIVE 7 4	
		INDUCTIVE 4 2.5	
		MOTOR — —	

**MICRO SWITCH**  
a Honeywell Division

SWITCH - ENCLOSED

CATALOG LISTING  
**PH-131**

THIRD ANGLE PROJECTION	
SCALE FULL	
DO NOT SCALE PRINT	
UNLESS OTHERWISE SPECIFIED TOLERANCES ARE	
ONE PLACE	(.0) ±.030
TWO PLACES	(.00) ±.015
THREE PLACES	(.000) ±.005
ANGLES	± 4°
WEIGHT .55 LB MAX	

ANSI Y14.5M-1982 APPLIES

# Mouser Electronics

Authorized Distributor

Click to View Pricing, Inventory, Delivery & Lifecycle Information:

[Honeywell:](#)

[PH-131](#)