
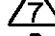
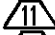
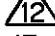

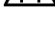
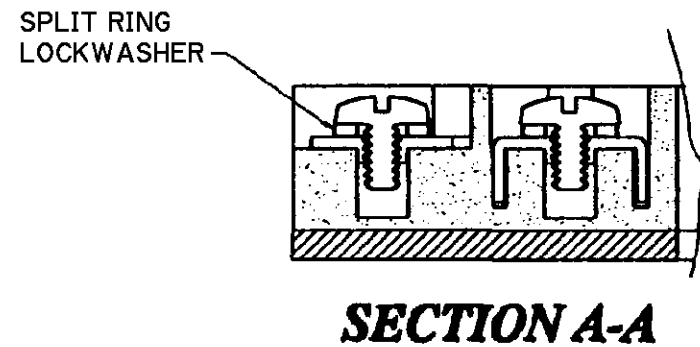
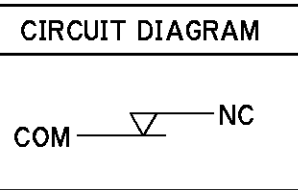


NOTES

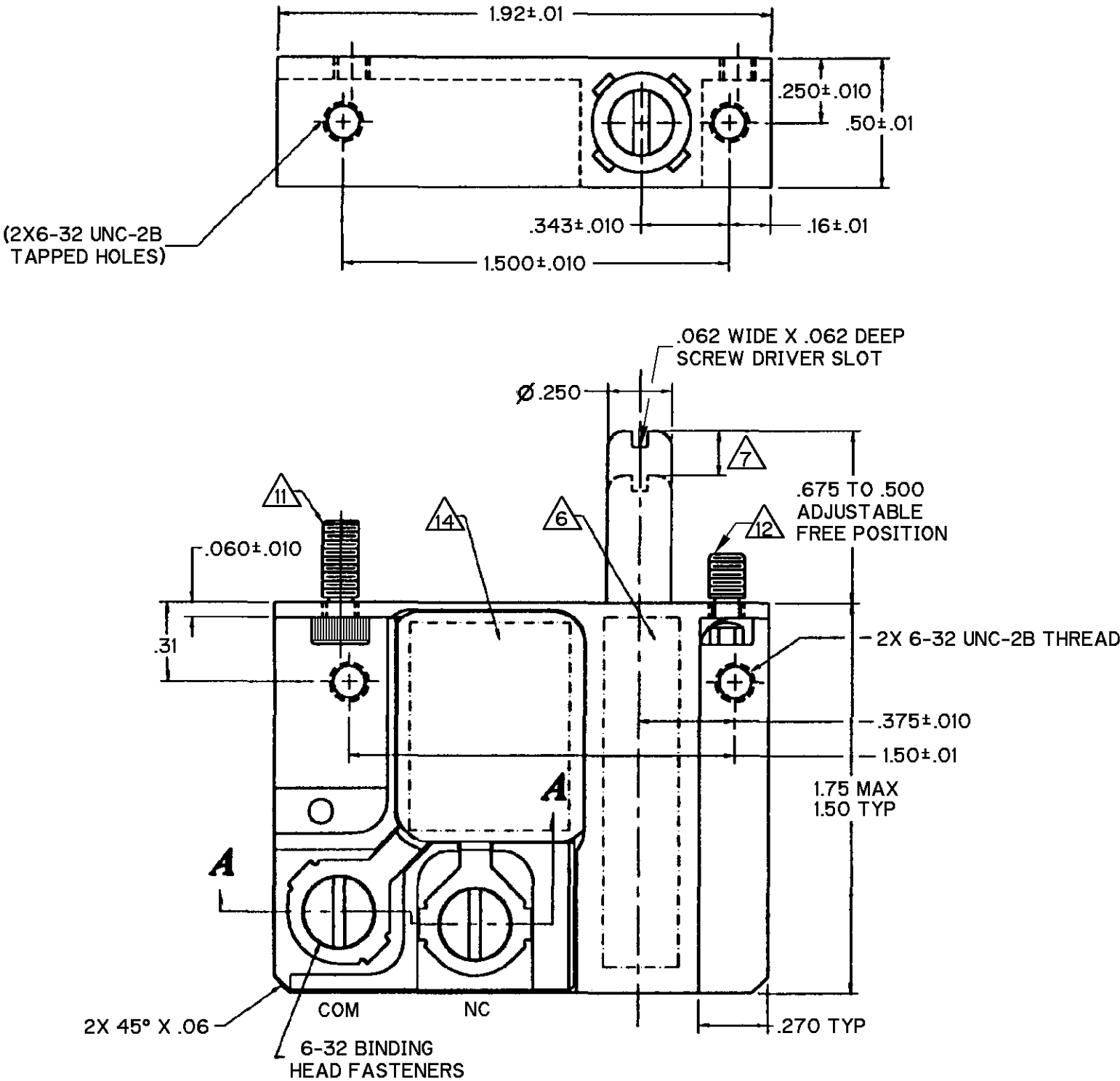
- 1 - HARD ANODIZED ALUMINUM HOUSING, STAINLESS STEEL PLUNGER
2 - SWITCH SEALED WATERTIGHT, TESTED TO +5 PSIG
3 - THERMOPLASTIC MATERIAL(S) SHALL CONFORM TO MIL-M-14 OR MIL-M-24519
4 - FLUROSILICONE SEAL USED FOR PLUNGER SEAL
5 - TEMPERATURE RANGE -65° TO +185°F
6  CIRCUIT DIAGRAM, CATALOG LISTING, AND DATE CODE MARKED ON SWITCH
7  PLUNGER FREE POSITION ADJUSTABLE RANGE
8 - SHOCK: 50g
9 - VIBRATION: 10 - 2000 Hz
10 - MECHANICAL LIFE: 50,000 CYCLES
11  CAPTIVE MOUNTING SCREWS, SPECIAL HEAD 6-32 UNC-3A 0.30 GRIP LENGTH
12  CAPTIVE MOUNTING SCREWS, SPECIAL HEAD 6-32 UNC-3A 0.20 GRIP LENGTH
13 - TERMINAL BLOCK CAN BE MOLDED OR MACHINED WITH TERMINAL BLOCK.
14  COLOR OPTIONAL
14  POTTING TO COVER THIS AREA AND MAY EXTEND HIGHER THAN SURFACE OF HOUSING FLANGE



THIS DRAWING COVERS A PROPRIETARY ITEM AND IS THE PROPERTY OF MICRO SWITCH, A DIVISION OF HONEYWELL. THIS DRAWING IS NOT TO BE COPIED OR USED WITHOUT THE APPROVAL OF MICRO SWITCH

| CHARACTERISTICS | | ELECTRICAL DATA | | |
|-----------------------|------------|--|-----------|-----------|
| OPERATING FORCE | 7±3 LBS | CONTACT ARRANGEMENT | | |
| FULL OVERTRAVEL FORCE | 30 LBS MAX | SPNC(1) | | |
| RELEASE FORCE | 2 LBS MIN | CONTACT MATERIALS: GOLD, OVERLAY AND ALLOY | | |
| PRETRAVEL | .12 MAX | 30 VDC | | |
| DIFFERENTIAL TRAVEL | .020±.010 | LOAD | SEA LEVEL | 50,000 FT |
| OVERTRAVEL | .35 MIN | RES | 1.0 | 1.0 |
| FREE POSITION | | IND | 0.25 | 0.5 |
| | | MAX INRUSH | 2.0 | 2.0 |

| THIRD ANGLE PROJECTION | |
|---|--------------|
| SCALE | NONE |
| DO NOT SCALE PRINT | |
| UNLESS OTHERWISE SPECIFIED TOLERANCES ARE | |
| ONE PLACE | (.0) ±.030 |
| TWO PLACE | (.00) ±.015 |
| THREE PLACE | (.000) ±.005 |
| ANGLES | ± 4° |
| WEIGHT | |



ANSI Y14.5M-1982 APPLIES

Mouser Electronics

Authorized Distributor

Click to View Pricing, Inventory, Delivery & Lifecycle Information:

[Honeywell:](#)

[ML-1329](#)