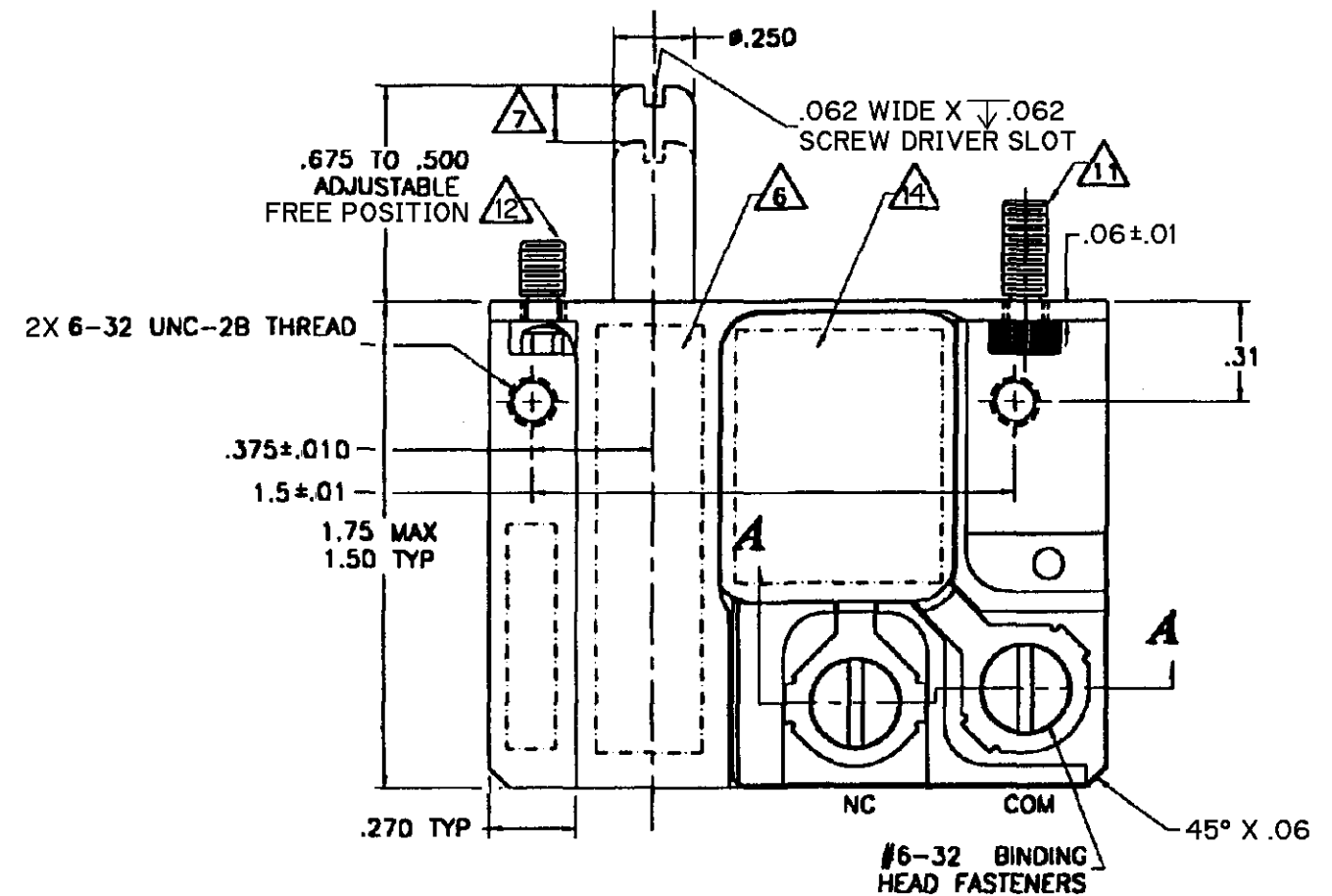
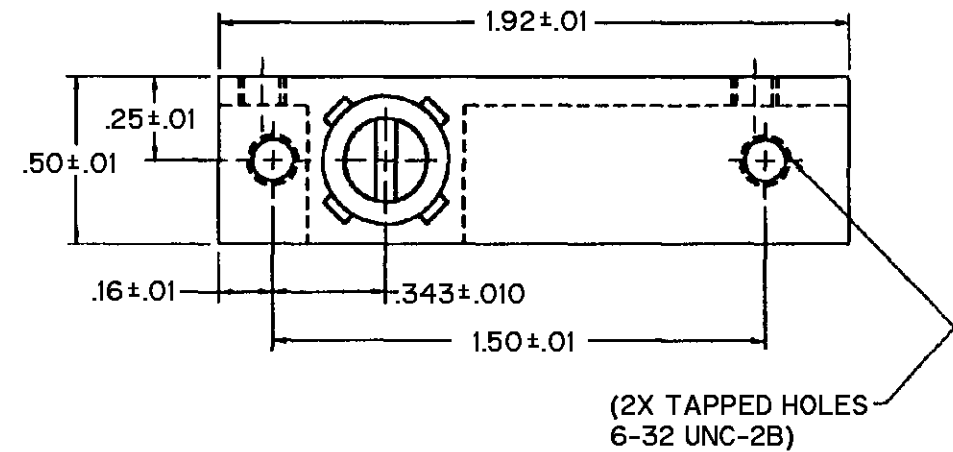


SECTION A-A

NOTES

- 1 - HARD ANODIZED ALUMINUM HOUSING, STAINLESS STEEL PLUNGER
- 2 - SWITCH SEALED WATERTIGHT, TESTED TO +5 PSIG
- 3 - THERMOPLASTIC MATERIAL(S) SHALL CONFORM TO MIL-M-14 OR MIL-M-24519
- 4 - FLUOROSILICONE SEAL, RING USED FOR PLUNGER SEAL
- 5 - TEMPERATURE RANGE: -65°F TO +185°F
- 6 - CIRCUIT DIAGRAM, CATALOG LISTING, AND DATE CODE MARKED ON SWITCH
- 7 - PLUNGER FREE POSITION ADJUSTABLE RANGE
- 8 - SHOCK: 50 G'S
- 9 - VIBRATION: 10 - 2000 Hz
- 10 - MECHANICAL LIFE: 50,000 CYCLES
- 11 - CAPTIVE MOUNTING SCREWS, SPECIAL HEAD 6-32 UNC-3A, .30 GRIP LENGTH
- 12 - CAPTIVE MOUNTING SCREWS, SPECIAL HEAD 6-32 UNC-3A, .20 GRIP LENGTH
- 13 - TERMINAL BLOCK CAN BE MOLDED OR MACHINED WITH TERMINAL BLOCK.
COLOR OPTIONAL
- 14 - POTTING TO COVER THIS AREA AND MAY EXTEND HIGHER THAN SURFACE OF HOUSING FLANGE



THIS DRAWING COVERS A PROPRIETARY ITEM AND IS THE PROPERTY OF MICRO SWITCH, A DIVISION OF HONEYWELL. THIS DRAWING IS NOT TO BE COPIED OR USED WITHOUT THE APPROVAL OF MICRO SWITCH

CHARACTERISTICS

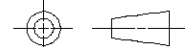
OPERATING FORCE	-----	7±3 LBS
FULL OVERTRAVEL FORCE	--	30 LBS MAX
RELEASE FORCE	-----	2 LBS MIN
PRETRAVEL	-----	.12 MAX
DIFFERENTIAL TRAVEL	--	.020±.010
OVERTRAVEL	-----	.35 MIN

ELECTRICAL DATA

CONTACT ARRANGEMENT
S P N C

CONTACT MATERIALS: GOLD; OVERLAY & ALLOY		
	30 VDC	
LOAD	SEA LEVEL	50,000 FT.
RES	1.0	1.0
IND	0.25	0.5
MAX. INRUSH	2.0	2.0

THIRD ANGLE PROJECTION



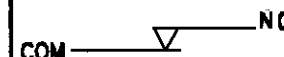
SCALE

DO NOT SCALE PRINT

UNLESS OTHERWISE SPECIFIED TOLERANCES ARE		
ONE PLACE	(.01)	±.030
TWO PLACE	(.00)	±.015
THREE PLACE	(.000)	±.005
ANGLES		±

WEIGHT

CIRCUIT DIAGRAM



ANSI Y14.5M-1982 APPLIES

Mouser Electronics

Authorized Distributor

Click to View Pricing, Inventory, Delivery & Lifecycle Information:

[Honeywell:](#)

[ML-1327](#)