

CATALOG LISTING

ML-1285

PAGE 1 OF 1

REPLACES

PR-24165

CHECK

28SEP07

PSR

27 SEP 99

SAV

CHECK

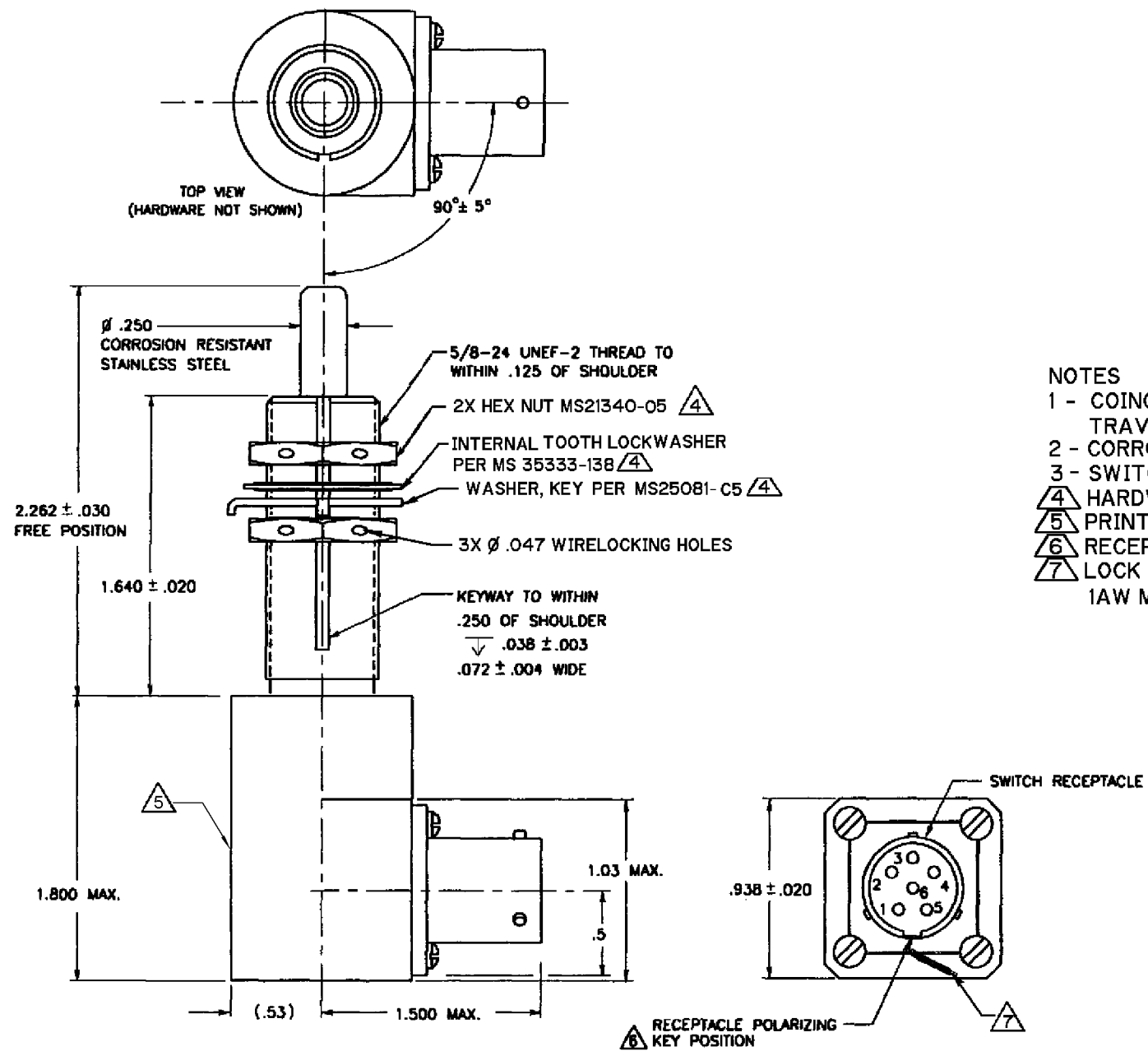
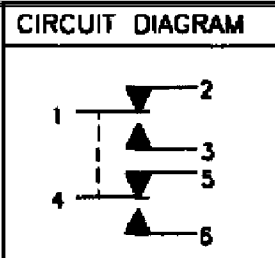
27 SEP 99

DLT

27 SEP 99

RASTER

DRAWN



- NOTES
- 1 - COINCIDENCE OF OPERATING AND RELEASING POINTS .010 OF PLUNGER TRAVEL

2 - CORROSION RESISTANT STEEL ENCLOSURE AND PLUNGER

3 - SWITCH SEALED PER MIL-PRF-8805 SYMBOL 4

4 HARDWARE MAY BE PACKAGED UNASSEMBLED PER MIL-PRF-8805

5 PRINT CIRCUIT DIAGRAM, CATALOG LISTING AND DATE CODE ON NAMEPLATE

6 RECEPTACLE PART NUMBER MS27496E9B35P MATES WITH MS2746719B35S

7 LOCK MOUNTING HARDWARE ON RECEPTACLE USING MS20995 SAFETY WIRE 1AW MS33540

ANSI Y14.5M-1982 APPLIES

THIS DRAWING COVERS A PROPRIETARY ITEM AND IS THE PROPERTY OF MICRO SWITCH, A DIVISION OF HONEYWELL. THIS DRAWING IS NOT TO BE COPIED OR USED WITHOUT THE APPROVAL OF MICRO SWITCH			THIRD ANGLE PROJECTION	
CHARACTERISTICS			SCALE NONE	
OPERATING FORCE ----- 6-12 LBS			DO NOT SCALE PRINT	
FULL OVERTRAVEL ----- 30 LBS MAX			UNLESS OTHERWISE SPECIFIED TOLERANCES ARE	
RELEASE FORCE ----- 4 LBS MIN			ONE PLACE (.0) ±.030	
PRETRAVEL ----- .040 MAX			TWO PLACE (.00) ±.015	
DIFFERENTIAL TRAVEL ----- .020 MAX			THREE PLACE (.000) ±.005	
OVERTRAVEL ----- .500 MIN			ANGLES ± 4°	
ELECTRICAL DATA			WEIGHT 7 OZ MAX	
CONTACT ARRANGEMENT				
2X SPDT				
28 VDC				
LOAD	SEA LEVEL	50,000 FT		
RES	7	4		
IND	4	2.5		

Mouser Electronics

Authorized Distributor

Click to View Pricing, Inventory, Delivery & Lifecycle Information:

[Honeywell:](#)

[ML-1285](#)