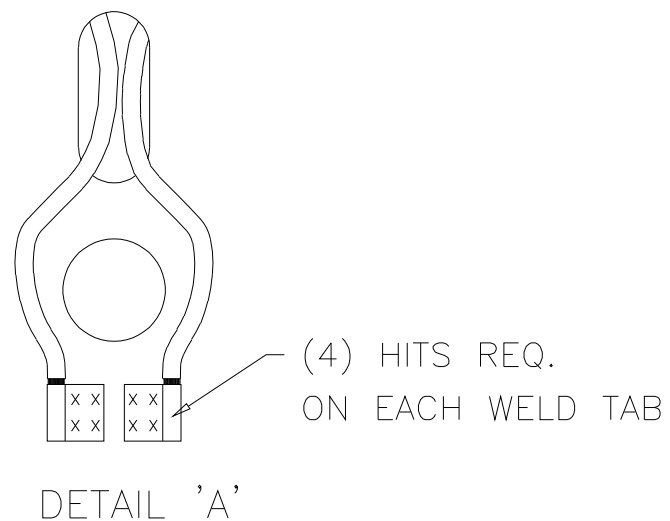



1. ELECTRICAL RATINGS:
120 VAC 203 WATTS
2. RESISTANCE:
69.54MIN. – 70.96NOM. – 72.38MAX.
3. CONSTRUCTION:
KAPTON FILM ENCASING AN
FOIL RESISTANCE ELEMENT
4. LEAD WIRES:
24 AWG, RED TEFLON, UL1180/CSA
LEADS TO BE WELDED AS ILLUSTRATED.
5. DIELECTRIC STRENGTH:
1250 VAC, 1 MIN, 1Ma MAX.
6. MARKING:
ELMWOOD SENSORS
C3400-154
(DATE)
YR/LOT#
7. MONSANTO P/N: C8102046
8. PART TO BE FREE OF ANY
CRINKLES OR FOLDS.
9. PART TO BE FREE OF ANY
VOIDS, BUBBLES OR SURFACE
IRREGULARITIES.



UNLESS OTHERWISE SPECIFIED DIMENSIONS ARE IN INCHES FRACT: DEC: ANGLES: ± .XX ± .005± .XXX±						 ELMWOOD SENSORS INC. 500 Narragansett Park Dr. Pawtucket, RI 02861-4325
MAT'L:						TITLE: <div style="text-align: center; font-size: 1.5em;">HEATER</div>
FINISH:	C	22786	WELDED LEADS WERE SOLDERED	2/25/97	GPS	DRAWN BY: DATE: CAD DWG NO.: MFD 3/25/93 \HEATERS\COMM\3400\154
	B	21042	SEE ECN FOR DETAILS	9/22/94	MFD	DWG NO.: <div style="font-size: 2em;">C3400-154</div>
	A	20346	CHG NOTE #5 FROM 1500 TO 1250 VAC	5/18/93	MFD	
USED ON:	LTR.	ECN	DESCRIPTION	DATE	APPD.	APPROVED: JKS 3/25/93
SCALE: 1 : 1	REVISIONS					CODE IDENT NO: 14604 SH 1 OF 1

Mouser Electronics

Authorized Distributor

Click to View Pricing, Inventory, Delivery & Lifecycle Information:

[Honeywell:](#)

[C3400-154](#)