

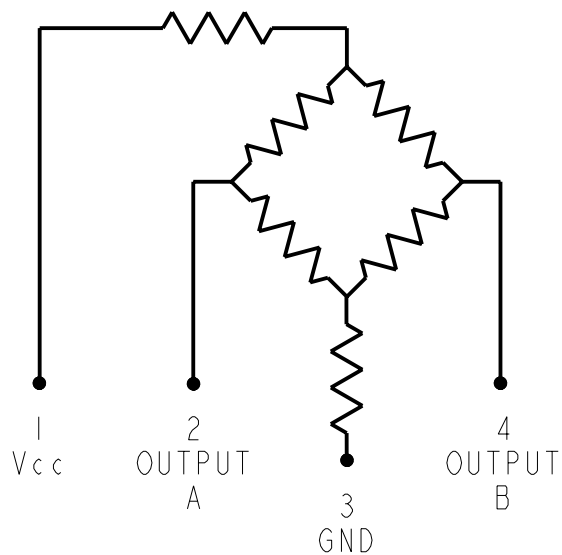
GENERAL OPERATING CHARACTERISTICS				
(ELECTRICAL PERFORMANCE AT 10.00±0.01 VDC EXCITATION, 25°C)				
PRESSURE RANGE (PSI)		0-5		
	MIN	NOM	MAX	UNITS
SPAN (P2>P1) 1	47	50	53	mV
NULL OFFSET	-1.5	0	+1.5	mV
		TYP	MAX	UNITS
LINEARITY (BFSL, P2>P1)		.4	.5	%SPAN
NULL SHIFT (0 TO 25°C, 25 TO 50°C) 2		±.5	±1.0	mV
SPAN SHIFT (0 TO 25°C, 25 TO 50°C) P2>P1 2		±1.0	±1.5	%SPAN
REPEATABILITY AND HYSTERESIS		±.2		%SPAN
OVERPRESSURE (P2>P1; P1>P2)			20	PSI

ALL PRESSURE RANGE	MIN	TYP	MAX	UNITS
EXCITATION VOLTAGE		10	16	VDC
INPUT RESISTANCE	5.5K	7.5K	11.5K	OHMS
OUTPUT RESISTANCE	1.5K	2.5K	3.0K	OHMS
RESPONSE TIME			1.0	ms

TEMPERATURE RANGES	
STORAGE	-55°C TO +100°C (-67°F TO +212°F)
OPERATE	-40°C TO +85°C (-40°F TO +185°F)
COMPENSATED	0 TO +50°C (+32°F TO +122°F)

TERMINATION (5)

CIRCUIT DIAGRAM



OUTPUT "A"
INCREASES AS P2
PRESSURE INCREASES

OUTPUT "B"
DECREASES AS P2
PRESSURE INCREASES

- NOTES
- SPAN IS THE ALGEBRAIC DIFFERENCE BETWEEN OUTPUT AT MINIMUM RATED OPERATING PRESSURE AND OUTPUT AT 0 PSI
 - TEMPERATURE ERROR IS CALCULATED WITH RESPECT TO 25°C
 - INPUT MEDIA LIMITED ONLY TO THOSE MATERIALS THAT WILL NOT ATTACK SILICON, THE HOUSING MATERIAL OR SEAL MATERIAL
 - PIN 1 IS IDENTIFIED BY RED WIRE
 - SENSOR IS OPERATIONAL OVER VACUUM PRESSURE RANGE
 - RATIOMETRIC TO SUPPLY VOLTAGE
 - CATALOG LISTING AND DATE CODE HERE. CATALOG LISTING BRAND IS 6BF5G38. ALTERNATE FORMAT OF CATALOG LISTING BRAND IS THE ENTIRE CATALOG LISTING

THIS DRAWING COVERS A PROPRIETARY ITEM AND IS THE PROPERTY OF MICRO SWITCH, A DIVISION OF HONEYWELL. THIS DRAWING IS NOT TO BE COPIED OR USED WITHOUT THE APPROVAL OF MICRO SWITCH.

MICRO SWITCH
a Honeywell Division

BRIDGE PRESSUER SENSOR

CATALOG LISTING

26PCBFG5G38

THIRD ANGLE PROJECTION			
SCALE 2 : 1			
DO NOT SCALE PRINT			
UNLESS OTHERWISE SPECIFIED TOLERANCES ARE			
ONE PLACE	(.0)	±.030	
TWO PLACES	(.00)	±.015	
THREE PLACES	(.000)	±.005	
ANGLES		±	
WEIGHT			

Mouser Electronics

Authorized Distributor

Click to View Pricing, Inventory, Delivery & Lifecycle Information:

[Honeywell:](#)

[26PCBFG5G38](#)