

MICRO SWITCH

A DIVISION OF HONEYWELL-ROCKWELL REGULATOR COMPANY,
BREEPORT, ILLINOIS

FED. MFR. CODE 91929

SWITCH-ENCLOSED

CATALOG LISTING
105 ML1 5

(M) 105 ML1
ISSUE 5

REPLACES

RELEASE NO.

CHECK

CHECK

CHECK

CHECK

DRAWN

105 ML1

M

DRAWING
NUMBER

X

10

ISSUE

REVISIONS

A CO11247

O. M. W.

4 MAR 58

B CO12789

M. B. F.

13 MAY 58

C CO28064

M. B. S.

25 JUNE 69

D CO55051-B

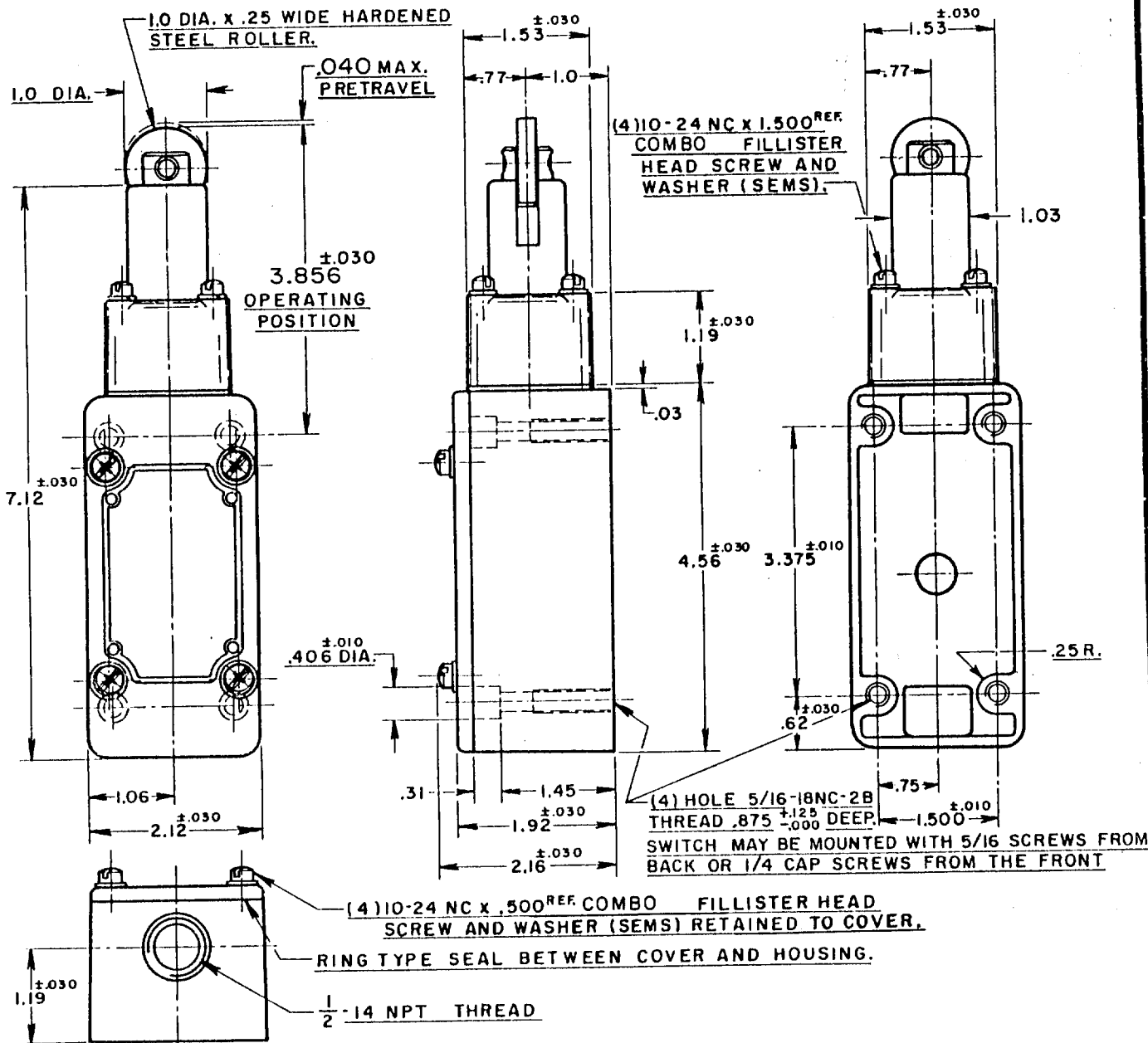
J. A. P.

17 DEC 84

E CO74287

G. J. W.

22 APR 93



THIS DRAWING COVERS A PROPRIETARY ITEM AND IS THE PROPERTY OF MICRO SWITCH, A DIVISION OF HONEYWELL. THIS DRAWING IS NOT TO BE COPIED OR USED WITHOUT THE APPROVAL OF MICRO SWITCH.

CHARACTERISTICS

OPERATING FORCE --- 6 LBS. APPROX.

RELEASE FORCE --- 4 LBS. APPROX.

DIFFERENTIAL TRAVEL --- .020 MAX.

OVERTRAVEL --- .500 MIN.

FREE PLAY --- .010 MAX.

SWITCH-BASIC REPLACEMENT --- 1MNI

ELECTRICAL DATA

CONTACT ARRANGEMENT
TWO CIRCUIT DOUBLE THROW
DOUBLE BREAK

BREAK DISTANCE

10A-120, 240, 480, OR 600 VAC
1/2 HP-120 VAC; 1 HP-240 VAC
0.8 A-115 VDC; 0.4 A-230 VDC
PILOT DUTY: 600 VAC MAX

®



SCALE 1/2 TO 1

DO NOT SCALE PRINT

UNLESS OTHERWISE
SPECIFIED

DIMENSIONS ARE IN INCHES

TOLERANCES ARE:

ONE PLACE	(.0)	±.030
TWO PLACE	(.00)	±.015
THREE PLACE	(.000)	±.008
ANGLES		±

WEIGHT

Mouser Electronics

Authorized Distributor

Click to View Pricing, Inventory, Delivery & Lifecycle Information:

[Honeywell:](#)

[105ML1](#)