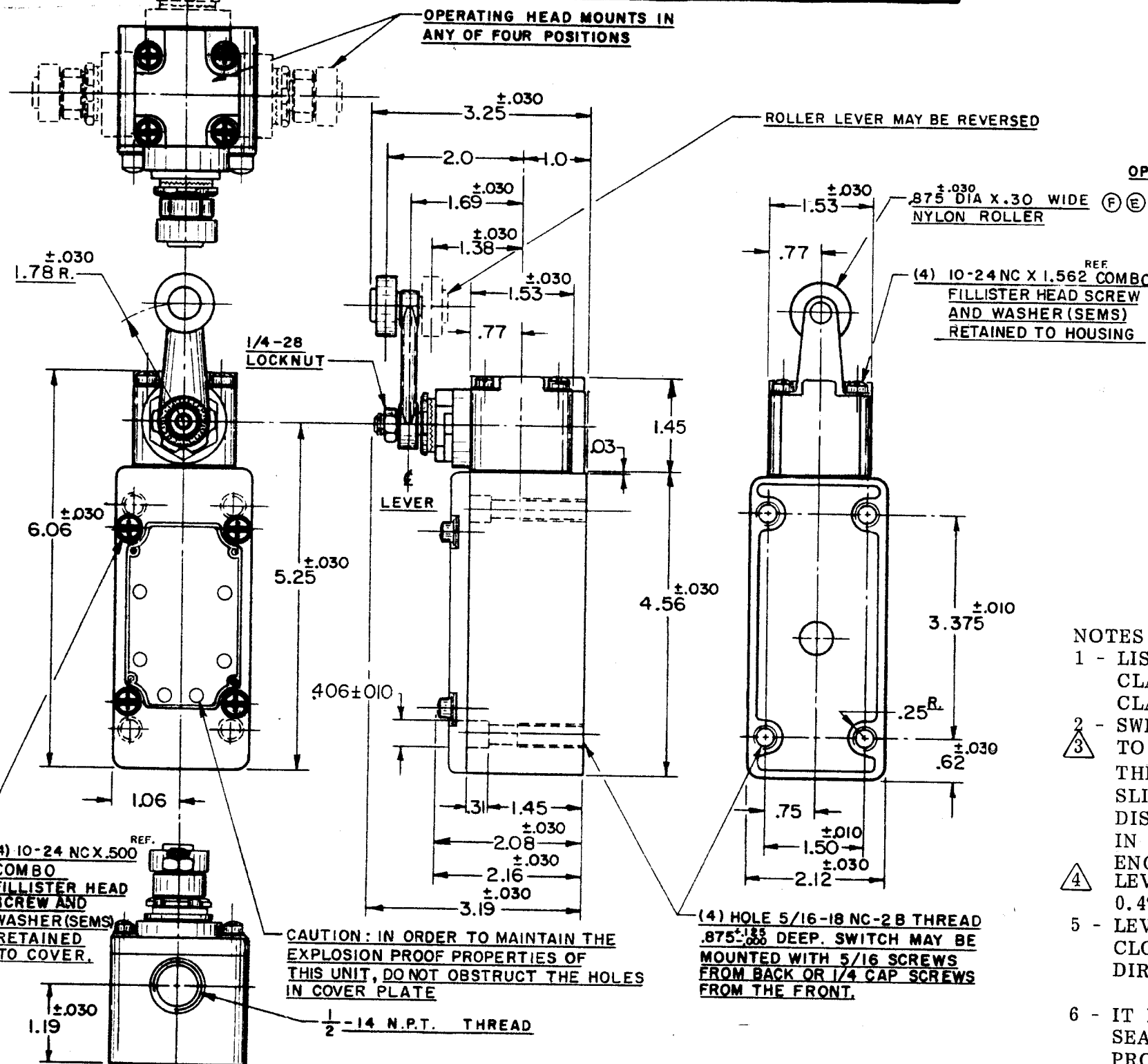


51ML1-E1
DRAWING NUMBER
15
ISSUE
15
REVISIONS
A CO11247 O.M.W. 13 MAR 58
B CORR. O.M.W. MAY 58
C CO12789 M.B.F. 19 MAY 58
D CO13022 M.B.F. 13 AUG 58
E CO18841 O.M.W. 3 NOV 64
F CO20578 M.B.F. DEC 65
G CO24575 M.B.S. 10 SEP 68
H CO52194 G.J.W. 23 SEP 83
J CO58367 JAS. 11 NOV 85
K CO58051-C O.M.W. 13 MAR 88
L CO63738 JAS. 11 NOV 85
M CO74287 G.J.W. 13 APR 93
O.M.W. 13 MAR 88



NOTES

- 1 - LISTED BY UNDERWRITERS LABORATORY, INC. FOR USE IN CLASS 1, GROUPS C AND D VAPOR - AIR ATMOSPHERE, AND CLASS 2 GROUPS E, F AND G DUST - AIR ATMOSPHERES
- 2 - SWITCH IS ASSEMBLED FOR ACTUATION IN EITHER DIRECTION TO CONVERT SWITCH FOR ACTUATION EITHER IN THE CLOCKWISE OR THE COUNTERCLOCKWISE DIRECTION ONLY, REMOVE THE HEAD AND SLIDE THE CAN TOWARD THE REAR OF THE HEAD SUFFICIENTLY TO DISENGAGE FROM THE FLATS ON THE SHAFT. ROTATE THE CAM 90° IN THE OPPOSITE DIRECTION OF THE ACTUATION DESIRED AND RE-ENGAGE THE CAM WITH THE FLATS ON THE SHAFT
- 3 - LEVER MAY BE POSITIVELY LOCKED AT INTERVALS OF APPROX 0.4° (870 POSITIONS)
- 4 - LEVER MAY BE ADJUSTED TO ACTUATE THE SWITCH IN THE CLOCKWISE DIRECTION ONLY, THE COUNTER-CLOCKWISE DIRECTION ONLY, OR IN BOTH DIRECTIONS
- 5 - IT IS ESSENTIAL THAT THE CONDUIT OPENING BE PROPERLY SEALED IN ORDER TO MAINTAIN THE EXPLOSION PROOF PROPERTIES

CHARACTERISTICS

OPERATING FORCE ----- 3 LBS. MAX.
FULL OVERTRAVEL FORCE ----- 4 LBS. MAX.
RELEASE FORCE ----- 1/4 LB. MIN.
PRETRAVEL ----- ③ ----- 12° MAX.
DIFFERENTIAL TRAVEL ----- ④ ----- 4° MAX.
OVERTRAVEL ----- ⑤ ----- 60° MIN.

SWITCH-BASIC REPLACEMENT ----- 1MK1

ELECTRICAL DATA

CONTACT ARRANGEMENT
S. P. D. T.

② 20A-120, 240 OR 480 VAC; 3/4 H.P.-120 VAC
1 1/2 H.P.-240 VAC; 1/2 A-115 VDC; 1/4 A-230 VDC
PILOT DUTY; 720VA-HEAVY DUTY
600 VAC MAX

SCALE 1/2 TO 1

DO NOT SCALE PRINT

UNLESS OTHERWISE SPECIFIED
DIMENSIONS ARE IN INCHES

TOLERANCES ARE:

ONE PLACE (.0) ±.030
TWO PLACE (.00) ±.015
THREE PLACE (.000) ±.005
ANGLES ±

WEIGHT

Mouser Electronics

Authorized Distributor

Click to View Pricing, Inventory, Delivery & Lifecycle Information:

[Honeywell:](#)

[51ML1-E1](#)