

MICRO SWITCH

A DIVISION OF MINNEAPOLIS-HONEYWELL REGULATOR COMPANY

PERDUE, ALABAMA

FED. MFR. CODE 91929

ACTUATOR-SWITCH

CATALOG LISTING

JX-42

5

JX-42

M

DRAWING
NUMBER

28

X 5

ISSUE

3

REPLACES

RELEASE NO. SR-8368

CHECKED 20 JUL 59

CHECK

24 JUNE 59

CHECK

BTG

CHECK

17 MAY 80

CHECK

22 APR 93

CHECK

23 JUL 59

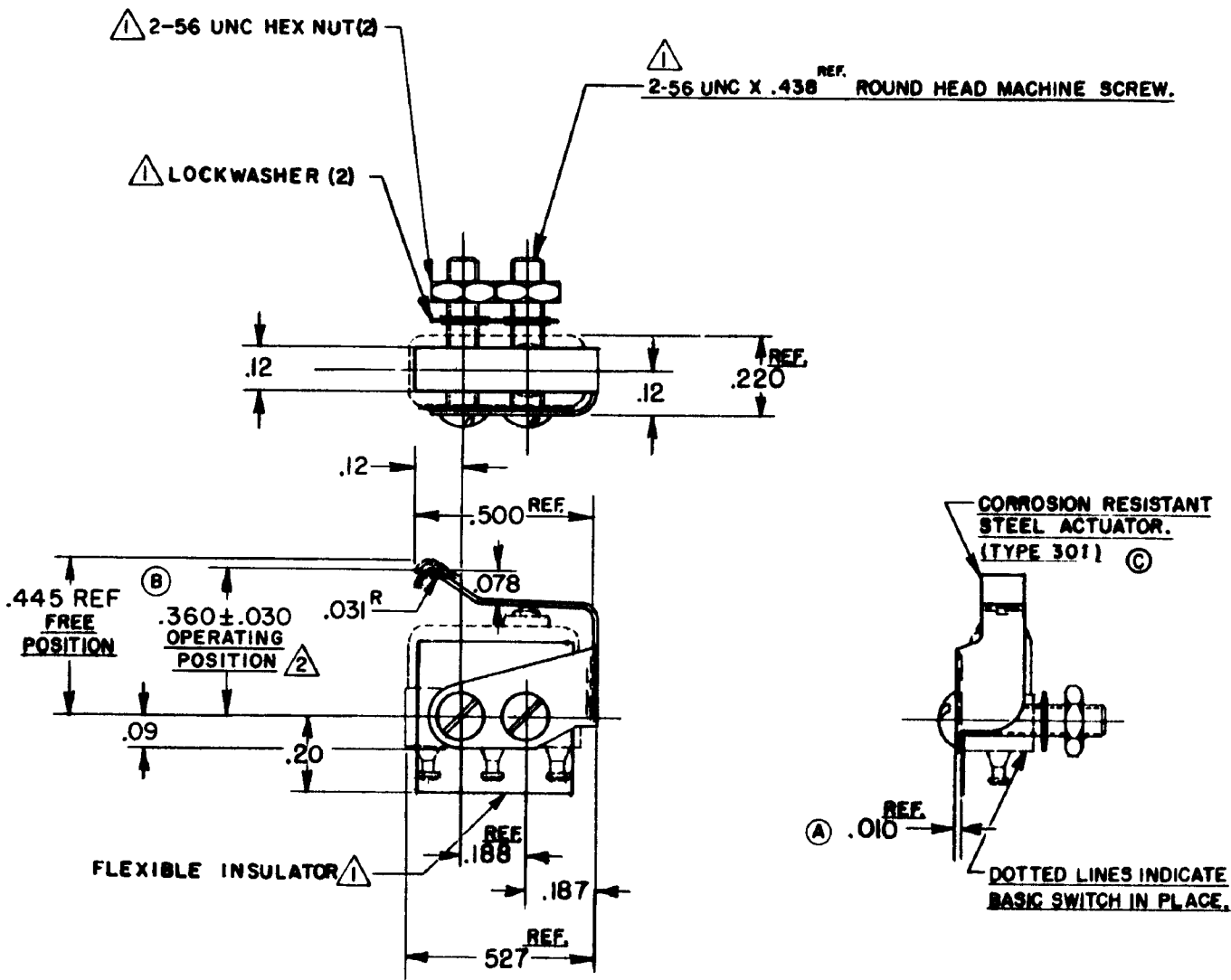
CHECK

24 JUNE 59

CHECK

NHL

DRAWN



NOTE-



FURNISHED UNASSEMBLED.

SLIGHT ROTATION BETWEEN BASIC AND ACTUATOR MAY BE NECESSARY TO OBTAIN OPERATING POSITION

THIS DRAWING COVERS A PROPRIETARY ITEM AND IS THE PROPERTY OF MICRO SWITCH, A DIVISION OF MINNEAPOLIS-HONEYWELL REGULATOR CO. THIS DRAWING IS NOT TO BE COPIED OR USED WITHOUT THE APPROVAL OF MICRO SWITCH.

CHARACTERISTICS WITH ISX1-T BASIC SWITCH INSTALLED

OPERATING FORCE ----- 10 OZ. MAX.
RELEASE FORCE ----- 2 OZ. MIN.
DIFFERENTIAL TRAVEL ----- .025 MAX.
OVERTRAVEL ----- .015 MIN.

ELECTRICAL DATA

CONTACT ARRANGEMENT

BREAK DISTANCE

SCALE 2 TO 1

DO NOT SCALE PRINT

UNLESS OTHERWISE SPECIFIED
DIMENSIONS ARE IN INCHES
TOLERANCES ARE:
ONE PLACE (.0) ±.030
TWO PLACE (.00) ±.015
THREE PLACE (.000) ±.005
ANGLES ±

WEIGHT

Mouser Electronics

Authorized Distributor

Click to View Pricing, Inventory, Delivery & Lifecycle Information:

[Honeywell:](#)

[JX-42](#)