

MICRO SWITCH

A DIVISION OF MINNEAPOLIS-HONEYWELL REGULATOR COMPANY
FREEPORT, ILLINOIS

FED. MFR. CODE 91929

ACTUATOR - SWITCH

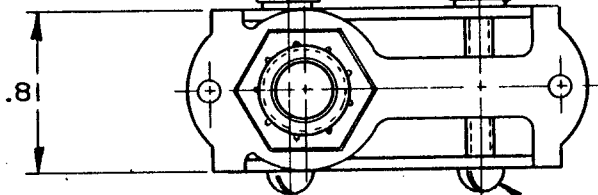
CATALOG LISTING

MCD7711

6-32 NC ST'D HEX NUT (AN 340-6) (2)

LOCKWASHER

(AN 936-A6) (2)



6-32 NC X 1.000 REF ROUND HEAD
MACHINE SCREW
(AN 515-6-16) (2)

2.812 MAX
FREE
POSITION

2.719 ± .045
OPERATING
POSITION

1.75

15/32-32 NS THREAD TO WITHIN .094 OF
SHOULDER

HEX NUT .56 ACROSS FLATS X .08 THICK (2)

LOCKNUT .62 ACROSS FLATS X .09 THICK (2)

.56 DIA SHOULDER

(B)

.95

.81

.06

DOTTED LINES INDICATE
BASIC SWITCH IN PLACE

1.000 REF

.53

2.07

NOTE -

⚠ FURNISHED UNASSEMBLED

2 - ACTUATOR WILL PERFORM SATISFACTORILY IN TEMPERATURES TO MINUS 65° F

THIS DRAWING COVERS A PROPRIETARY ITEM AND IS THE PROPERTY OF MICRO SWITCH, A DIVISION OF MINNEAPOLIS-HONEYWELL REGULATOR CO. THIS DRAWING IS NOT TO BE COPIED OR USED WITHOUT THE APPROVAL OF MICRO SWITCH.

CHARACTERISTICS

FULL OVERTRAVEL FORCE --- 5 1/2 LB MAX
OVERTRAVEL --- .719 MIN

ELECTRICAL DATA

CONTACT ARRANGEMENT

BREAK DISTANCE

SCALE FULL

DO NOT SCALE PRINT

UNLESS OTHERWISE
SPECIFIED

DIMENSIONS ARE IN INCHES

TOLERANCES ARE:

ONE PLACE	(.0)	±.030
TWO PLACE	(.00)	±.015
THREE PLACE	(.000)	±.005
ANGLES		±

WEIGHT

MCD7711

M

DRAWING
NUMBER

88

ISSUE

7

REVISIONS

A	CO14866
	OMW
	20 SEP 60
B	CO16924
	OMW
	10 APR 62
C	CO
	79303
	SAD
	6 MAR 95

REPLACES

RELEASE NO.

CHECK

CHECK

CHECK

CHECK

CHECK

CHECK

CHECK

CHECK

CHECK

CHECK

CHECK

CHECK

Mouser Electronics

Authorized Distributor

Click to View Pricing, Inventory, Delivery & Lifecycle Information:

[Honeywell:](#)

[MCD7711](#)