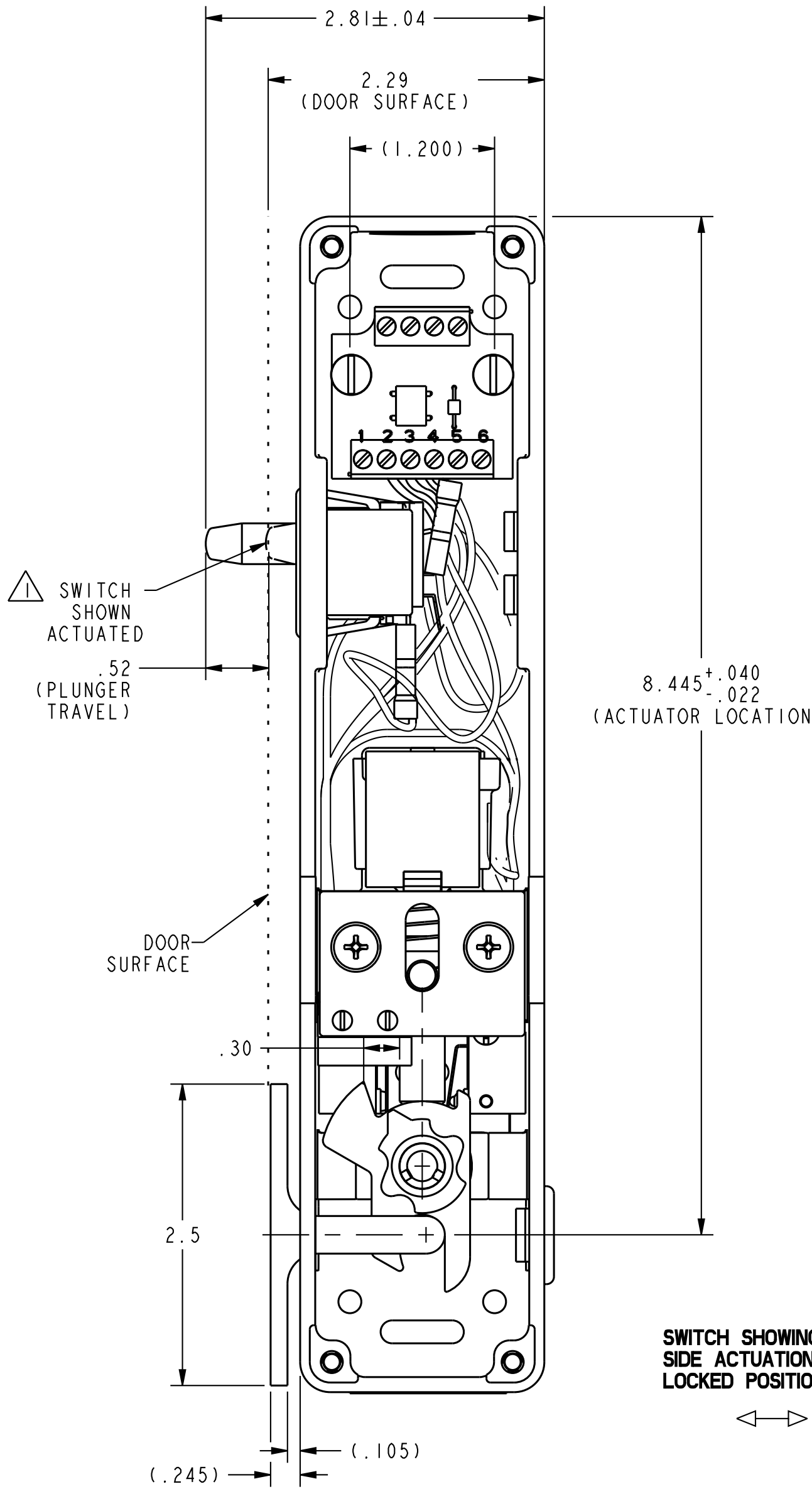
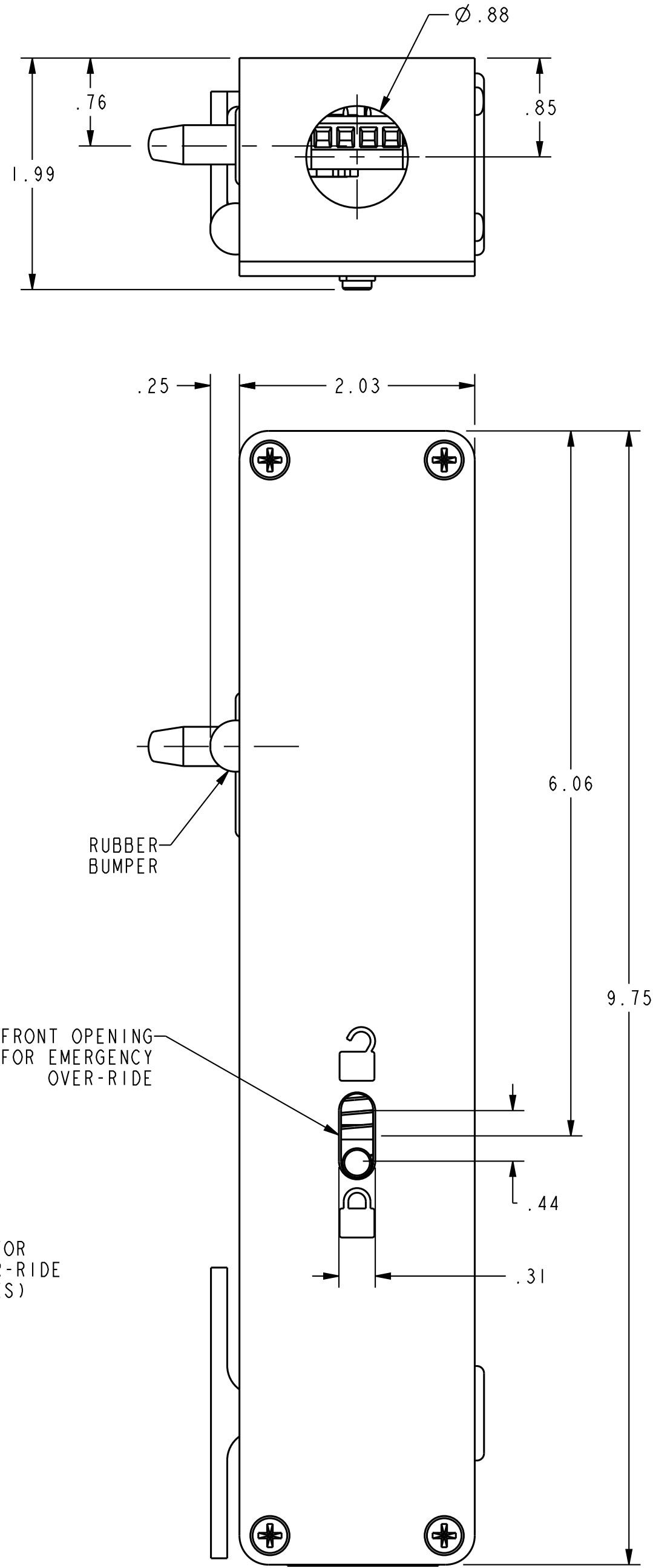
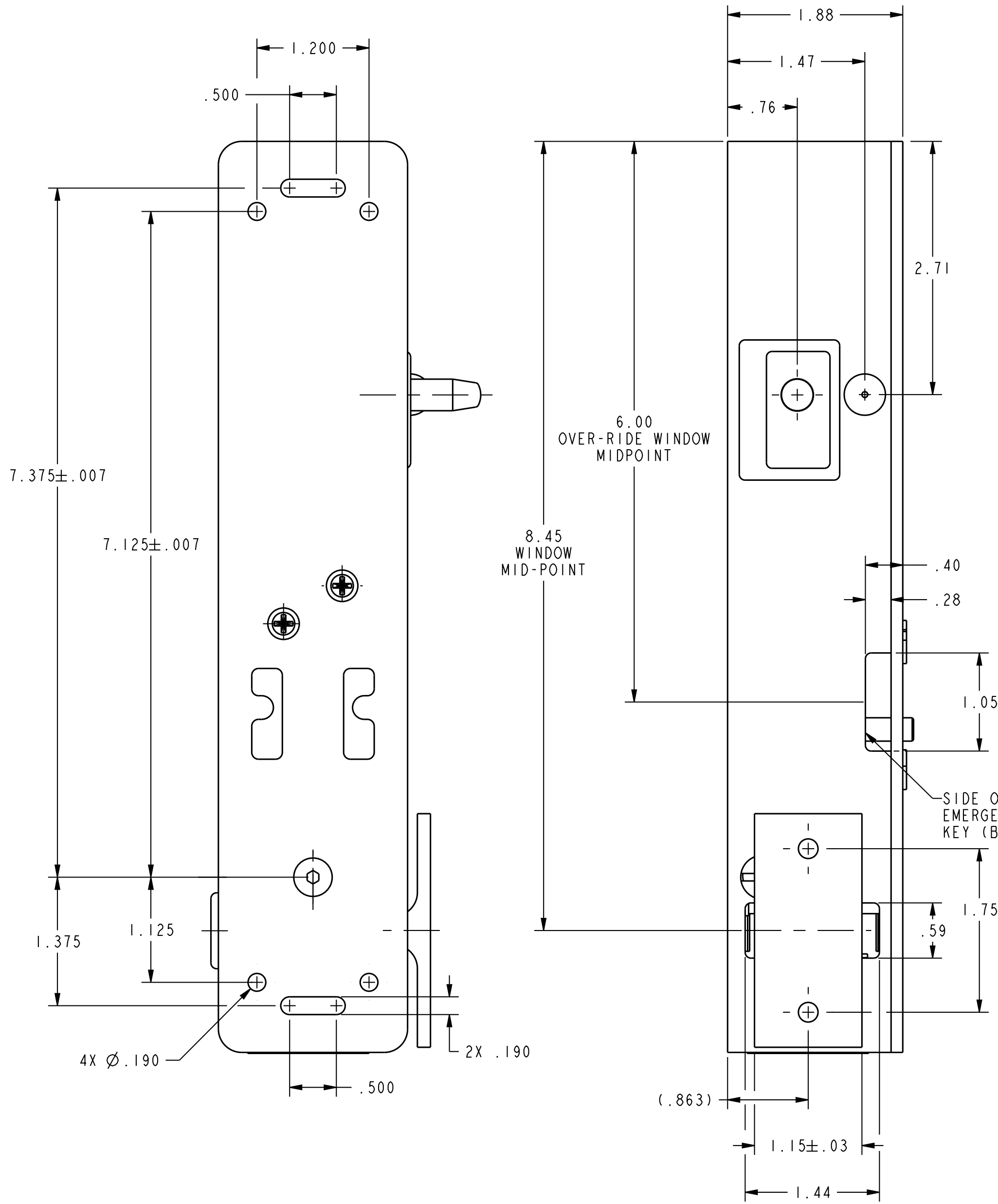
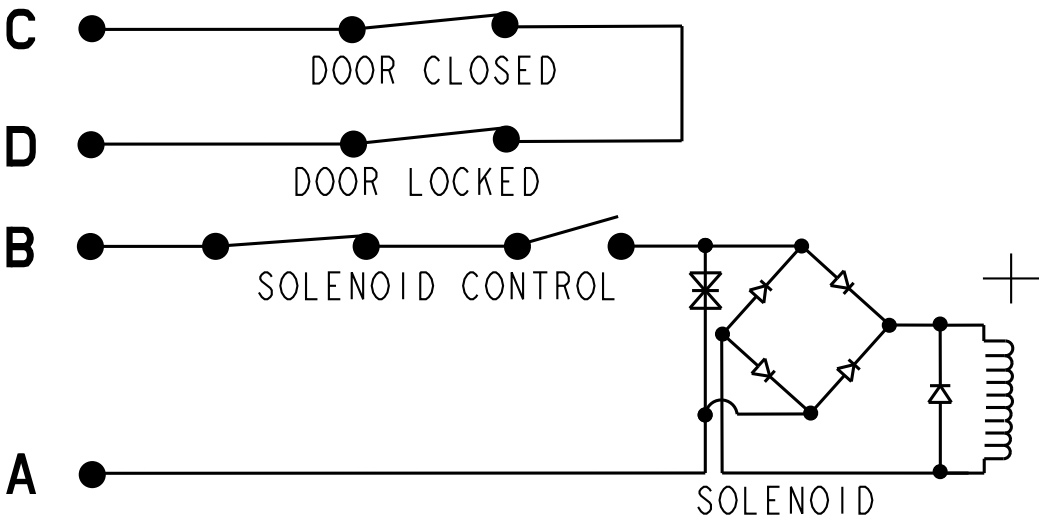



PART NUMBER
CDILBS1W

REVISION HISTORY					
REV	DOCUMENT	DESCRIPTION	CHG'D BY	DATE	APPROVED
A	0075412	RELEASE PER ECO	NMN	2012-12-12	K. BALAJI

ELECTRICAL SCHEMATIC



APPROVALS			
APPROVALS COVERAGE	UL104/ASME17.1/CSA B44.1 FOR COMMERCIAL USE		
ELECTRICAL RATINGS			
VOLTAGE	24 VAC	24 VDC	
CURRENT	0.35A, 60Hz	0.2A	
ENVIRONMENTAL			
OPERATING TEMPERATURE	+4° TO +38°C (+40° TO +100°F)		
STORAGE TEMPERATURE	-40° TO 60° C (-40° TO +140°F)		
MATERIAL OF CONSTRUCTION			
ACTUATOR KEY	INVESTMENT CAST STAINLESS STEEL WITH POWDER COAT FINISH WHITE COLOR		
CAM	INVESTMENT CAST STAINLESS STEEL		
COVER	DIE CAST ZINC WITH POWDER COAT FINISH WHITE COLOR		
HOUSING	DIE CAST ZINC WITH POWDER COAT FINISH WHITE COLOR		

UNLESS OTHERWISE SPECIFIED		THIRD ANGLE PROJECTION		Honeywell				
DIMENSIONS ARE IN INCHES				TITLE SWITCH, ASSEMBLY				
DECIMAL TOL								
NO PLACE --- ±.400								
1 PLACE --- ±.030								
2 PLACE --- ±.010								
3 PLACE --- ±.005								
ANGULAR TOL - ±2° CHAMFER - ±3°								
MATERIAL		-		SIZE	CAGE CODE	DWG NO	TYPE	REV
				D	-	CDILBS1W	I	A
FINISH		-		SCALE	1 : 1	REF WT: -	SHEET	1 of 1
				RELEASE DATE	2012-12-05			
				DRW: K. NAVEEN	2012-12-05			
APPLICABLE DOCUMENTS: ASME Y14.100-2004				RDE: K. BALAJI	2012-12-05			
ASME Y14.5-2009				QA: -	-			
COMPUTER GENERATED DRAWING: PRO/ENGINEER				CHK: K. BALAJI	2012-12-05			
				HONEYWELL CONFIDENTIAL				
				THIS DOCUMENT CONTAINS PROPRIETARY INFORMATION AND SUCH INFORMATION MAY NOT BE DISCLOSED TO OTHERS FOR ANY PURPOSE, NOR USED FOR MANUFACTURING PURPOSES WITHOUT WRITTEN PERMISSION FROM HONEYWELL				

THIS DOCUMENT CONTAINS PROPRIETARY INFORMATION AND SUCH INFORMATION MAY NOT BE DISCLOSED TO OTHERS FOR ANY PURPOSE, NOR USED FOR MANUFACTURING PURPOSES WITHOUT WRITTEN PERMISSION FROM HONEYWELL

Mouser Electronics

Authorized Distributor

Click to View Pricing, Inventory, Delivery & Lifecycle Information:

[Honeywell:](#)

[CDILBS1W](#)