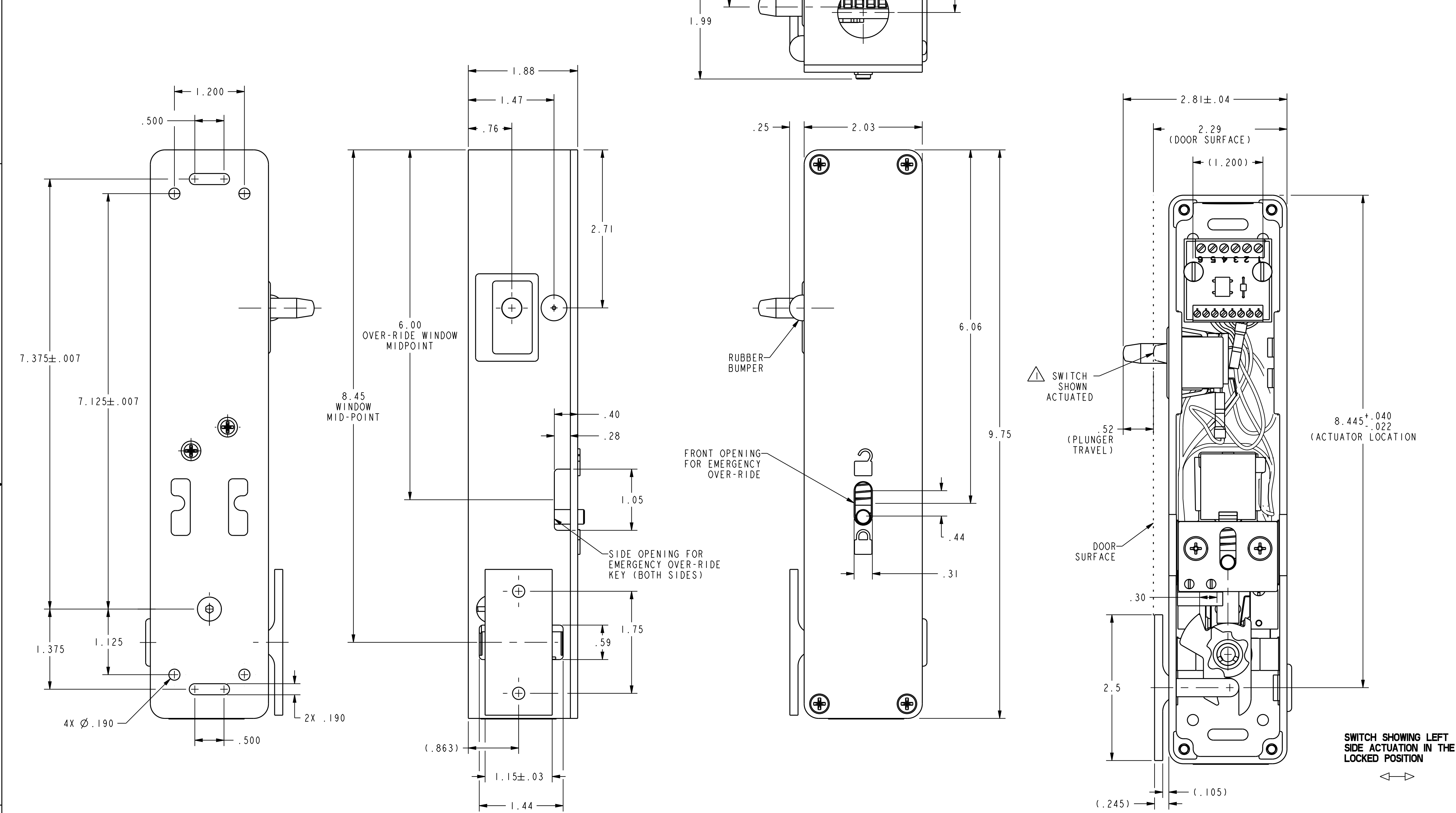
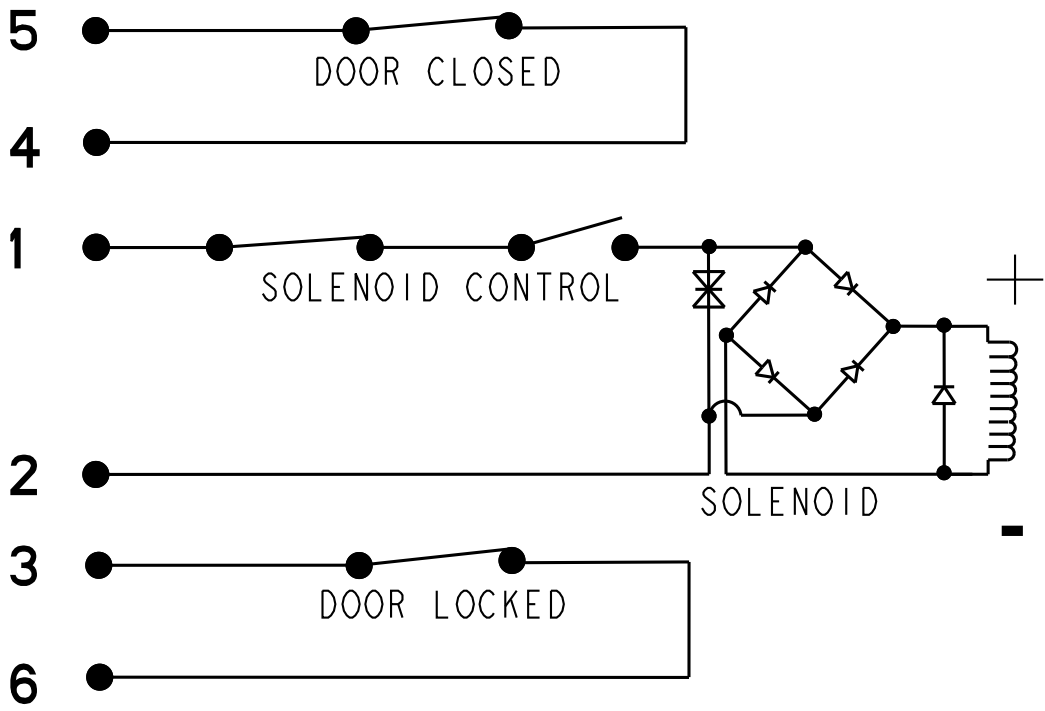


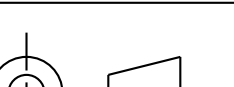
PART NUMBER  
CDILBP1W

REVISION HISTORY					
REV	DOCUMENT	DESCRIPTION	CHG'D BY	DATE	APPROVED
A	0075457	RELEASE PER ECO	NMN	2012-12-11	K. BALAJI

ELECTRICAL SCHEMATIC



APPROVALS			
APPROVALS COVERAGE	UL104/ASME17.1/CSA B44.1 FOR COMMERCIAL USE		
ELECTRICAL RATINGS			
VOLTAGE	24 VAC	24VDC	
CURRENT	0.35A 60Hz	0.2A	
ENVIRONMENTAL			
OPERATING TEMPERATURE	+4° TO +38°C (+40° TO +100°F)		
STORAGE TEMPERATURE	-40° TO 60° C (-40° TO +140°F)		
MATERIAL OF CONSTRUCTION			
ACTUATOR KEY	INVESTMENT CAST STAINLESS STEEL WITH POWDER COAT FINISH WHITE COLOR		
CAM	INVESTMENT CAST STAINLESS STEEL		
COVER	DIE CAST ZINC WITH POWDER COAT FINISH WHITE COLOR		
HOUSING	DIE CAST ZINC WITH POWDER COAT FINISH WHITE COLOR		

UNLESS OTHERWISE SPECIFIED		THIRD ANGLE PROJECTION		Honeywell				
DIMENSIONS ARE IN INCHES				TITLE				
DECIMAL TOL				SWITCH, ASSEMBLY				
NO PLACE --- ±.400								
1 PLACE --- ±.030								
2 PLACE --- ±.010								
3 PLACE --- ±.005								
ANGULAR TOL - ±2° CHAMFER - ±3°								
MATERIAL				SIZE	CAGE CODE	DWG NO	TYPE	REV
				D	-	CDILBP1W	I	A
FINISH				SCALE	1 : 1	REF WT: -	SHEET	1 of 1
				RELEASE DATE	2012-12-05		<b>HONEYWELL CONFIDENTIAL</b> THIS DOCUMENT CONTAINS PROPRIETARY INFORMATION AND SUCH INFORMATION MAY NOT BE DISCLOSED TO OTHERS FOR ANY PURPOSE, NOR USED FOR MANUFACTURING PURPOSES WITHOUT WRITTEN PERMISSION FROM HONEYWELL	
				DRW: K. NAVEEN	2012-12-05			
				RDE: K. BALAJI	2012-12-05			
				QA: -	-			
				CHK: K. BALAJI	2012-12-05			
APPLICABLE DOCUMENTS: ASME Y14.100-2004 ASME Y14.5-2009				COMPUTER GENERATED DRAWING: PRO/ENGINEER				

# Mouser Electronics

Authorized Distributor

Click to View Pricing, Inventory, Delivery & Lifecycle Information:

[Honeywell:](#)

[CDILBP1W](#)