

MICRO SWITCH

FREEPORT ILLINOIS, U S A

A DIVISION OF HONEYWELL

FED. MFG. CODE 91929

ASSEMBLY-**PUSHBUTTON SWITCH**

CATALOG LISTING

IPB587**IPB587****M**DRAWING
NUMBER

ISSUE

REPLACES

RELEASE NO. PR-15634

CHECK

REVISIONS

CHECK

26 MAY 87

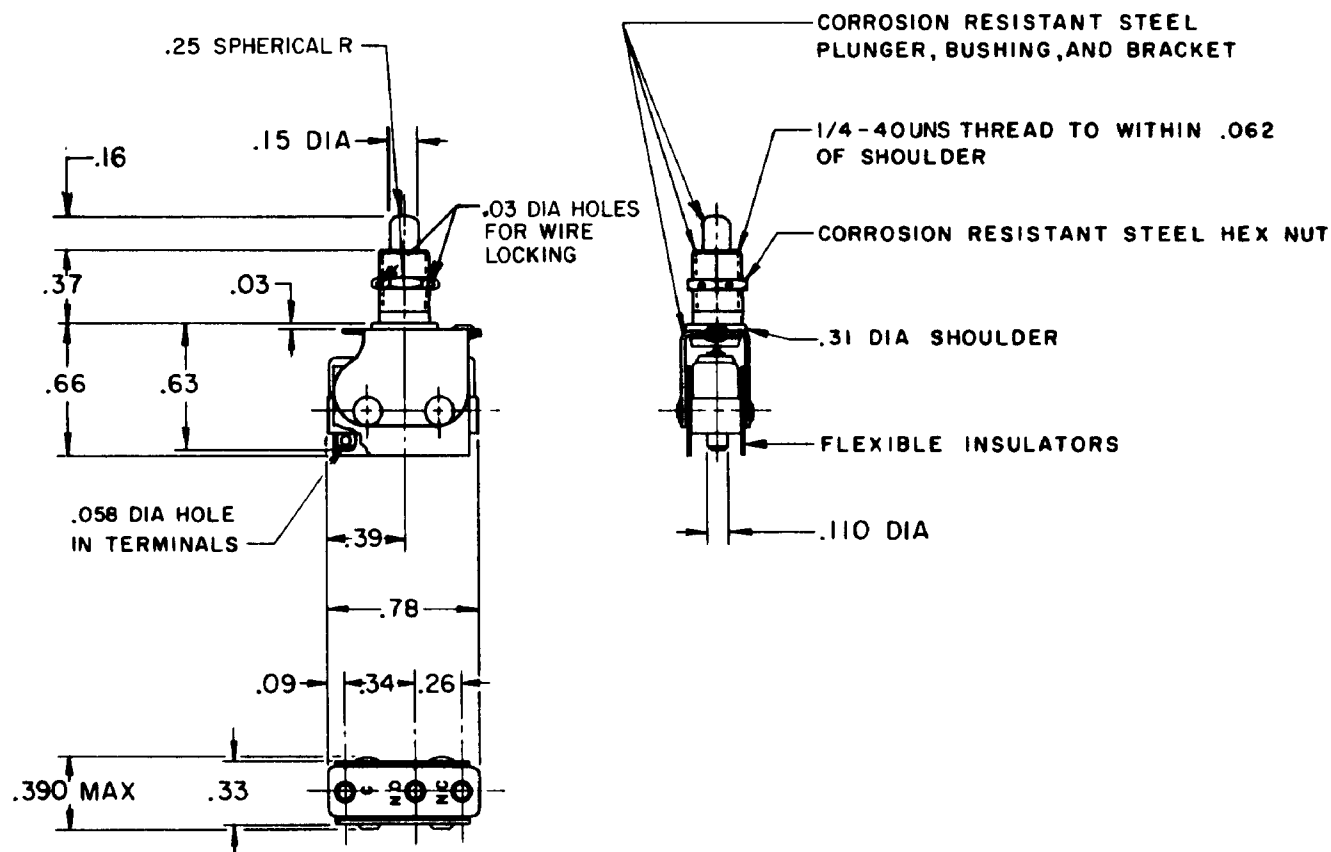
CHECK

87

J A S 121 MAY 87

DRAWN

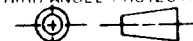
FO-52848-A

**NOTE -**

- 1 - UNIT INCLUDES "12SM83" TYPE BASIC SWITCH
- 2 - TERMINALS ARE PLATED FOR SOLDERING
- 3 - RECOMMENDED FOR MANUAL OPERATION ONLY

THIS DRAWING COVERS A PROPRIETARY ITEM AND IS THE PROPERTY OF MICRO SWITCH, A DIVISION OF HONEYWELL. THIS DRAWING IS NOT TO BE COPIED OR USED WITHOUT THE APPROVAL OF MICRO SWITCH.

THIRD ANGLE PROJECTION

**CHARACTERISTICS**

OPERATING FORCE ----- 2 LBS MAX
OVERTRAVEL FORCE ----- 2.5 LBS MAX
RELEASE FORCE ----- 2 OZ MIN
DIFFERENTIAL TRAVEL ----- .031 MAX
OVERTRAVEL ----- .100 MIN

ELECTRICAL DATA

CONTACT ARRANGEMENT
S P D T

30 VOLTS DC RATING

INDUCTIVE ----- SEA LEVEL - 1/2 AMP
50,000 FT - 1/2 AMP
RESISTIVE ----- SEA LEVEL - 1 AMP
50,000 FT - 1 AMP
MAXIMUM INRUSH ----- 2 AMP

SCALE FULL

DO NOT SCALE PRINT

TOLERANCES
APPLY TO DESIGN UNITS. CONVERSIONS ARE ONLY FOR
REFERENCE UNLESS NOTED. TOLERANCES ARE ±

	DIM	TOL	DIM	TOL
	mm	mm/in	in	mm/in
NO PLACES	X	1/64	X	0.015
ONE PLACE	X, X	0.001/0.015	X, X	0.001/0.015
TWO PLACES	X, XX	0.0005/0.001	X, XX	0.0005/0.001
THREE PLACES	X, XXX	0.0001/0.0005	X, XXX	0.0001/0.0005
ANGLES				

DESIGN UNITS ☐ SI METRIC☒ US CUSTOMARY

WEIGHT

Mouser Electronics

Authorized Distributor

Click to View Pricing, Inventory, Delivery & Lifecycle Information:

[Honeywell:](#)

[1PB587](#)