

MICRO SWITCH

A DIVISION OF MINNEAPOLIS-HONEYWELL REGULATOR COMPANY  
PRAIRIE, ILLINOIS

FED. MFR. CODE 91929

SWITCH-ENCLOSED

CATALOG LISTING

EX-AR68

THIS DRAWING COVERS A PROPRIETARY ITEM AND IS THE PROPERTY OF MICRO SWITCH, A DIVISION OF HONEYWELL. THIS DRAWING IS NOT TO BE COPIED OR USED WITHOUT THE APPROVAL OF MICRO SWITCH.

M

EX-AR68

M

DRAWING  
NUMBER

14

X

X

X

X

X

X

X

X

X

X

X

X

X

X

X

X

X

X

X

X

X

X

X

X

X

X

X

X

X

X

X

X

X

REPLACES

S.R. 5026

27AUG10

CMH

CHECK

27 JUN 61

22 FEB 64

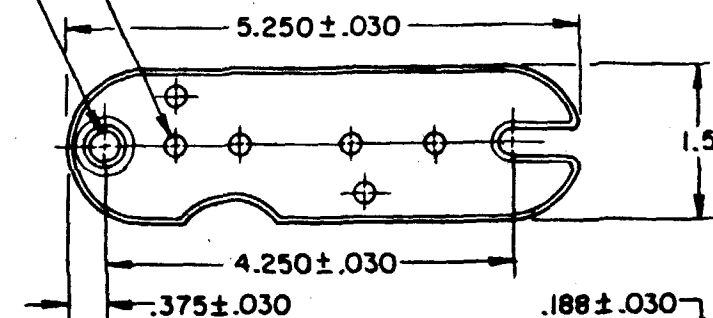
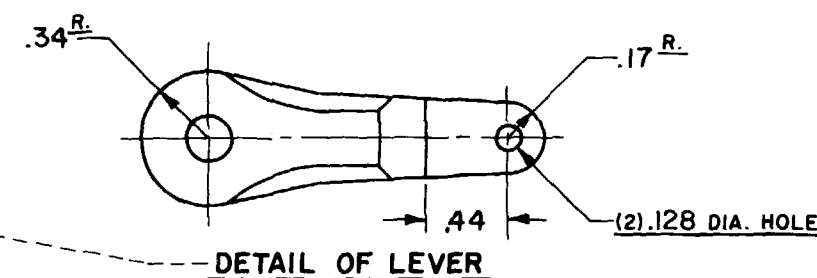
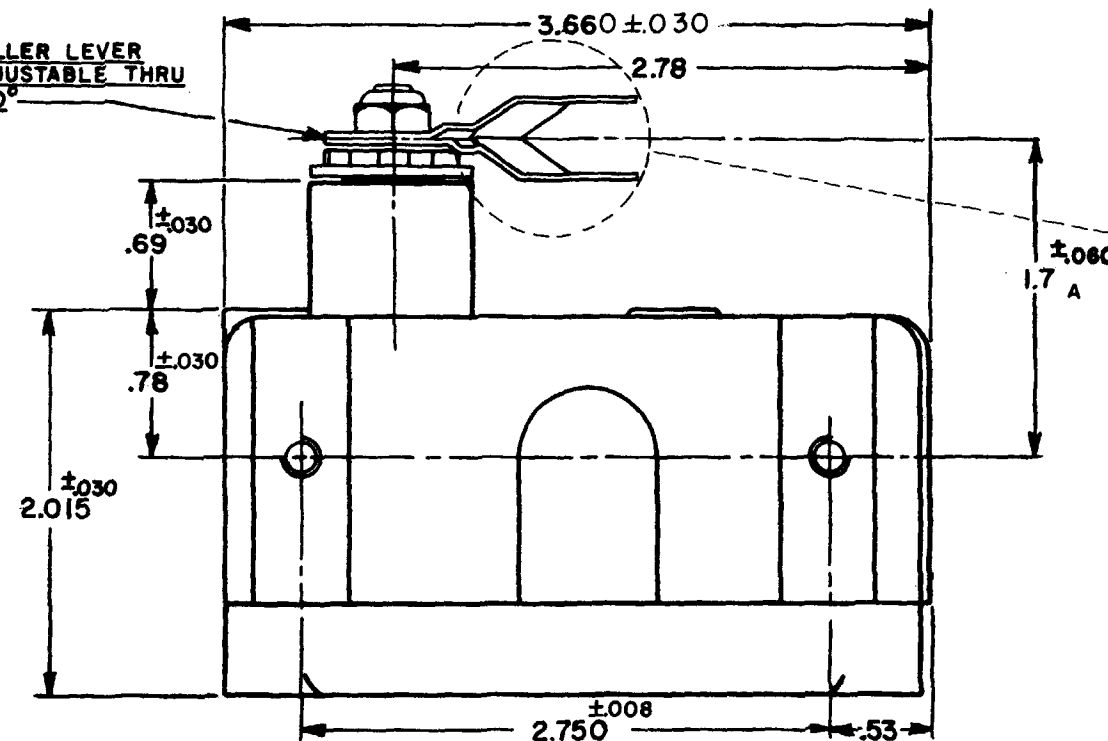
27 JUN 64

27 JUN 64

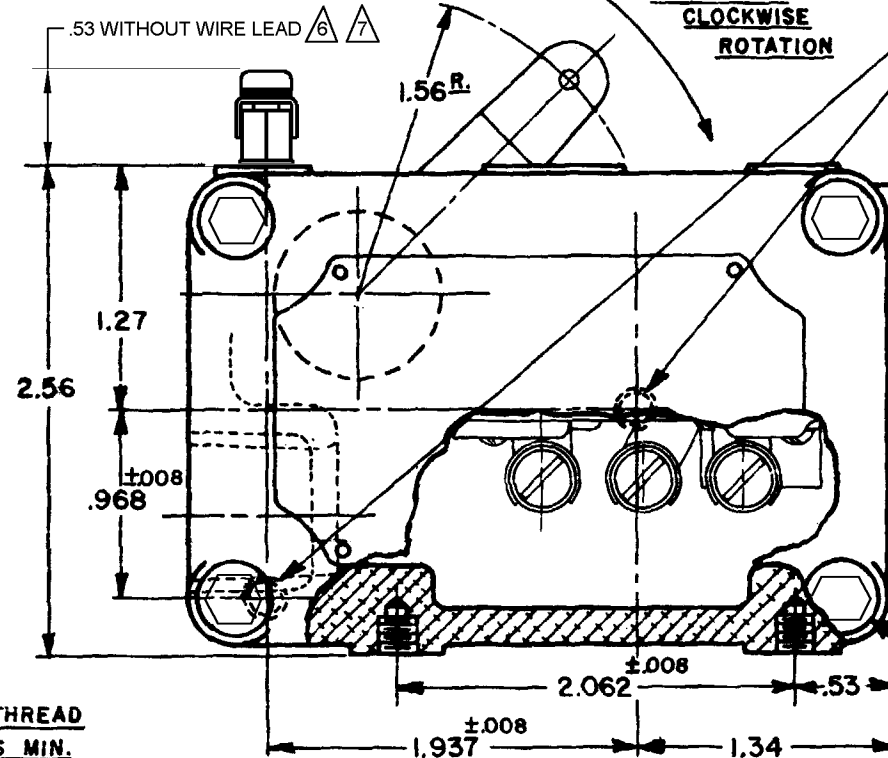
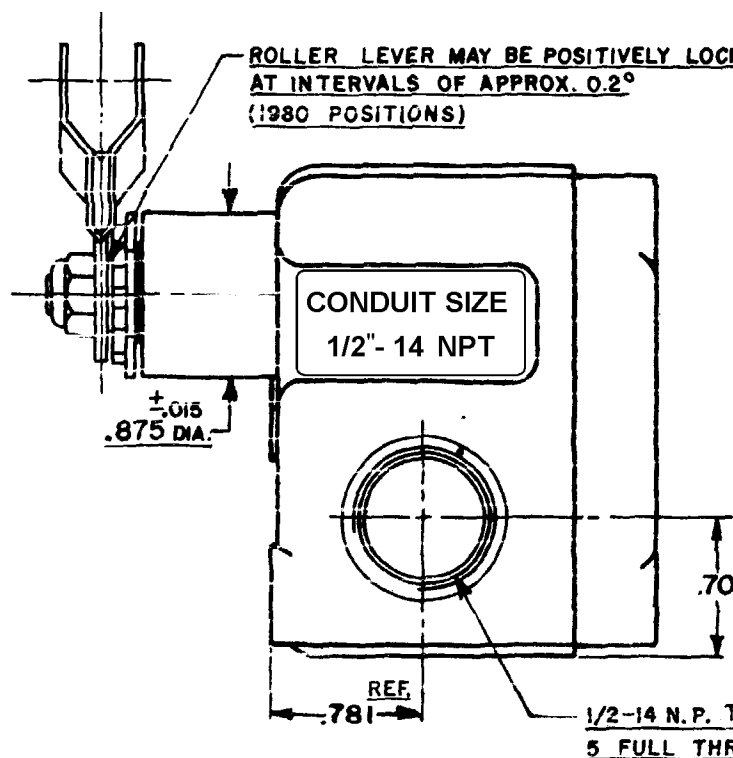
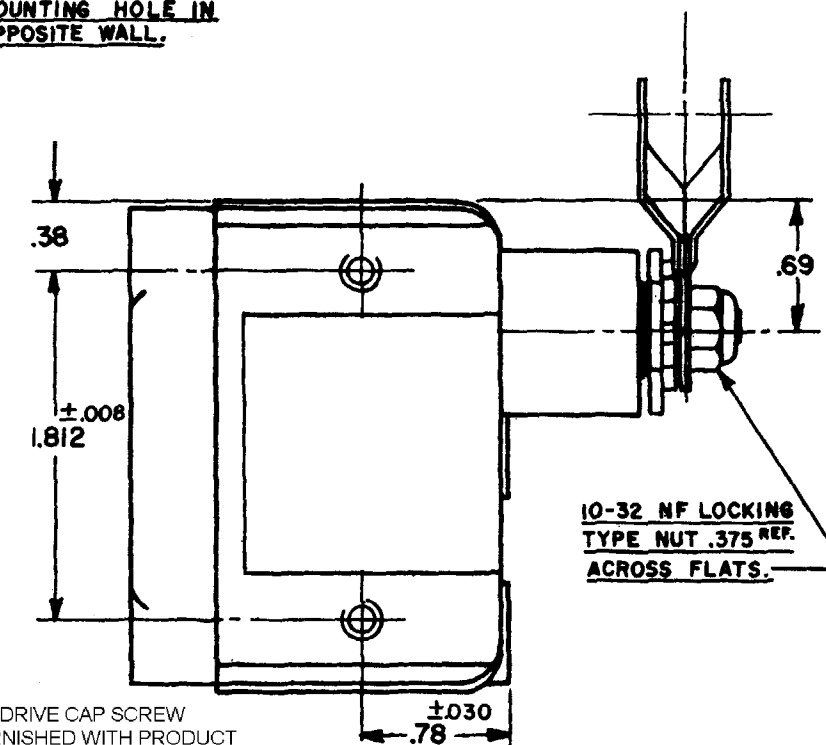
27 JUN 64

27 JUN 64

27 JUN 64

MTG HOLE AND SLOT FOR .250 DIA SCREW  
HOLE FOR NO. 10 PAN HEAD SCREW (6)MOUNTING BRACKET (1) AND 10-32 UNF X .250 REF  
PAN HEAD SCREW (2) FURNISHED UNASSEMBLED  
SCALE - HALF SIZEROLLER LEVER  
ADJUSTABLE THRU  
360°

DETAIL OF LEVER

ROLLER LEVER MAY BE POSITIVELY LOCKED  
AT INTERVALS OF APPROX. 0.2°  
(1980 POSITIONS)RIGHT HAND  
CLOCKWISE  
ROTATION(2) MOUNTING HOLE IN  
OPPOSITE WALL.4 X 5 mm HEX DRIVE CAP SCREW  
WRENCH FURNISHED WITH PRODUCT

## CHARACTERISTICS

OPERATING FORCE-----8-20 OZ.  
RELEASE FORCE-----4 OZ. MIN.  
PRETRAVEL-----.219 MAX. (8°)  
DIFFERENTIAL TRAVEL---.007 MAX. (14°)  
OVERTRAVEL---DO NOT OVERTRAVEL  
MORE THAN 90°.  
SWITCH-BASIC REPLACEMENT-----BZ-2R-P4

## ELECTRICAL DATA

CONTACT ARRANGEMENT  
S.P.D.T.  
BREAK DISTANCE  
.020 MIN.  
-L96- 15 A-125, 250, OR 480 VAC  
1/2 A-125 VDC; 1/4 A-250 VDC  
1/8 HP-125 VAC; 1/4 HP-250 VAC

## SCALE-----FULL

DO NOT SCALE PRINT

UNLESS OTHERWISE  
SPECIFIED  
DIMENSIONS ARE IN INCHES  
TOLERANCES ARE:ONE PLACE (.0) ±.030  
TWO PLACE (.00) ±.015  
THREE PLACE (.000) ±.008  
ANGLES ±

WEIGHT

## NOTE-

- (8) MOUNTING SCREW HOLES, 10-32 NF-2B THREADS X .219 REF. DEEP.
- 8-32 NC X .219 REF. TERMINAL SCREWS AND CUP WASHERS.
- EXPLOSION PROOF-UNDERWRITERS LAB. INC. LISTED FOR HAZARDOUS LOCATIONS NEMA 7, CLASS I GROUPS C AND D, NEMA 9, CLASS II GROUPS E, F AND G.
- EUROPEAN HAZARDOUS LOCATIONS DESIGNATION: Ex d IIB + H2 T6 CATAGORY II 2 G
- SEAL RATING: NEMA 1

EXTERNAL GROUND SCREW MAY BE ASSEMBLED TO ANY UNUSED MOUNTING SCREW HOLE

ASSEMBLY PROVIDED SPLIT LOCKWASHER BETWEEN GROUND LUG AND HOUSING

MASTER

74-243

DRAWN

D.A.W. 26 JAN '56

CHECK

707158

TSM

OCT 91

OCT 91

# Mouser Electronics

Authorized Distributor

Click to View Pricing, Inventory, Delivery & Lifecycle Information:

[Honeywell:](#)

[EX-AR68](#)